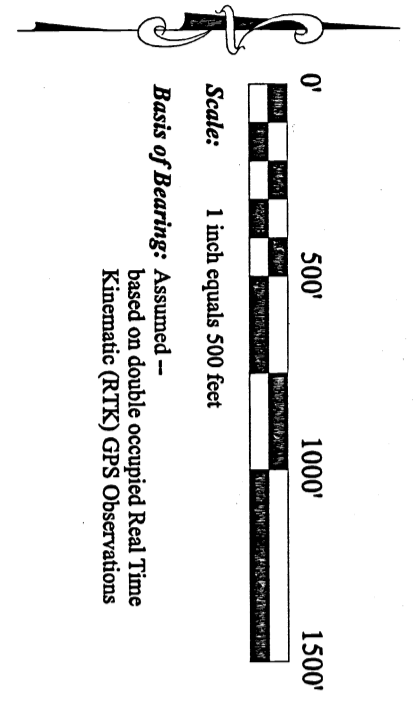


A Survey of the North Line of Section 3, Township 6 North, Range 5 East, W.M., Skamania County, Washington



LEGEND

- Found and Accepted Monument "As Described - Visited this Survey"
- Set Position "2 in. Aluminum Cap w/ 1/2" Rebar" "Walczky Land Surveying, Inc. LS 22970"
- Line Marked "Blazed, Painted, and Flagged"
- Survey Reference (R #)
- General Land Office (GLO)
- Plum Creek Timber Co. (PCT)
- Long Bell Lumber Co. (L.B. LBR)

- Equipment / Procedures**
- Topcon HiPer G2 - Dual occupation RTK w/ weighted average
 - Topcon GPT-3202NW - Closed Traverse and Field Ties
 - Topcon FC-25A - Data Collection
 - Least Squares Adjustment

Survey Standards

This Survey meets or exceeds the Minimum Survey Accuracy Standards as set forth in WAC 535-130-090.

- Survey References**
- 1 GLO BLM online index Vol WA-R0128 Pg 0071.0-0073.0 Shelton (1900)
 - 2 GLO BLM online index Vol WA-R0171 Pg 0071.0 Rhodes Reurvey (1909)
 - 3 GLO BLM online index Vol WA-R0171 Pg 0113.0 Rhodes Subdivision (1909)
 - 4 Washington Veneer Corporation Right of Way Plat 1 W, Peterson, Logging Engineer (Aug. 5, 1930)
 - 5 Pacific Power and Light Company Retirement and Subdivision N.W. Pettifohn, Pettifohn Engineering Co. for Swift Hydroelectric Project (October 1957)
 - 6 United States Forest Service Land Corner Records (A 17) B. Heckel, Forester (June, 1965)
 - 7 International Paper Company, Long Bell Division, Right of Way Plat, C.M. Pumphrey (January 1967)
 - 8 Washington State Department of Natural Resources Survey Control Layout Map (September, 1968)
 - 9 Washington State Department of Natural Resources Survey, James W. Froehman, Registered Oregon Engineer 4185 (December 1968)
 - 10 Washington State Department of Natural Resources Setting of Concrete Monument Records, Whittan (October, 1969)
 - 11 International Paper Company Land Corner Records (1970) Given to DNR in 2002 by Hampton Tree Farm, Inc.

A15

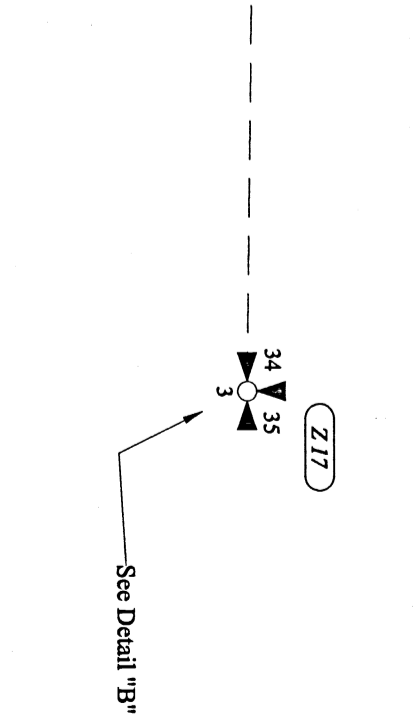
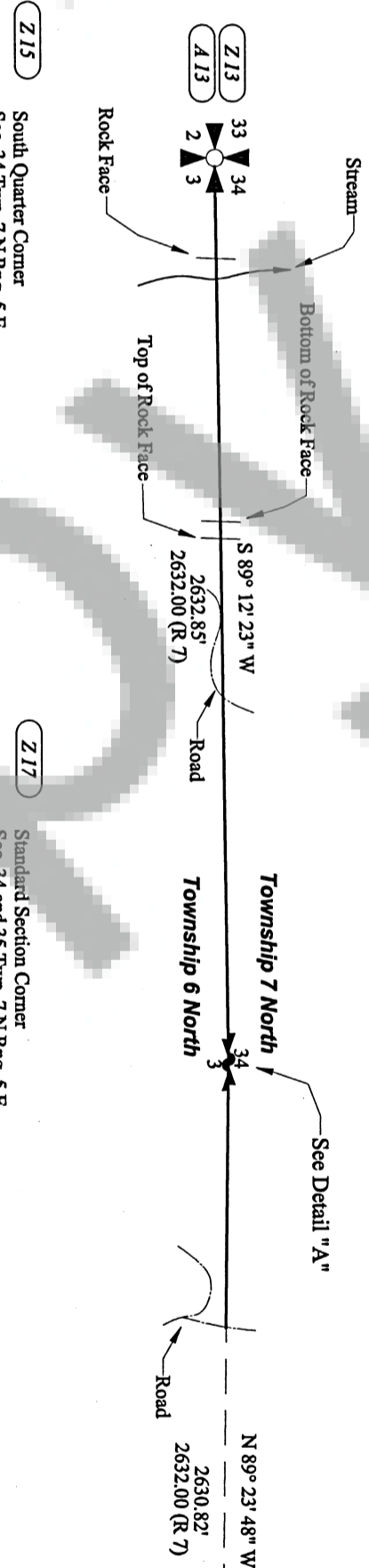
North Quarter Corner
Sec. 3 Twp. 6 N Rng. 5 E
1900 - GLO Survey of Township Line by Shelton
Set 4 1/2 ft. 4 in. square Fir Post 24 in. in the ground.
Bearing Trees
10" Fir S11 1/2° 30' links
10" Fir N17 1/2° 30' links
1909 - GLO Survey Subdivision of Twp. 6 N Rng. 5 E
By Rhodes
Set Closing Corner for Section 2 and 3 Twp. 6 N Rng. 5 E making the Quarter Corner Set by Shelton in 1900 obsolete for Section 3 Twp. 6 N Rng. 5 E
2011 - Walczky Land Surveying, Inc
Set 2 in. Aluminum Monument w/ 1/2" Rebar based on Proportioned position
Added Reference Points:
9" W. Henlock N71°W 4.5'
7" W. Henlock S44°E 6.52'
Aluminum tag and 6" spike in right collar
**Bearing from corner to tag

A13

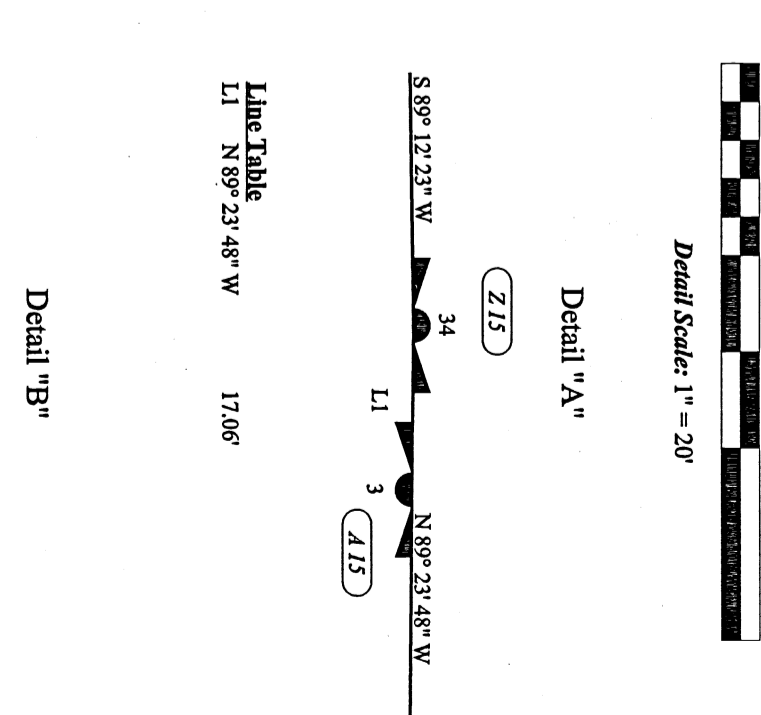
Common Section Corner
Sec. 3, Sec. 4 Twp. 6 N Rng. 5 E
Sec. 33, Sec. 34 Twp. 7 N Rng. 5 E
1900 - GLO Survey of Township Line by Shelton
Set 4 1/2 ft. 4 in. square Henlock Post 24 in. in the ground.
Bearing Trees
10" Henlock N74°E 29 links
20" Henlock S28°E 45 links
20" Cedar S8°W 54 links
20" Cedar N55°W 26 links
1909 - GLO Survey Subdivision of Twp. 6 N Rng. 5 E
Set 13x9x8 porous stone 9 in. in ground 53 links East of Corner Set by Shelton in 1900 for Closing Corner to Section 2 and 3 of Twp. 6 N Rng. 5 E
1950 - Washington Veneer Corporation
1 W. Peterson, Logging Engineer
Found Corner, but no Note of what was found
Blazed North and East out of Corner
1957 - Pacific Power and Light Company
N.W. Pettifohn, Pettifohn Engineering Co.
Found 4 B.T.s no record of what type of monument was found
1967 - International Paper Company, Long Bell Division
C.M. Pumphrey
Found Iron Rod and 2 B.T.s
Sept. 1968 - Washington State Department of Natural Resources
Set DNR Concrete Monument w/ Brass Cap
Dec. 1968 - Washington State Department of Natural Resources
Found DNR Concrete Monument w/ Brass Cap
Found B.T.s
2011 - Walczky Land Surveying, Inc.
Found 4x4 Concrete DNR Monument
Found 2 B.T.s
36" Cedar Stump N 55°W 26 links (GLO)
32" Cedar with scribed face and Cousins mark.
N14°E 35.6 ft (L.B. LBR)
N12°E 34.2 ft (L.B. LBR)
S8°W 54 links (GLO) (Cor. to B.T.)
Found Reference Points:
28" Henlock with face no visible scribing
S83°E 12.4 ft railroad spike in right collar (PCT)
S72°E 11.5 ft (L.B. LBR marked M. Baker)
4" Henlock S12°W 21.9 ft (PCT)
11" Fir with beveled face
N56°W 53.4 ft railroad spike in right collar (PCT)
T-post West 5.0 ft (PCT)
**Bearings from tag to corner unless GLO

A17

Closing Corner
Sec. 2 and 3 Twp. 6 N Rng. 5 E
1900 - GLO Survey of Township Line by Shelton
Set 4 1/2 ft. 4 in. square Henlock Post 24 in. in the ground
Common Section Corner for Sections 34 and 35
Twp. 7 N Rng. 5 E and Sections 2 and 3 Twp. 6 N Rng. 5 E
Bearing Trees
10" Fir S45 1/4° 35 links
12" Fir S45 1/4° 35 links
10" Henlock S11°W 12 links
8" Henlock N21 1/4° W 9.5 links
1909 - GLO Survey Subdivision of Twp. 6 N Rng. 5 E by Rhodes
Set 13x9x8 porous stone 9 in. in ground 53 links East of Corner Set by Shelton in 1900 for Closing Corner to Section 2 and 3 of Twp. 6 N Rng. 5 E
Changed Station's position to be corner for Section 34 and 35 Twp. 6 N Rng. 5 E
Destroyed B.T.s for Section 2 and 3
Twp. 6 N Rng. 5 E
Bearing Trees:
11" Henlock S36°E 17 links
11" Henlock S7°W 10 links
11" Henlock S7°W 10 links
1969 - Washington State Department of Natural Resources
G.E. Whittan
Found Bolt B.T.s and Stone
Set Standard Concrete DNR monument with Brass cap in place of stone, set stone on south side.
Set Reference Points:
BT 12" Henlock S28°E 11.7 ft
BT 20" Henlock S5°W 6.1 ft
RP 22" Henlock N9°W 19.0 ft
2011 - Walczky Land Surveying, Inc
Found 4x4 DNR Concrete monument with Brass cap
Found Bearing Tree tags:
20" W. Henlock Stump (detached) N8°E 6.0 ft
Metal T post w/ BT tag West 3.0 ft
**Bearing from tag to corner unless GLO



- A17**
- South Quarter Corner
Sec. 34 Twp. 7 N Rng. 5 E
1900 - GLO Survey of Township Line by Shelton
Set 4 1/2 ft. 4 in. square Fir Post 24 in. in the ground.
Bearing Trees
10" Fir N17 1/2° 30 links
6" Fir S11 1/2° 9 links
1957 - Pettifohn Engineering Co.
N.W. Pettifohn
Proportioned 1/4 Corner position on right of way map as original was obliterated.
1967 - International Paper Co., Long Bell Division
C.M. Pumphrey
Proportioned 1/4 Corner position on right of way map as original was obliterated.
2011 - Walczky Land Surveying, Inc
Set 2 in. Aluminum Monument w/ 1/2" Rebar
Reset Position based on found evidence
Found International Paper Co. Reference Ties and decayed high pole on ground
Found Reference Ties:
13" D. Fir S15°E 3.4'
5" D. Fir N17°W 8.6'
Decayed and fallen on ground able to reestablish position
Added Reference Points:
Aluminum tag and 6" spike in right collar
13" D. Fir N8°W 6.0'
12" W. Henlock S47°E 6.1'
**Bearing is corner to tag unless GLO
- A17**
- Standard Section Corner
Sec. 34 and 35 Twp. 7 N Rng. 5 E
1900 - GLO Survey of Township Line by Shelton
Set 4 1/2 ft. 4 in. square Henlock Post 24 in. in the ground
Common Section Corner for Sections 34 and 35 Twp. 7 N Rng. 5 E and Sections 2 and 3 Twp. 6 N Rng. 5 E
Bearing Trees
10" Fir N57 1/4° 35 links
12" Fir S45 1/4° 35 links
10" Henlock S11°W 12 links
8" Henlock N21 1/4° W 9.5 links
1909 - GLO Survey Subdivision of Twp. 6 N Rng. 5 E by Rhodes
Found Henlock Post 4 in square 2 ft above ground and witness markings as per Surveyor General.
Set Stone 27 links East of Corner for the Closing Corner for Section 2 and 3 of Twp. 6 N Rng. 5 E
Changed position to be corner for Section 34 and 35 Twp. 6 N Rng. 5 E.
Destroyed B.T.s for Section 2 and 3 Twp. 6 N Rng. 5 E.
N.W. Pettifohn
Pettifohn Engineering Co.
- A17**
- United States Forest Service
Set Iron Rod
Found 1/2" Rebar Rod 4" above Ground with 2"x2" Wood Post 24" high in good condition.
Found tie 8" Henlock B.T. with visible original Scribing and other
Possible B.T.s
1967 - International Paper Co., Long Bell Division
C.M. Pumphrey
Found Iron Rod
Found 4 B.T.s
- A17**
- Washington State Department of Natural Resources
G.E. Whittan
Found 4 B.T.s and the 2 Destroyed B.T.s
Set Standard Concrete DNR monument with Brass cap by acting distance pulled from B.T.s. Distance from the N/E did not fit.
Set Reference Points:
BT 14" Fir N57°E 21.5 ft
BT 18" Henlock N21°W 6.3 ft
BT 20" Fir S15°E 5.0 ft
2011 - Walczky Land Surveying, Inc
Found 4x4 DNR Concrete monument with Brass cap
Found Bearing Tree tags:
16" D. Fir Stump Tie on Stump N5°W 9.0 ft
15" W. Henlock Stump w/ RR Spike S28°E 6.1 ft
14" D. Fir Stump w/ RR Spike S58°W 22.0 ft
Metal T post w/ BT tag East 3.0 ft
**Bearing from tag to corner unless GLO



Indexing Information

Qtr	Section	Township	Range
NW 1/4	3	6 N	5 E, W.M.
NE 1/4	34	6 N	5 E, W.M.
SW 1/4	34	6 N	5 E, W.M.
SE 1/4	34	7 N	5 E, W.M.

AUDITORS CERTIFICATE

FILED FOR RECORD THIS 12th DAY OF December, 2011 AT 12:11 P.M. AND RECORDED IN VOLUME OF SURVEYS ON PAGE 1 AT THE REQUEST OF WALCZYK LAND SURVEYING INCORPORATED. AUDITOR'S FILE NUMBER 201179645

Melvin Anderson
Skiway COUNTY AUDITOR

SURVEYOR'S CERTIFICATE

THIS MAP CORRECTLY REPRESENTS A SURVEY MADE BY ME OR UNDER MY DIRECTION IN CONFORMANCE WITH THE REQUIREMENTS OF THE SURVEY RECORING ACT AT THE REQUEST OF Olympic Resource Management, Inc. IN September, 2011.

Walczky DATE 12/8/2011
PROFESSIONAL LAND SURVEYOR NUMBER 22970

WALCZYK
Land Surveying, Inc.
18221 Melon Ct SW
Rochester, Washington 98579
Tel: (360) 273-7807
www.walczkys.com

DRAWN BY	AWW	DATE	10/07/2011
REVIEWED BY	DPW		
SCALE	1" = 500'	SHEET	1 of 1