

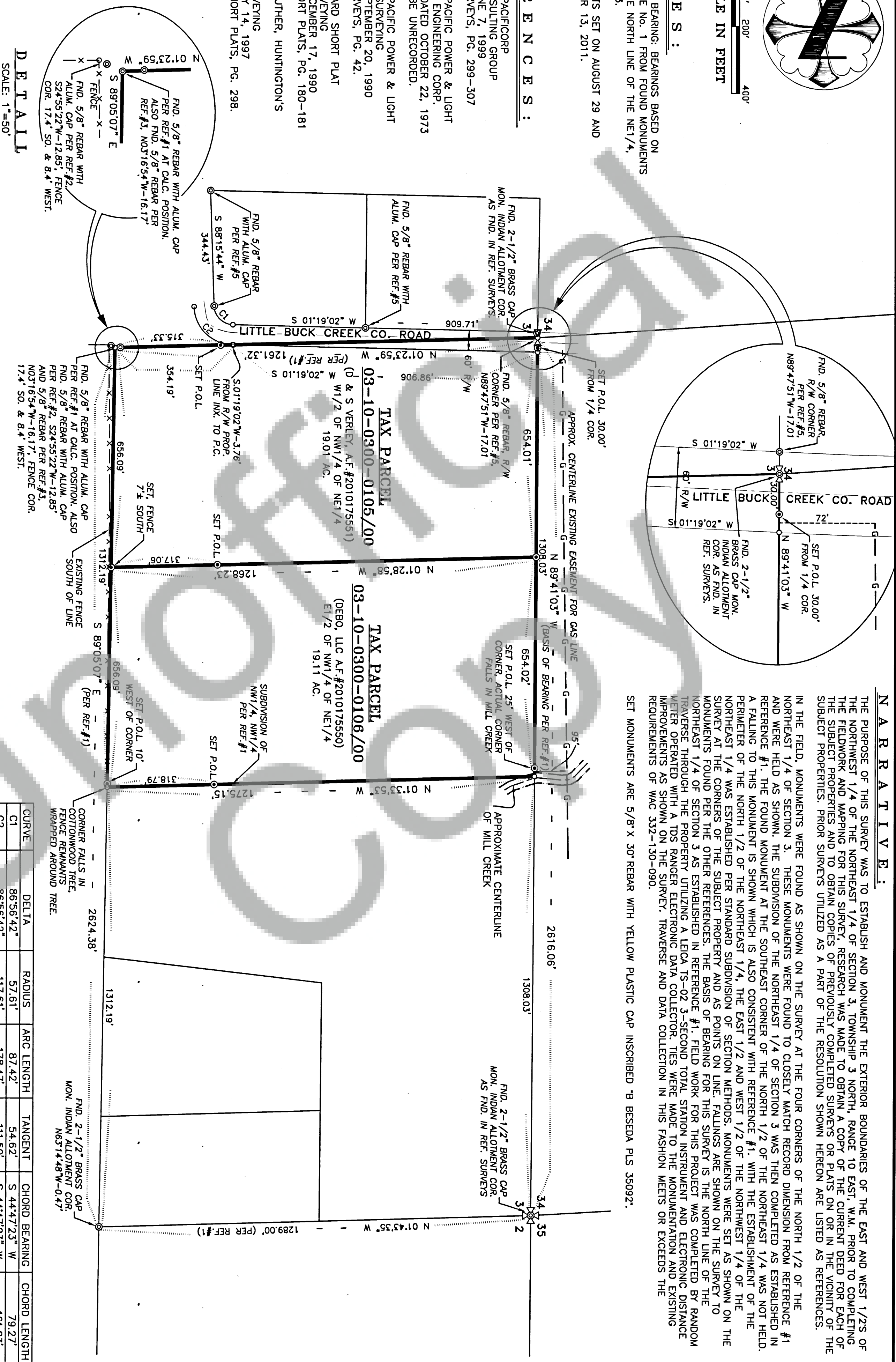
0' 100' 200' 400'
SCALE IN FEET

NOTES:

- 1) BASIS OF BEARING: BEARINGS BASED ON REFERENCE NO. 1 FROM FOUND MONUMENTS ALONG THE NORTH LINE OF THE NE1/4, SECTION 3.
- 2) MONUMENTS SET ON AUGUST 29 AND SEPTEMBER 13, 2011.

REFERENCES:

- 1) SURVEY FOR PACIFICORP BY DAVIS CONSULTING GROUP RECORDED JUNE 7, 1999 BK. 3 OF SURVEYS, PG. 299-307
- 2) SURVEY FOR PACIFIC POWER & LIGHT W.O. #4463, DATED OCTOBER 22, 1973 BELIEVED TO BE UNRECORDED.
- 3) SURVEY FOR PACIFIC POWER & LIGHT BY TRANTON SURVEYING RECORDED SEPTEMBER 20, 1990 BK. 3 OF SURVEYS, PG. 42.
- 4) CHARLES SEWARD SHORT PLAT BY DZAB SURVEYING RECORDED DECEMBER 17, 1990 BK. 3 OF SHORT PLATS, PG. 180-181
- 5) FITZGERALD, LUTHER, HUNTINGTON'S SHORT PLAT BY DZAB SURVEYING RECORDED MAY 14, 1997 BK. OF OF SHORT PLATS, PG. 298.



DETAIL
SCALE: 1"=50'

LEGEND:

- SET 5/8" X 30" REBAR WITH YELLOW PLASTIC CAP, "B" BESEDA PLS 35092
- FOUND MONUMENTS, AS NOTED.
- CALCULATED CORNERS, NOT SET.
- SET HUB & TACK.
- SET P.K. NAIL OR AS NOTED.
- ◆ SET BRASS SCREW AND WASHER, "PLS #35092"
- X— EXISTING FENCE LINE.

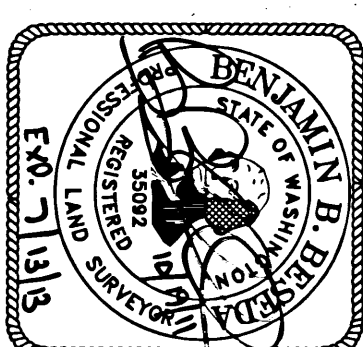
AUDITOR'S CERTIFICATE:

FILED FOR RECORD THIS 20th DAY OF October, 2011,
AT 10:32 A.M. IN BOOK AFN 2011179276 AT PAGE 1 AT THE
REQUEST OF BENJAMIN B. BESEDA,
REGISTERED LAND SURVEYOR #35092.

Malina Hudson
COUNTY AUDITOR Deputy

SURVEYOR'S CERTIFICATE:

THIS MAP CORRECTLY REPRESENTS A SURVEY MADE
BY ME OR UNDER MY DIRECTION IN CONFORMANCE
WITH THE REQUIREMENTS OF THE SURVEY
RECORDING ACT AT THE REQUEST OF DES AND
SHERYL VERLEY IN SEPTEMBER 2011.



BENJAMIN B. BESEDA,
REGISTERED LAND SURVEYOR, #35092

CURVE	DELTA	RADIUS	ARC LENGTH	TANGENT	CHORD BEARING	CHORD LENGTH
C1	86°56'42"	57.61'	87.42'	54.62'	S 44°47'23" W	79.27'
C2	86°56'42"	117.61'	178.47'	111.50'	S 44°47'23" W	161.83'

FND. 2-1/2" BRASS CAP
MON. INDIAN ALLOTMENT COR.
N63°14'46"W-0.47'

DES AND SHERYL VERLEY
TAX PARCELS 03-10-0300-0105/00
AND 03-10-0300-0106/00

IN THE NE1/4 OF THE NE1/4 SECTION 3, TWP. 3 N., R. 10 E. W.M.
SKAMANIA COUNTY, WASHINGTON

TENNESON ENGINEERING CORP.

CONSULTING ENGINEERS
3313 W. 2ND STREET, Suite 100
THE DALLES, OREGON 97058
PH. 541-296-9177 FAX 541-296-6657

Survey	Calculation	Design	Date	Scale
B.R.H.	B.B.B.		10/19/2011	1"=200'
Drawn	DWG. No.	Work Order No.	Sheet	
S.D.H.	K:\ACAD\13700\13781\sy.dwg	13781	1 of 1	