

SURVEY

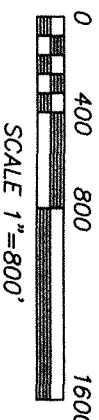
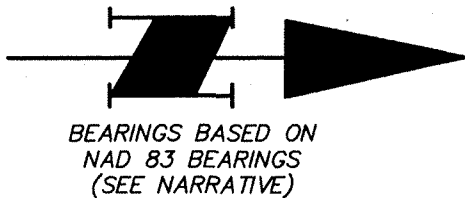
in SECTIONS 25 and 26
T3N, R8E, W.M.
SKAMANIA COUNTY, WA.

NARRATIVE

THE PURPOSE OF THIS SURVEY WAS TO MONUMENT AND MARK THE BOUNDARIES OF THE "WHITE TRACT" CITED. CONTROLLING CORNERS SHOWN WERE TIED WITH EITHER "RTK GPS PROCEDURES" OR CONVENTIONAL TRAVERSE METHODS ORIGINATING FROM NEARBY "RTK GPS POINTS". THE RESULTING COORDINATES WERE THEN TRANSLATED TO THE WSDOT SURVEY MARK "GS30014-8" MONUMENT ID #1231. THE GPS POINTS WERE COLLECTED ON "WASHINGTON STATE PLANE COORDINATE SYSTEM, SOUTH ZONE" (NAD 83) WHICH WAS OUR BASIS OF BEARING. NEW MONUMENTS ESTABLISHED WERE SET FROM A RANDOM CONTROL TRAVERSE RUN BETWEEN GPS POINTS SET NEAR THE "WHITE PROPERTY". THESE TRAVERSES MET THE REQUIREMENTS OF WAC 332-130-090. FIELD EQUIPMENT USED CONSISTED OF A 3-SECOND "TOTAL STATION INSTRUMENT" WITH ELECTRONIC DATA COLLECTOR. A "TRIMBLE 5700 GPS UNIT" WAS USED FOR GPS OBSERVATIONS.

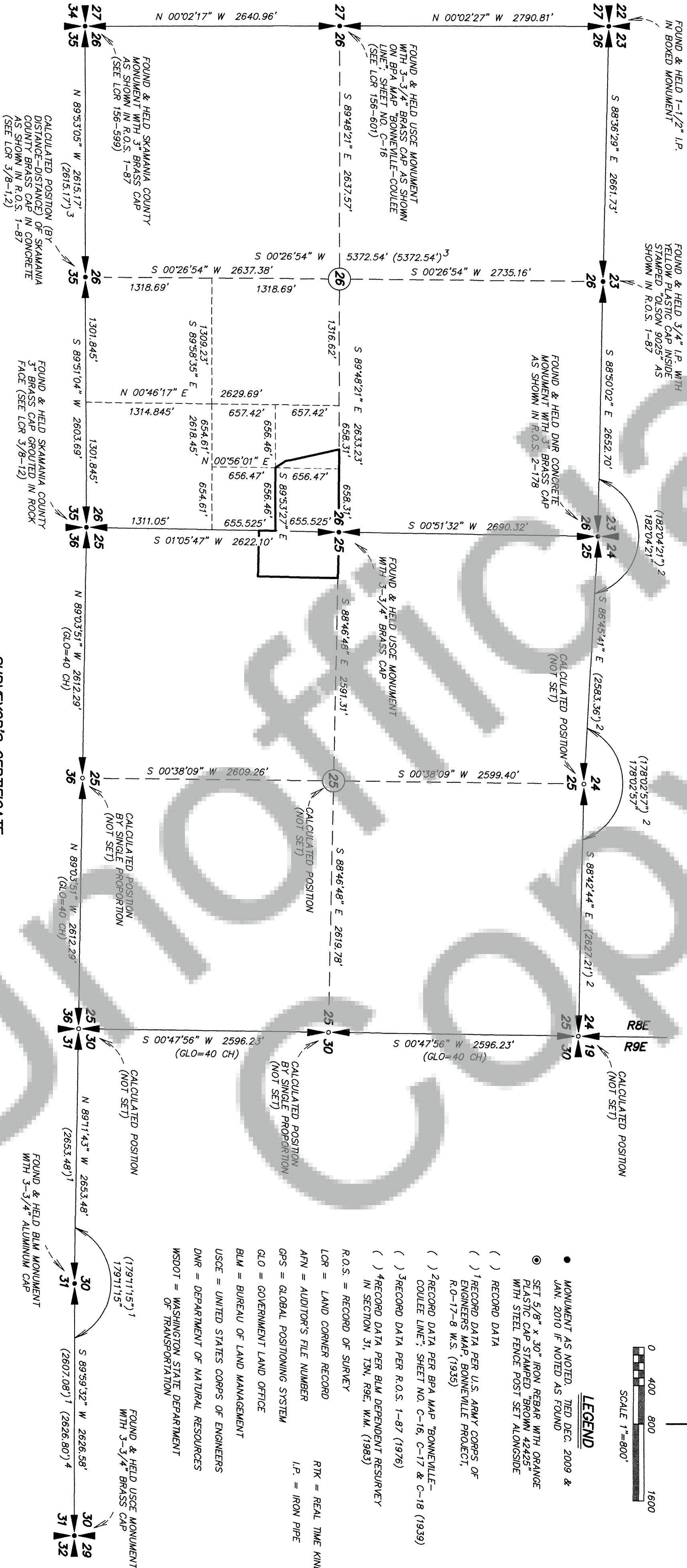
DEED REFERENCE

STATUTORY WARRANTY DEED
TO
WHITE
AFN 2004452881
(05/07/2004)



LEGEND

- MONUMENT AS NOTED, TIED DEC. 2009 & JAN. 2010 IF NOTED AS FOUND
- ⊙ SET 5/8" x 30" IRON REBAR WITH ORANGE PLASTIC CAP STAMPED "BROWN 42425" WITH STEEL FENCE POST SET ALONGSIDE
- () RECORD DATA
- () 1 RECORD DATA PER U.S. ARMY CORPS OF ENGINEERS MAP, BONNEVILLE PROJECT, R.O-17-8 W.S. (1935)
- () 2 RECORD DATA PER BPA MAP "BONNEVILLE-COULEE LINE", SHEET NO. C-16, C-17 & C-18 (1939)
- () 3 RECORD DATA PER R.O.S. 1-87 (1976)
- () 4 RECORD DATA PER BLM DEPENDENT RESURVEY IN SECTION 31, T3N, R9E, W.M. (1983)
- R.O.S. = RECORD OF SURVEY
- BLM = BUREAU OF LAND MANAGEMENT
- USCE = UNITED STATES CORPS OF ENGINEERS
- DNR = DEPARTMENT OF NATURAL RESOURCES
- WSDOT = WASHINGTON STATE DEPARTMENT OF TRANSPORTATION
- LOR = LAND CORNER RECORD
- RTK = REAL TIME KINEMATIK
- AFN = AUDITOR'S FILE NUMBER
- I.P. = IRON PIPE
- GPS = GLOBAL POSITIONING SYSTEM
- GLO = GOVERNMENT LAND OFFICE
- BLM = BUREAU OF LAND MANAGEMENT
- USCE = UNITED STATES CORPS OF ENGINEERS
- DNR = DEPARTMENT OF NATURAL RESOURCES
- WSDOT = WASHINGTON STATE DEPARTMENT OF TRANSPORTATION



SURVEYOR'S CERTIFICATE

This map correctly represents a survey made by me or under my direction in conformance with the requirements of the Survey Recording Act at the request of JIMMY WHITE in FEBRUARY, 2010

PROFESSIONAL LAND SURVEYOR

CERTIFICATE NO. 42425

GREGORY BROWN



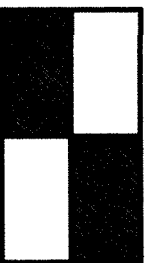
(Signed)

(Deputy County Auditor)

AUDITOR'S CERTIFICATE

Filed for record this 14th day of April, 2010
at 12:41 pm. under AFN# 2010175262.
request of Hagedorn, Inc. Melie Anderson at the
(Signed) Melie Anderson

NOTE: Hagedorn, Inc. makes no warranties as to matters of unwritten title such as acquiescence, estoppel, adverse possession, etc.



HAGEDORN, INC.
Surveying and Engineering

1924 Broadway Vancouver, Wa. 98663

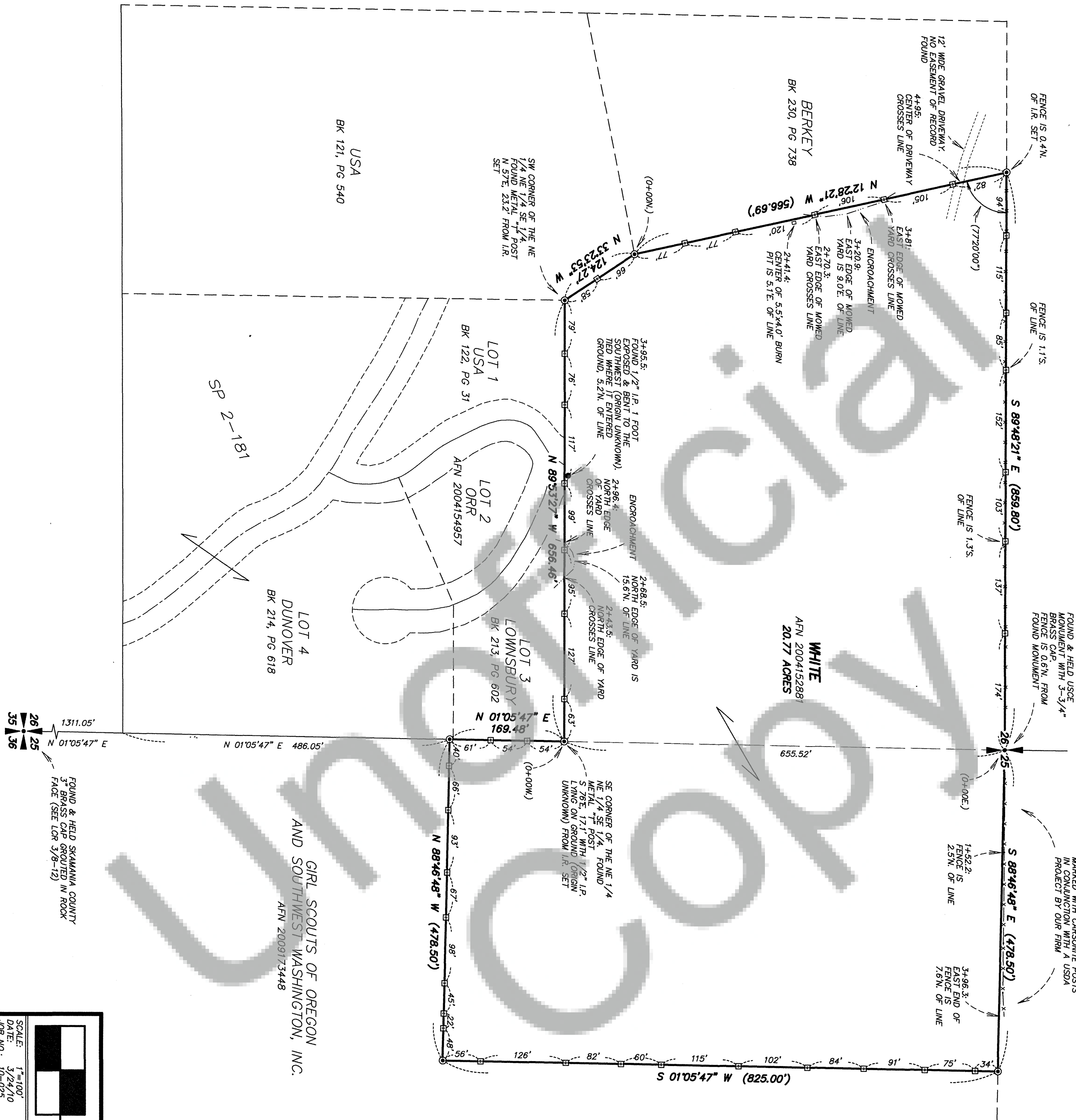
Ph: (360) 696-4428

SCALE: 1"=800'	CALC. BY: GAB	DWG# PAGE-1
DATE: 3/24/10	DRAWN BY: CC	PAGE 1 OF 2
JOB NO.: 10-025	CHECKED BY: BPT	

BEARINGS BASED ON
NAD 83 BEARINGS
(SEE NARRATIVE)



- MONUMENT AS NOTED. TIED DEC. 2009 & JAN. 2010 IF NOTED AS FOUND
- ◎ SET 5/8" x 30" IRON REBAR WITH ORANGE PLASTIC CAP STAMPED "BROWN 42425" WITH STEEL FENCE POST SET ALONGSIDE
- ▣ STEEL FENCE POST SET ON LINE, DISTANCE TO NEAREST FOOT
- LCR = LAND CORNER RECORD
- AFN = AUDITOR'S FILE NUMBER
- I.P. = IRON PIPE
- SP = SHORT PLAT
- USCE = UNITED STATES CORPS OF ENGINEERS
- () = RECORD DEED



4/8/2016

HAGEDORN, INC.
Surveying and Engineering
1924 Broadway Vancouver, Wa. 98663
Ph: (360) 696-4428