

MONUMENT DESCRIPTION

- ① FOUND 1/2" IR W/YPC STAMPED "SMART #16929" AS SET IN SHORT PLAT BK. 3, PG. 323, S83°47'01"E, 0.59' FROM CALCULATED POSITION.
- ② FOUND 1/2" IR W/YPC STAMPED "SMART #16929" AS SET IN SHORT PLAT BK. 3, PG. 323, N76°08'01"E, 0.98' FROM CALCULATED POSITION.
- ③ FOUND 1/2" IR W/YPC STAMPED "SMART #16929" AS SET IN SHORT PLAT BK. 3, PG. 323, N11°54'56"W, 0.21' FROM CALCULATED POSITION.
- ④ FOUND 1/2" IR W/YPC STAMPED "SMART #16929" AS SET IN SHORT PLAT BK. 3, PG. 323, N28°33'43"E, 0.31' FROM CALCULATED POSITION.
- ⑤ FOUND 1/2" IR W/YPC STAMPED "SMART #16929" AS SET IN SHORT PLAT BK. 3, PG. 323, N59°29'43"W, 0.51' FROM CALCULATED POSITION.

DEED REFERENCES

STATUTORY WARRANTY DEED
HARRIS FAMILY TRUST
TO
SIRRAH CORPORATION
DEED BK. 240, PG. 614
(RECORDED: 04/01/2003)

SUPERIOR COURT OF WASHINGTON
FOR SKAMANIA COUNTY
SHERIFF'S DEED
DEED BK. 84, PG. 655
(RECORDED: 6/21/85)

BARGAIN AND SALE DEED
SUZANNE M. GRESSSEL TO KEVIN D. GRESSSEL
DEED BK. 194, PG. 323
(RECORDED: 10/18/99)

SURVEY REFERENCES

R.O.S. BK. 3, PG. 127, BY HAGEDORN, INC.
RECORDED 9/25/93.

R.O.S. AF# 2005157031, BY MACKAY & SPOSITO, INC., RECORDED 4/21/05.

R.O.S. AF# 2005158430, BY MACKAY & SPOSITO, INC., RECORDED 8/22/05.

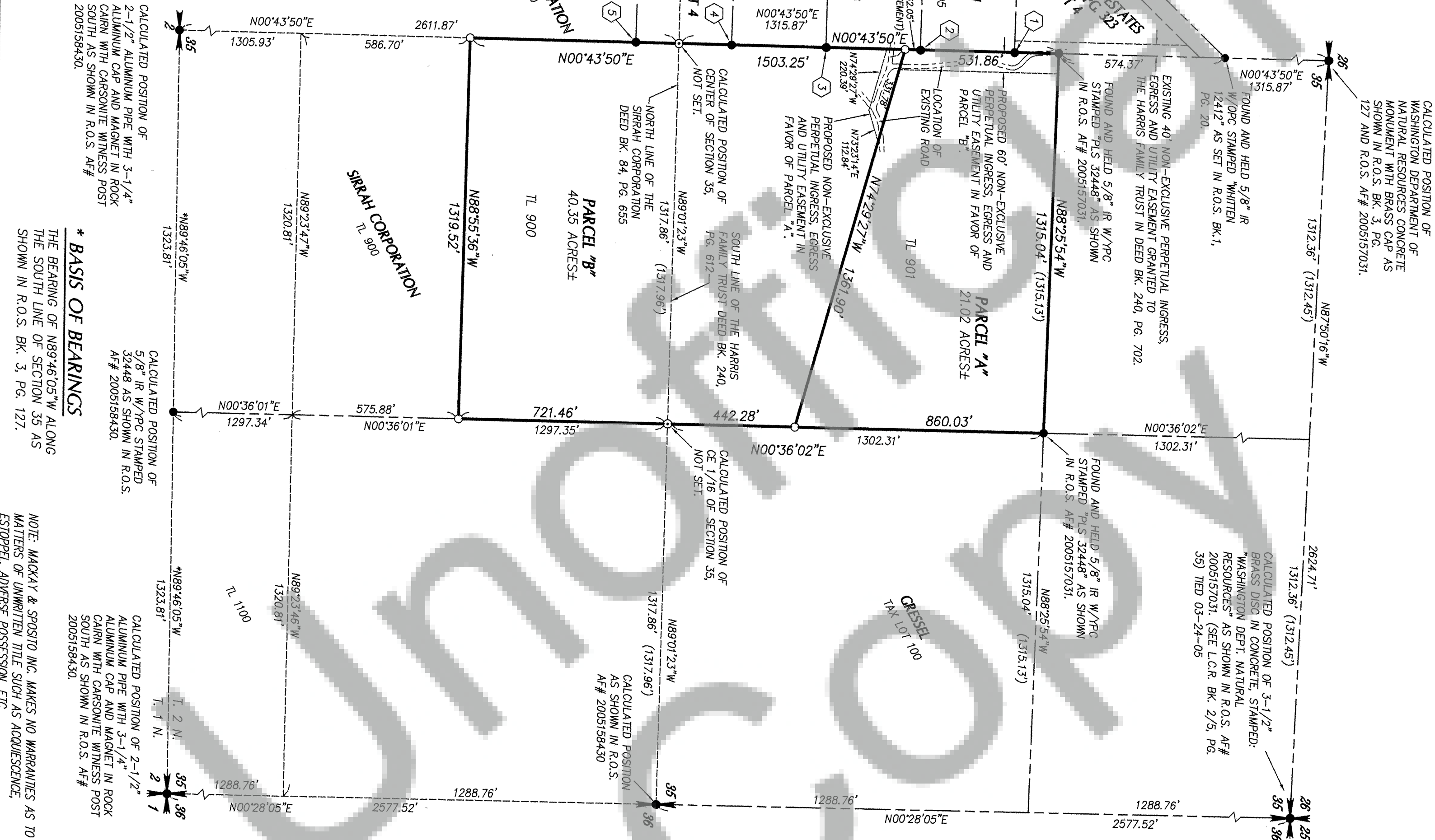
MILL LAKE ESTATES RECORDED IN SHORT PLAT BK. 3, PG. 323 BY SMART LAND SURVEYING, INC., 3/5/98.

CANYON CREEK ESTATES RECORDED IN SHORT PLAT BK. 3, PG. 297.

R.O.S. BK. 1, PG. 20, BY HAGEDORN, INC.
RECORDED 7/30/02.

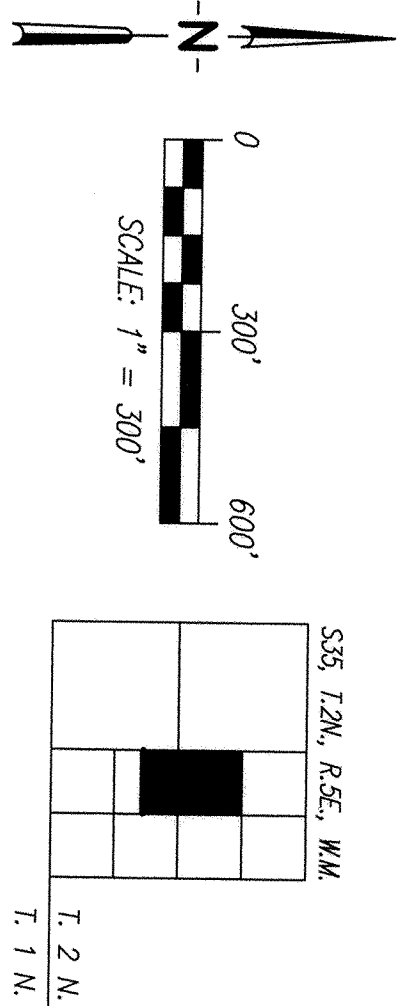
NARRATIVE

THE PURPOSE OF THIS RECORD OF SURVEY WAS TO MONUMENT THE TWO PARCELS CREATED FROM THE HARRIS FAMILY TRUST PARCEL AND THE SIRRAH CORPORATION PARCEL. FIELD WORK CONSISTED OF RECOVERING AND VERIFYING CONTROL POINTS SET BY THIS FIRM IN CONJUNCTION WITH RECORD OF SURVEY'S RECORDED UNDER AUDITOR'S FILE NO. S, 2005157031 AND 2005158430. NEW CONTROL POINTS WERE SET FROM RECOVERED POINTS AND A CLOSED TRAVERSE COMPLETED. FIELD WORK WAS PERFORMED USING A 3" TOTAL STATION INSTRUMENT WITH AN ELECTRONIC DATA COLLECTOR. THE TRAVERSE WAS ADJUSTED BY COMPASS RULE AND THE LINEAR ERROR OF CLOSURE WAS EQUAL TO OR EXCEEDED THE REQUIREMENTS OF WAC 332-130-090. CORNERS WERE SET BY RADIALLY FROM THE ADJUSTED CONTROL POINTS. PARCEL "A" AND PARCEL "B" WERE NOT LEGALLY CREATED LOTS AT THE TIME OF THIS SURVEY.



RECORD OF SURVEY

IN THE SW 1/4 OF THE NE 1/4
AND THE NW 1/4 OF THE SE 1/4 OF
SECTION 35, T.2N, R.5E, W.M.1,
SKAMANIA COUNTY, WASHINGTON
MAY, 2009



LEGEND

- SET 1/2" x 24" IRON ROD WITH YELLOW PLASTIC CAP STAMPED "PLS 36814", 5/8/09.
- FOUND MONUMENT AS NOTED, 5/4/09.
- ◎ CALCULATED POSITION
- R.O.S. RECORD OF SURVEY
- OPC ORANGE PLASTIC CAP
- YPC YELLOW PLASTIC CAP
- IR IRON ROD
- TL TAX LOT
- L.C.R. LAND CORNER RECORD
- () RECORD MEASUREMENT

SURVEYOR'S CERTIFICATE

THIS MAP CORRECTLY REPRESENTS A SURVEY MADE BY ME OR UNDER MY DIRECTION IN CONFORMANCE WITH THE REQUIREMENTS OF THE SURVEY RECORPING ACT. AT THE REQUEST OF EUGENE HARRIS, JR., IN MAY, 2009.



AUDITOR'S CERTIFICATE

FILED FOR RECORD THIS 25 DAY OF June, 2009,
AT 12:30 P.M. UNDER AUDITOR'S FILE NO. 2009173187 AT
THE REQUEST OF MACKAY & SPOSITO, INC.

DEPUTY COUNTY AUDITOR

Heidi B. Penner

Mackay & Sposito, Inc.

ENGINEERS SURVEYORS PLANNERS

1325 SE TECH CENTER DRIVE, SUITE 140 VANCOUVER, WA 98683

(360) 695-3411 (503) 289-6726 PTLD FAX (360) 695-0833

CALC. BY: MLF DRAWN BY: BTM JOB NO.: 15082
CHECKED BY: JMY DWG. NAME: 15082RST SHEET 1 OF 1