

**WHEN RECORDED RETURN TO:**

John G. Lawson  
113 S. Parkway Ave  
Battle Ground, WA 98604

**DOCUMENT TITLE(S)**

Land Corner Record

**REFERENCE NUMBER(S)** of Documents assigned or released:

☐ Additional numbers on page \_\_\_\_\_ of document.

**GRANTOR(S):**

Lawson Land Services, Inc

☐ Additional names on page \_\_\_\_\_ of document.

**GRANTEE(S):**

Public

☐ Additional names on page \_\_\_\_\_ of document.

**LEGAL DESCRIPTION** (Abbreviated: i.e. Lot, Block, Plat or Section, Township, Range, Quarter):

☐ Complete legal on page \_\_\_\_\_ of document.

**TAX PARCEL NUMBER(S):**

SG, TIN, R5E

☐ Additional parcel numbers on page \_\_\_\_\_ of document.

The Auditor/Recorder will rely on the information provided on this form. The staff will not read the document to verify the accuracy or completeness of the indexing information.



LAND DEVELOPMENT SERVICES

(206) 256-8008

JOHN G. LAWSON  
Registered Professional Land Surveyor  
Registered Professional Engineer

EastRidge Business Park  
Building 2, Suite 280  
11800 N.E. 95th Street  
Vancouver, WA 98682

# LAND CORNER RECORD

Township 1 North, Range 5 East W.M.; Skamania County; Corner Code No.: A-3

Name: North One Quarter of Section 6 Corner No.: \_\_\_\_\_

DLC, HES Mining Claim, Indian Allotment, Federal Reserve, Townsite

1. History of Corner Establishment and Subsequent Restoration; description of Evidence found:

Van Fleet and Newsome surveyed the North boundary of Township 1 North, Range 5 East in April 1859 under contract 47. At 40.00 chains they noted the following (set post for quarter section corner from which a maple 7" diameter bears South 45° East, 29 links distance and a willow 4" diameter bears North 7° East, 87 links distance. Also at 50.75 chains he calls a 36" diameter "line tree." See corner recovery by Hagedorn, incorporated for said "line tree."

We find no trace of original corner as it falls in a field that has apparently been cleared. There are old root wads, etc. pushed around the perimeter of it indicating that it was cleared with a bulldozer. This corner was recovered in 1909 by Clark Labarre, an old time surveyor, but subsequently it has been lost again. He notes on March 26, 1909 doing a survey for Tom Stafford in which he begins at the Northwest corner (Township Corner) of Section 6, and runs East 2,640. This is referenced in book 5, page 1.

Then on April 7, 1912 Clark Labarre starts at the South one-quarter corner of Section 6, and runs North 79.96 chains to the North one-quarter corner of 6. In book 5, page 71 he notes the following "I find a clump of maples that have grown up where the BT once stood, also a clump of willows where the BT stood, both answers distance and course."

THENCE, as there were no permanent markers to perpetuate the corner, we declare the corner lost and set it by single proportionate measurement from the Township corner to the West and the "line tree" to the East. The proportionate position as calculated from the line tree is within 1 foot of the measurement of the South quarter corner 6 to the proportionate North one-quarter corner as shown by Clark Labarre's survey notes.

2. Describe Monument, Accessories and Corollary Data to Perpetuate this Corner Location. Diagram corner and indicate meridian and reference to map of record.

LAWSON LAND SURVEYING job # \_\_\_\_\_ Date of Work: \_\_\_\_\_

We set a 1" iron pipe with brass cap 1' above ground. Set with West edge of meadow and referenced as follows:

1) N 44° W, 32.39' to a 14" alder, N 31° E, 145.04' to a 16" d. fir, S 21° W, 83.72' to a 14" alder.

Washington Plane Coordinates: \_\_\_\_\_ Zone, Y \_\_\_\_\_, X \_\_\_\_\_ Order of Accuracy.

Derived from: \_\_\_\_\_

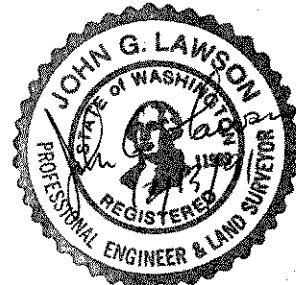
Pin pointed on photo # \_\_\_\_\_ Date: \_\_\_\_\_ Located at: \_\_\_\_\_

## SURVEYOR'S CERTIFICATE

This corner record correctly represents work performed by me or under my direction in compliance with the provisions of Chapter 50, Laws of 1973.

Signature: John G. Lawson

Date: 12/13/91 Certificate No.: 11989



## AUDITOR'S CERTIFICATE

Filed for record this \_\_\_\_\_ day of \_\_\_\_\_, 1991 at \_\_\_\_\_ M.

In Book \_\_\_\_\_ of \_\_\_\_\_, at page \_\_\_\_\_ at the request of \_\_\_\_\_.

County Auditor