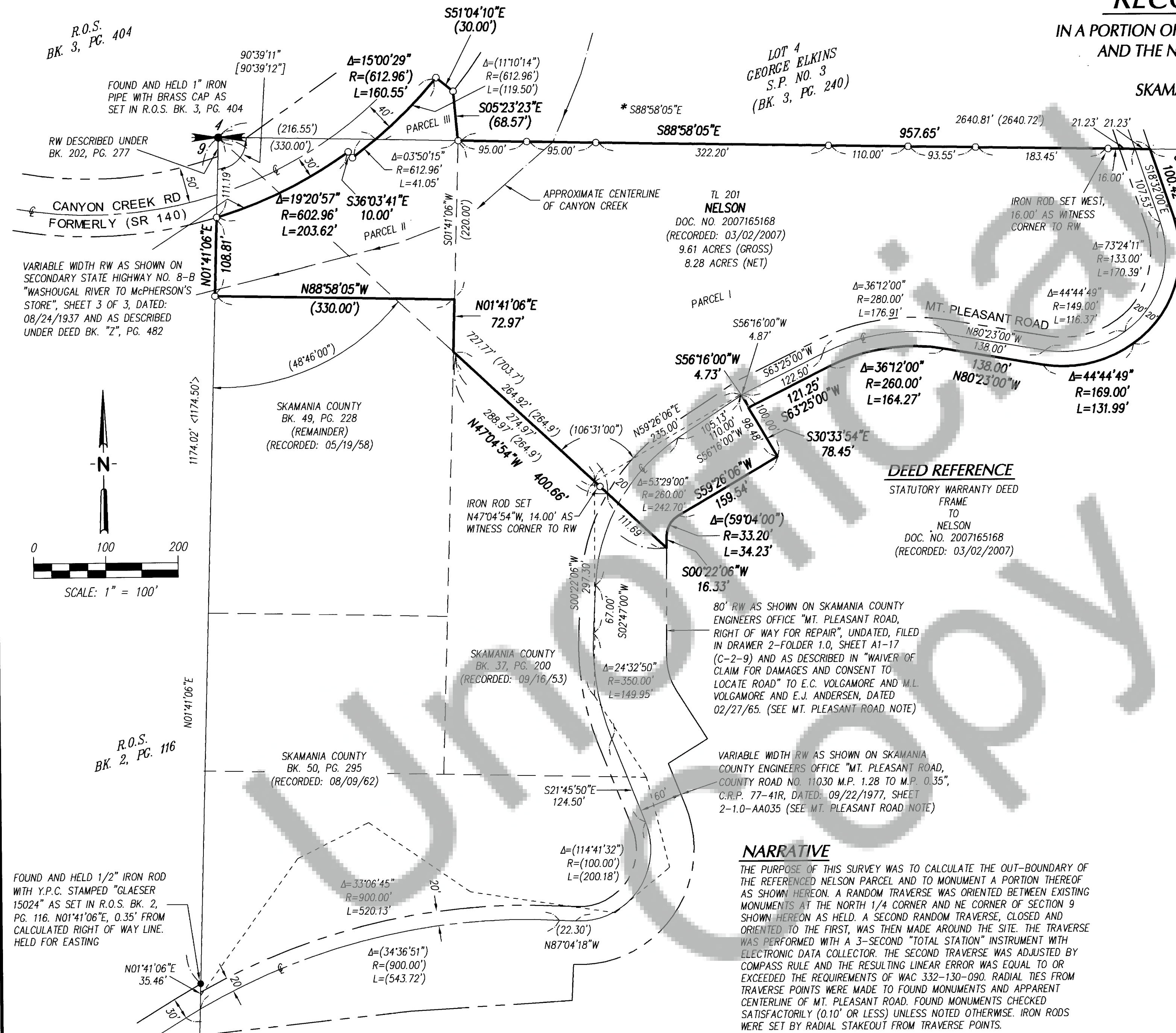
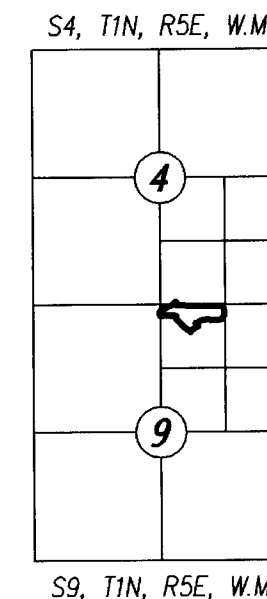


RECORD OF SURVEY

IN A PORTION OF THE SW 1/4 OF THE SE 1/4 OF SECTION 4
AND THE NW 1/4 OF THE NE 1/4 OF SECTION 9
T.1N., R.5E., W.M.
SKAMANIA COUNTY, WASHINGTON



LEGEND

- SET 5/8" x 30" IRON ROD WITH BLUE PLASTIC CAP STAMPED "AKS ENGR. PLS 32448"
- FOUND MONUMENT AS NOTED
- () RECORD INFORMATION
- [] RECORD INFORMATION AS SHOWN ON R.O.S. BK. 3, PG. 111
- < > RECORD INFORMATION AS SHOWN ON R.O.S. BK. 2, PG. 116
- Y.P.C. YELLOW PLASTIC CAP
- R.O.S. RECORD OF SURVEY
- S.P. SHORT PLAT
- RW RIGHT OF WAY

PROCEDURE

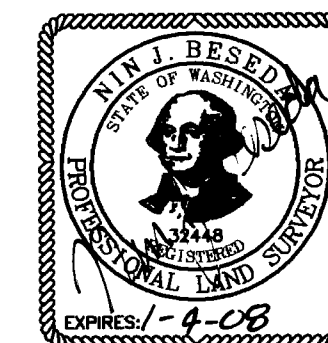
(SEE NARRATIVE)

* BASIS OF BEARINGS

THE BEARING OF S88°58'05"E ALONG THE NORTH LINE OF THE NE 1/4 OF SECTION 9, AS SHOWN ON R.O.S. BK. 3, PG. 404 ORIENTED BETWEEN EXISTING MONUMENTS AT THE NORTH 1/4 CORNER AND NE CORNER OF SECTION 9. (SEE NARRATIVE)

SURVEYOR'S CERTIFICATE

THIS MAP CORRECTLY REPRESENTS A SURVEY MADE BY ME OR UNDER MY DIRECTION IN CONFORMANCE WITH THE REQUIREMENTS OF THE SURVEY RECORDING ACT, AT THE REQUEST OF JUSTIN NELSON IN APRIL, 2007.



AUDITOR'S CERTIFICATE

FILED FOR RECORD THIS 21st DAY OF June, 2007.
AT 12:33 PM. UNDER AUDITOR'S FILE NO. 2007166589 AT
THE REQUEST OF AKS ENGINEERING AND FORESTRY, LLC.

Justin Nelson
DEPUTY COUNTY AUDITOR

JOB NUMBER:	1771	ENGINEERING • PLANNING • LANDSCAPE ARCHITECTURE
CALC. BY:	J.M.B.	FORESTRY • SURVEYING
DRAWN BY:	J.M.B.	LICENSED IN OR & WA
CHECKED BY:	N.J.B.	AKS ENGINEERING & FORESTRY
DRAWING NO.:	1771RS1.DWG	12011 NE 99TH STREET SUITE 1530 VANCOUVER, WA 98682
SHEET NO.:	1 OF 1	PHONE: (360) 882-0419 FAX: (360) 882-0426
		OFFICES LOCATED IN SHERWOOD, OR & REDMOND, OR

NARRATIVE

THE PURPOSE OF THIS SURVEY WAS TO CALCULATE THE OUT-BOUNDARY OF THE REFERENCED NELSON PARCEL AND TO MONUMENT A PORTION THEREOF AS SHOWN HEREON. A RANDOM TRAVERSE WAS ORIENTED BETWEEN EXISTING MONUMENTS AT THE NORTH 1/4 CORNER AND NE CORNER OF SECTION 9 SHOWN HEREON AS HELD. A SECOND RANDOM TRAVERSE, CLOSED AND ORIENTED TO THE FIRST, WAS THEN MADE AROUND THE SITE. THE TRAVERSE WAS PERFORMED WITH A 3-SECOND "TOTAL STATION" INSTRUMENT WITH ELECTRONIC DATA COLLECTOR. THE SECOND TRAVERSE WAS ADJUSTED BY COMPASS RULE AND THE RESULTING LINEAR ERROR WAS EQUAL TO OR EXCEEDED THE REQUIREMENTS OF WAC 332-130-090. RADIAL TIES FROM TRAVERSE POINTS WERE MADE TO FOUND MONUMENTS AND APPARENT CENTERLINE OF MT. PLEASANT ROAD. FOUND MONUMENTS CHECKED SATISFACTORILY (0.10' OR LESS) UNLESS NOTED OTHERWISE. IRON RODS WERE SET BY RADIAL STAKEOUT FROM TRAVERSE POINTS.

MT. PLEASANT ROAD NOTE

DUE TO THE LACK OF PHYSICAL "ON GROUND" MONUMENTATION FROM WHICH TO RESURRECT THE CENTERLINE ALIGNMENT OF MT. PLEASANT ROAD, I CHOSE TO USE THE SPLIT OF PHYSICAL ROAD IMPROVEMENTS TO DEVELOP IT. SEE "WAIVER OF CLAIMS FOR DAMAGES AND CONSENT TO LOCATE ROAD" TO THE HOLDER OF SKAMANIA COUNTY SHERIFF'S CERTIFICATE, DATED 09/17/1915 (40' RW). THE CENTERLINE WAS THEN CALCULATED TO MATHEMATICALLY "TIE" INTO THE CENTERLINE AS SHOWN ON SKAMANIA COUNTY ENGINEERS OFFICE "MT. PLEASANT ROAD, RIGHT OF WAY FOR REPAIR", UNDATED, FILED IN DRAWER 2-FOLDER 1.0, SHEET A1-17 (C-2-9) AND AS DESCRIBED IN "WAIVER OF CLAIM FOR DAMAGES AND CONSENT TO LOCATE ROAD" TO E.C. VOLGAMORE AND M.L. VOLGAMORE AND E.J. ANDERSEN, DATED 02/27/65 AS WELL "TIE" INTO SKAMANIA COUNTY ENGINEERS OFFICE "MT. PLEASANT ROAD, COUNTY ROAD NO. 11030 M.P. 1.28 TO M.P. 0.35", C.R.P. 77-41R, DATED: 09/22/1977, SHEET 2-1.0-AA035.

NOTE: AKS ENGINEERING & FORESTRY MAKES NO WARRANTIES AS TO MATTERS OF UNWRITTEN TITLE SUCH AS ACQUIESCENCE, ESTOPPEL, ADVERSE POSSESSION, ETC.