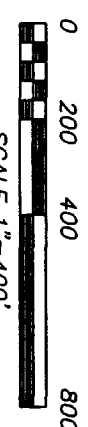
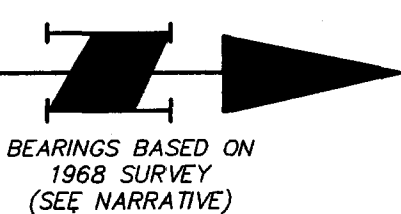


# SURVEY

in GOVT. LOT 1  
(FRACTIONAL NW 1/4 NE 1/4)  
& GOVT. LOT 2  
(FRACTIONAL NE 1/4 NW 1/4)  
of SECTION 31, T7N, R5E, W.M.  
SKAMANIA COUNTY, WA.

## DEED REFERENCE

WITHAM TO EWITER  
AT# 2006163472 &  
AT# 2006163473

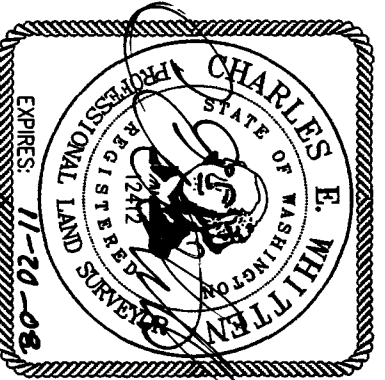


## LEGEND

- POSITION OF DNR CONCRETE MONUMENT WITH BRASS CAP  
AS ESTABLISHED IN SURVEY FOR THE STATE OF  
WASHINGTON, DEPARTMENT OF NATURAL RESOURCES  
IN DECEMBER, 1968, BY JAMES PROCHNAU, OREGON  
PE# 4185. (TIED JAN, 2007, IF NOTED AS FOUND)
- ( ) BEARINGS & DISTANCES (NAD 27) TAKEN FROM THE  
"PROCHNAU DECEMBER, 1968 SURVEY MAP" (NOTED  
ABOVE) FILED WITH THE DNR IN THEIR FILE E-7-17  
(AVAILABLE ONLINE)
- [ ] GLO RECORD CHAINAGE (SEE SURVEY HISTORY)

## SURVEYOR'S CERTIFICATE

This map correctly represents a survey made by me or under  
my direction in conformance with the requirements of the Survey  
Recording Act at the request of MARK EWITER  
in JANUARY, 2007



## AUDITOR'S CERTIFICATE

Filed for record this 20th day of April, 2002  
at 12:41 p.m. under AT# 2001165908 at the  
request of Hogedorn, Inc.

(Signed) *Paul J. A.*  
(Deputy County Auditor)

**HAGEDORN, INC.**  
Surveying and Engineering

1924 Broadway Vancouver, Wa. 98663  
Ph: (360) 696-4428 (503) 283-6778

SCALE: 1"=400'  
DATE: 4/25/07  
JOB NO.: 06-069  
CALC. BY: CEW  
DRAWN BY: CC  
CHECKED BY: BPT  
DWG# 06-069  
PAGE 1 OF 2

NOTE: Hogedorn, Inc. makes no warranties as to matters of unwritten  
title such as acquiescence, estoppel, adverse possession, etc.

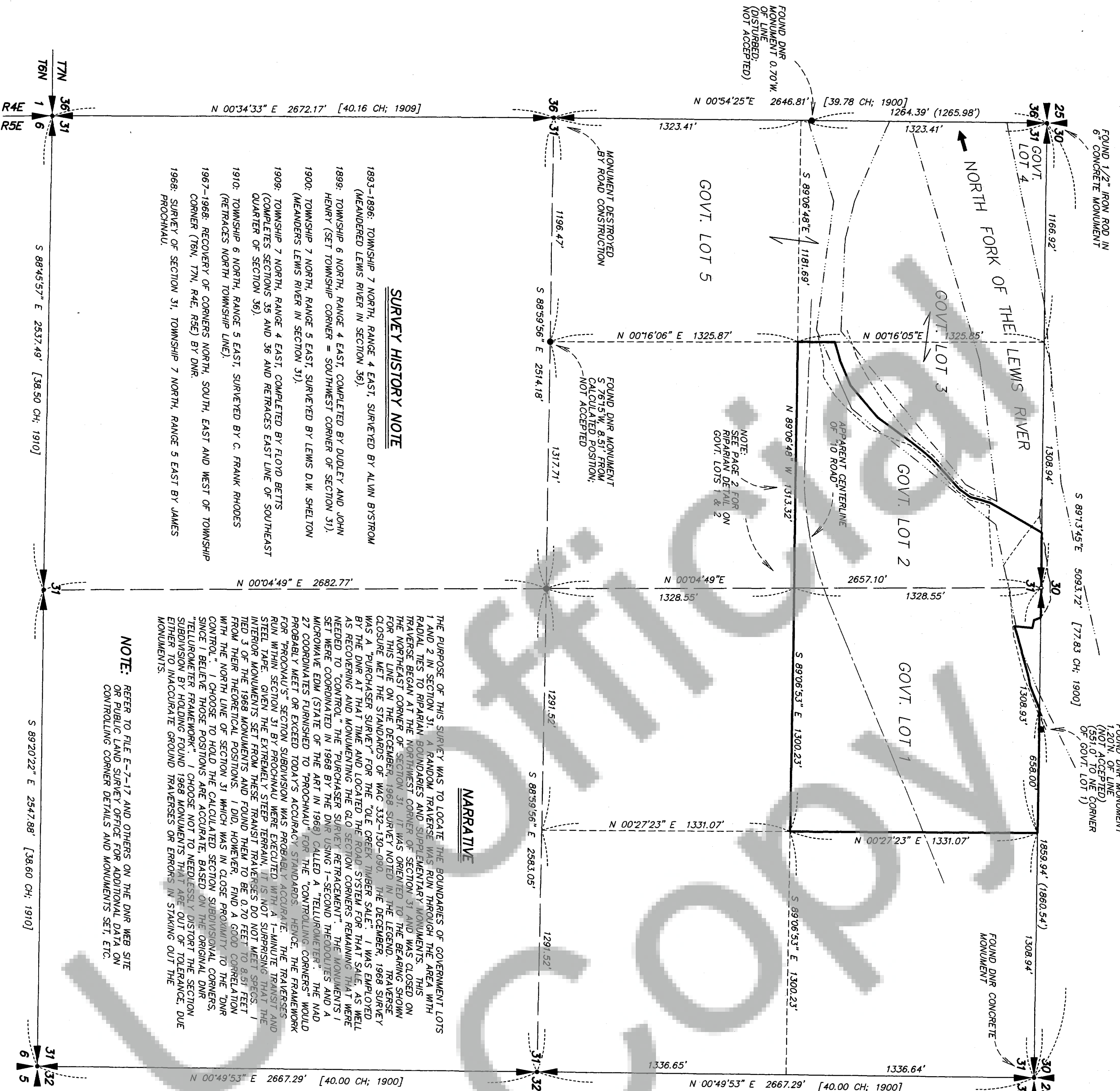
## NARRATIVE

THE PURPOSE OF THIS SURVEY WAS TO LOCATE THE BOUNDARIES OF GOVERNMENT LOTS  
1 AND 2 IN SECTION 31. A RANDOM TRAVERSE WAS RUN THROUGH THE AREA WITH  
RADIAL TIES TO RIPARIAN BOUNDARIES AND SUPPLEMENTARY MONUMENTS. THIS  
TRAVERSE BEGAN AT THE NORTHWEST CORNER OF SECTION 31 AND WAS CLOSED ON  
FOR THIS LINE ON THE DECEMBER, 1968 SURVEY NOTED IN THE LEGEND. TRAVERSE  
CLOSURE MET THE STANDARDS OF WAC 332-130-090. THE DECEMBER, 1968 SURVEY  
WAS A "PURCHASER SURVEY" FOR THE "OLE OREK TIMBER SALE". I WAS EMPLOYED  
BY THE DNR AT THAT TIME AND LOCATED THE ROAD SYSTEM FOR THAT SALE AS WELL  
AS RECOVERING AND MONUMENTING THE GLO SECTION CORNERS REMAINING THAT WERE  
NEEDED TO "CONTROL" THE "PURCHASER SURVEY RETRACEMENT". THE MONUMENTS I  
SET WERE COORDINATED IN 1968 BY THE DNR USING 1-SECOND THEODOLITES AND A  
MICROMETER EDM (STATE OF THE ART IN 1968) CALLED A "TELLURIMETER". THE NAD  
27 COORDINATES FURNISHED TO "PROCHNAU" FOR THE "CONTROLLING CORNERS" WOULD  
PROBABLY MEET OR EXCEED TODAY'S ACCURACY STANDARDS. HENCE, THE FRAMEWORK  
FOR "PROCHNAU'S" SECTION SUBDIVISION WAS PROBABLY ACCURATE. THE TRAVERSES  
RUN WITHIN SECTION 31 BY PROCHNAU WERE EXECUTED WITH A 1-MINUTE TRANSIT AND  
STEERING. GIVEN THE EXTREMELY STEEP TERRAIN, IT IS NOT SURPRISING THAT THE  
TIES OF THE MONUMENTS SET FROM THESE TRAVERSES DID NOT MEET STEADY. I  
TIED THE MONUMENTS TO THE THEORETICAL POSITIONS. I DID, HOWEVER, FIND A GOOD CORRELATION  
WITH THE NORTH LINE OF SECTION 31 WHICH WAS IN CLOSE PROXIMITY TO THE DNR  
CONTROL. I CHOOSE TO HOLD THE CALCULATED SECTION SUBDIVISIONAL CORNERS,  
SINCE I BELIEVE THOSE POSITIONS ARE ACCURATE, BASED ON THE ORIGINAL DNR  
"TELLURIMETER FRAMEWORK". I CHOOSE NOT TO NEEDLESSLY DISTORT THE SECTION  
SUBDIVISION BY HOLDING FOUND 1968 MONUMENTS THAT ARE OUT OF TOLERANCE, DUE  
EITHER TO INACCURATE GROUND TRAVERSES OR ERRORS IN STAKING OUT THE  
MONUMENTS.

NOTE: REFER TO FILE E-7-17 AND OTHERS ON THE DNR WEB SITE  
OR PUBLIC LAND SURVEY OFFICE FOR ADDITIONAL DATA ON  
CONTROLLING CORNER DETAILS AND MONUMENTS SET, ETC.

## SURVEY HISTORY NOTE

- 1893-1896: TOWNSHIP 7 NORTH, RANGE 4 EAST, SURVEYED BY ALVIN BYSTROM  
(MEANDERED LEWIS RIVER IN SECTION 36).
- 1898: TOWNSHIP 6 NORTH, RANGE 4 EAST, COMPLETED BY DUDLEY AND JOHN  
HENRY (SET TOWNSHIP CORNER = SOUTHWEST CORNER OF SECTION 31).
- 1900: TOWNSHIP 7 NORTH, RANGE 5 EAST, SURVEYED BY LEWIS D.W. SHELTON  
(MEANDERS LEWIS RIVER IN SECTION 31).
- 1908: TOWNSHIP 7 NORTH, RANGE 4 EAST, COMPLETED BY FLOYD BETTS  
(COMPLETES SECTIONS 35 AND 36 AND RETRACES EAST LINE OF SOUTHEAST  
QUARTER OF SECTION 36).
- 1910: TOWNSHIP 6 NORTH, RANGE 5 EAST, SURVEYED BY C. FRANK RHODES  
(RETRACES NORTH TOWNSHIP LINE).
- 1967-1968: RECOVERY OF CORNERS NORTH, SOUTH, EAST AND WEST OF TOWNSHIP  
CORNER (T8N, T7N, R4E, R5E) BY DNR.
- 1968: SURVEY OF SECTION 31, TOWNSHIP 7 NORTH, RANGE 5 EAST BY JAMES  
PROCHNAU.





RIVER RECESSION NOTE

THE NORTH FORK OF THE LEWIS RIVER HAS AN INTERESTING HISTORY IN THIS AREA. IN 1894-1896, IT EVENTUALLY FLOWED IN TWO CHANNELS ACROSS THE NORTHWEST QUARTER OF SECTION 31. BY 1900, IT HAD MOVED TO THE NORTHERN CHANNEL (SEE RIVER NOTES). IN ABOUT 1961, THE SWIFT HYDRO PROJECT CREATED A CANAL (TO SWIFT POWERHOUSE #2) OVER THE SOUTH HALF OF SECTION 29. ABOUT 95% OF THE RIVER FLOW WAS DIVERTED INTO THIS CANAL. IN EFFECT LEAVING A "SMALL CREEK" RUNNING IN THE OLD RIVER CHANNEL THROUGH SECTIONS 30 AND 31. THE ORDINARY HIGH WATER (OHW) MARK ON THE LEFT BANK SUBSEQUENTLY RETREATED NORTH TO THE SOUTH MARGIN OF THE RESULTANT "SMALL CREEK" AND REMAINED THERE FOR OVER 40 YEARS. THE NORTH LINE OF GOVERNMENT LOT 1, THEN MOVED NORTH TO THE NORTH LINE OF SECTION 31. IN ABOUT 2004, THE CANAL BREACHED AND DRAINED. FOR THE FOLLOWING TWO YEARS (DURING RECONSTRUCTION) THE FULL FLOW OF THE LEWIS RIVER RETURNED TO THE OLD CHANNEL, WHICH BY THEN HAD REVEGETATED WITH ALDER TREES, ETC. THE "2005 OHW MARK" (SHOWN ON THIS SURVEY) INDICATES THE SOUTHERN LIMIT OF THE NEWLY REPAIRED CANAL, LEAVING THE "SMALL STREAM" TO FOLLOW THE "THALWEG" OF THE RECENTLY EXPOSED BRAIDED RIVER CHANNEL. NOW, THE NORTH LINE OF GOVERNMENT LOT 1 MOVES BACK TO THE 2007 OHW MARK AS DEPICTED ON THE SURVEY MAP. IT IS PROBABLE THAT THIS OHW MARK COULD MIGRATE NORTHERLY AGAIN AS THE "SMALL STREAM" SEEKS THE LOWEST LEVEL OF THE "SLOPING BRAIDED CHANNEL".

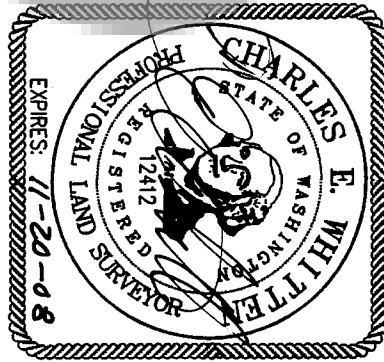
NORTH FORK OF THE LEWIS RIVER

GOVT. LOT 2

GOVT. LOT 2  
GOVT. LOT 1

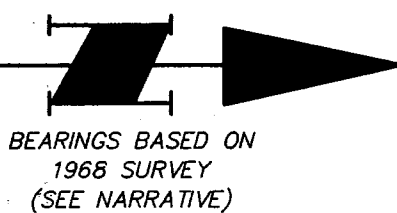
RIVER NOTES

LOCATING THE BOUNDARIES OF GOVERNMENT LOTS 1, 2, AND 3 IN SECTION 31 PRESENTS SEVERAL INTERESTING PROBLEMS. NORMALLY, THE ORDINARY HIGH WATER MARK IS LOCATED AND USED AS THE RIPARIAN BOUNDARY OF GOVERNMENT LOTS SUCH AS THESE. THE SITUATION IN THIS SURVEY IS THAT THE LEWIS RIVER NO LONGER FLOWS BETWEEN GOVERNMENT LOTS 2 AND 3 AS DEPICTED ON SHELTON'S 1900 QLO TOWNSHIP PLAT. IN 1896, BYSTROM (SEE SURVEY HISTORY NOTE) RUNS SOUTH ON THE WEST LINE OF SECTION 31 AND SETS A MEANDER CORNER ON THE "RIGHT BANK OF LEWIS RIVER" AT 3.29 CHAINS. HE CONTINUES SOUTH AND SAYS "ACROSS SLOUGH TO NORTH SIDE OF ISLAND". HE CONTINUES SOUTH TO THE "SOUTH SIDE OF ISLAND" SETTING MEANDER CORNERS AT EACH POINT. HE THEN CONTINUES TO THE "LEFT BANK OF LEWIS RIVER" AND SETS THE 4TH MEANDER CORNER. WHEN SHELTON RUNS THIS LINE NORTH IN 1900, HE NOTES THAT BYSTROM'S 4TH MEANDER CORNER "HAS BEEN WASHED AWAY BY THE RIVER". HE THEN RUNS NORTH TO BYSTROM'S 3RD MEANDER CORNER ON THE SOUTH SIDE OF THE ISLAND. AS HE CONTINUES NORTH TO THE NORTH SIDE OF THE ISLAND HE NOTES "THE OLD MEANDER CORNER HAS BEEN DESTROYED BY THE WASHING AWAY OF THE NORTH SIDE OF THE ISLAND. THE MAIN RIVER NOW RUNS NORTH OF THE ISLAND." GIVEN THIS HISTORY, IT EXPLAINS WHY THE "CHANNEL" BETWEEN GOVERNMENT LOTS 2 AND 3 IS NOW A SHALLOW SLOUGH COMPLETELY TIMBERED (EVIDENTLY SINCE THE EARLY 1900S). THERE IS NO REMAINING OBVIOUS ORDINARY HIGH WATER MARK (OHW). I CAN VISUALIZE THIS BEING AN OLD CHANNEL IN THE 1800S, AND THERE IS A DEFINITE "RIVER TERRACE" TYPE BANK ON THE SOUTHEAST SIDE. I MADE SURVEY TIES TO THE TOE OF THIS BANK AS AN APPROXIMATION OF THE 1900 OHW MARK. THE NORTHWESTERLY SIDE IS A "LOW SLOPING BANK" AS SHELTON DESCRIBED IT IN 1900. HIS MEANDERS INDICATE THAT THIS CHANNEL WAS NARROW AT THE NORTHEAST END AND FLARING WIDER AS IT PROGRESSED SOUTHWESTERLY. I LOCATED WHAT COULD LOGICALLY BE THE NORTHWESTERLY LIMITS OF THE OLD CHANNEL AND MADE SURVEY TIES TO THEM ALSO. SINCE THE DNR OWNS GOVERNMENT LOT 3, I DISCUSSED THIS SITUATION WITH KEN BROWN, AQUATIC SURVEYOR WITH THE DNR IN OLMPIA, WA. HE POINTED OUT THAT THE NORTH FORK OF THE LEWIS RIVER HAS PROBABLY NEVER BEEN NAVIGABLE THIS FAR UPSTREAM. WE MUTUALLY AGREED THAT A RESOLUTION OF THE BOUNDARY BETWEEN GOVERNMENT LOTS 2 AND 3 MIGHT BEST BE ADOPTING THE "THREAD" OF THE OLD CHANNEL. (THIS WOULD BE AKIN TO ADJACENT OWNERS TAKING TITLE TO THEIR RESPECTIVE "THALWEGS" OF A VACATED STREET). FOR THE SOUTHWESTERLY 1200 FEET OF THIS COMMON BOUNDARY I USED THIS PROCEDURE (FOLLOWING AND MONUMENTING THE "THREAD") FROM THE "THROAT" OF THE OLD CHANNEL (ABOUT 270 FEET SOUTH OF THE NORTH LINE OF SECTION 31). I USED A MEAN BEARING OF THE 1900 MEANDERS AT THIS POINT, TO EXTEND NORTHEASTERLY. CONCURRENTLY, THIS PROJECTS TO A POINT VERY NEAR THE INTERSECTION OF THE PRESENT 2007 OHW MARK WITH THE SECTION LINE. I ADOPT THAT "OHW INTERSECTION" AS THE NORTHWEST CORNER OF GOVERNMENT LOT 2.



LEGEND

- SET 5/8" x 30" IRON REBAR WITH ORANGE PLASTIC CAP STAMPED "WHITTEN 12412" WITH STEEL FENCEPOST SET ALONGSIDE
- OHW = ORDINARY HIGH WATER



PAGE 2 OF 2  
**SURVEY**  
in GOVT. LOT 1  
(FRACTIONAL NW 1/4 NE 1/4)  
& GOVT. LOT 2  
(FRACTIONAL NE 1/4 NW 1/4)  
of SECTION 31, T7N, R5E, W.M.  
SKAMANIA COUNTY, WA.

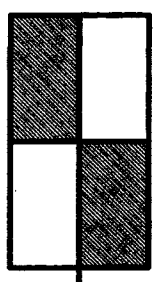
N 00°16'05"E 200.39'  
N 74°00'00"E 100.45'  
N 67°00'00"E 148.00'  
N 49°30'00"E 220.00'  
N 36°30'00"E 228.00'  
N 36°00'00"E 136.00'  
N 47°30'00"E 225.00'  
N 15°30'00"E 110.00'  
N 36°00'00"E 72.00'  
N 30°15'00"E 322.00'  
S 89°13'45"E 454.88'  
S 89°13'45"E 658.00'  
S 74°30'00"W 228.00'  
S 79°00'00"W 55.00'  
S 67°50'00"W 137.00'  
S 72°00'00"W 46.00'  
N 05°30'00"E 98.00'  
N 19°20'00"W 39.50'  
N 77°30'00"W 42.00'  
N 161.88'  
S 293.00'  
N 15°30'00"E 110.00'  
N 36°00'00"E 72.00'  
N 30°15'00"E 322.00'  
S 89°13'45"E 454.88'  
S 89°13'45"E 658.00'  
S 74°30'00"W 228.00'  
S 79°00'00"W 55.00'  
S 67°50'00"W 137.00'  
S 72°00'00"W 46.00'  
N 05°30'00"E 98.00'  
N 19°20'00"W 39.50'  
N 77°30'00"W 42.00'  
N 161.88'  
S 293.00'

S 89°06'53"E 1300.23'

SOUTHWEST CORNER  
OF GOVT. LOT 2

APPARENT CENTERLINE  
OF 70 ROAD

N 89°06'48" W 1313.32'



**HAGEDORN, INC.**  
Surveying and Engineering

1924 Broadway Vancouver, WA. 98663  
Ph: (360) 696-4428 (503) 283-6778

SCALE: 1"=100'  
DATE: 4/18/07  
JOB NO.: 06-069

CALC. BY: CEW  
DRAWN BY: CCW  
CHECKED BY: BPT  
DWG# 06-069p2  
PAGE 2 OF 2