

SURVEY

OF A BOUNDARY LINE ADJUSTMENT  
IN A PORTION OF  
GOVERNMENT LOT 1  
(FRACTIONAL SE 1/4 OF THE SE 1/4 IN  
SECTION 23, T. 2 N., R. 6 E., W.M.,  
SKAMANIA COUNTY, WASHINGTON

NARRATIVE

THE PURPOSE OF THIS SURVEY IS TO BOUNDARY LINE ADJUST THE  
PROPERTY LINE BETWEEN LOT 3 OF THE "PINE BOULDER SHORT PLAT",  
AS RECORDED IN AUDITOR'S FILE NUMBER 2006160727 AND LOT 4 OF  
THE "PINE MARTEN SHORT PLAT" AS RECORDED IN AUDITOR'S FILE  
NUMBER 2005160800 TO THE CONFIGURATIONS AS RECORDED IN  
AUDITOR'S FILE NUMBERS 2006164329 AND 2006164330.

SURVEY REFERENCES:

- 1) "PINE BOULDER SHORT PLAT", AF NO. 2006160727  
2) "PINE MARTEN SHORT PLAT", AF NO. 2005160800

DEED REFERENCES:

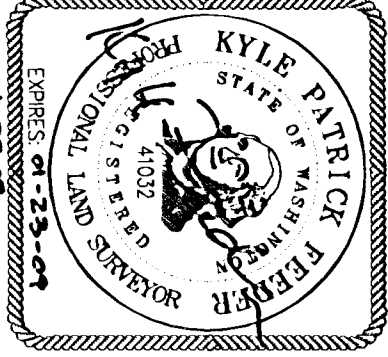
GRANTOR: THREE RIVERS RECREATIONAL AREA SAUER, LLC  
GRANTEE: PINE CREEK BOULDER, LLC  
AF NO.: 2006164329  
DATED: 12/29/2006  
GRANTOR: PINE CREEK BOULDER, LLC  
GRANTEE: THREE RIVERS RECREATIONAL AREA SAUER, LLC  
AF NO.: 2006164330  
DATED: 12/29/2006

LEGEND

- FOUND MONUMENT AS NOTED  
○ CALCULATED POSITION  
1/2" x 24" IRON ROD WITH  
(FEEDER 41032) CAP SET  
( ) RECORD DISTANCE  
AF NO AUDITOR'S FILE NUMBER  
----- GEOTECHNICAL SETBACK LINE  
----- TOP OF SLOPE

SURVEYOR'S CERTIFICATE

THIS MAP CORRECTLY REPRESENTS AN ACTUAL SURVEY MADE BY ME OR  
UNDER MY DIRECTION IN CONFORMANCE WITH THE REQUIREMENTS OF  
THE SURVEY RECORDING ACT AT THE REQUEST OF GERALD SAUER  
IN AUGUST, 2006.



Kyle P. Feeder 1-24-07  
KYLE P. FEEDER, PROFESSIONAL  
LAND SURVEYOR, LS #41032

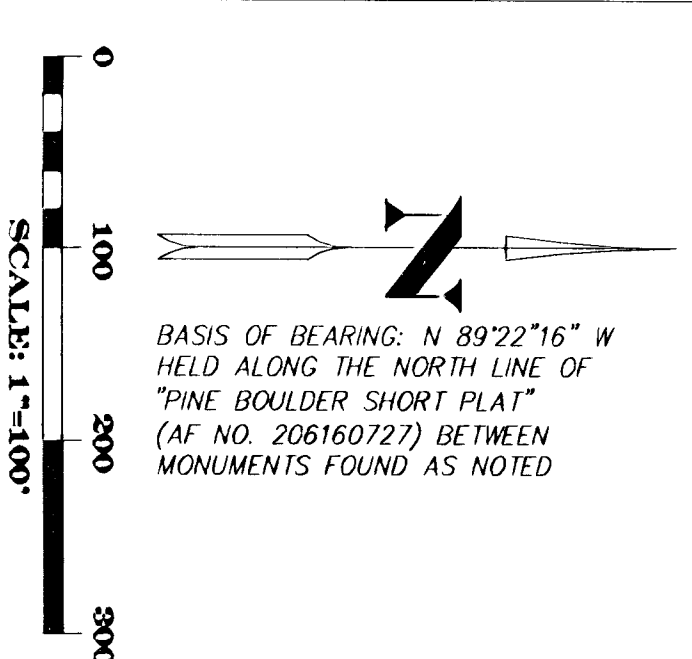
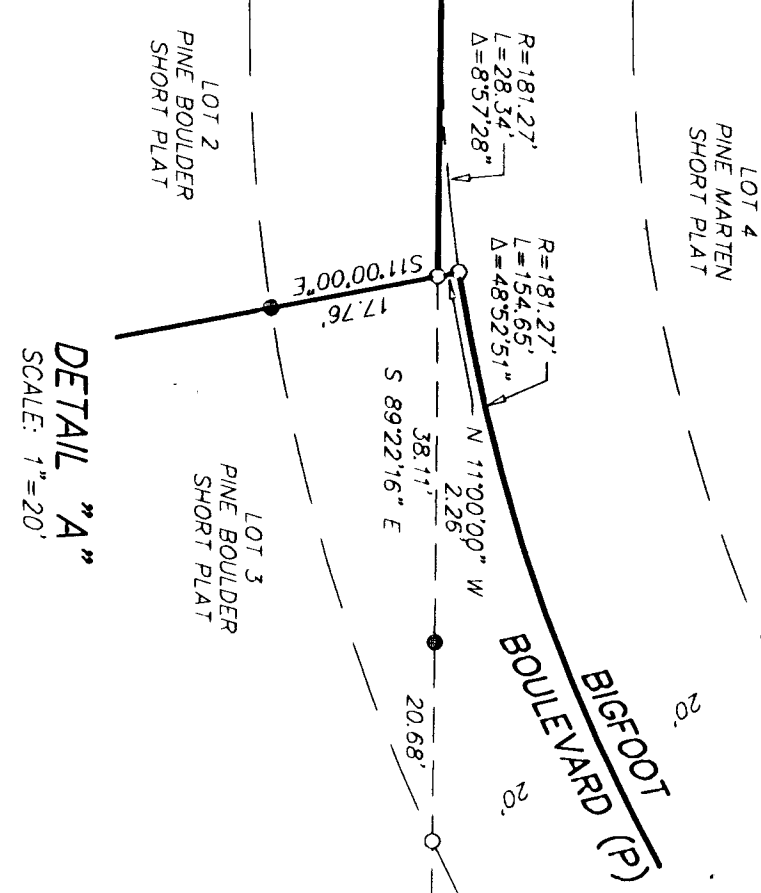
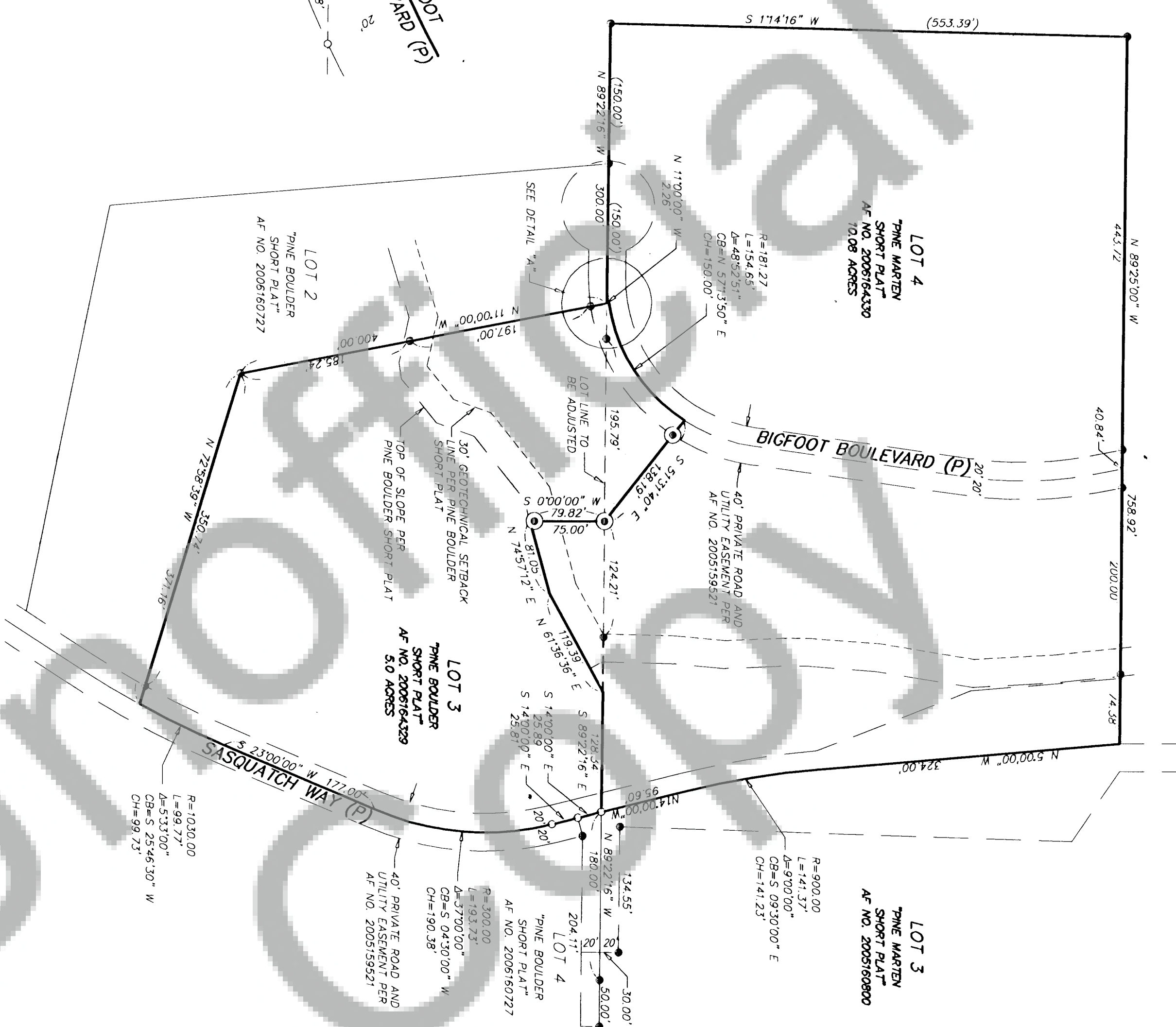
DATE:	1-11-07
SCALE:	1"=50'
JOB NO.:	06-018
CALC BY:	KPF
DRAWN BY:	GJF
CHECKED BY:	KPF
SHEET	1 OF 1

KPF

SURVEYING, INC.

1514 N.E. 267TH AVE. CAMAS, WA 98607

360-834-0174 FAX: 360-838-0155



BASIS OF BEARING: N 89°22'16" W  
HELD ALONG THE NORTH LINE OF  
"PINE BOULDER SHORT PLAT"  
(AF NO. 206160727) BETWEEN  
MONUMENTS FOUND AS NOTED

SCALE: 1"=100'

KPF SURVEYING, INC. MAKES NO WARRANTIES AS TO MATTERS OF UNWRITTEN TITLE  
SUCH AS ADVERSE POSSESSION, ACQUESCENCE, ESTOPPEL, ETC.  
A FIELD TRAVERSE WAS PERFORMED USING A FIVE SECOND TOTAL STATION. THE  
TRAVERSE MET THE MINIMUM STANDARDS FOR SURVEYS AS DESIGNATED IN  
WAC 332-130-090. ALL CORNERS NOTED AS FOUND WERE VISITED ON AUGUST 19, 2006  
06018.DWG

AUDITOR'S CERTIFICATE

FILED FOR RECORD THIS 20th DAY OF January 2007.  
AT 1:47 P.M., IN AUDITOR'S FILE NUMBER 2007164812  
AT THE REQUEST OF KPF SURVEYING, INC.

SIGNED Gerald Sauers  
DEPUTY COUNTY AUDITOR