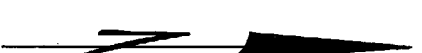


RECORD OF SURVEY  
FOR LONGVIEW FIBRE COMPANY  
IN SECTION 28, T 3 N, R 6 E, W.M.  
SKAMANIA COUNTY, WASHINGTON

NOVEMBER 2005

DEED REFERENCE:  
SECTION 28: THE EAST HALF, THE SOUTHWEST QUARTER  
BOOK 112 PAGE 45, AF: 106251



LEGEND

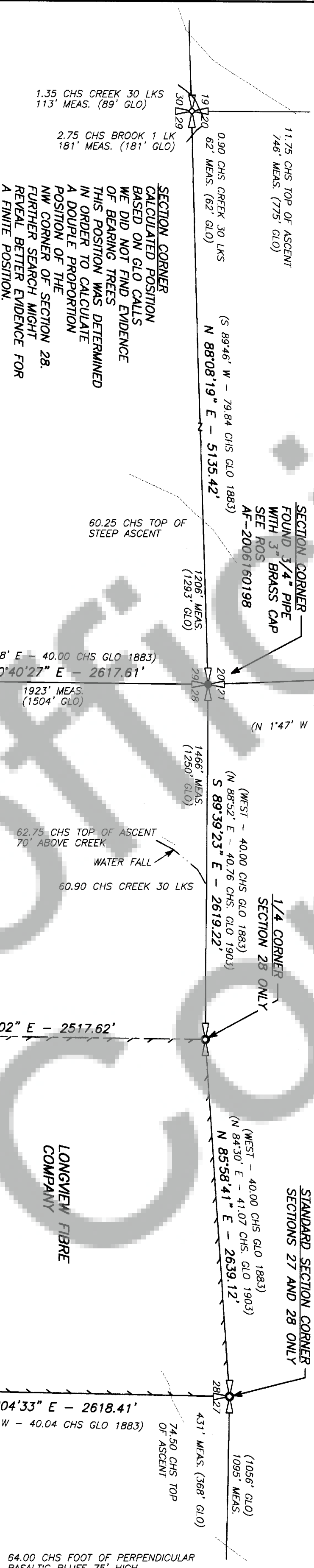
- SECTION CORNER, 1/4 CORNER, AS NOTED
- FOUND MONUMENT, AS NOTED
- SET 3/4" X 36" PIPE WITH STAMPED 2" BRASS CAP AS SHOWN
- AF AUDITOR'S FILE NUMBER
- ( ) RECORD BEARING AND/OR DISTANCE AS NOTED
- LINE MARKED WITH 1/2" X 60" FIBER GLASS RODS, RED AND WHITE FLAGGING ALONG LINE BETWEEN RODS, TREES ALONG LINE PAINTED WITH BLUE PAINT.

BASIS OF BEARING

BEARINGS ARE STATE PLANE  
MAD 83(91) WASHINGTON SOUTH  
BASED ON GPS OBSERVATIONS AT  
FEDERAL BASE NETWORK CONTROL STATION "P44"  
CLARK COUNTY GPS CONTROL POINT "CC70"  
CLARK COUNTY GPS CONTROL POINT "CC62"  
CONVERGANCE = -1'08"12"  
AT THE NORTH EAST CORNER SECTION 28

SCALE: 1 INCH = 600 FEET

DISTANCES SHOWN ARE GRID  
TO CONVERT TO GROUND DISTANCE  
SCALE MAP BY A FACTOR OF 1.00006925



AUDITOR'S CERTIFICATE

FILED FOR RECORD THIS 24<sup>th</sup> DAY OF July, 2005  
AT 11:30 AM IN BOOK OF SURVEYS AT PAGE  
AT THE REQUEST OF LONGVIEW FIBRE COMPANY.

20061602403  
AUDITOR'S FILE NUMBER

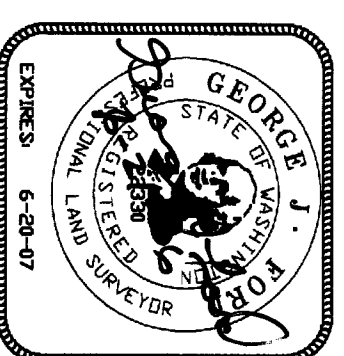
Michael Carlson  
COUNTY AUDITOR

SURVEYOR'S CERTIFICATE

THIS MAP CORRECTLY REPRESENTS A SURVEY MADE BY ME OR  
UNDER MY DIRECTION IN CONFORMANCE WITH THE REQUIREMENTS  
OF THE SURVEY RECORDING ACT AT THE REQUEST OF LONGVIEW  
FIBRE COMPANY IN JUNE 2001.

GEORGE J. FORD, PLS  
CERTIFICATE NO. 22330

LONGVIEW FIBRE COMPANY  
LONGVIEW, WA 98632

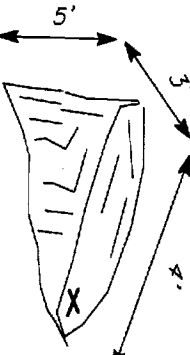
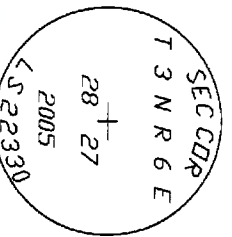
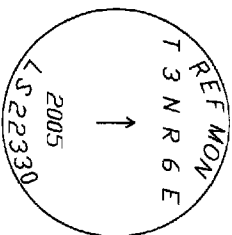




RECORD OF SURVEY  
FOR LONGVIEW FIBRE COMPANY  
IN SECTION 28, T 3 N, R 6 E, W.M.  
SKAMANIA COUNTY, WASHINGTON

THE PURPOSE OF THIS SURVEY WAS TO LOCATE THE PROPERTY LINES OF LONGVIEW FIBRE COMPANY IN SECTION 28. THE SECTION WAS SURVEYED BY CHARLES E. SEARS IN 1883, CONTRACT NO. 287. ROBERT F. WHITAM RESURVEYED THE NORTH LINE OF SECTION 28 AND THE EAST LINE OF SECTION 20 IN 1903, CONTRACT NO. 600. HAMPTUR CORPORATION IN SURVEY FOR LONGVIEW FIBRE COMPANY ESTABLISHED THE NORTHEAST CORNER OF SECTION 28 BASED ON GLO BEARING TREE EVIDENCE. I DID NOT FEEL THE STUMP PATTERN WAS CONCLUSIVE PROOF OF THE ORIGINAL CORNER. WE TIED THE GLO TOPOGRAPHICAL CALLS AND FOUND CONCLUSIVE PROOF OF THE NORTHEAST CORNER OF SECTION 20. THE POSITION OF THE CORNER BASED ON TOPO CALLS IS 200 FEET SOUTH OF THE HAMPTUR CORNER. THE HAMPTUR POSITION DOES CONCLUDE WITH A DOUBLE PROPORTION. SEARS RAN THE NORTH LINE OF SECTION 28 FIRST. HE THEN RAN THE WEST LINE OF SECTION 28. I BELIEVE SEARS FOUND HE HAD AN ERROR AT THE NORTHWEST CORNER OF SECTION 28 AND CONTINUED THE WEST LINE OF SECTION 28 TO A NORMAL 80 CHAINS. IN SPT OF THE WEAK GLO EVIDENCE AT THE HAMPTUR LOCATION I COULD NOT FIND ANOTHER LOCATION THAT AGREED BETTER WITH THE GLO RECORD. WHITAM VERIFIED THE KINK CREATED BY SEARS. I ESTABLISHED THE NORTH 1/4 CORNER OF SECTION 28 BASED ON THE 1903 GLO RECORD. THE NORTHEAST CORNER OF SECTION WAS ESTABLISHED FROM ONE BEARING TREE AND THE DEFINITE BLUFF CALL TO THE EAST. THE OTHER BEARING TREES WERE NOT FOUND. THIS SOLUTION AGREES BEST WITH ALL THE ELEMENTS OF THE GLO RECORD.

THE SURVEY WAS DONE WITH LEICA SERIES 1200 GPS RECEIVERS AND A LEICA TC-1105 TOTAL STATION. CONTROL PAIRS WERE ESTABLISHED USING GPS RECEIVERS THROUGH OUT THE PROJECT AREA BASED ON TIES TO THE NOTED CONTROL. TRAVERSES WERE EITHER CLOSED LOOP OR WERE CLOSED ON GPS CONTROL POINTS.

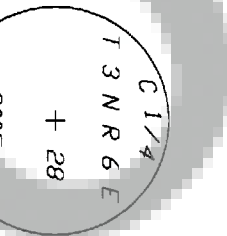
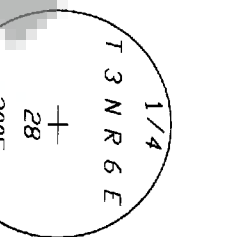
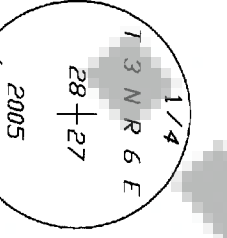
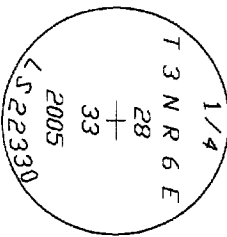


SECTION CORNER  
CHISELED "X" IN ROCK OUTCROP  
POSITION BASED ON FOUND GLO BEARING TREE  
FOUND GLO EVIDENCE:  
36" FIR SMAG WITH VISIBLE SCRIBE  
N75°56'E AT 36.3' (N75°45'E AT 55 LKS)  
24" FIR SMAG NO MARKS VISIBLE  
S57°E AT 23.7' (S86°E AT 30 LKS)  
HEMLOCK STUMP BADLY DECAYED  
N13°E AT 8.6' (N14°W AT 13 LKS)  
CORNER POSITION BASED ON GLO RECORD  
BEARING AND DISTANCE FROM 36" FIR SMAG  
NEW REFERENCES:  
20" FIR N32°E AT 10.10'  
SCRIBED [13N R6E S27 BT]  
12" FIR N42°W AT 10.30'  
SCRIBED [13N R6E S28 BT]  
14" FIR S36°W AT 13.70'  
SCRIBED [13N R6E S33 BT]  
16" FIR S18°E AT 19.35'  
SCRIBED [13N R6E S34 BT]  
STEEL FENCE POST  
EAST AT 3.0'

STANDARD SECTION CORNER  
CORNER POSITION IS IN A  
20" HEMLOCK  
SET 3/4" PIPE WITH  
A 2" BRASS CAP  
AS A REFERENCE MONUMENT  
N 39°42' W AT 4.23'  
FROM CORNER POSITION  
FOUND REFERENCES:  
50" FIR STUMP S44°W AT 11 LKS (7.3'0  
SCRIBE VISIBLE  
40" FIR N30°W AT 52 LKS (34.3')  
NO VISIBLE MARKS  
THERE WERE NO REMAINS OF THE  
TWO HEMLOCK REFERENCES  
TO THE REFERENCE MONUMENT  
17" HEMLOCK S50°W AT 3.63'  
SCRIBED [RM 13N R6E BT]  
15" FIR N83°W AT 20.29'  
SCRIBED [RM 13N R6E BT]  
12" FIR N15°E AT 14.53'  
SCRIBED [RM 13N R6E BT]  
17" FIR S60°E AT 8.62'  
SCRIBED [RM 13N R6E BT]  
STEEL FENCE POST  
NORTH AT 2.0'

STANDARD SECTION CORNER  
SET 3/4" PIPE  
2" BRASS CAP FROM  
FOUND GLO EVIDENCE:  
20" CEDAR SMAG WITH  
BURNED OUT FACE  
N 79°30' W AT 26 LKS (17.2')  
CORNER SET AT GLO DISTANCE  
AND BEARING FROM ROOT  
WELL LOCATION.  
NEW REFERENCES:  
40" FIR STUMP S38°E AT 33.92'  
NO SCRIBE  
42" FIR STUMP EAST AT 10.24'  
NO SCRIBE  
25" FIR SMAG S12°W AT 14.05'  
NO SCRIBE  
STEEL FENCE POST  
WEST AT 1.0'

SECTION CORNER  
CHISELED "X" IN ROCK OUTCROP  
POSITION BASED ON FOUND GLO BEARING TREE  
FOUND GLO EVIDENCE:  
36" FIR SMAG WITH VISIBLE SCRIBE  
N75°56'E AT 36.3' (N75°45'E AT 55 LKS)  
24" FIR SMAG NO MARKS VISIBLE  
S57°E AT 23.7' (S86°E AT 30 LKS)  
HEMLOCK STUMP BADLY DECAYED  
N13°E AT 8.6' (N14°W AT 13 LKS)  
CORNER POSITION BASED ON GLO RECORD  
BEARING AND DISTANCE FROM 36" FIR SMAG  
NEW REFERENCES:  
20" FIR N32°E AT 10.10'  
SCRIBED [13N R6E S27 BT]  
12" FIR N42°W AT 10.30'  
SCRIBED [13N R6E S28 BT]  
14" FIR S36°W AT 13.70'  
SCRIBED [13N R6E S33 BT]  
16" FIR S18°E AT 19.35'  
SCRIBED [13N R6E S34 BT]  
STEEL FENCE POST  
EAST AT 3.0'



1/4 CORNER  
SET 3/4" PIPE  
WITH 2" BRASS CAP  
NEW REFERENCES:  
17" FIR S45°E AT 25.5'  
SCRIBED [1/4 S33 BT]  
12" ALDER N66°W AT 7.18'  
BARK SCRIBED [1/4 S28 BT]  
11" ALDER S52°W AT 15.3'  
BARK SCRIBED [1/4 S28 BT]  
STEEL FENCE POST  
EAST AT 2.0'

1/4 CORNER  
SET 3/4" PIPE  
WITH 2" BRASS CAP  
ON SOLID ROCK IN  
MOUND OF STONE  
NEW REFERENCES:  
20" FIR N8°E AT 87.70'  
SCRIBED [1/4 S27 BT]  
10" FIR S28°E AT 32.25'  
SCRIBED [1/4 S27 BT]  
29" FIR S38°W AT 52.70'  
SCRIBED [1/4 S28 BT]

1/4 CORNER  
SECTION 28 ONLY  
SET 3/4" PIPE  
WITH 2" BRASS CAP  
NEW REFERENCES:  
8" FIR S18°E AT 9.06'  
SCRIBED [1/4 S28 BT]  
9" FIR S76°E AT 2.55'  
SCRIBED [1/4 S28 BT]  
7" FIR N62°W AT 6.84'  
SCRIBED [1/4 S28 BT]  
STEEL FENCE POST  
NORTH AT 1.0'

CENTER 1/4 CORNER  
SET 3/4" PIPE  
WITH 2" BRASS CAP  
NEW REFERENCES:  
12" HEMLOCK N86°W AT 9.35'  
SCRIBED [C1/4 S28 BT]  
20" HEMLOCK NOTE AT 21.16'  
SCRIBED [C1/4 S28 BT]  
STEEL FENCE POST  
SOUTH AT 1.0'

CLARK COUNTY GPS CONTROL  
POINT C620, NAD83(91)  
SEE LAND CORNER RECORD  
BOOK 9 PAGE 89  
LAT: 45°43'18.88342"  
LONG: 122°16'10.21556"

NOTE: NEW REFERENCES HAVE AN 8" SPIKE AT BASE OF SCRIBE WITH LONGVIEW  
FIBRE COMPANY LOCATION TAG ABOVE SCRIBE. ALL ORIENTED TOWARD MONUMENT.  
DISTANCES MEASURED TO SPIKE. BEARINGS TO REFERENCES TAKEN WITH HAND  
COMPASS HAVING A DECLINATION OF 21° EAST.

GPS CONTROL POINT  
5/8" REBAR WITH  
RED PLASTIC CAP  
FIBRE CONTROL  
WASHINGTON STATE PLANE  
ZONE 2602  
E: 1241718.95  
N: 1392714.24

FEDERAL BASE NETWORK  
CONTROL STATION "P44"  
PID RC1785  
NAD83(91)  
LAT: 45°41'31.89530"  
LONG: 121°52'57.98051"



SCALE: 1 INCH = 5000 FEET

CLARK COUNTY GPS CONTROL  
POINT C620, NAD83(91)  
SEE LAND CORNER RECORD  
BOOK 9 PAGE 81  
LAT: 45°39'01.31199"  
LONG: 122°15'08.79260"

GPS CONTROL POINT  
5/8" REBAR WITH  
RED PLASTIC CAP  
FIBRE CONTROL  
WASHINGTON STATE PLANE  
ZONE 2602  
E: 1234798.86  
N: 131637.56

S 83°19'05" E - 45,646.41'  
N 87°27'07" E - 52,308.16'

N 69°18'16" E - 52,867.51'  
N 75°26'30" E - 43,947.08'

S 81°58'57" E - 53,758.89'  
S 71°34'17" E - 48,723.57'

AUDITOR'S CERTIFICATE

FILED FOR RECORD THIS 24<sup>th</sup> DAY OF July 2005  
AT 11:36 AM IN BOOK 22330 OF SURVEYS AT PAGE 2  
AT THE REQUEST OF LONGVIEW FIBRE COMPANY.

GEORGE J. FORD, PLS  
CERTIFICATE NO. 22330

SURVEYOR'S CERTIFICATE

THIS MAP CORRECTLY REPRESENTS A SURVEY MADE BY ME OR  
UNDER MY DIRECTION IN CONFORMANCE WITH THE REQUIREMENTS  
OF THE SURVEY RECORDING ACT AT THE REQUEST OF LONGVIEW  
FIBRE COMPANY IN JUNE 2001.

2006102463  
AUDITOR'S FILE NUMBER

J. Michael Garrison  
COUNTY AUDITOR by LONGVIEW FIBRE COMPANY  
COUNTY AUDITOR WA 98632

