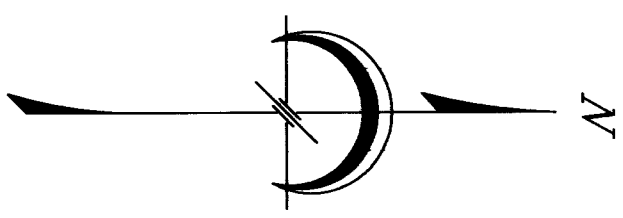


RECORD OF SURVEY
in Govt Lots 1 and 2 and the
NW1/4-NE1/4 of Section 26 in
Township 7 North, Range 6 East, W.M.
Skamania County, WA

FND 2 1/2" BRASS CAP 24 23
ROS 2004152896
SEARCHED FOR AND NOT FOUND
CALCULATED PER ROS AF2004152896
TIES AS NOTED



LEGEND

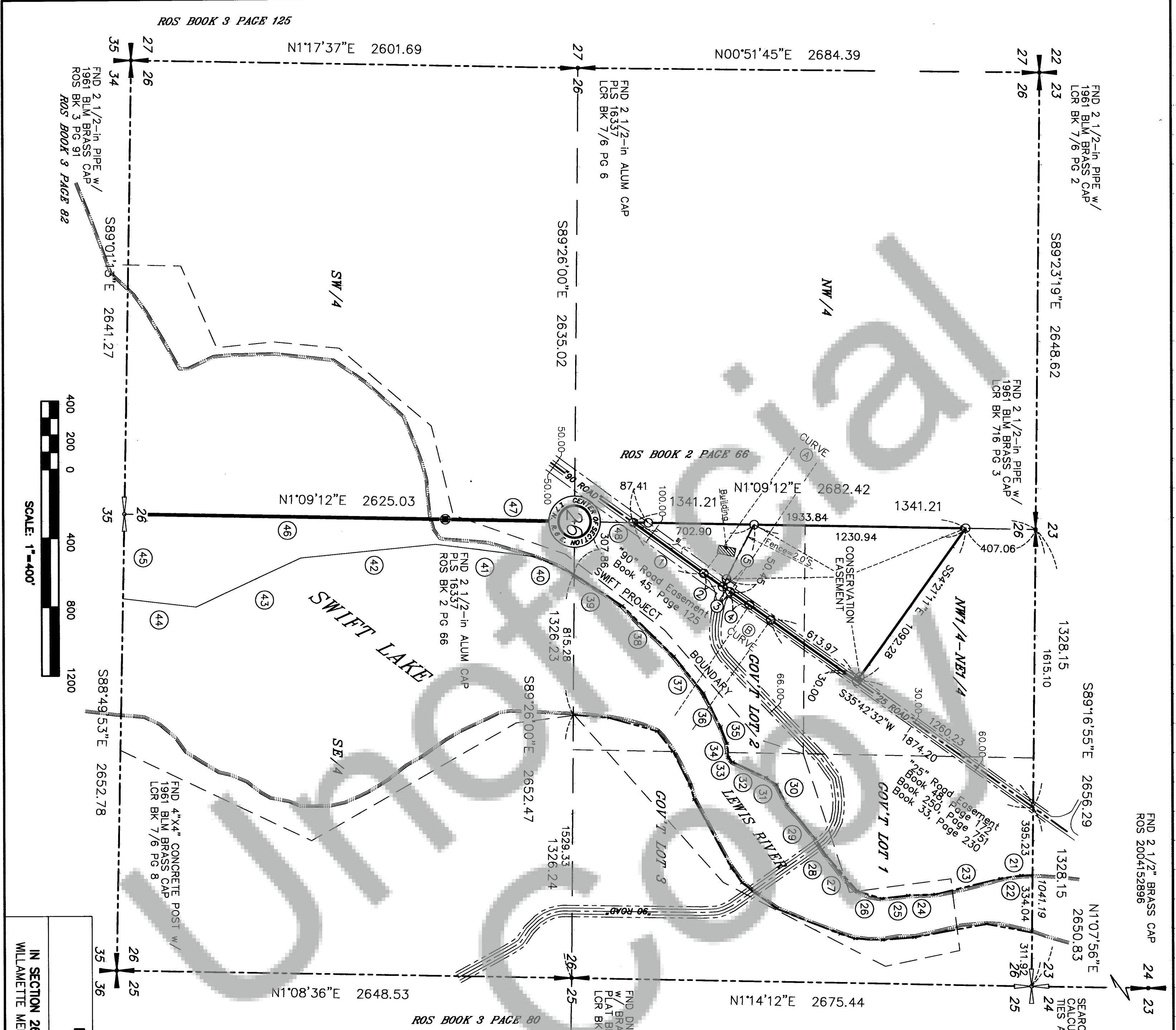
- 23 24
25 25
26 25
35 36
CALCULATED POSITION
- 26 25
35 36
FOUND MONUMENT AS DESCRIBED
- 26 25
35 36
FOUND MONUMENT AS DESCRIBED
- 26 25
35 36
SET 5/8-INCH BY 30-INCH STEEL
ROD WITH 2-INCH ALUMINUM CAP
STAMPED LS 28407



FINLEY ENGINEERING COMPANY, INC.
Twin Oaks Suite B-250
1800 NW 169th Place
BEAVERTON, OREGON 97006
Phone: (503) 466-9460 Fax: (503) 466-9979

PROPERTY OWNER:
PACIFICORP
825 NE MULTNOMAH, SUITE 1000
PORTLAND, OREGON 97232

RECORD OF SURVEY			
PACIFICORP			
DRAWN BY:	TLH	DATE:	5/08/06
CHECKED BY:	DCL		
APPROVED:	MRH		
SCALE:	1" = 400'	DATE:	N/A
DRAWING NO.:	SCHOOL PARCEL	REV. NO.:	3



ROS BOOK 3 PAGE 125

ROS BOOK 2 PAGE 66

ROS BOOK 3 PAGE 80

DATE OF SURVEY: MAY, 2005 TO APRIL, 2006

DATE OF CORNER RECOVERY: MAY, 2005

BASIS OF BEARINGS: WASHINGTON COORDINATE SYSTEM, SOUTH ZONE, NAD 83(1983). DISTANCES SHOWN ARE GROUND DISTANCES IN US SURVEY FEET.

METHOD OF SURVEY: THIS SURVEY WAS EXECUTED WITH A LEICA T-1103 TOTAL STATION USING FIELD SURVEY TRAVERSE METHODS AND TRIMBLE 5700 GPS RECEIVERS USING RTK FIELD SURVEY METHODS. GPS TIES WERE MADE TO "WOODAIR" AND "VALE". GPS OBSERVATIONS WERE MADE TO PRIMARY CONTROL POINTS. CORNERS SHOWN WERE EITHER DIRECTLY OBSERVED OR TIED WITH A CONVENTIONAL TRAVERSE ORIENTED TO THE ABOVE GPS POINTS WHICH MET THE REQUIREMENTS OF WAC 352-130-090.

PURPOSE OF SURVEY AND NARRATIVE:

THE PURPOSE OF THIS SURVEY IS TO CREATE A 20 ACRE PARCEL IN A PORTION OF GOV'T LOT 2 AND THE NW1/4-NE1/4 OF SECTION 26. (TAX LOT NO. 07-06-28-0-0-0100-00)

MONUMENTS WERE FOUND AND HELD AS SHOWN HEREON. THE CENTER OF SECTION WAS CALCULATED BY HOLDING THE EAST LINE OF THE NW QUARTER AS MONUMENTED IN ROS BOOK 2 PAGE 66 AND INTERSECTING A STRAIGHT LINE BETWEEN THE EAST AND WEST QUARTER CORNERS. THE SOUTH PROJECTION OF THE EAST LINE OF THE NW QUARTER FITS PETTIOHN'S SOUTH QUARTER POSITION VERY WELL.

THE NORTHEAST SECTION CORNER WAS SEARCHED FOR AND NOT FOUND. ITS POSITION WAS CALCULATED BY TIES TO MONUMENTS AT THE WEST QUARTER CORNER OF SECTION 23 AND THE EAST QUARTER CORNER OF SECTION 25 AS DESCRIBED IN ROS 2004152896.

REFERENCE SURVEYS

1. RECORD OF SURVEY FILED AS AF 2004152896 (Sec. 24)
2. RECORD OF SURVEY FILED IN BOOK 2 PAGE 66. (Sec 26)
3. RECORD OF SURVEY FILED IN BOOK 3 PAGE 125 (Sec 27)
4. RECORD OF SURVEY FILED IN BOOK 3 PAGE 82 (Sec 35)
5. RECORD OF SURVEY FILED IN BOOK 3 PAGE 80 (Sec 25)
6. PACIFICORP FERC PROJECT NO. 2111 WASHINGTON PROJECT AREA & PROJECT BOUNDARY DRAWING NO. PE13749, SHEET 9 OF 9, DATED JULY 16, 1976 (PETTIOHN)

CURVE TABLE

CURVE	A	LINE	BEARING	DISTANCE
DEG:	01°00'00"	1	S36°02'35"W	505.85
Radius:	5729.58	4	S34°11'31"W	137.32
Delta angle:	01°51'04"	5	N62°53'01"W	405.41
Arc length:	185.11			
Chord Direction:	S35°07'03"W			
Chord length:	185.105			

CURVE 2
Arc Length: 133.62
Chord Direction: N35°22'29.5"E
Chord Length: 133.62

CURVE 3
Arc Length: 51.485
Chord Direction: S35°26'57.5"W
Chord Length: 51.485

CURVE B
DEG: 01°00'00"
Radius: 5729.58
Delta angle: 01°31'01"
Tangent length: 75.85
Arc length: 151.69
Chord Direction: S34°57'01"W
Chord length: 151.685

20 ACRE SCHOOL PARCEL DESCRIPTION

A parcel of land in Government Lot 2 and the Northwest Quarter of the Northeast Quarter of Section 26 in Township 7 North, Range 6 East of the Willamette Meridian in Skamania County, Washington more particularly described as follows:

Beginning at the intersection of the centerline of US Forest Service Road 90 with the West line of said Government Lot 2, a point monumented by a 5/8-inch by 30-inch steel rod with a 2-inch aluminum cap stamped LS 28407 that bears S.01°09'12"W., 2340.90 feet from the North One-Quarter Corner of said Section 26, evidenced by a BLM Brass Capped Monument; thence along said West line N.01°09'12"E., 1933.84 feet to a 5/8-inch by 30-inch steel rod with a 2-inch aluminum cap stamped LS 28407; thence S.54°21'1"E., 1092.28 feet to a point in the centerline of US Forest Service Road 25 monumented by a 5/8-inch by 30-inch steel rod with a 2-inch aluminum cap stamped LS 28407; thence along said centerline S.35°42'32"W., 613.97 feet to a 5/8-inch by 30-inch steel rod with a 2-inch aluminum cap stamped LS 28407; thence continuing along said centerline along a curve concave to the southeast having a radius of 5729.58 feet and a chord of S.34°57'01"W., 151.685 feet, on arc distance of 151.69 feet to a 5/8-inch by 30-inch steel rod with a 2-inch aluminum cap stamped LS 28407; thence continuing along said centerline S.34°11'31"W., 137.32 feet to a 5/8-inch by 30-inch steel rod with a 2-inch aluminum cap stamped LS 28407; thence continuing along said centerline and along the centerline of US Forest Service Road 90 along a curve concave to the northwest, having a radius of 5729.58 feet and a chord of S.35°07'03"W., 185.10 feet, on arc distance of 185.11 feet to a 5/8-inch by 30-inch steel rod with a 2-inch aluminum cap stamped LS 28407; thence continuing along said centerline S.36°02'35"W., 505.85 feet to the point of beginning.

Containing 20.014 acres of which 1.361 acres lie within US Forest Service Roads 25 and 90.

The Basis of Bearings of this description is the Washington Coordinate System, South Zone, NAD83/98.

Conservation Easement

That portion of the previously described parcel described as follows:

Commencing at the intersection of the centerline of US Forest Service Road 90 with the West line of said Government Lot 2, a point monumented by a 5/8-inch by 30-inch steel rod with a 2-inch aluminum cap stamped LS 28407 that bears S.01°09'12"W., 2340.90 feet from the North One-Quarter Corner of said Section 26, evidenced by a BLM Brass Capped Monument; thence along said West line N.01°09'12"E., 702.90 feet to a 5/8-inch by 30-inch steel rod with a 2-inch aluminum cap stamped LS 28407 for a True Point of Beginning; thence continuing along said West line N.01°09'12"E., 1230.94 feet to a 5/8-inch by 30-inch steel rod with a 2-inch aluminum cap stamped LS 28407; thence S.54°21'1"E., 1092.28 feet to a point in the centerline of US Forest Service Road 25 monumented by a 5/8-inch by 30-inch steel rod with a 2-inch aluminum cap stamped LS 28407; thence along said centerline S.35°42'32"W., 613.97 feet to a 5/8-inch by 30-inch steel rod with a 2-inch aluminum cap stamped LS 28407; thence continuing along said centerline along a curve concave to the southeast having a radius of 5729.58 feet and a chord of S.34°57'01"W., 151.685 feet, on arc distance of 151.69 feet to a 5/8-inch by 30-inch steel rod with a 2-inch aluminum cap stamped LS 28407; thence continuing along said centerline S.34°11'31"W., 137.32 feet to a 5/8-inch by 30-inch steel rod with a 2-inch aluminum cap stamped LS 28407; thence continuing along said centerline and along the centerline of US Forest Service Road 90 along a curve concave to the northwest, having a radius of 5729.58 feet and a chord of S.35°26'57.5"W., 51.485 feet, on arc distance of 51.485 feet to a 5/8-inch by 30-inch steel rod with a 2-inch aluminum cap stamped LS 28407; thence N.62°53'01"W., 405.41 feet to the point of beginning.

Containing 17.063 acres of which 0.692 acres lie within US Forest Service Roads 25 and 90 which rights-of-way are not subject to said easement.

The Basis of Bearings of this description is the Washington Coordinate System, South Zone, NAD83/98.

20 ACRE SCHOOL PARCEL

GROSS ACREAGE - 20.014 Acres
ACRES WITHIN ROADS "90" AND "25" - 1.361 Acres
NET ACREAGE - 18.653 Acres
REMAINDER IN LOTS 1 & 2 AND THE NW1/4-NE1/4: 90.15 Acres
GROSS ACREAGE -

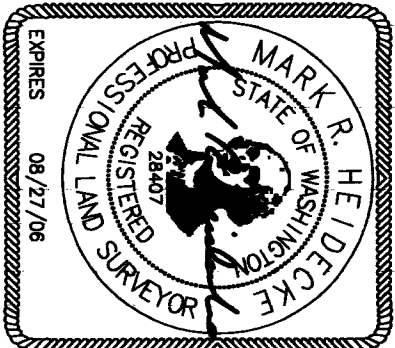
WEST BANK MEANDERS

BEARING	DISTANCE
21 - S01°28'13"E	65.31
22 - S08°08'17"E	123.14
23 - S13°25'31"E	387.91
24 - S02°05'05"E	159.74
25 - S06°27'55"E	154.81
26 - S17°02'12"W	148.74
27 - S49°02'17"W	274.23
28 - S57°07'16"W	117.62
29 - S50°28'07"W	259.91
30 - S62°52'25"W	127.31
31 - S35°33'54"W	74.93
32 - S24°51'04"W	214.30
33 - S48°23'42"W	34.97
34 - S83°53'26"W	81.81
35 - S68°31'05"W	103.03
36 - S63°27'29"W	220.83
37 - S51°27'46"W	274.85
38 - S44°36'10"W	419.40
39 - S33°03'05"W	332.71
40 - S25°17'52"W	241.53
41 - S07°11'17"W	592.53
42 - S05°33'43"E	790.04
43 - S24°48'43"E	671.53
44 - S06°41'17"W	427.94
45 - N88°49'53"W	493.50
46 - N01°09'12"E	1867.54
47 - N01°09'12"E	753.55
48 - N01°09'12"E	341.53

SURVEYOR'S CERTIFICATE

THIS MAP CORRECTLY REPRESENTS A SURVEY MADE BY ME OR UNDER MY DIRECTION IN CONFORMANCE WITH THE REQUIREMENTS OF THE SURVEY RECORDING ACT AT THE REQUEST OF PACIFICORP.

DATED MAY 8, 2006
Mark R. Heidecke
Mark R. Heidecke
Registered Land Surveyor L.S. No. 28407



AUDITOR'S CERTIFICATE

STATE OF WASHINGTON
COUNTY OF SKAMANIA

I HEREBY CERTIFY THAT THE WITHIN INSTRUMENT OF WRITING FILED BY
Mark Heidecke OF *Finley Engineering* 3:36 PM
ON *May 17*, 2006.

WAS RECORDED IN AUDITOR'S FILE NUMBER *2006161630*

RECORDED BY *Deaugh Stacey*
RECORDER OF SKAMANIA COUNTY WASHINGTON
COUNTY AUDITOR *Michael Harrison by Stacey*



FINLEY ENGINEERING COMPANY, INC.
Twin Oaks Suite B-250
1800 NW 169th Place
BEAVERTON, OREGON 97006
Phone: (503) 466-9460 Fax: (503) 466-9979

RECORD OF SURVEY		DRAWN BY: TJH	DATE: 5/08/06
PACIFICORP		CHECKED BY: DJL	
IN SECTION 26, TOWNSHIP 7 NORTH, RANGE 6 EAST, WILLAMETTE MERIDIAN, SKAMANIA COUNTY, WASHINGTON		APPROVED: MRH	
		SCALE: 1" = 400' N/A	
		DRAWING NO.: SCHOOL PARCEL	REV. NO. 3