

RECORD OF SURVEY

SKAMANIA COUNTY, WASHINGTON
IN
NE1/4 SECTION 20, T. 02 N., R. 07 E., WM
NW1/4 SECTION 21, T. 02 N., R. 07 E., WM

NARRATIVE:

- A. FIELD WORK WAS PERFORMED FEBRUARY 21 THROUGH 23, 2006.
- B. TEMPORARY WOODEN HUBS WERE ESTABLISHED ON A 4-FOOT OFFSET FROM THE EXISTING FENCELINE ENCLOSURE SURROUNDING THE SKAMANIA COUNTY PUD TRANSFORMER SITE.
- C. FROM THESE OFFSET LINES, MONUMENTS WERE ESTABLISHED AT POINTS OF INTERSECTION AT THE FOUR CORNERS OF THE SITE.
- D. A CONTROL TRAVERSE WAS RUN THAT WOULD ALLOW DOUBLE TIES TO FOUND MONUMENTATION. (MULTIPLE POINTINGS FROM EITHER DIFFERENT BACKSIGHTS OR FORESIGHTS). IF SAID MONUMENTS WERE NOT INCLUDED IN THE CONTROL NETWORK, AS WELL AS MEET OBSERVATION REDUNDANCIES THAT WOULD PRODUCE STATISTICALLY ROBUST POSITIONAL RELIABILITY.
- E. SET MONUMENTS CONSISTED OF 5/8-INCH IRON REBAR, 30-INCHES LONG, DRIVEN FLUSH WITH THE SURFACE OF THE GROUND WITH A 1-1/2-INCH DEIA YELLOW PLASTIC CAP AFFIXED THERETO. AT THE FOUR CORNERS OF THE PROPOSED DISPOSAL SITE, EACH MONUMENT WAS TIED THROUGH A RIGOROUSLY CONSTRAINED NETWORK SURVEY TO VERIFY DIMENSIONS. THE HORIZONTAL OBSERVATIONS WERE ADJUSTED USING LEAST SQUARES. THE HORIZONTAL ACCURACY CLASSIFICATION FOR THESE MONUMENTS WAS 2-CENTIMETERS (0.066 FEET) AT THE 95% CONFIDENCE LEVEL. AT THE TIME OF MEASUREMENT.
- F. THE RIGHT-OF-WAY BOUNDARIES FOR CASCADE DRIVE WERE DERIVED FROM THE STATE AND FOUND MONUMENT PLATS FOR THE HAGEDORN, BONNEVILLE, SECOND ADDITION, AND THE BONNEVILLE NORTH BONNEVILLE, RECORDED AUGUST 17, 1999 IN BOOK "B" OF PLATS AT PAGE 74 (AUDITOR'S FILE NO. 117032), SKAMANIA COUNTY DEED RECORDS. OUR MEASUREMENTS FIT WELL WITH THE SURVEY RECORD.
- G. PLANNIMETRIC DATA SHOWN ON THIS SURVEY WAS POSITIONED USING SINGLE-PINNING RADIAL TIES TO EXISTING FEATURES FROM THE AFORE-MENTIONED CONTROL NETWORK WITH CHECK SHOTS INTO EXISTING CONTROLS. THE HORIZONTAL ACCURACY CLASSIFICATION FOR THESE OBSERVATIONS WAS 5-CENTIMETERS (0.16 FEET) AT THE 95% CONFIDENCE LEVEL. AT THE TIME OF MEASUREMENT.

CURVE DATA				
CURVE NO.	DELTA	RADIUS	LENGTH	DELTA
1	1239.46°	650.00'	147.44'	(1239.28°)*
2	0632.49°	2,895.00'	330.80'	(0632.49°)
3	0316.45°	2,900.00'	165.96'	(0316.41°)
4	0949.34°	2,835.11'	486.22'	(0949.30°)

CURVE DATA				
CURVE NO.	DELTA	RADIUS	LENGTH	DELTA
5	1239.46°	650.00'	147.44'	(1239.28°)*
6	0632.49°	2,895.00'	330.80'	(0632.49°)
7	0316.45°	2,900.00'	165.96'	(0316.41°)
8	0949.34°	2,835.11'	486.22'	(0949.30°)

CURVE DATA				
CURVE NO.	DELTA	RADIUS	LENGTH	DELTA
9	1239.46°	650.00'	147.44'	(1239.28°)*
10	0632.49°	2,895.00'	330.80'	(0632.49°)
11	0316.45°	2,900.00'	165.96'	(0316.41°)
12	0949.34°	2,835.11'	486.22'	(0949.30°)

CURVE DATA				
CURVE NO.	DELTA	RADIUS	LENGTH	DELTA
13	1239.46°	650.00'	147.44'	(1239.28°)*
14	0632.49°	2,895.00'	330.80'	(0632.49°)
15	0316.45°	2,900.00'	165.96'	(0316.41°)
16	0949.34°	2,835.11'	486.22'	(0949.30°)

CURVE DATA				
CURVE NO.	DELTA	RADIUS	LENGTH	DELTA
17	1239.46°	650.00'	147.44'	(1239.28°)*
18	0632.49°	2,895.00'	330.80'	(0632.49°)
19	0316.45°	2,900.00'	165.96'	(0316.41°)
20	0949.34°	2,835.11'	486.22'	(0949.30°)

CURVE DATA				
CURVE NO.	DELTA	RADIUS	LENGTH	DELTA
21	1239.46°	650.00'	147.44'	(1239.28°)*
22	0632.49°	2,895.00'	330.80'	(0632.49°)
23	0316.45°	2,900.00'	165.96'	(0316.41°)
24	0949.34°	2,835.11'	486.22'	(0949.30°)

CURVE DATA				
CURVE NO.	DELTA	RADIUS	LENGTH	DELTA
25	1239.46°	650.00'	147.44'	(1239.28°)*
26	0632.49°	2,895.00'	330.80'	(0632.49°)
27	0316.45°	2,900.00'	165.96'	(0316.41°)
28	0949.34°	2,835.11'	486.22'	(0949.30°)

CURVE DATA				
CURVE NO.	DELTA	RADIUS	LENGTH	DELTA
29	1239.46°	650.00'	147.44'	(1239.28°)*
30	0632.49°	2,895.00'	330.80'	(0632.49°)
31	0316.45°	2,900.00'	165.96'	(0316.41°)
32	0949.34°	2,835.11'	486.22'	(0949.30°)

CURVE DATA				
CURVE NO.	DELTA	RADIUS	LENGTH	DELTA
33	1239.46°	650.00'	147.44'	(1239.28°)*
34	0632.49°	2,895.00'	330.80'	(0632.49°)
35	0316.45°	2,900.00'	165.96'	(0316.41°)
36	0949.34°	2,835.11'	486.22'	(0949.30°)

CURVE DATA				
CURVE NO.	DELTA	RADIUS	LENGTH	DELTA
37	1239.46°	650.00'	147.44'	(1239.28°)*
38	0632.49°	2,895.00'	330.80'	(0632.49°)
39	0316.45°	2,900.00'	165.96'	(0316.41°)
40	0949.34°	2,835.11'	486.22'	(0949.30°)

CURVE DATA				
CURVE NO.	DELTA	RADIUS	LENGTH	DELTA
41	1239.46°	650.00'	147.44'	(1239.28°)*
42	0632.49°	2,895.00'	330.80'	(0632.49°)
43	0316.45°	2,900.00'	165.96'	(0316.41°)
44	0949.34°	2,835.11'	486.22'	(0949.30°)

CURVE DATA				
CURVE NO.	DELTA	RADIUS	LENGTH	DELTA
45	1239.46°	650.00'	147.44'	(1239.28°)*
46	0632.49°	2,895.00'	330.80'	(0632.49°)
47	0316.45°	2,900.00'	165.96'	(0316.41°)
48	0949.34°	2,835.11'	486.22'	(0949.30°)

CURVE DATA				
CURVE NO.	DELTA	RADIUS	LENGTH	DELTA
49	1239.46°	650.00'	147.44'	(1239.28°)*
50	0632.49°	2,895.00'	330.80'	(0632.49°)
51	0316.45°	2,900.00'	165.96'	(0316.41°)
52	0949.34°	2,835.11'	486.22'	(0949.30°)

CURVE DATA				
CURVE NO.	DELTA	RADIUS	LENGTH	DELTA
53	1239.46°	650.00'	147.44'	(1239.28°)*
54	0632.49°	2,895.00'	330.80'	(0632.49°)
55	0316.45°	2,900.00'	165.96'	(0316.41°)
56	0949.34°	2,835.11'	486.22'	(0949.30°)

CURVE DATA				
CURVE NO.	DELTA	RADIUS	LENGTH	DELTA
57	1239.46°	650.00'	147.44'	(1239.28°)*
58	0632.49°	2,895.00'	330.80'	(0632.49°)
59	0316.45°	2,900.00'	165.96'	(0316.41°)
60	0949.34°	2,835.11'	486.22'	(0949.30°)

CURVE DATA				
CURVE NO.	DELTA	RADIUS	LENGTH	DELTA
61	1239.46°	650.00'	147.44'	(1239.28°)*
62	0632.49°	2,895.00'	330.80'	(0632.49°)
63	0316.45°	2,900.00'	165.96'	(0316.41°)
64	0949.34°	2,835.11'	486.22'	(0949.30°)

CURVE DATA				
CURVE NO.	DELTA	RADIUS	LENGTH	DELTA
65	1239.46°	650.00'	147.44'	(1239.28°)*
66	0632.49°	2,895.00'	330.80'	(0632.49°)
67	0316.45°	2,900.00'	165.96'	(0316.41°)
68	0949.34°	2,835.11'	486.22'	(0949.30°)

CURVE DATA				
CURVE NO.	DELTA	RADIUS	LENGTH	DELTA
69	1239.46°	650.00'	147.44'	(1239.28°)*
70	0632.49°	2,895.00'	330.80'	(0632.49°)
71	0316.45°	2,900.00'	165.96'	(0316.41°)
72	0949.34°	2,835.11'	486.22'	(0949.30°)

CURVE DATA				
CURVE NO.	DELTA	RADIUS	LENGTH	DELTA
73	1239.46°	650.00'	147.44'	(1239.28°)*
74	0632.49°	2,895.00'	330.80'	(0632.49°)
75	0316.45°	2,900.00'	165.96'	(0316.41°)
76	0949.34°	2,835.11'	486.22'	(0949.30°)

CURVE DATA				
CURVE NO.	DELTA	RADIUS	LENGTH	DELTA
77	1239.46°	650.00'	147.44'	(1239.28°)*
78	0632.49°	2,895.00'	330.80'	(0632.49°)
79	0316.45°	2,900.00'	165.96'	(0316.41°)
80	0949.34°	2,835.11'	486.22'	(0949.30°)

CURVE DATA				
CURVE NO.	DELTA	RADIUS	LENGTH	DELTA
81	1239.46°	650.00'	147.44'	(1239.28°)*
82	0632.49°	2,895.00'	330.80'	(0632.49°)
83	0316.45°	2,900.00'	165.96'	(0316.41°)
84	0949.34°	2,835.11'	486.22'	(0949.30°)

CURVE DATA				
CURVE NO.	DELTA	RADIUS	LENGTH	DELTA
85	1239.46°	650.00'	147.44'	(1239.28°)*
86	0632.49°	2,895.00'	330.80'	(0632.49°)
87	0316.45°	2,900.00'	165.96'	(0316.41°)
88	0949.34°	2,835.11'	486.22'	(0949.30°)

CURVE DATA				
CURVE NO.	DELTA	RADIUS	LENGTH	DELTA
89	1239.46°	650.00'	147.44'	(1239.28°)*
90	0632.49°	2,895.00'	330.80'	(0632.49°)
91	0316.45°	2,900.00'	165.96'	(0316.41°)
92	0949.34°	2,835.11'	486.22'	(0949.30°)

CURVE DATA				
CURVE NO.	DELTA	RADIUS	LENGTH	DELTA
93	1239.46°	650.00'	147.44'	(1239.28°)*
94	0632.49°	2,895.00'	330.80'	(0632.49°)
95	0316.45°	2,900.00'	165.96'	(0316.41°)
96	0949.34°	2,835.11'	486.22'	(0949.30°)

CURVE DATA				
CURVE NO.	DELTA	RADIUS	LENGTH	DELTA
97	1239.46°	650.00'	147.44'	(1239.28°)*
98	0632.49°	2,895.00'	330.80'	(0632.49°)
99	0316.45°	2,900.00'	165.96'	(0316.41°)
100	0949.34°	2,835.11'	486.22'	(0949.30°)

CURVE DATA				
CURVE NO.	DELTA	RADIUS	LENGTH	DELTA
101	1239.46°	650.00'	147.44'	(1239.28°)*
102	0632.49°	2,895.00'	330.80'	(0632.49°)
103	0316.45°	2,900.00'	165.96'	(0316.41°)
104	0949.34°	2,835.11'	486.22'	(0949.30°)

CURVE DATA				
CURVE NO.	DELTA	RADIUS	LENGTH	DELTA
105	1239.46°	650.00'	147.44'	(1239.28°)*
106	0632.49°	2,895.00'	330.80'	(0632.49°)
107	0316.45°	2,900.00'	165.96'	(0316.41°)
108	0949.34°	2,835.11'	486.22'	(0949.30°)

CURVE DATA				
CURVE NO.	DELTA	RADIUS	LENGTH	DELTA
109	1239.46°	650.00'	147.44'	(1239.28°)*
110	0632.49°	2,895.00'	330.80'	(0632.49°)
111	0316.45°	2,900.00'	165.96'	(0316.41°)
112	0949.34°	2,835.11'	486.22'	(0949.30°)

CURVE DATA				
CURVE NO.	DELTA	RADIUS	LENGTH	DELTA
113	1239.46°	650.00'	147.44'	(1239.28°)*
114	0632.49°	2,895.00'	330.80'	(0632.49°)
115	0316.45°	2,900.00'	165.96'	(0316.41°)
116	0949.34°	2,835.11'	486.22'	(0949.30°)

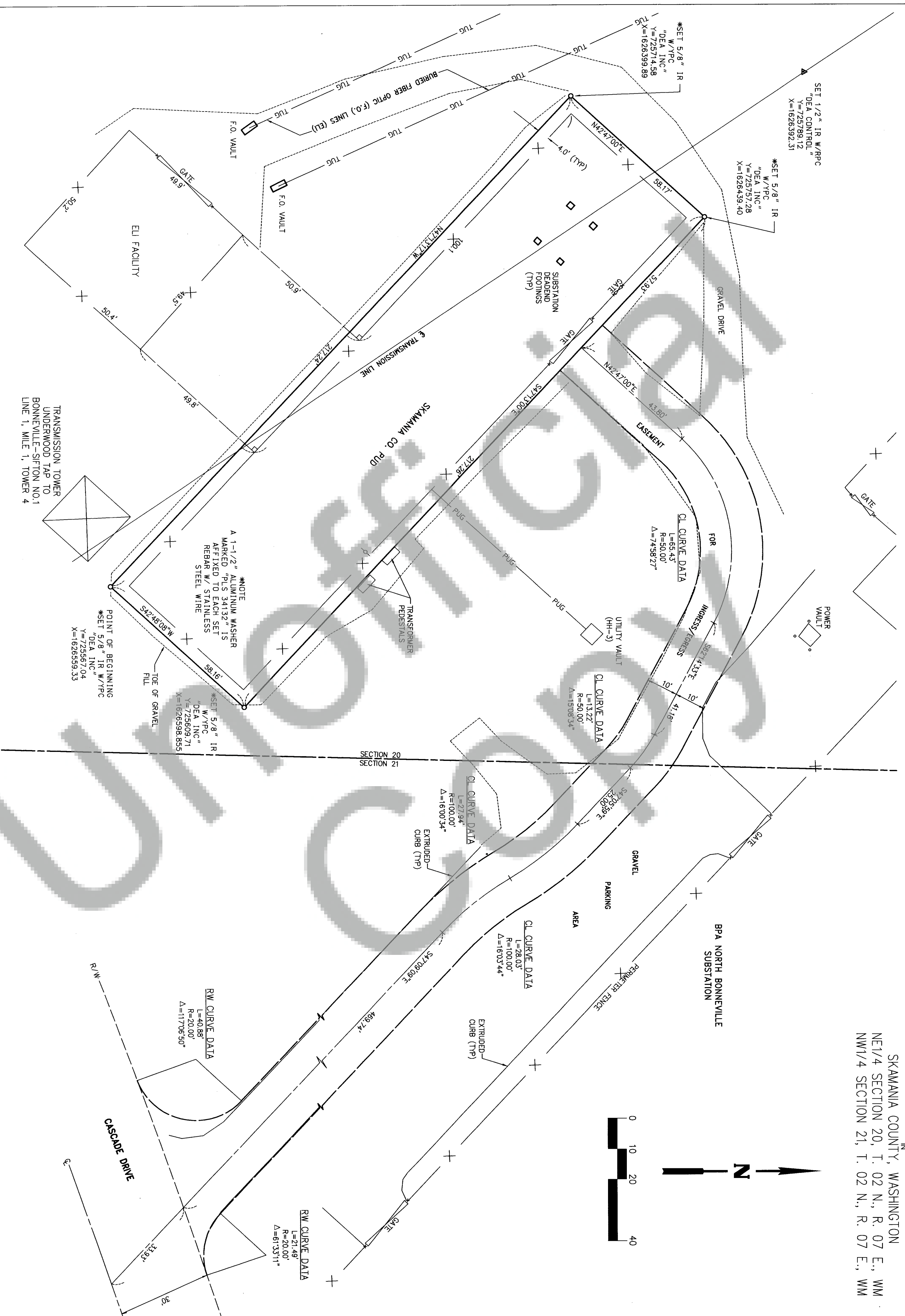
CURVE DATA				
CURVE NO.	DELTA	RADIUS	LENGTH	DELTA
117	1239.46°	650.00'	147.44'	(1239.28°)*
118	0632.49°	2,895.00'	330.80'	(0632.49°)
119	0316.45°	2,900.00'	165.96'	(0316.41°)
120	0949.34°	2,835.11'	486.22'	(0949.30°)

CURVE DATA				
CURVE NO.	DELTA	RADIUS	LENGTH	DELTA
121	1239.46°	650.00'	147.44'	(1239.28°)*
122	0632.49°	2,895.00'	330.80'	(0632.49°)
123	0316.45°	2,900.00'	165.96'	(0316.41°)
124	0949.34°	2,835.11'	486.22'	(0949.30°)

CURVE DATA				
RADIUS	LENGTH	DELTA	RADIUS	LENGTH
650.00'	147.44'	(Δ=159.28°)	(650.00')	(147.38)
2,895.00'	330.80'	(Δ=06.32.49")	(2,895.00')	(330.80)
2,900.00'	165.96'	(Δ=03.16.41")	(2,900.00')	(165.91')
2,835.11'	486.22'	(Δ=09.49.30")	(2,835.00')	(486.14')

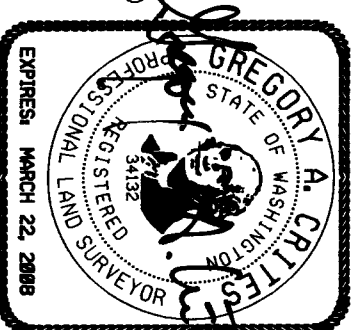
RECORD OF SURVEY

SKAMANIA COUNTY, WASHINGTON
NE1/4 SECTION 20, T. 02 N., R. 07 E., WM
NW1/4 SECTION 21, T. 02 N., R. 07 E., WM



SURVEYOR'S CERTIFICATE

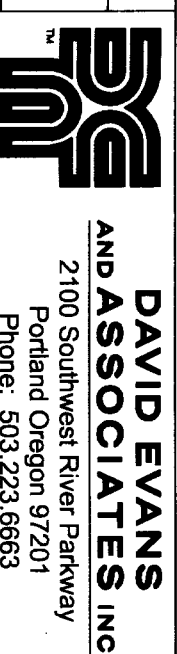
I, GREGORY A. CRITES, A LICENSED LAND SURVEYOR IN THE STATE OF WASHINGTON, HEREBY CERTIFY THAT THIS MAP CORRECTLY REPRESENTS AN ACTUAL FIELD SURVEY CONDUCTED BY ME OR UNDER MY DIRECTION, DURING THE MONTH OF FEBRUARY, 2006, IN CONFORMANCE WITH THE SURVEY RECORDING ACT, AND THAT THE MONUMENTS HAVE BEEN STAKED ON THE GROUND AS SHOWN HEREON. THIS SURVEY WAS PERFORMED AT THE REQUEST OF THE BONNEVILLE POWER ADMINISTRATION.



SURVEY FOR



1/4	SEC	T.	R.
NE	20	2N	7E
NW	21	2N	7E



BPAX0333_ROS.DGN	
DATE: MAR. 17, 2006	SHT 2 OF 2

AUDITOR'S CERTIFICATE

FILED FOR RECORD THIS 4th DAY OF
APRIL, 2006 AT 33 MINUTES PAST 12,
P. M. AND RECORDED IN BOOK _____
OF SURVEYS, PAGE _____, AT THE REQUEST OF
GREGORY A. CRITES, P.L.S.,
Michael Hansen 2006161079
SKANAWA COUNTY AUDITOR INDEX NO.
Stacy
DEPUTY COUNTY AUDITOR FEE NO. _____