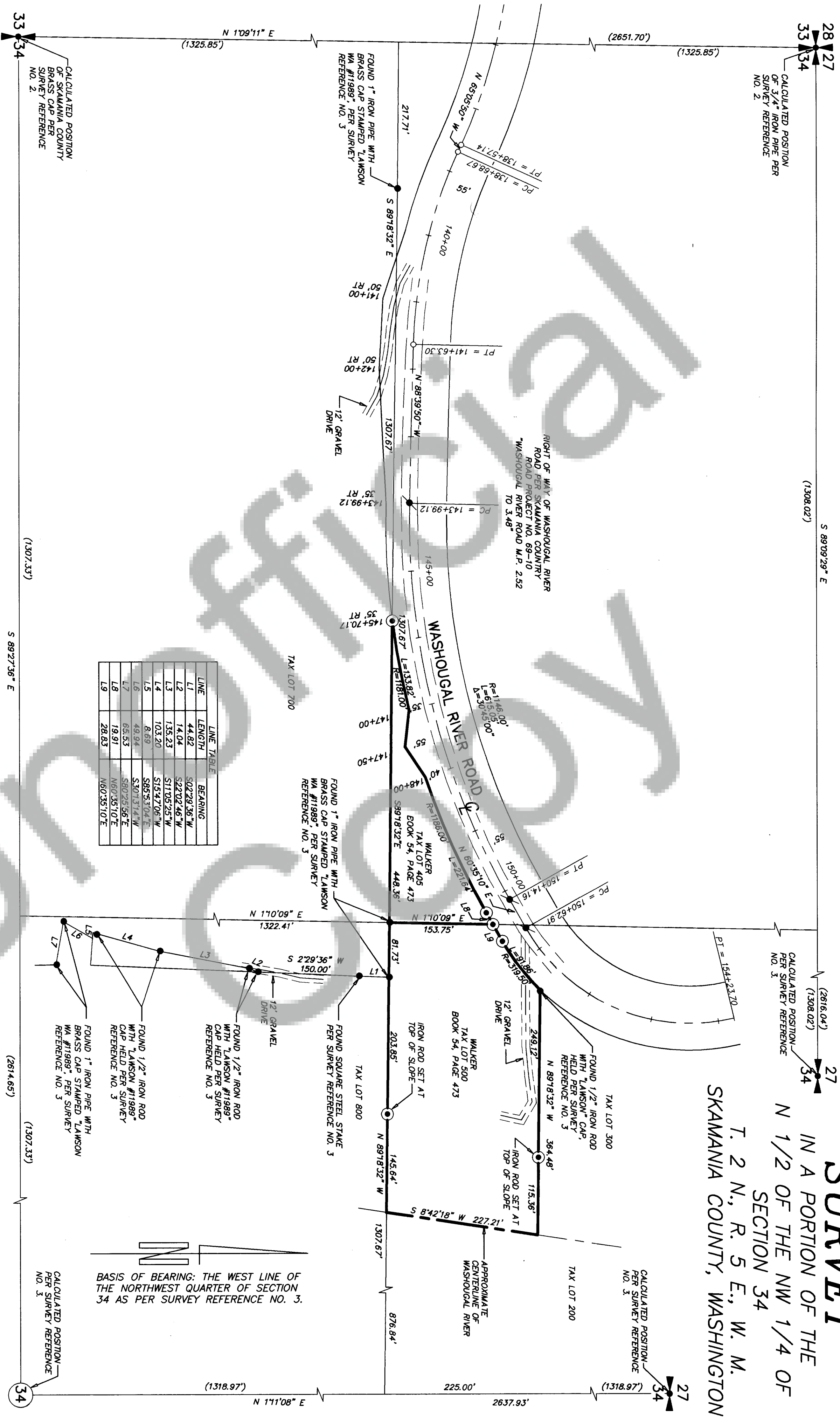


2006160353

SURVEY

IN A PORTION OF THE
N 1/2 OF THE NW 1/4 OF
SECTION 34
T. 2 N., R. 5 E., W. M.
SKAMANIA COUNTY, WASHINGTON



LINE	LENGTH	BEARING
L1	44.82	S02°29'36\"
L2	14.04	S22°02'46\"
L3	135.23	S11°05'25\"
L4	103.20	S15°47'06\"
L5	8.69	S86°57'04\"
L6	49.94	S30°13'14\"
L7	65.53	S80°25'56\"
L8	19.91	N60°35'10\"
L9	28.83	N60°35'10\"

SURVEYOR'S CERTIFICATE

THIS MAP CORRECTLY REPRESENTS A SURVEY MADE BY ME OR UNDER MY DIRECTION
IN CONFORMANCE WITH THE REQUIREMENTS OF THE SURVEY RECORDING ACT AT THE
REQUEST OF PATRICK CONNOLLY IN NOVEMBER, 2005.

Kyle P. Feeder 1-25-06
KYLE P. FEEDER, PROFESSIONAL LAND SURVEYOR,
LS #41032

SCALE: 1"=100'

JOB NO. 05-650

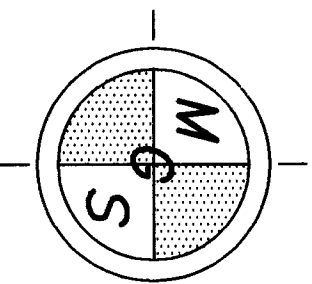
DATE: 01/24/06

CALC BY: KPE

DRAWN BY: KPE

CHECKED BY: DAR

SHEET 1 OF 1



MINISTER-GLAESER
SURVEYING INC.
2200 E. EVERGREEN BLVD.
VANCOUVER, WA 98661
(360) 694-3313

AUDITOR'S CERTIFICATE

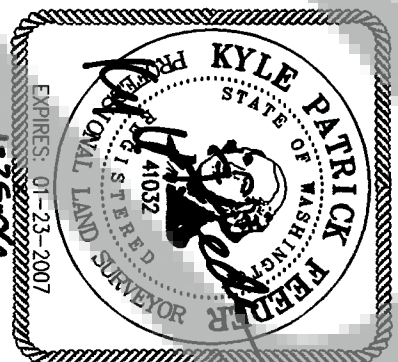
FILED FOR RECORD THIS 26th DAY OF January 2006 AT

4:28 P.M. IN BOOK 2 OF SURVEYS AT PAGE 473
AT THE REQUEST OF MINISTER AND GLAESER SURVEYING, INC.
AF# 2006160353

Kyle P. Feeder
SKAMANIA COUNTY AUDITOR

LEGEND:

- INDICATES MONUMENT FOUND AS NOTED
- INDICATES 2" IRON PIPE WITH PIN FOUND
IN CONCRETE IN CASE AND COVER, HELD
PER SKAMANIA C.R.P. 69-10
- INDICATES 1/2" x 24" IRON ROD WITH
(FEEDER 41032) CAP SET
- () INDICATES RECORD DISTANCE



MINISTER-GLAESER
SURVEYING INC.
2200 E. EVERGREEN BLVD.
VANCOUVER, WA 98661
(360) 694-3313