

SAUER SHORT PLATT

WE OWNERS OF THE ABOVE TRACT OF LAND, HEREBY DECLARE AND CERTIFY THIS SHORT PLOT TO BE TRUE AND CORRECT TO THE BEST OF OUR ABILITIES AND THAT THIS SHORT SUBMISSION HAS BEEN MADE WITH OUR FREE CONSENT AND IN ACCORDANCE WITH OUR DESIRES. FURTHER, WE DEDICATE ALL ROAD AS SHOWN, NOT NOTED AS PRIVATE, AND WAIVE ALL CLAIMS FOR DAMAGES AGAINST ANY GOVERNMENTAL AGENCY ARISING FROM THE CONSTRUCTION AND MAINTENANCE OF SAID ROADS. FURTHERMORE, WE GRANT ALL EASEMENTS SHOWN FOR THEIR DESIGNATED PURPOSES.

A circular notary seal for Teri L. Williams, a Notary Public in the State of Washington. The seal features the text "TERI L. WILLIAMS" at the top, "NOTARY PUBLIC" in the center, and "COMMISSION EXPIRES SEPTEMBER 1, 2006" at the bottom. The outer ring of the seal contains the text "STATE OF WASHINGTON".

WATER SUPPLY METHODS AND SANITARY SEWER DISPOSAL/ON-SITE SEWAGE DISPOSAL SYSTEMS CONTEMPLATED FOR USE IN THIS SHORT SUBDIVISION CONFORM WITH CURRENT STANDARDS.

1. Top Engineer, COUNTY ENGINEER OF SKAMANIA COUNTY, WASH., CERTIFY THAT THIS PLAN MEETS CURRENT SKAMANIA COUNTY REQUIREMENTS. CERTIFY THAT APPROVED AND OF ENGINEER DEVELOPMENT WITHIN THE COUNTY OF SKAMANIA COUNTY MEETS THE CONSTRUCTION OF ANY STRUCTURES REQUIRED FOR AND PRIOR TO FINAL APPROVAL, MEETS STANDARD ENGINEERING SPECIFICATIONS. APPROVE THE LAYOUT OF ROADS AND EASEMENTS: AND, APPROVE THE ROAD NAME(S) AND NUMBER(S) OF SUCH ROAD(S).

100
12/29/05
DATE

COUNTY ENGINEER

THE LAYOUT OF THIS SHORT SUBDIVISION COMPLIES WITH ORDINANCE 1980-07 REQUIREMENTS, AND THE SHORT PLAT IS APPROVED SUBJECT TO RECORDING IN THE SKAGAMAWA COUNTY AUDITOR'S OFFICE.

SURVEYOR'S CERTIFICATE

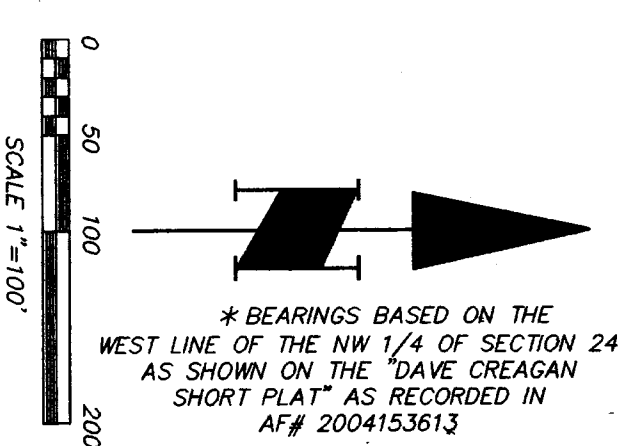
[Signature]

I HEREBY CERTIFY THAT THE WITHIN INSTRUMENT OF WRITING FILED BY
Karen W. Thompson OR Planning AT 4:10 P.M.
ON 12/30 20 05
WAS RECORDED UNDER AUDITOR'S FILE NUMBER 22005160078

HAGEDORN, INC.

| | | |
|-----------------|-----------------|---------------|
| SCALE: 1"=500' | CALC. BY: CEW | DWG# 04-074SP |
| DATE: 12-28-05 | DRAWN BY: CC | PAGE 1 OF 2 |
| JOB NO.: 04-074 | CHECKED BY: BPT | |

in the E 1/2 SW 1/4
and the W 1/2 SE 1/4 of
SECTION 24, T7N, R6E, W.M.
SKAMANIA COUNTY, WA.



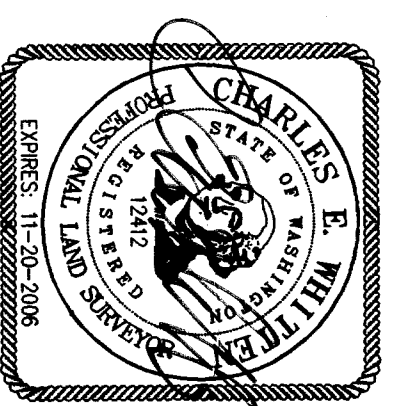
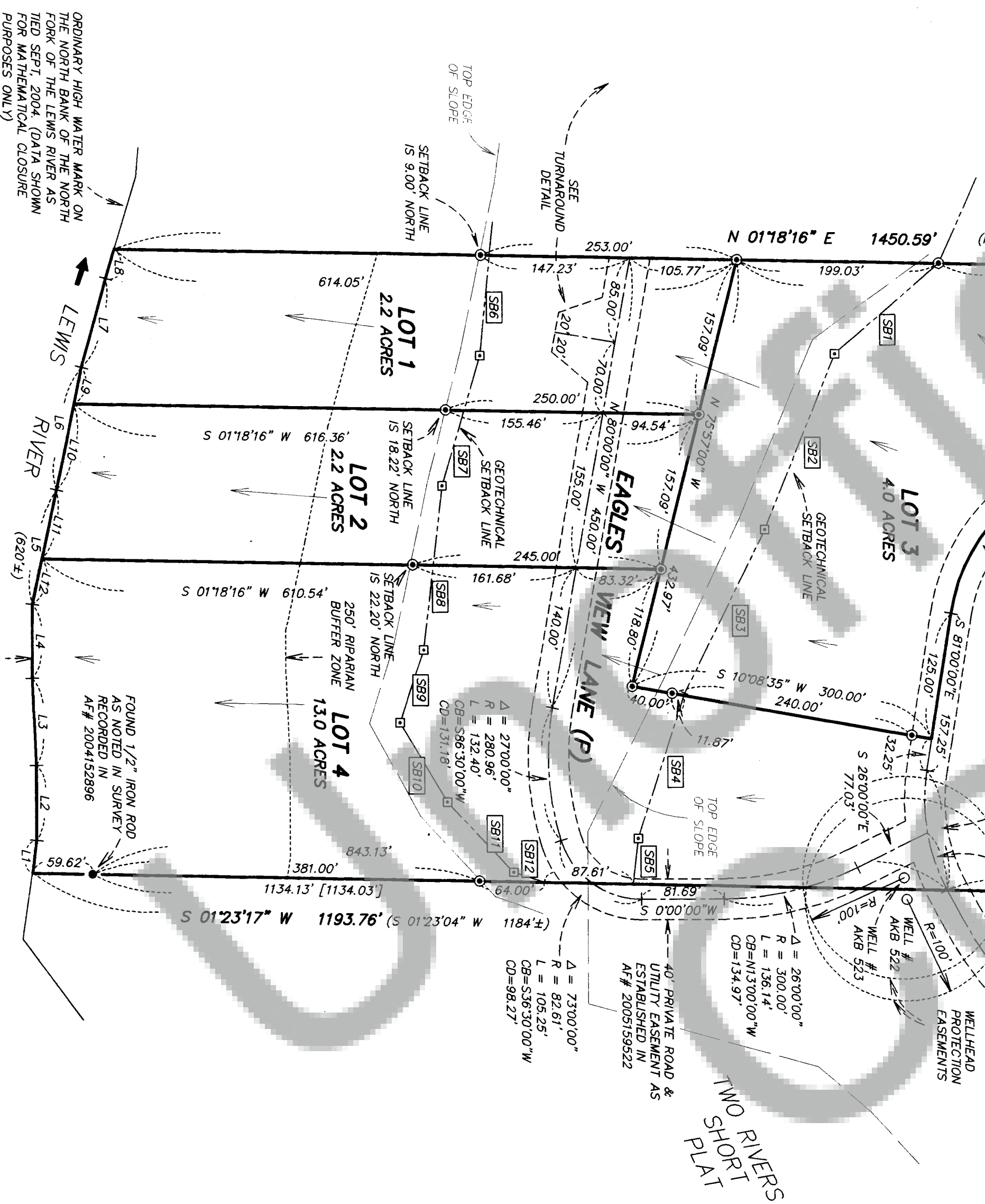
* BEARINGS BASED ON THE
WEST LINE OF THE NW 1/4 OF SECTION 24
AS SHOWN ON THE "DAVE CREAGAN
SHORT PLAT" AS RECORDED IN
AF# 2004153613



TURNAROUND DETAIL
NOT TO SCALE

| SETBACK TABLE | | |
|---------------|------------|----------|
| LINE | BEARING | DISTANCE |
| SB1 | S 40°57' E | 136.0' |
| SB2 | S 67°56' E | 186.0' |
| SB3 | S 63°40' E | 168.0' |
| SB4 | S 72°00' E | 150.0' |
| SB5 | S 83°24' E | 45.3' |
| | | |
| SB6 | N 84°11' W | 99.8' |
| SB7 | S 73°29' E | 133.4' |
| SB8 | S 83°23' E | 162.6' |
| SB9 | S 77°32' E | 75.1' |
| SB10 | N 59°27' E | 91.7' |
| SB11 | N 48°55' E | 95.3' |
| SB12 | N 18°22' E | 31.8' |

| LINE | LINE TABLE | |
|------|---------------|----------|
| | BEARING | DISTANCE |
| L1 | N 81.40'00" W | 32.82' |
| L2 | N 90.00'00" W | 74.00' |
| L3 | S 87.30'00" W | 66.00' |
| L4 | N 89.50'00" W | 73.00' |
| L5 | N 77.40'00" W | 115.00' |
| | | |
| L6 | N 78.20'00" W | 123.00' |
| L7 | N 74.30'00" W | 91.00' |
| L8 | N 73.01'00" W | 30.02' |
| L9 | N 78.20'00" W | 36.62' |
| L10 | N 78.20'00" W | 66.38' |
| L11 | N 77.40'00" W | 69.53' |
| L12 | N 77.40'00" W | 54.47' |



12-29-05

HAGEDORN, INC.

1924 Broadway Vancouver, Wa. 98663
Ph: (360) 696-4428 (503) 283-6778

| | | |
|-----------------|-----------------|---------------|
| SCALE: 1"=100' | CALC. BY: CEW | DWG# 04-074SP |
| DATE: 12-28-05 | DRAWN BY: CC | PAGE 2 OF 2 |
| JOB NO.: 04-074 | CHECKED BY: BPT | |