

SURVEY

of LOTS 2-8 & 10 in BLOCK 3
of PRINDLE PARK ESTATES
(BK A, Pg 131)
in the NW 1/4 SE 1/4 and
in the SW 1/4 NE 1/4 of
SECTION 5, T1N, R5E, W.M.
SKAMANIA COUNTY, WA.

DEED REFERENCE

STATUTORY WARRANTY DEED
BK 68, PG 827 (3/05/1975)
STATUTORY WARRANTY DEED
MAUZT TO SPEIGHTS
BK 127, PG 429 (2/21/1992)

ROAD NOTE

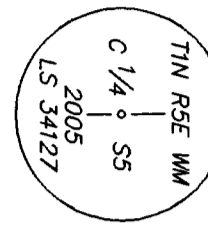
THE ROAD ALIGNMENT SHOWN WAS CREATED FROM THE
STATE HIGHWAY PLANS APPROVED ON AUGUST 24, 1937,
SHEET 2 OF 3 "SR 140 WASHOULAL RIVER TO
MOHERSON'S STORE". WE USED THE RECORD DELTAS AND
DEGREE DATA FOR THE CURVES AND TANGENT DISTANCES
BETWEEN STATIONS SHOWN TO COME UP WITH OUR MODEL.
I THEN TOOK THE ALIGNMENT FROM R.O.S. 3-281 AND
ROTIATED THE BEARING FOR THE N-S CENTERLINE OF
SECTION 5 OF N 75°37'04" E TO OUR BEARING OF N
01°15'08" E, COMING UP WITH A CENTERLINE BEARING OF S
75°51'04" E. OUR MODEL OF THE STATE HIGHWAY PLANS
WAS THEN ROTATED TO THIS BEARING. THE DISTANCE CALL
OF 225' AT THE SE CORNER OF THE SECTION WAS
CALCULATED AT 229.81'. CENTERLINE TIES SEEM TO FIT
OUR MODEL ALIGNMENT SATISFACTORILY.

FOUND 1 1/2" I.R. WITH YPC STAMPED GLASSER 15024" AS SHOWN IN AF# 2004154515

NOTE:
COURSES SHOWN ALONG THE CENTERLINE
OF CANYON CREEK ARE FOR MATHEMATICAL
CLOSURE PURPOSES ONLY. THE CREEK
BOUNDARY IS SUBJECT TO THE NATURAL
MOVEMENT & MEANDERING OF THE CREEK.

POSITION OF 2 1/2" DIAMETER
BRASS DISK (LS 9579) AS
SHOWN IN AF# 2004154515

SET 1" I.P. WITH BRASS
CAP FOR C 1/4 CORNER
MARKED AS SHOWN
R.P.s: N 88° E, 32.79'
52" ALDER, S 07° E, 32.41'



LINE	BEARING	DISTANCE
L37	S 89°05'00" E	82.81'
L38	N 62°00'00" E	110.00'
L39	N 41°30'00" E	200.00'
L40	N 54°00'00" W	90.00'

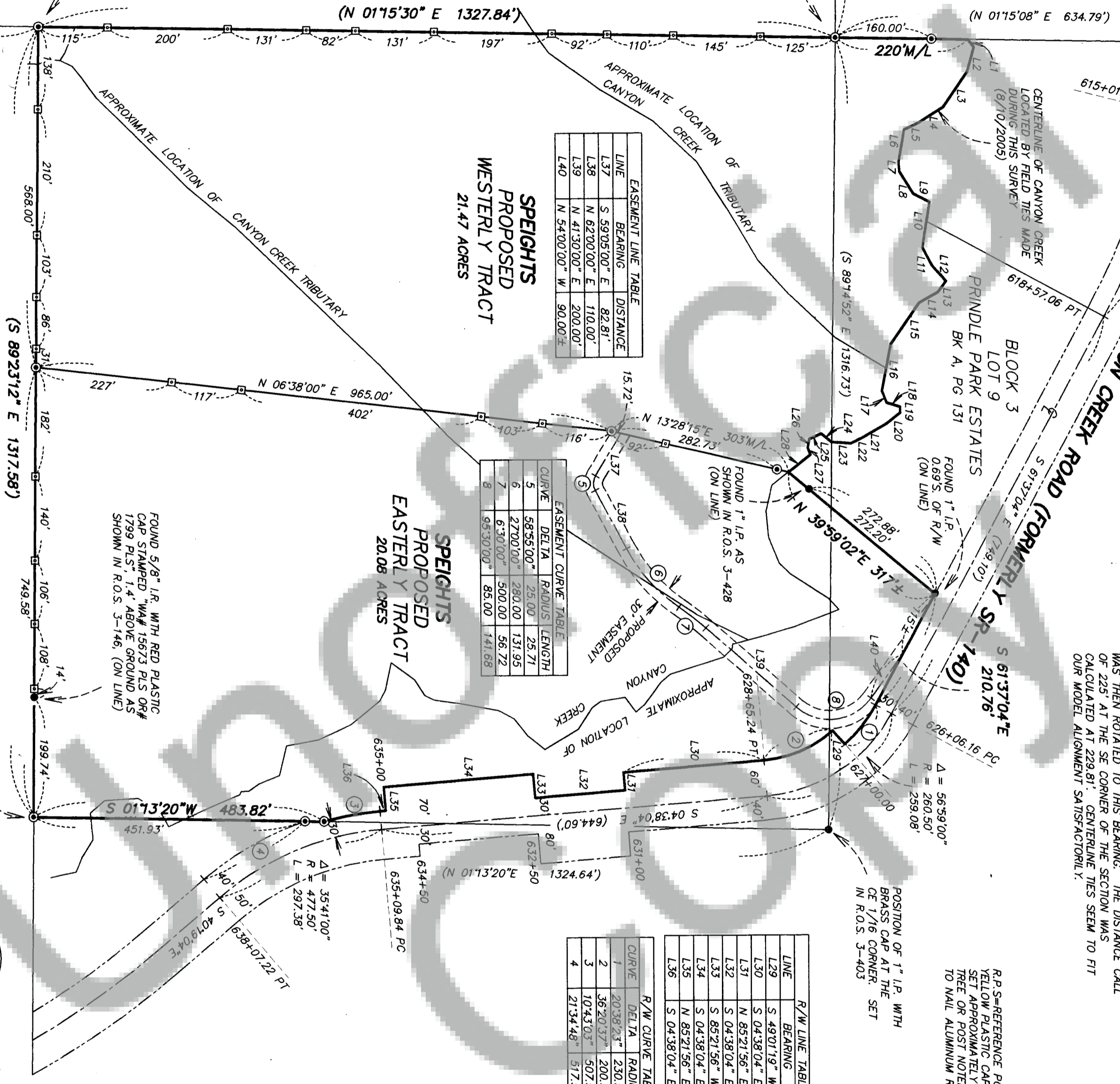
LINE	BEARING	DISTANCE
L37	S 89°05'00" E	82.81'
L38	N 62°00'00" E	110.00'
L39	N 41°30'00" E	200.00'
L40	N 54°00'00" W	90.00'

CURVE	DELTA	RADIUS	LENGTH
5	56°55'00"	25.00'	25.71'
6	27°00'00"	280.00'	131.95'
7	6°30'00"	500.00'	56.72'
8	95°30'00"	85.00'	141.68'

LINE	BEARING	DISTANCE
L29	S 49°01'19" W	30.00'
L30	S 04°38'04" E	234.76'
L31	N 85°21'56" E	30.00'
L32	S 04°38'04" E	150.00'
L33	S 85°21'56" W	40.00'
L34	S 04°38'04" E	250.00'
L35	N 85°21'56" E	40.00'
L36	S 04°38'04" E	9.84'

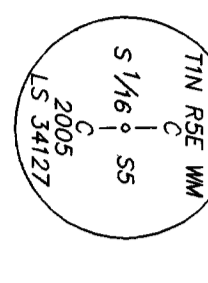
R/W CURVE TABLE	DELTA	RADIUS	LENGTH
1	20°58'24"	230.50'	83.03'
2	36°20'37"	200.50'	127.18'
3	10°43'05"	507.50'	94.93'
4	21°34'48"	517.50'	194.91'

LINE	BEARING	DISTANCE
L1	N 51°00'00" E	16.00'
L2	S 75°00'00" E	43.00'
L3	S 55°00'00" E	70.00'
L4	S 33°00'00" E	49.00'
L5	S 25°00'00" E	26.00'
L6	S 80°00'00" E	54.00'
L7	N 84°00'00" E	16.00'
L8	N 58°00'00" E	43.00'
L9	N 27°00'00" E	30.00'
L10	S 81°00'00" E	27.00'
L11	N 62°00'00" E	34.00'
L12	N 49°00'00" E	34.00'
L13	S 54°00'00" E	23.00'
L14	S 30°00'00" E	35.00'
L15	S 55°00'00" E	83.00'
L16	S 29°00'00" E	79.00'
L17	N 67°00'00" E	21.00'
L18	N 18°00'00" E	23.00'
L19	N 86°00'00" E	10.00'
L20	S 37°00'00" E	30.00'
L21	S 30°00'00" E	43.00'
L22	S 26°00'00" E	25.00'
L23	S 05°00'00" W	22.00'
L24	S 38°00'00" W	32.00'
L25	S 23°00'00" E	22.00'
L26	S 80°00'00" E	15.00'
L27	N 68°00'00" E	13.00'
L28	S 38°00'00" E	47.00'

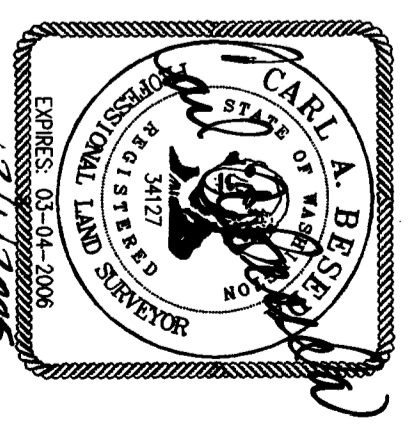


NARRATIVE

THE PURPOSE OF THIS SURVEY WAS TO MONUMENT AND BOUNDARY
LINE ADJUST TWO 'SPEIGHTS TRACTS' AS SHOWN. THE SPEIGHTS
TRACTS CURRENTLY CONSIST OF LOTS 2 THROUGH 8 AND LOT 10
OF PRINDLE PARK ESTATES. A RANDOM CONTROL TRAVERSE WAS
RAN FROM EXISTING CONTROL POINTS SET IN CONJUNCTION WITH
R.O.S. 3-403. A NEW TRAVERSE WAS RUN THROUGH OUR SITE AND
CLOSED ON THE ABOVE CONTROL POINTS. NEW MONUMENTS
ESTABLISHED WERE SET RADIALY FROM THE ABOVE DESCRIBED
TRAVERSES WHICH MET THE REQUIREMENTS OF WAC 350-130-090.
FIELD EQUIPMENT USED CONSISTED OF A 3-SECOND TOTAL
STATION INSTRUMENT WITH ELECTRONIC DATA COLLECTOR.



Filed for record this 8th day of December, 20 05
at 5:24pm in AUDITOR'S FILE # 2005159811 at the
request of Hagedorn, Inc.
(Signed) Carl A. Best
(Deputy County Auditor)
NOTE: Hagedorn, Inc. makes no warranties as to matters of unwritten
title such as acquiescence, estoppel, adverse possession, etc.



This map correctly represents a survey made by me or under
my direction in conformance with the requirements of the Survey
Recording Act at the request of SARAH STOOKEY
in OCTOBER, 2005

SURVEYOR'S CERTIFICATE

- YPC = YELLOW PLASTIC CAP
- R/W = RIGHT-OF-WAY
- MONUMENT AS SHOWN (TIED 9/28/2005)
- SET 5/8" x 30" IRON REBAR WITH ORANGE PLASTIC CAP STAMPED 'BESUDA 34127' WITH STEEL FENCEPOST SET ALONGSIDE TO NEAREST FOOT
- R.O.S. = RECORD OF SURVEY
- LGR = LAND CORNER RECORD
- () RECORD DATA PER AF# 2004154515
- AF# = AUDITOR'S FILE NUMBER
- I.P. = IRON PIPE
- I.R. = IRON ROD
- ☉ = CENTERLINE
- R/W = RIGHT-OF-WAY

HAGEDORN, INC.
Surveying and Engineering
1924 Broadway Vancouver, WA 98663
Ph: (360) 696-4428 (503) 283-6778

SCALE: 1"=150'
DATE: 12/01/05
JOB NO.: 05-153
CALC. BY: GAB
DRAWN BY: GAB
CHECKED BY: BPT
SHEET 1 OF 1