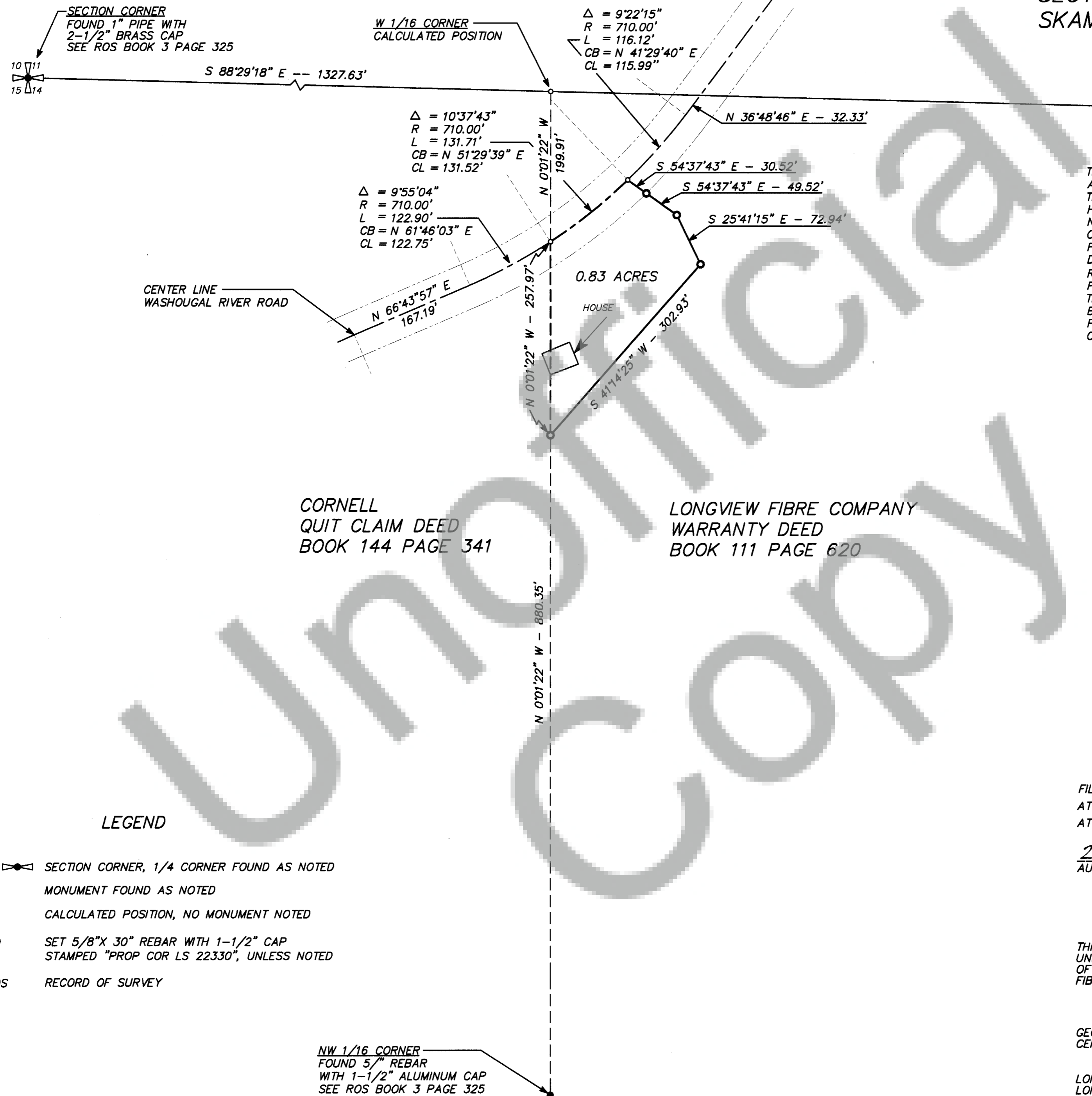


RECORD OF SURVEY  
FOR  
LONGVIEW FIBRE COMPANY  
IN THE NE 1/4 OF THE NW 1/4 OF  
SECTION 14, T 2 N, R 5 E, W.M.  
SKAMANIA COUNTY, WASHINGTON

OCTOBER 19, 2005



THE PURPOSE OF THIS SURVEY WAS TO DELINEATE A TRACT OF LAND IN THE NORTHEAST QUARTER OF THE NORTHWEST QUARTER OF SECTION 14. THE HOUSE SHOWN ON THIS MAP WAS BUILT IN THE NORTHEAST QUARTER OF THE NORTHWEST QUARTER OF SAID SECTION 14, ENCROACHING ON LONGVIEW FIBRE PROPERTY. THE ENCROACHMENT WAS DISCOVERED DURING A PREVIOUS SURVEY, SEE RECORD OF SURVEY BOOK 3 PAGE 325, AUDITOR'S FILE NUMBER 136995. THE WASHOUGAL RIVER ROAD CENTER LINE IS BASED ON DATA SHOWN ON CO. RD. NO. 11060, FILE DRAWER 2, FOLDER 3.1, AND THE APPARENT CENTER LINE.

CORNELL  
QUIT CLAIM DEED  
BOOK 144 PAGE 341

LONGVIEW FIBRE COMPANY  
WARRANTY DEED  
BOOK 111 PAGE 620



BASIS OF BEARING  
RECORD OF SURVEY  
BOOK 3 PAGE 325

0' 100' 200' 300'  
SCALE: 1 INCH = 100 FEET

LEGEND

- SECTION CORNER, 1/4 CORNER FOUND AS NOTED
- MONUMENT FOUND AS NOTED
- CALCULATED POSITION, NO MONUMENT NOTED
- SET 5/8" X 30" REBAR WITH 1-1/2" CAP STAMPED "PROP COR LS 22330", UNLESS NOTED
- ROS RECORD OF SURVEY

NW 1/16 CORNER  
FOUND 5/8" REBAR  
WITH 1-1/2" ALUMINUM CAP  
SEE ROS BOOK 3 PAGE 325

AUDITOR'S CERTIFICATE  
FILED FOR RECORD THIS 22nd DAY OF November, 2005  
AT 12:29 PM IN BOOK OF SURVEYS AT PAGE  
AT THE REQUEST OF LONGVIEW FIBRE COMPANY.

2005159606  
AUDITOR'S FILE NUMBER

Michael Harrison by  
SKAMANIA COUNTY AUDITOR  
*M. Harrison*

SURVEYOR'S CERTIFICATE  
THIS SURVEY CORRECTLY REPRESENTS A SURVEY MADE BY ME OR UNDER MY DIRECTION IN CONFORMANCE WITH THE REQUIREMENTS OF THE SURVEY RECORDING ACT AT THE REQUEST OF LONGVIEW FIBRE COMPANY IN JUNE 2005.

GEORGE J. FORD, PLS  
CERTIFICATE NO. 22330

LONGVIEW FIBRE COMPANY  
LONGVIEW, WA 98632

