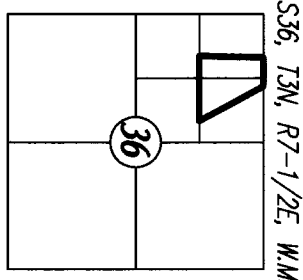
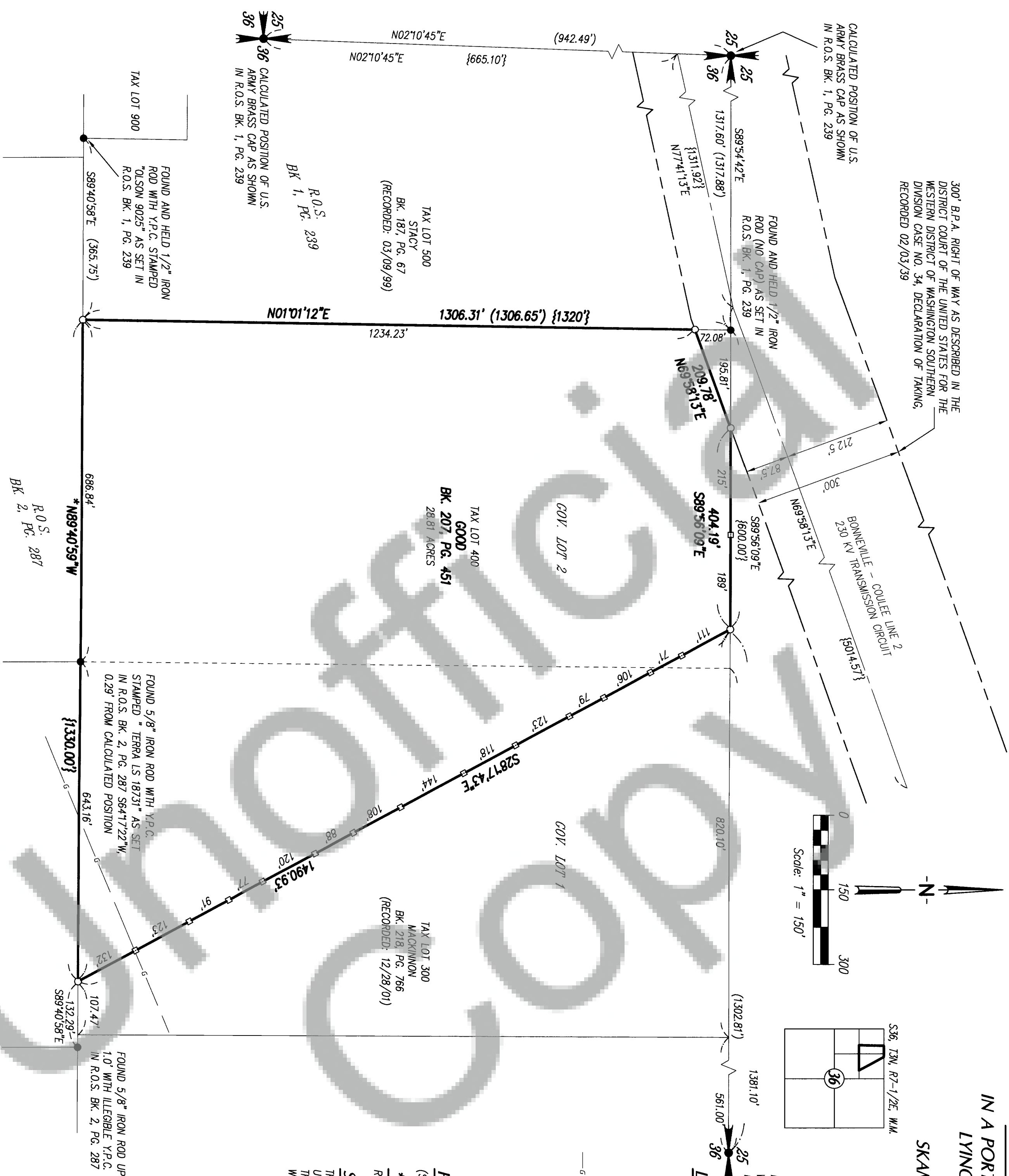


# RECORD OF SURVEY

IN A PORTION OF GOVERNMENT LOT 1 AND 2  
LYING IN THE NW 1/4 OF SECTION 36  
T3N, R7-1/2E, WM1  
SKAMANIA COUNTY, WASHINGTON



**DEED REFERENCE**  
BARGAIN AND SALE DEED  
VIRGINIA GOOD

TO  
VIRGINIA GOOD (TRUSTEE)  
BK 207, PG. 451-453  
(RECORDED: 03/08/01)

FOUND AND HELD 1-3/4\"/>  
WAGON AXLE, UP 1.9' AS SHOWN  
IN R.O.S. BK. 1, PG. 239

## LEGEND

- SET 5/8" x 24" IRON ROD WITH YELLOW PLASTIC CAP STAMPED "PLS 32448" (6' GREEN STEEL "T" FENCE POST SET NEXT TO IRON ROD AS WITNESS POST)
- SET 6' GREEN STEEL "T" FENCE POST ON DEED LINE
- MONUMENT AS NOTED (MONUMENTS NOTED AS FOUND WERE TIED IN AUGUST, 2005)
- APPROXIMATE LOCATION OF PACIFIC NORTHWEST PIPELINE CORPORATION GAS LINE
- ( ) RECORD SURVEY DISTANCE
- { } RECORD DEED DISTANCE
- y.p.c. YELLOW PLASTIC CAP
- R.O.S. RECORD OF SURVEY
- S.P. SHORT PLAT
- L.C.R. LAND CORNER RECORD

## PROCEDURE

(SEE NARRATIVE)

## \* BASIS OF BEARINGS

R.O.S. BK. 1, PG. 239. (SEE NARRATIVE)

## SURVEYOR'S CERTIFICATE

THIS MAP CORRECTLY REPRESENTS A SURVEY MADE BY ME OR UNDER MY DIRECTION IN CONFORMANCE WITH THE REQUIREMENTS OF THE SURVEY RECORDING ACT, AT THE REQUEST OF DAN GREEN WITH WOODLAND MANAGEMENT IN AUGUST, 2005.



## AUDITOR'S CERTIFICATE

FILED FOR RECORD THIS 30th DAY OF September, 2005.  
AT 4:45 PM IN BOOK        OF SURVEYS AT PAGE        AT  
THE REQUEST OF MACKAY & SPOSITO, INC. AF 2005158922

Dan Green  
DEPUTY COUNTY AUDITOR

## NARRATIVE

THE PURPOSE OF THIS SURVEY WAS TO CALCULATE AND MONUMENT THE REFERENCED PARCEL. AN ELECTRONIC MATHEMATICAL MODEL WAS DEVELOPED FROM R.O.S. BK. 1, PG. 239 AND R.O.S. BK. 2, PG. 287. FIELD WORK CONSISTED OF A CLOSED TRAVERSE ORIENTED BETWEEN EXISTING MONUMENTS AT THE SE CORNER OF TAX LOT 900 AND THE NORTH 1/4 CORNER OF SECTION 36, T3N, R7-1/2E NOTED HEREON AS HELD. THE TRAVERSE WAS PERFORMED WITH A GEOMETER 3-SECOND "TOTAL STATION" INSTRUMENT WITH ELECTRONIC DATA COLLECTOR. THE TRAVERSE WAS ADJUSTED BY COMPASS RULE AND THE RESULTING LINEAR ERROR WAS EQUAL TO OR EXCEEDED THE REQUIREMENTS OF WAC 332-130-090. RADIAL TIES FROM TRAVERSE POINTS WERE MADE TO FOUND MONUMENTS. FOUND MONUMENTS CHECKED SATISFACTORILY (0.10' OR LESS) UNLESS NOTED OTHERWISE. IRON RODS WERE SET BY RADIAL STAKEOUT FROM TRAVERSE POINTS.

NOTE: MACKAY & SPOSITO INC. MAKES NO WARRANTIES AS TO MATTERS OF UNWRITTEN TITLE SUCH AS ACQUESCENCE, ESTOPPEL, ADVERSE POSSESSION, ETC.

|  |                                |                            |  |
|--|--------------------------------|----------------------------|--|
| <b>Mackay &amp; Sposito, Inc.</b>                        |                                |                            |  |
| ENGINEERS SURVEYORS PLANNERS                             |                                |                            |  |
| 1325 SE TECH CENTER DRIVE, SUITE 140 VANCOUVER, WA 98683 |                                |                            |  |
| (360) 695-3411 (503) 289-6726 PTLD FAX (360) 695-0833    |                                |                            |  |
| CALC. BY: <u>J.M.B.</u>                                  | DRAWN BY: <u>J.M.B.</u>        | JOB NO.: <u>14224</u>      |  |
| CHECKED BY: <u>N.J.B./D.L.S.</u>                         | DWG. NAME: <u>14224RS1.DWG</u> | SHEET <u>1</u> OF <u>1</u> |  |