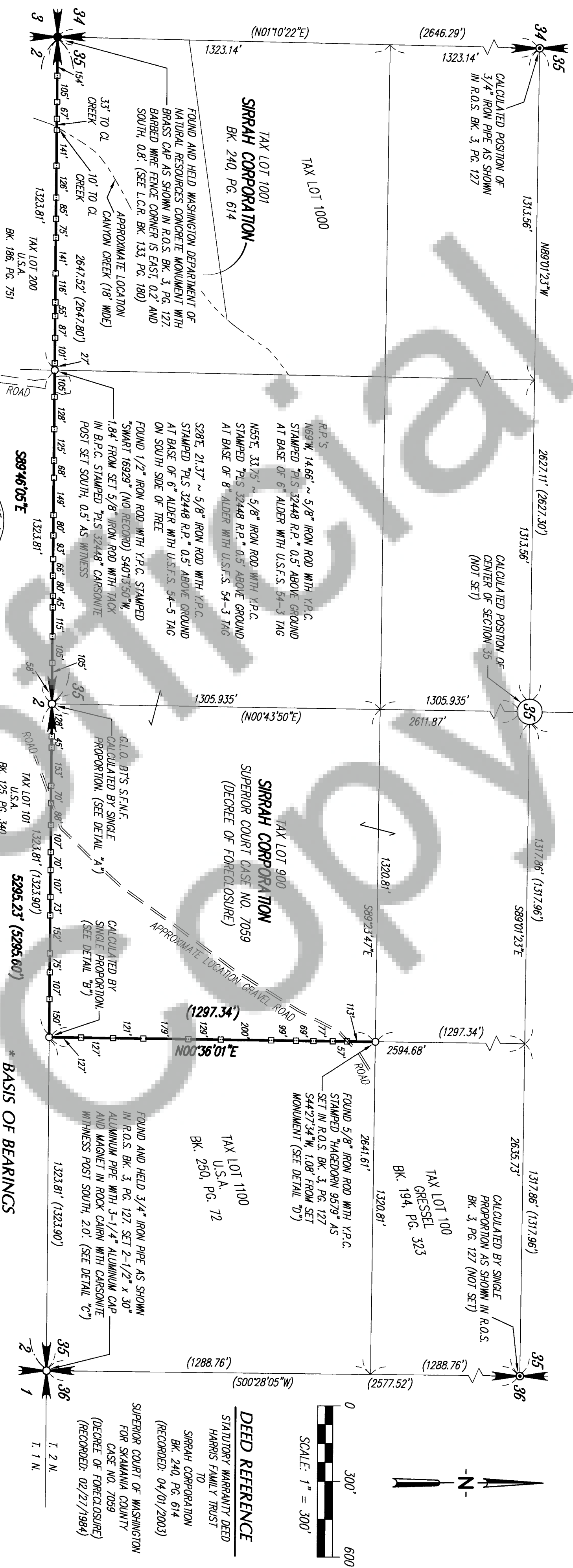


IN THE SW 1/4 AND THE SE 1/4 OF SECTION 35
T2N, R5E, W4M,
SKAMANIA COUNTY, WASHINGTON

THE PURPOSE OF THIS TRIAL WAS TO CALCULATE AND MONUMENT THE SOUTH LINE OF THE SW 1/4, THE SOUTH LINE OF THE SW 1/4 OF THE SE 1/4 AND THE EAST LINE OF THE SW 1/4 OF THE SE 1/4 OF SECTION 35. AN ELECTRONIC MATHEMATICAL MODEL WAS DEVELOPED FROM R.O.S. BK. 3, PG. 127. FIELD WORK CONSISTED OF A CLOSED RANDOM TRAVERSE ORIENTED BETWEEN EXISTING MONUMENTS AT THE SW AND SE CORNERS OF SECTION 35, NOTED HEREON AS HELD. FROM THIS TRAVERSE, A CLOSED RANDOM TRAVERSE WAS MADE TO THE SE 1/616TH CORNER. FIELD WORK WAS PERFORMED WITH A GEOMETER 3-SECOND "TOTAL STATION" INSTRUMENT WITH ELECTRONIC DATA COLLECTOR. THE TRAVERSE WAS ADJUSTED BY COMPASS RULE AND THE RESULTING LINEAR ERROR OF CLOSURE WAS EQUAL TO OR EXCEEDED THE REQUIREMENTS OF WAC 332-130-090. RADIAL TIES FROM TRAVERSE POINTS WERE MADE TO FOUND MONUMENTS. U.S.F.S. SUPPLIED CARSONITE POSTS WERE SET "ON LINE" WITHIN A MAXIMUM DISTANCE OF 250' AS SHOWN HEREON. THE NORTH FACE OF TREES LING ADJACENT TO AND SOUTH OF THE SOUTH LINE OF THE SW 1/4 AND SOUTH LINE OF THE SW 1/4 OF THE SE 1/4 AS WELL AS THE EAST FACE OF TREES LING ADJACENT TO AND EAST OF THE EAST LINE OF THE SW 1/4 OF THE SE 1/4 WERE MARKED WITH BLUE PAINT AS A WARNING OF TREES OFF PROPERTY FOR TIMBER CUTTING PURPOSES.

STATUTORY WARRANTY DEED
HARRIS FAMILY TRUST

SUPERIOR COURT OF WASHINGTON
FOR SKAMANIA COUNTY
CASE NO. 7059
(DECREE OF FORECLOSURE)
(RECORDED: 02/27/1984)

THE BEARING OF S89°46'05"E ALONG THE SOUTH LINE OF SECTION 35 AS SHOWN IN R.O.S. BK. 3, PG. 127. (SEE NARRATIVE)

THIS MAP CORRECTLY REPRESENTS A SURVEY MADE BY ME OR UNDER MY DIRECTION IN CONFORMANCE WITH THE REQUIREMENTS OF THE SURVEY RECORDING ACT, AT THE REQUEST OF EUGENE "BUD" HARRIS WITH THE SIRRAH CORP. (AUD DON KARSOCH WITH THE U.S.F.S.) IN JUNE OF 2005.



David J. Jermann
DEPUTY COUNTY AUDITOR

ENGINEERS SURVEYORS PLANNERS

(360) 695-3411	(503) 289-6726 PTLTD	FAX (360) 695-0833
CALC. BY: J.M.B.	DRAWN BY: J.M.B.	JOB NO.: 14095

[illegible]

DETAIL 'A'
NO SCALE

SET 2-1/2" x 30" ALUMINUM PIPE WITH 3-1/4" ALUMINUM CAP AND MAGNET IN ROCK CARNI WITH CARSONITE WITNESS POST SOUTH, 2.0'

38' HEMLOCK SCRIBBLED
"72N RSE S35 BT"

30' HEMLOCK SCRIBBLED
"71N RSE S2 BT"

12' HEMLOCK SCRIBBLED
"71N RSE S35 BT"

DETAIL 'B'
NO SCALE

SET 2-1/2" x 30" ALUMINUM PIPE WITH 3-1/4" ALUMINUM CAP AND MAGNET IN ROCK CARNI WITH CARSONITE WITNESS POST SOUTH, 2.0'

18' HEMLOCK SCRIBBLED
"71N RSE S35 BT"

24' HEMLOCK SCRIBBLED
"71N RSE S2 BT"

20' HEMLOCK SCRIBBLED
"72N RSE S35 BT"

DETAIL 'C'
NO SCALE

SET 2-1/2" x 30" ALUMINUM PIPE WITH 3-1/4" ALUMINUM CAP AND MAGNET IN ROCK CARNI WITH CARSONITE WITNESS POST SOUTH, 2.0'

12' HEMLOCK SCRIBBLED
"72N RSE S35 BT"

32' GRAND FIR SCRIBBLED "72N RSE S35 BT"

30' HEMLOCK SCRIBBLED
"72N RSE S35 BT"

LEGEND

- SET MONUMENT
- FOUND MONUMENT
- ⊙ CALCULATED POINT