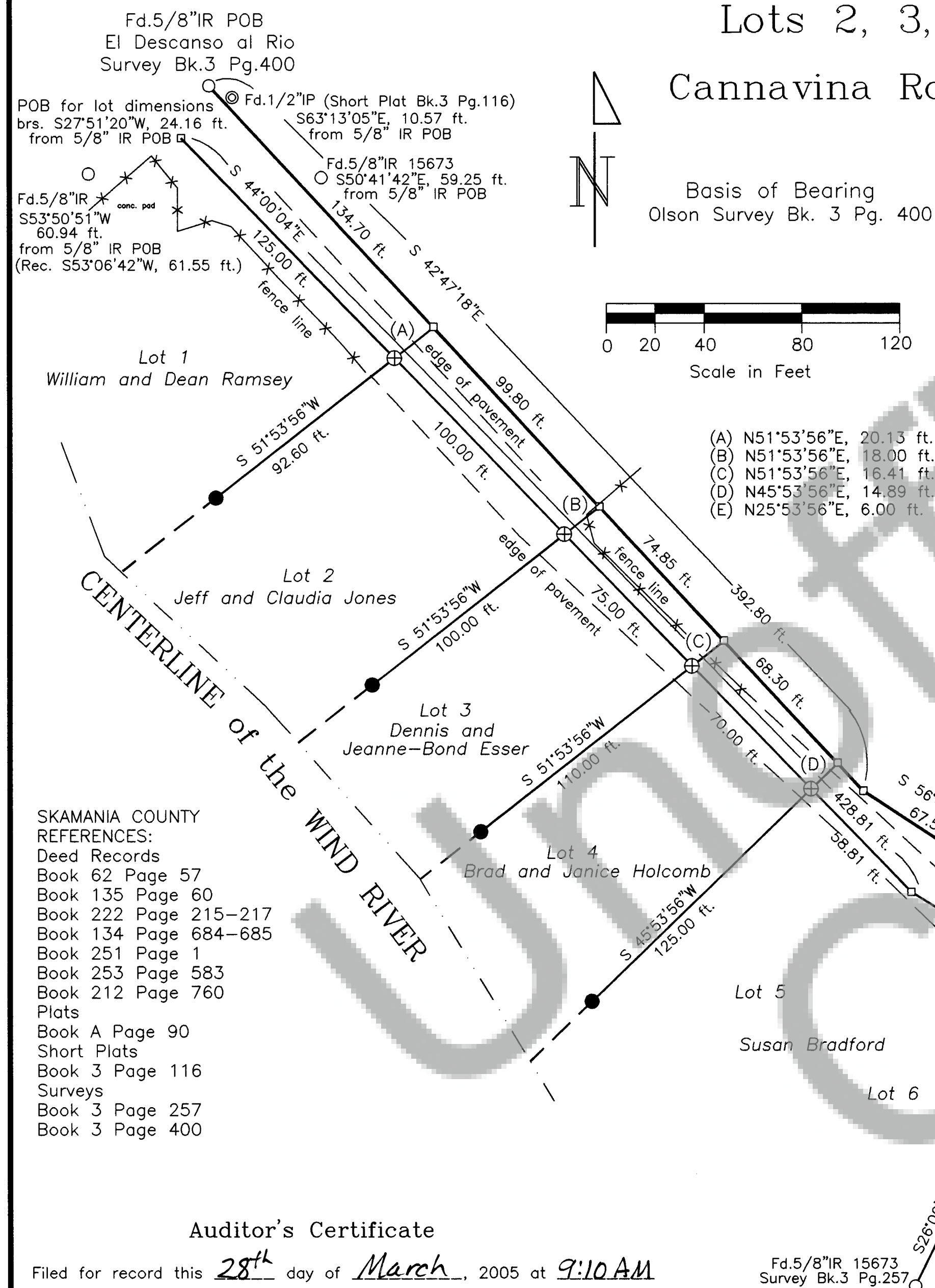


## Survey in the NE1/4 SW1/4 Sec.15, T.4 N., R.7 E., W.M.

## Lots 2, 3, and 4 El Descanso al Rio

## Cannavina Rd., Skamania County, Washington



## Narrative

The original plat of the "El Descanso al Rio" subdivision, was created in March 1934 (Skamania County Plats Bk. A P.90). The initial point shown on the plat is a call for I.P. 449 ft. North and 3817 ft. East from ¼ corner on the East line of Section 15. In a 1987 survey for Hanson (Short Plats Bk. 3 Pg. 116), Trantow Survey makes note to an aluminum pipe and wooden stake found for POB of El Descanso al Rio. This was based on parole evidence from owner Hanson. A later survey by Trantow in 1997 (Surveys Bk.3 Pg.257), defined lots 7, 8, and 9 of El Descanso al Rio. This survey shows two "IP"s referencing the POB for lot dimensions. Although not stated, the easterly of the two is the pipe shown on the Hanson Short Plat.

In July 2001 Olsen Engineering surveyed much of section 15, T4N, R7E, W.M. (Skamania County Surveys Bk.3 Pg.400). Parcel 5 of this survey is common to the El Descanso al Rio subdivision centerline. Due to the inability to verify or find original evidence, Olsen Engineering did not accept the pipes or centerline location of the Trantow surveys, setting a monument based on the original call to the initial point. Olson states finding a 5/8\" IR at the location of the westerly pipe shown on the 1997 Trantow survey (Skamania County Surveys Bk.3 Pg.400) but neither was recovered at this time, the location falling within a concrete pad.

The original plat called for a 12 foot wide roadway, 6 feet each side of centerline from the described point of beginning. In 1936, owners dedicated a full 40 foot roadway to Skamania County. In 1965, Resolution no. 423 vacated the connection of this road to Soda Springs in the NW ¼ of section 15, with new access from the Wind River Highway via Cannavina Road. In 1981, Resolution 442-A vacated Cannavina Road beyond lot 7 of El Descanso al Rio.

These resolutions make no mention of recovering the initial point or setting newer roadway monuments. Unfortunately, the original iron pipe and it's exact location have since been lost. Found monuments set by Trantow for lots 7-9 (Skamania County Surveys Bk.3 Pg.257) closely agree with the lot lines projected from the monument set for the POB by the 2001 Olsen survey (Skamania County Surveys Bk.3 Pg.400). However, there was approximately ten feet difference in the sideline locations of lots 1-6 using the Olsen survey alone. Holding the angular relationship given on Trantow's survey (Skamania County Surveys Bk.3 Pg.257), we projected a centerline location from the found monuments that closely fit previous local corner locations given in parole evidence from adjacent landowners. This location also agreed with the tie to the pipe shown as the POB on the Hanson Short Plat (Short Plats Bk. 3 Pg. 116).

We used the information shown on the 1997 Trantow survey (Surveys Bk.3 Pg.257) and the projected centerline location and calculated POB for lot dimensions to determine the sideline dimensions of lots 1-6. These locations respected current occupation, some of which date back to the early 1970's. The Olsen survey centerline fits the wider, 20 foot half width of the roadway at the POB, decreasing to 14 feet near the south line of lot 4. The Olsen survey centerline is easterly of the currently paved roadway. Therefore, monuments were set in the pavement along the projected 1997 centerline with calculated ties to the Olsen line shown hereon.

## Surveyor's Certificate

I, Berta Romio, registered as a land surveyor in the State of Washington, certify that this map correctly represents survey conducted by me or under my supervision during the period of January 2005, that the distances, courses and angles are shown hereon correctly, and that the monuments have been set, staking the lots on the ground as depicted on this drawing.

Dated this 28<sup>th</sup> day of MARCH, 2005.



Tanglewood Surveying  
P.O. Box 194.  
Underwood, WA. 98651  
541-386-6506  
E-mail: tanglewood@gorge.net

## Auditor's Certificate

Filed for record this 28<sup>th</sup> day of March, 2005 at 9:10 AM

recorded by AF# 2005156729 in Surveys

at the request of Tanglewood Surveying.

*Michael Harrison*  
County Auditor

Field work for this project was conducted during January 2005, the purpose of which was to establish lot lines for lots 2-4. All corners shown as found were located using a 5-second theodolite and related measuring equipment meeting state standards (WAC 332-130-090,100) at time of survey. Traverse closure of 1:10,000 was not adjusted.