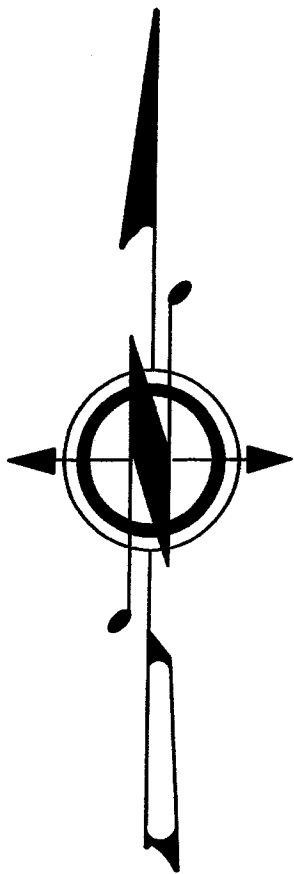


2005156416

”NUMBER 6” SURVEY
SEE SHEET 2 FOR CORNER NOTES
AND GPS CONTROL DIAGRAM



SCALE: 1"=600 FEET
0 300 600 1200
MCS SOUTH ZONE NAD '83(91)

SECTION INDEX DIAGRAM											
X	X	X	X	X	X	X	X	X	X	X	X
X	X	X	X	X	X	X	X	X	X	X	X
X	X	X	X	X	X	X	X	X	X	X	X
X	X	X	X	X	X	X	X	X	X	X	X
X	X	X	X	X	X	X	X	X	X	X	X
X	X	X	X	X	X	X	X	X	X	X	X
X	X	X	X	X	X	X	X	X	X	X	X
X	X	X	X	X	X	X	X	X	X	X	X
X	X	X	X	X	X	X	X	X	X	X	X
X	X	X	X	X	X	X	X	X	X	X	X
X	X	X	X	X	X	X	X	X	X	X	X

CONTROL SPECIFICATIONS:
THE CONTROL PORTION OF THIS SURVEY IS IN COMPLIANCE WITH THE FEDERAL GEODETIC CONTROL COMMITTEE'S "GEODETIC GEODETIC ACTUARY STANDARDS AND SPECIFICATIONS FOR USING GPS RELATIVE POSITIONING TECHNIQUES, VERSION 5.0, REPRINTED WITH CORRECTIONS AUGUST 1, 1999," FOR GROUP C, ORDER 1 SURVEYS, CONTROL ON THIS SURVEY WAS DONE USING FOUR TRIMBLE 5700 GPS FIELD SURVEY RECEIVERS.

METHOD OF SURVEY:
THIS SURVEY WAS DONE BY FIELD TRAVERSE USING A TOPCON GPS 5004 BASED TOTAL STATION. TRAVERSES WERE CLOSED LOPS OR CLOSED BETWEEN KNOWN POINTS. LINEAR AND ANGULAR CLOSURES EXCEEDED THOSE SHOWN IN WAC 332-150-090 FOR LAMBERT GRID TRAVERSES.

BASIS OF BEARINGS AND DISTANCES:
WASHINGTON COORDINATE SYSTEM, SOUTH ZONE, N.A.D. '83/91 DERIVED FROM GLOBAL POSITIONING SYSTEM (GPS) TIES TO THE FOLLOWING CLARK COUNTY SURVEYOR'S OFFICE GPS POINTS:
(U.S. SURVEY FEET)
70 N 146°17'2 368 E 1188485 539
71 N 171°17'3 605 E 1192593 019
93 N 163°09'700 E 1195310 867
94 N 155°010 956 E 1172325 722
NEW POSITIONS DETERMINED BY THIS SURVEY USING GPS METHODS:
(U.S. SURVEY FEET)
3109 N 156°253 397 E 1183693 444
3110 N 153°855 423 E 1181458 742

CONVERGENCE: -1' 16' 43" AT CORNER J-23.
THE AREAS AND DISTANCES SHOWN ARE GRID. DIVIDE THE GRID DISTANCE BY THE COMBINED GRID FACTOR OF 0.99989863 TO OBTAIN THE GROUND DISTANCE. THE COMBINED GRID FACTOR IS DERIVED FROM AN ELEVATION FACTOR OF 0.99987915 AND A LATITUDE FACTOR OF 1.0001968 COMPUTED DURING STARNET ADJUSTMENT.

DESCRIPTION OF STATE OWNERSHIP:
THE NW 1/4, THE N 1/2 OF THE SW 1/4, AND THE SW 1/4 OF THE SW 1/4, ALL IN SECTION 12, TOWNSHIP 3 NORTH, RANGE 4 EAST, WM., AND, THE W 1/2 OF SECTION 13, TOWNSHIP 3 NORTH, RANGE 4 EAST, WM., ALL IN CLARK COUNTY, WASHINGTON.

NOTE: THE ABOVE LEGAL DESCRIPTION AND SUBSEQUENT SURVEY IS BASED ON A TITLE REPORT PREPARED BY THE WASHINGTON STATE DEPARTMENT OF NATURAL RESOURCES TITLE OFFICE, DATED 8-25-2004.

GLD HISTORY:
THE RANGE LINE BETWEEN TOWNSHIP 3 NORTH, RANGES 4 AND 5 EAST WAS SURVEYED BY U.S. DEPUTY SURVEYOR ROBERT WEBSTER IN 1892 UNDER CONTRACT NO. 325. THIS TOWNSHIP WAS SURVEYED BY U.S. DEPUTY SURVEYOR ROBERT WEBSTER IN 1896 UNDER CONTRACT NO. 414.

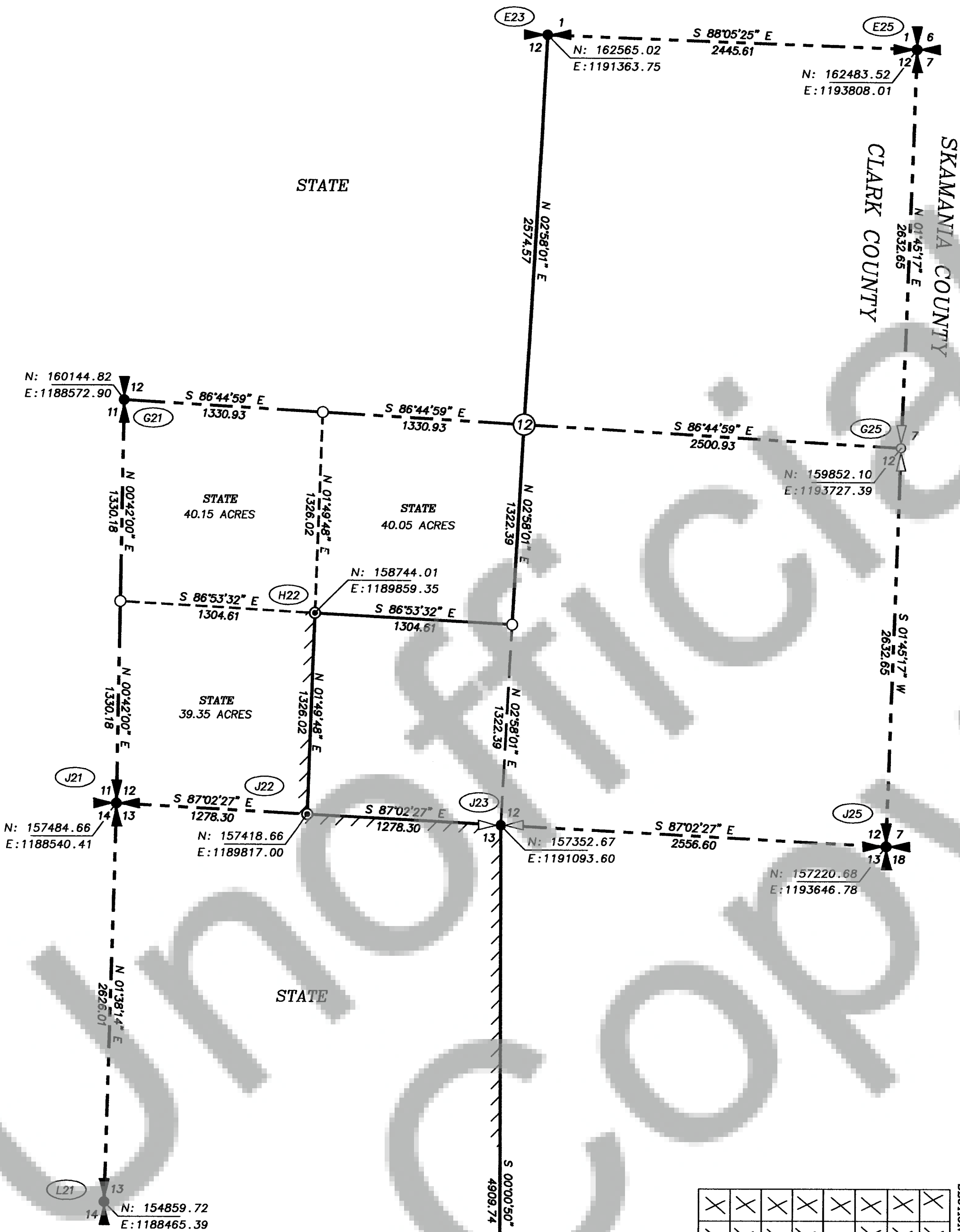
LEGEND

STANDARD DNR MONUMENTS ARE:
2 3/8" O.D. ALUM. ALLOY PIPE W/"BREAKAWAY" PLASTIC BASE.
3 1/4" DIAM. ALUM. ALLOY CAP ATTACHED TO A 3/4" FLUTED ALUM. ROD STAMPED WITH PROPER CORNER IDENTIFICATION. PERMANENT, VERTICALLY ORIENTED MAGNETS ARE INCLUDED IN THE MONUMENT.

STANDARD DNR CAPS ARE:
3 1/4" DIAM. ALUM. ALLOY DISKS WITH A VERTICALLY ORIENTED MAGNET AND STAMPED W/PROPER CORNER IDENTIFICATION. POSTS WERE SET AT RANDOM INTERVALS ALONG THE NOTED SECTION OR SUB-DIVISIONAL LINES AND ARE WITHIN +/- ONE FOOT OF THE ACTUAL SECTION OR SUB-DIVISIONAL LINES.

CORNER SYMBOLS:

FOUND MONUMENT.
SET DNR MONUMENT
CALCULATED - NOT SET.



Number6a.dwg

AUDITOR'S CERTIFICATE

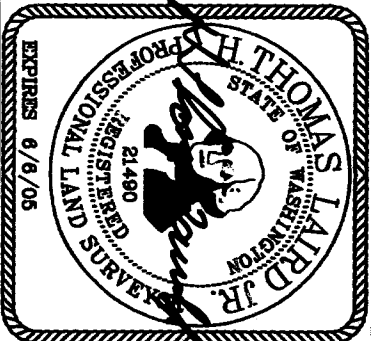
FILED FOR RECORD THIS 28th DAY OF February, 2005 AT 3:19 P.M. IN BOOK OF SURVEYS AT PAGE AT THE REQUEST OF THE WASHINGTON STATE DEPARTMENT OF NATURAL RESOURCES.

Michael Lawson, 2005156416, SKAMANIA COUNTY AUDITOR, AUDITOR'S FILE NUMBER

SURVEYOR'S CERTIFICATE

THIS MAP CORRECTLY REPRESENTS A SURVEY MADE BY ME OR UNDER MY DIRECTION IN CONFORMANCE WITH THE REQUIREMENTS OF THE SURVEY RECORDING ACT AT THE REQUEST OF THE WASHINGTON STATE DEPARTMENT OF NATURAL RESOURCES IN JANUARY, 2005.

H. Thomas Laird Jr., PLS, 21490, CERTIFICATE NUMBER



A SURVEY IN SECTIONS 12 & 13

TOWNSHIP 3 NORTH, RANGE 4 EAST, W.M.

STATE OF WASHINGTON
DEPARTMENT OF NATURAL RESOURCES

LAND SURVEY SECTION-P.O. BOX 47060
OLYMPIA, WASHINGTON 98504-7060 (360)902-1206

FIELD CREW: GRANQUIST, RAY
FIELD BOOK: TAYLOR, & FEEN
3049
CALCD. BY: GASCHER--12/13/04
DRAWN BY: GASCHER--2/2/05
CHECKED BY: LAIRD--2/3/05
SHEET 1 OF 2
F.M.# 1427A

2005156416

“NUMBER 6” SURVEY CORNER NOTES
AND GPS CONTROL DIAGRAM

SEE SHEET 1 FOR SURVEY

CORNER NOTES:

E23 NORTH 1/4 CORNER OF SECTION 12

ACCEPTED CORNER
GLO HISTORY: SET BY GLO IN 1896 AND MARKED WITH A POST AND 2 BEARING TREES.
36" FIR STUB AT S3E, 60 LINKS (39.60 FEET)
36" FIR STUB AT N10E, 90 LINKS (58.40 FEET)
ON 1-3-05 THIS SURVEY FOUND THE 4" X 4" DNR CONCRETE MONUMENT WITH STAMPED BRASS CAP THAT WAS SET FROM ORIGINAL EVIDENCE AS SHOWN ON THE 1986 DNR SURVEY RECORDED IN BOOK 21 OF SURVEYS AT PAGE 54 AND IN DNR FIELD BOOK 607.12 AT PAGE 57.
THE FOLLOWING REFERENCES WERE NOTED:
3 RP'S
DNR CARSONITE WITNESS POST AT NORTH, 3 FEET.
36" FIR STUMP AT N88E, 49.92 FEET TO ALUMINUM NAIL IN TOP CENTER.
16" SUB ALPINE FIR AT S33W, 44.74 FEET TO ALUMINUM NAIL IN SOUTHEAST SIDE. THIS WAS AN 1966 RP. A 7" TREE, BUT THE NAIL WAS SO OVERGROWN THAT A NEW NAIL WAS SET.
FIELD BOOK 3049, PAGE 25

E29 NORTHEAST CORNER OF SECTION 12

ACCEPTED CORNER
GLO HISTORY: SET BY GLO IN 1892 AND MARKED WITH A POST WITH MOUND OF STONE 2 FEET HIGH WITH A 4 FOOT BASE AND 1 BEARING TREE.
3" LARCH AT S43W, 29 LINKS (19.14 FEET)
ON 9-27-04 THIS SURVEY FOUND THE BT, WHICH IS ACTUALLY A 32" NOBLE FIR, AT S39W, 19.1 FEET TO FACE. NO SCRIBE VISIBLE.
THE CORNER IS MARKED WITH A 4" X 4" DNR CONCRETE MONUMENT WITH STAMPED BRASS CAP SET IN 1989 BY DNR EMPLOYEE DAVE WELSH AT THE SITE OF THE POST REMAINS IN A MOUND OF STONE. HE FOUND THE BT ALSO.
THE FOLLOWING REFERENCES WERE NOTED:
2 RP'S
PK NAIL IN TOP OF 3' X 6' X 2' HIGH ROCK AT N64E, 28.94 FEET.
19" NOBLE FIR AT S66W, 20.86 FEET TO ALUMINUM NAIL IN SOUTH SIDE.
THE CORNER IS ON A STEEP, NORTHERLY FACING ROCK SLIDE.
FIELD BOOK 3049, PAGE 5

G21 WEST 1/4 CORNER OF SECTION 12

ACCEPTED CORNER
GLO HISTORY: SET BY GLO IN 1896 AND MARKED WITH A POST AND 2 BEARING TREES.
36" FIR STUB AT N60 1/2W, 14 LINKS (9.24 FEET)
48" FIR AT N68E, 8 LINKS (5.28 FEET)
IN 1968, DNR EMPLOYEE DAVE WELSH FOUND THE NE BEARING TREE FALLEN DOWN BUT WITH VISIBLE SCRIBING. HE ALSO FOUND THE NW BEARING TREE. A STUMP, DETERIORATED BUT WITH MARKS VISIBLE. HE SET A 4" X 4" DNR CONCRETE MONUMENT WITH STAMPED BRASS CAP GLO DISTANCE AND BEARING FROM THE NW BEARING TREE.
ON 10-13-04 THIS SURVEY FOUND THE DNR CONCRETE MONUMENT AND THE FALLEN BEARING TREE. THE FOLLOWING REFERENCES WERE NOTED:
3 RP'S
DNR CARSONITE WITNESS POST AT NORTH, 2 FEET.
21" FIR AT N3TE, 20.11 FEET TO ALUMINUM NAIL IN EAST SIDE.
23" FIR AT S42E, 4.51 FEET TO ALUMINUM NAIL IN SOUTHWEST SIDE.
FIELD BOOK 3049, PAGE 11

G25 EAST 1/4 CORNER OF SECTION 12

CALCULATED CORNER - NOT SET
GLO HISTORY: SET BY GLO IN 1892 AND MARKED WITH A POST AND 2 BEARING TREES.
10" LARCH AT N33E, 50 LINKS
20" LARCH STUB AT S65W, 78 LINKS
THIS CORNER WAS SEARCHED FOR BUT NOT FOUND.

H22 SOUTHWEST 1/16 CORNER OF SECTION 12

CALCULATED CORNER
ON 12-14-04 THIS SURVEY SET A 3/4" X 30" BREAKAWAY ALUMINUM ROD WITH STAMPED 3 1/2" DNR ALUMINUM CAP WITH MAGNET TO MARK THE CORNER POSITION. THE FOLLOWING REFERENCES WERE NOTED:
4 RP'S
DNR CARSONITE WITNESS POST AT NORTH, 3 FEET.
18" FIR AT N62E, 7.58 FEET TO ALUMINUM NAIL IN WEST SIDE.
12" FIR AT S10E, 10.94 FEET TO ALUMINUM NAIL IN WEST SIDE.
20" FIR AT N38W, 14.57 FEET TO ALUMINUM NAIL IN SOUTHWEST SIDE.
THE CORNER IS ABOUT 200' SOUTH OF "HIDDEN FALLS" ON COYOTE CREEK.
FIELD BOOK 3049, PAGE 23

J21 SOUTHWEST CORNER OF SECTION 12

ACCEPTED CORNER
GLO HISTORY: SET BY GLO IN 1896 AND MARKED WITH A POST AND 4 BEARING TREES.
50" DEAD FIR AT N88E, 57 LINKS (37.62 FEET)
4" CHERRY AT S28 1/4E, 33 LINKS (21.78 FEET)
4" FIR AT S72 1/2W, 17 LINKS (11.22 FEET)
50" FIR AT N24 1/4W, 18 LINKS (11.88 FEET)
THIS SURVEY FOUND A 4" X 4" DNR CONCRETE MONUMENT WITH STAMPED BRASS CAP AND THE FOLLOWING BEARING TREES:
50" FIR SNAG AT N89E, 37.60 FEET TO NEAR EDGE.
60" FIR AT N24W, 11.90 FEET TO VISIBLE SCRIBE.
IN 1968, DNR EMPLOYEE JERRY OLSON FOUND THE TWO FIR BEARING TREES AND SET THE CONCRETE MONUMENT WITH A MOUND OF STONE AROUND IT.
THE SURVEY IN BOOK 37 OF SURVEYS, PAGE 180 DID NOT FIND THIS CORNER.
THE FOLLOWING REFERENCES WERE NOTED:
4 RP'S
14" FIR AT N35E, 17.99 FEET TO ALUMINUM NAIL IN NORTHWEST SIDE.
13" HEMLOCK AT S39E, 19.91 FEET TO ALUMINUM NAIL IN SOUTHWEST SIDE.
10" HEMLOCK AT S90W, 3.79 FEET TO ALUMINUM NAIL IN SOUTHEAST SIDE.
DNR CARSONITE WITNESS POST AT WEST, 2 FEET.
FIELD BOOK 3049, PAGE 10

J22 WEST 1/16 CORNER ON THE SOUTH LINE OF SECTION 12

CALCULATED CORNER
ON 12-13-04 THIS SURVEY SET A 3/4" X 30" BREAKAWAY ALUMINUM ROD WITH STAMPED 3 1/2" DNR ALUMINUM CAP WITH MAGNET TO MARK THE CORNER POSITION. THE FOLLOWING REFERENCES WERE NOTED:
4 RP'S
DNR CARSONITE WITNESS POST AT NORTH, 2 FEET.
24" FIR AT N13E, 13.18 FEET TO ALUMINUM NAIL IN WEST SIDE.
21" FIR AT S56E, 11.09 FEET TO ALUMINUM NAIL IN NORTHEAST SIDE.
34" FIR AT S67W, 9.99 FEET TO ALUMINUM NAIL IN NORTH SIDE.
FIELD BOOK 3049, PAGE 21

J23 SOUTH 1/4 CORNER OF SECTION 12

CALCULATED CORNER
GLO HISTORY: SET BY GLO IN 1896 AND MARKED WITH A POST AND 2 BEARING TREES.
4" FIR AT N33W, 11 LINKS
6" FIR AT S26 1/2W, 53 LINKS
NO EVIDENCE OF THE ORIGINAL GLO SURVEY WAS FOUND.
ON 12-13-04 THIS SURVEY SET A DNR ALUMINUM MONUMENT WITH STAMPED ALUMINUM POST TO MARK THE CORNER POSITION. THE FOLLOWING REFERENCES WERE NOTED:
4 RP'S
13" FIR AT W8E, 10.77 FEET TO ALUMINUM NAIL IN WEST SIDE.
12" FIR AT N75E, 18.56 FEET TO ALUMINUM NAIL IN NORTHWEST SIDE.
19" FIR AT S56W, 7.37 FEET TO ALUMINUM NAIL IN NORTHWEST SIDE.
DNR CARSONITE WITNESS POST AT WEST, 1.5 FEET.
FIELD BOOK 3049, PAGE 19

J25 SOUTHEAST CORNER OF SECTION 12

ACCEPTED CORNER
GLO HISTORY: SET BY GLO IN 1892 AND MARKED WITH A POST AND 4 BEARING TREES.
16" DEAD LARCH AT N4730W, 24 LINKS (15.84 FEET)
30" DEAD LARCH AT N45E, 98 LINKS (64.68 FEET)
20" LARCH AT S71, 15E, 80 LINKS (52.80 FEET)
24" DEAD LARCH AT S6645W, 32 LINKS (21.12 FEET)
ON 9-28-04 THIS SURVEY FOUND THE FOLLOWING BEARING TREES:
16" NOBLE FIR SNAG AT N47W, 15.8 FEET. THIS SNAG HAS OLD AXE MARKS ON IT.
20" NOBLE FIR SNAG AT S71E, 52.8 FEET. THIS SNAG HAS OLD AXE MARKS ON IT.
FOUND REMAINS OF THE ORIGINAL POST AT THE CORNER LOCATION.
FOUND ROOT REMAINS AT GLO BEARING AND DISTANCE FOR THE NORTHEAST AND SOUTHWEST BEARING TREES.
THIS SURVEY SET A 3/4" X 30" BREAKAWAY ALUMINUM ROD WITH STAMPED 3 1/2" DNR ALUMINUM CAP WITH MAGNET TO REPLACE THE REMAINS OF THE ORIGINAL POST. THE FOLLOWING REFERENCES WERE NOTED:
4 RP'S
DNR CARSONITE WITNESS POST AT NORTH, 2 FEET.
13" NOBLE FIR AT N22E, 7.82 FEET TO ALUMINUM NAIL IN NORTHWEST SIDE.
13" NOBLE FIR AT S81E, 14.71 FEET TO ALUMINUM NAIL IN SOUTH SIDE.
16" NOBLE FIR AT S9W, 7.43 FEET TO ALUMINUM NAIL IN EAST SIDE.

14" NOBLE FIR AT N45W, 12.15 FEET TO ALUMINUM NAIL IN NORTHEAST SIDE.
THE CORNER FALLS ON A NORTH FACING SLOPE BELOW THE REAL STURGEON ROCK.
FIELD BOOK 3049, PAGE 6

L21 WEST 1/4 CORNER OF SECTION 13

ACCEPTED CORNER
GLO HISTORY: SET BY GLO IN 1896 AND MARKED WITH A POST AND 2 BEARING TREES.
36" FIR AT S22W, 10 LINKS (6.60 FEET)
24" FIR AT N62 1/2E, 20 LINKS (13.20 FEET)
IN 1965, DNR EMPLOYEE JERRY OLSON SET A 4" X 4" DNR CONCRETE MONUMENT WITH STAMPED BRASS CAP FROM 2 BEARING TREE STUMPS. HE NOTED THAT THE GLO CALL TO THE RIDGE TO THE NORTH IS 625 MEASURED VS 634 GLO AND THE GLO CALL TO THE CREEK TO THE SOUTH IS 712 MEASURED VS 726 GLO.
DNR RIGHT-OF-WAY PLATS DATED 1959 AND 1975 NOTE TWO BEARING TREES AT THIS CORNER.
THE SURVEY IN BOOK 37 OF SURVEYS AT PAGE 180 USED THIS MONUMENT.
NEAR THE END OF THIS DNR SURVEY, THE AREA IN WHICH THIS CORNER IS LOCATED BECAME COVERED BY A HEAVY LAYER OF SNOW AND IT WAS NOT POSSIBLE TO GET BACK TO REFERENCE THE CORNER. AN LOR WILL BE FILED LATE SPRING/EARLY SUMMER OF 2005.
THE CORNER WAS FOUND AND TIED ON 11-3-04.
FIELD BOOK 3049, PAGE 24

N23 SOUTH 1/4 CORNER OF SECTION 13

ACCEPTED CORNER
GLO HISTORY: SET BY GLO IN 1896 AND MARKED WITH A POST AND 2 BEARING TREES.
60" FIR AT S49W, 3 LINKS (1.98 FEET)
50" FIR AT N43 1/2E, 57 LINKS (37.62 FEET)
THE CORNER WAS SET AT 40.15 CHAINS WHILE RUNNING WEST ON TRUE LINE. AT 40.33 CHAINS A 4 LINK WIDE CREEK WAS NOTED. GLO DISTANCE FROM THE CORNER TO THE CREEK IS 11.9 FEET.
ON 10-11-04 THIS SURVEY FOUND THE FOLLOWING BEARING TREES:
60" FIR SNAG AT S49W, 1.98 FEET TO NEAR EDGE. NO MARKS.
REMAINS OF 50" FIR STUMP AT N43E, 37.62 TO APPARENT NEAR EDGE. NO MARKS.
THIS SURVEY SET A 3/4" X 30" BREAKAWAY ALUMINUM ROD WITH STAMPED 3 1/2" DNR ALUMINUM CAP WITH MAGNET TO MARK THE CORNER POSITION. IT WAS SET AT GLO DISTANCE AND BEARING FROM THE 60" FIR SNAG AND CHECKED TO THE OTHER BEARING TREE. THE CREEK THAT GLO CALLED IS 22 FEET WEST OF THE CORNER.
THE FOLLOWING REFERENCES WERE NOTED:
4 RP'S
27" GRAND FIR AT N17E, 20.00 FEET TO ALUMINUM NAIL IN WEST SIDE.
DNR CARSONITE WITNESS POST AT EAST, 2 FEET.
9" CHERRY AT S7E, 13.44 FEET TO ALUMINUM NAIL IN WEST SIDE.
7" CHERRY AT N19W, 6.74 FEET TO ALUMINUM NAIL IN NORTHEAST SIDE.
FIELD BOOK 3049, PAGE 2

94 CLARK COUNTY GPS

