

2004155719

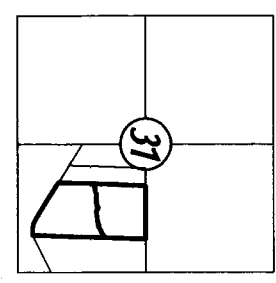
AMENDED RECORD OF SURVEY

IN THE SE 1/4 OF SECTION 31
T. 2 N, R. 5 E, WM.
SKAMANIA COUNTY, WASHINGTON
DECEMBER, 2004

S31, T2N, R5E, WM.

REASON FOR AMENDMENT

TO REMOVE THE INCORRECT L.C.R. REFERENCE FOR THE EAST 1/4 CORNER OF SECTION 31 AND THE FENCE CALL SHOWN IN DETAIL 1 AS SHOWN IN R.O.S. AS RECORDED UNDER A.F.N. 2004154470 AND ADD THE FENCE LING SOUTH OF NORTH PROPERTY LINE



LEGEND

- SET 5/8" x 24" IRON ROD WITH YELLOW PLASTIC CAP STAMPED "BESEDA 32248"
- ⊙ FOUND 5/8" IRON ROD WITH ALUMINUM CAP STAMPED "ALPHA ENGINEERING INC. 27230" AS SET IN R.O.S. BK. 3, PG. 50, TIED JULY, 2004
- FOUND AND HELD 2" IRON PIPE FILLED WITH CONCRETE IN CASE WITH COVER (UNLESS NOTED OTHERWISE)
- MONUMENT AS NOTED, TIED JULY, 2004
- x— BARBED WIRE FENCE
- () RECORD DATA
- [] BEARING AND DISTANCE ALONG FENCE LINE
- P.C. ORANGE PLASTIC CAP
- Y.P.C. YELLOW PLASTIC CAP
- R.O.S. RECORD OF SURVEY
- L.C.R. LAND CORNER RECORD
- S.P. SHORT PLAT
- A.F.N. AUDITOR'S FILE NUMBER

* BASIS OF BEARINGS

R.O.S. RECORDED UNDER AUDITOR'S FILE NUMBER 2004153722

DEED REFERENCE

STATUTORY WARRANTY DEED PATTON

CAPE HORN - SKYE SCHOOL DISTRICT No.15 BK. 45, PG. 171 (RECORDED: JUNE 3, 1958)

STATUTORY WARRANTY DEED HART

CAPE HORN - SKYE SCHOOL DISTRICT No.15 BK. 45, PG. 170 (RECORDED: JUNE 25, 1958)

PROCEDURE

(SEE NARRATIVE)

SURVEYOR'S CERTIFICATE

THIS MAP CORRECTLY REPRESENTS A SURVEY MADE BY ME OR UNDER MY DIRECTION IN CONFORMANCE WITH THE REQUIREMENTS OF THE SURVEY RECORDING ACT, AT THE REQUEST OF MACKAY & SPOSITO INC.

AUDITOR'S CERTIFICATE

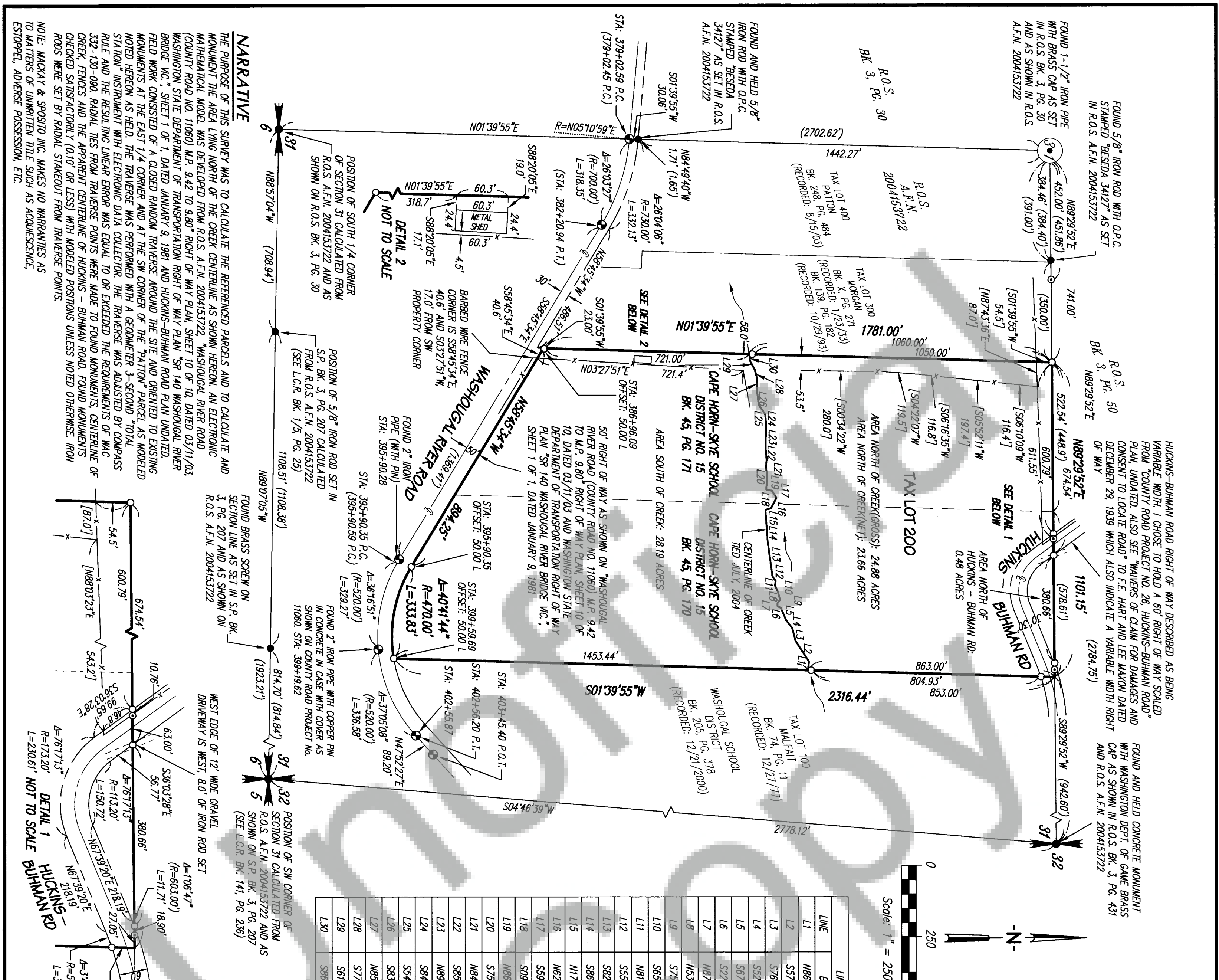
FILED FOR RECORD THIS 22nd DAY OF December, 2004, AT 4:21 P.M. UNDER AUDITOR'S FILE NUMBER 2004155719. AT THE REQUEST OF MACKAY & SPOSITO, INC.

Debra Steury
DEPUTY COUNTY AUDITOR

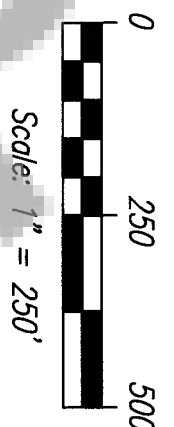
Mackay & Sposito, Inc.
ENGINEERS SURVEYORS PLANNERS

1325 SE TECH CENTER DRIVE, SUITE 140 VANCOUVER, WA 98683
(360) 895-3411 (503) 298-6726 PTLD FAX (360) 895-0833

CALC. BY: J.M.B. DRAWN BY: J.M.B. JOB NO.: 12774
CHECKED BY: J.M.Y./A.L.B. DWG. NAME: 12774RS2.DWG. SHEET 1 OF 1



LINE	BEARING	DISTANCE
L1	N86°00'00"W	31.00'
L2	S57°00'00"W	86.00'
L3	S78°00'00"W	46.00'
L4	S52°00'00"W	35.00'
L5	S67°00'00"W	48.00'
L6	S22°00'00"W	13.00'
L7	N87°00'00"W	11.00'
L8	N53°00'00"W	15.00'
L9	S75°00'00"W	28.00'
L10	S65°00'00"W	25.00'
L11	N81°00'00"W	16.00'
L12	S55°00'00"W	20.00'
L13	S82°00'00"W	122.00'
L14	S88°00'00"W	112.00'
L15	N17°00'00"W	21.00'
L16	N62°00'00"W	40.00'
L17	S75°00'00"W	30.00'
L18	S39°00'00"W	21.00'
L19	N88°00'00"W	56.00'
L20	S75°00'00"W	21.00'
L21	N84°00'00"W	28.00'
L22	S88°00'00"W	40.00'
L23	N89°00'00"W	90.00'
L24	S84°00'00"W	31.00'
L25	S84°00'00"W	38.00'
L26	S83°00'00"W	63.00'
L27	N85°00'00"W	27.00'
L28	S77°00'00"W	35.00'
L29	S81°00'00"W	37.57'
L30	S86°00'00"W	22.93'



NARRATIVE

THE PURPOSE OF THIS SURVEY WAS TO CALCULATE THE REFERENCED PARCELS AND TO CALCULATE AND MONUMENT THE AREA LYING NORTH OF THE CREEK CENTRIE LINE AS SHOWN HEREON. AN ELECTRONIC MATHEMATICAL MODEL WAS DEVELOPED FROM R.O.S. A.F.N. 2004153722, WASHOUGAL RIVER ROAD (COUNTY ROAD NO. 11080) M.P. 9.42 TO 9.80' RIGHT OF WAY PLAN, SHEET 10 OF 10, DATED 03/11/03, WASHINGTON STATE DEPARTMENT OF TRANSPORTATION RIGHT OF WAY PLAN "SR 140 WASHOUGAL RIVER BRIDGE VIC.", SHEET 1 OF 1, DATED JANUARY 9, 1981 AND HICKINS-BUHMAN ROAD PLAN UNDATED. FIELD WORK CONSISTED OF A CLOSED RANDOM TRAVERSE AROUND THE SITE AND ORIENTED TO EXISTING MONUMENTS AT THE EAST 1/4 CORNER AND AT THE SW CORNER OF THE "PATTON" PARCEL AS MODELED NOTED HEREON AS HELD. THE TRAVERSE WAS PERFORMED WITH A GEODIMETER 3-SECOND TOTAL STATION INSTRUMENT WITH ELECTRONIC DATA COLLECTOR. THE REVERSE WAS ADJUSTED BY COMPASS RULE AND THE RESULTING LINEAR ERROR WAS EQUAL TO OR EXCEEDED THE REQUIREMENTS OF WAC 332-130-080. RADIAL TIES FROM TRAVERSE POINTS WERE MADE TO FOUND MONUMENTS, CENTERLINE OF CREEK, FENCES AND THE APPARENT CENTERLINE OF HICKINS - BUHMAN ROAD. FOUND MONUMENTS CHECKED SATISFACTORILY (0.10' OR LESS) WITH MODELED POSITIONS UNLESS NOTED OTHERWISE. IRON RODS WERE SET BY RADIAL STAKEOUT FROM TRAVERSE POINTS.

NOTE: MACKAY & SPOSITO INC. MAKES NO WARRANTIES AS TO MATTERS OF UNWRITTEN TITLE SUCH AS ACQUISITION, ESTOPPEL, ADVERSE POSSESSION, ETC.