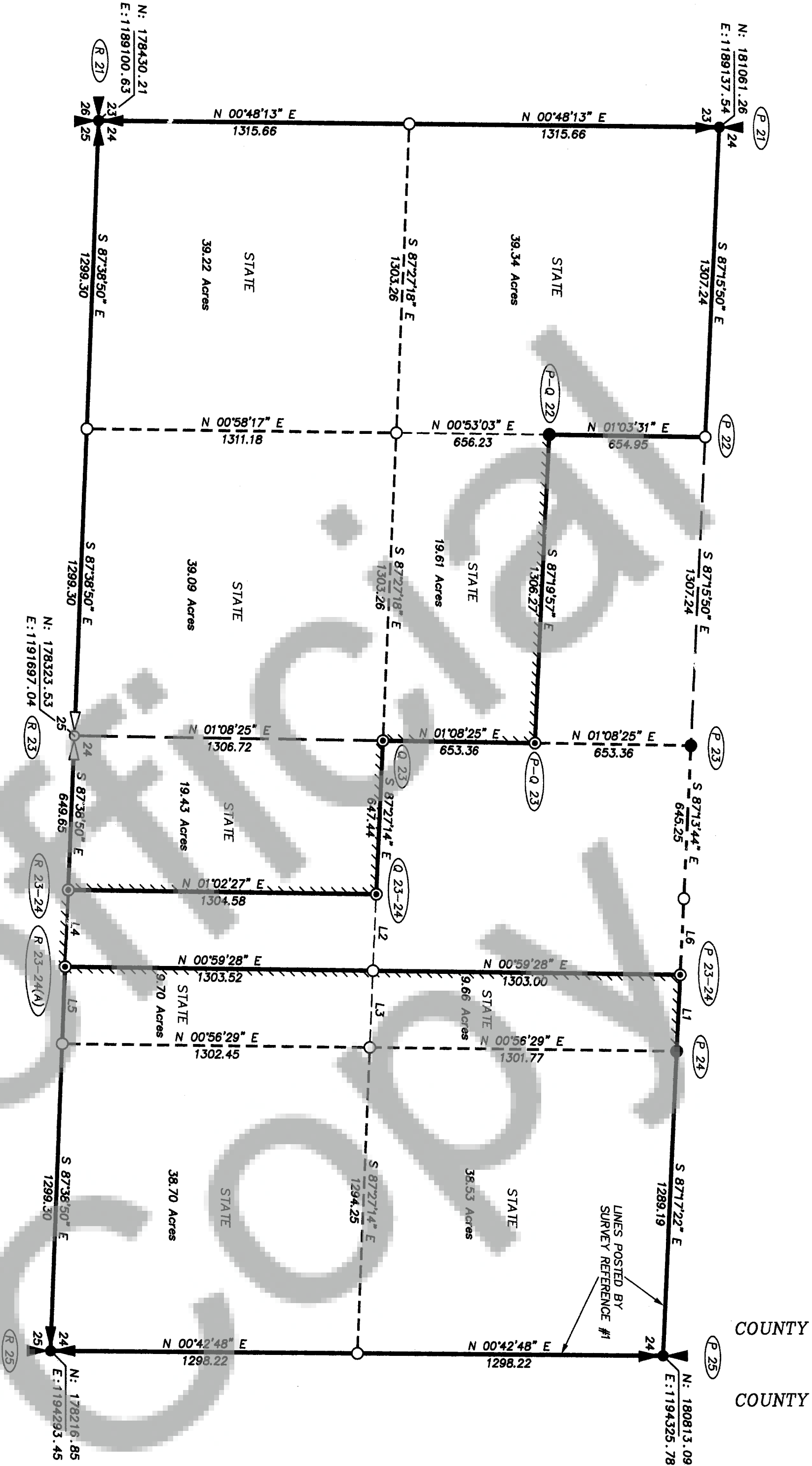
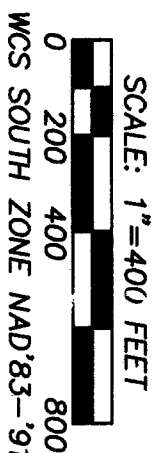
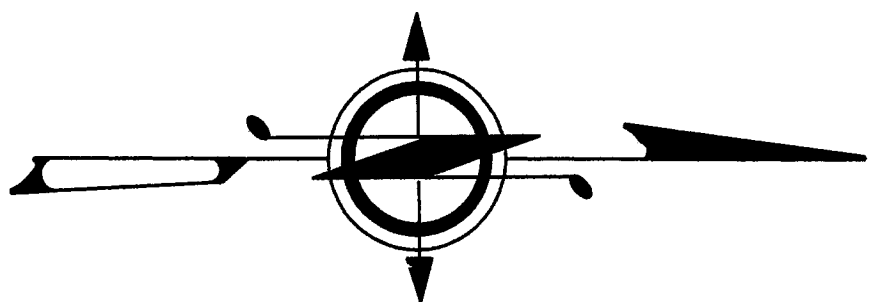


"COPPER" SURVEY  
SEE SHEET 2 FOR CORNER NOTES  
AND PROJECT GPS DIAGRAM

2004155531



LINE TABLE		
NO.	BEARING	DISTANCE
L1	S 87°13'44\"	322.62
L2	S 87°27'14\"	323.72
L3	S 87°27'14\"	323.72
L4	S 87°38'50\"	324.83
L5	S 87°38'50\"	324.83
L6	S 87°13'44\"	322.62

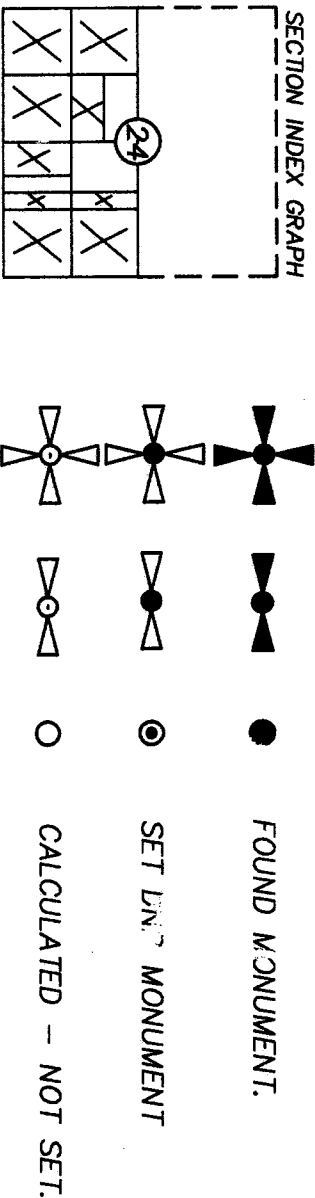


LEGEND

STANDARD DNR MONUMENTS ARE:  
2 3/8\" O.D. ALUM. ALLOY PIPE W/\"BREAKAWAY\" PLASTIC BASE.  
3 1/4\" DIA. ALUM. ALLOY CAP ATTACHED TO A 3/4\" FLUTED  
ALUM. ROD STAMPED WITH PROPER CORNER IDENTIFICATION  
PERMANENT VERTICALLY ORIENTED MAGNETS ARE INCLUDED  
IN THE MONUMENT.  
STANDARD DNR CAPS ARE:  
3 1/4\" DIA. ALUM. ALLOY DISKS WITH A VERTICALLY ORIENTED  
MAGNET AND STAMPED W/PROPER CORNER IDENTIFICATION.

////// INDICATES PROPERTY LINES POSTED WITH 6 FOOT  
TALL WHITE CARBONITE POSTS SET AT RANDOM INTERVALS.  
POSTS ARE WITHIN ONE FOOT OF THE ACTUAL LINES.

CORNER SYMBOLS:



COPPER2004.DWG

AUDITOR'S CERTIFICATE

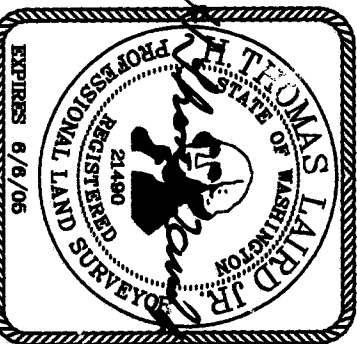
FILED FOR RECORD THIS 7<sup>th</sup> DAY OF December 2004  
AT 4:42 PM IN BOOK        OF SURVEY'S AT PAGE         
AT THE REQUEST OF THE WASHINGTON STATE DEPARTMENT OF  
NATURAL RESOURCES.

Michael Johnson COUNTY AUDITOR 2004155531  
AUDITOR'S FILE NUMBER

SURVEYOR'S CERTIFICATE

THIS MAP CORRECTLY REPRESENTS A SURVEY MADE BY ME OR  
UNDER MY DIRECTION IN CONFORMANCE WITH THE REQUIREMENTS  
OF THE SURVEY RECORDING ACT AT THE REQUEST OF THE  
WASHINGTON STATE DEPARTMENT OF NATURAL RESOURCES  
IN SEPTEMBER, 2004.

H. Thomas Laird, Jr. H. THOMAS LAIRD, JR., PLS. CERTIFICATE NUMBER 21490



A SURVEY IN SECTION 24

TOWNSHIP 4 NORTH, RANGE 4 EAST, W.M.

STATE OF WASHINGTON  
DEPARTMENT OF NATURAL RESOURCES

LAND SURVEY SECTION-P.O. BOX 47060  
OLYMPIA, WASHINGTON 98504-7060 (360)902-1206

FIELD BOOK: LAIRD, GRANAU, ST.  
CALC'D. BY: RAY & TAYLOR  
DRAWN BY: HAZLITT--4/06/04  
CHECKED BY: HAZLITT--7/06/04  
SHEET 1 OF 2  
F.M.# 1399A



"COPPER" PROJECT GPS DIAGRAM

THE CONTROL PORTION OF THIS SURVEY IS IN COMPLIANCE WITH THE FEDERAL GEODETIC CONTROL COMMITTEE'S "GEOMETRIC GEODETIC ACCURACY STANDARDS AND SPECIFICATIONS FOR USING GPS RELATIVE POSITIONING TECHNIQUES, VERSION 5.0, REFINISHED WITH CORRECTIONS AUGUST 1, 1988," FOR GROUP C, ORDER 1 SURVEYS. CONTROL ON THIS SURVEY WAS DONE USING FOUR TRIMBLE 5700 GPS FIELD SURVEY RECEIVERS.

THIS SURVEY WAS DONE BY FIELD TRAVERSE USING A TOPCON GTS-603AF 3 SECOND TOTAL STATION. TRAVERSES WERE CLOSED LOOPS OR CLOSED BETWEEN KNOWN POINTS. LINEAR AND ANGULAR CLOSURES EXCEEDED THOSE SHOWN IN WAC 332-130-.090 FOR LAMBERT GRID TRAVERSES.

BASIS OF BEARINGS AND DISTANCES:

WASHINGTON COORDINATE SYSTEM, SOUTH ZONE, N.A.D. '83/91 DERIVED FROM GLOBAL POSITIONING SYSTEM (GPS) TIES TO THE FOLLOWING CLARK COUNTY SURVEYOR'S OFFICE GPS STATIONS: (U.S. SURVEY FEET)

71	N	171773.605	E	1192593.019
72	N	167735.746	E	1181124.383
73	N	182901.249	E	1188534.056
75	N	163089.700	E	1195310.868

NEW POSITIONS DETERMINED BY THIS SURVEY USING GPS METHODS: (U.S. SURVEY FEET)

3104	N	164397.212	E	1191107.503
1	N	179993.473	E	1192365.845
3	N	177838.565	E	1188998.051
4	N	178059.745	E	1188552.074

CONVERGENCE: -1' 16" 42" AT CORNER P-23.

THE AREAS AND DISTANCES SHOWN ARE GRID. DIVIDE THE GRID DISTANCE BY THE COMBINED GRID FACTOR OF 0.99994141 TO OBTAIN THE GROUND DISTANCE. THE COMBINED GRID FACTOR IS DERIVED FROM AN ELEVATION FACTOR OF 0.99993645 AND A LATITUDE FACTOR OF 1.00000496 COMPUTED DURING STARNET ADJUSTMENT.

DESCRIPTION OF STATE OWNERSHIP:

THE S1/2 NE1/4 SW1/4, THE W1/2 SW1/4 SE1/4, THE SE1/4 SW1/4, THE W1/2 SW1/4, THE E1/2 SE1/4, AND THE E1/2 E1/2 W1/2 SE1/4, ALL IN SECTION 24, TOWNSHIP 4 NORTH, RANGE 4 EAST, W.M., CLARK COUNTY, WASHINGTON.

THE ABOVE LEGAL DESCRIPTION AND SUBSEQUENT SURVEY IS BASED ON A TITLE REPORT PREPARED BY THE WASHINGTON STATE DEPARTMENT OF NATURAL RESOURCES TITLE OFFICE DATED 4-30-2003.

NOTE: THE PURPOSE OF THIS SURVEY WAS TO MONUMENT THE CORNERS TO STATE PROPERTY AND TO POST THE PROPERTY LINES SHOWN. THE SECTION HAD BEEN PREVIOUSLY SUBDIVIDED BY HAGEDORN, INC., NOTED BELOW AS SURVEY REFERENCE NO. 1. THE CORNERS USED AND SET BY HAGEDORN WERE TIED, ANALYZED, AND ACCEPTED.

INDICATES THAT WHITE CARSONITE PROPERTY LINE POSTS WERE SET AT RANDOM INTERVALS ALONG THE NOTED SECTION OR SUB-DIVISIONAL LINES AND ARE WITHIN +/- ONE FOOT OF THE ACTUAL SECTION OR SUB-DIVISIONAL LINES.

CORNER NOTES:

SURVEY REFERENCES:  
THE FOLLOWING SURVEY IS REFERRED TO IN THE CORNER NOTES:  
SURVEY REFERENCE NO. 1: A SURVEY BY HAGEDORN, INC. IN 1982 FOR THE USDA FOREST SERVICE, RECORDED IN BOOK 15 OF SURVEYS AT PAGE 139.

P-21 WEST 1/4 CORNER OF SECTION 24

ACCEPTED CORNER  
ON 3-25-04 THIS SURVEY FOUND THE 2" STAMPED ALUMINUM CAP AS SET AND DESCRIBED ON SURVEY REFERENCE NO. 1.  
FIELD BOOK 3045, PAGE 26

P-22 CENTER WEST 1/16 CORNER OF SECTION 24

CALCULATED CORNER  
THIS SURVEY CALCULATED THE CORNER POSITION BUT DID NOT SET THE CORNER BECAUSE IT FALLS IN COPPER CREEK.  
THE SURVEY IN BOOK 3 OF SURVEYS, PAGE 7 SET A REBAR WITH PLASTIC CAP 100 FEET EAST OF THE CORNER AND ON LINE AS A WITNESS CORNER. WE FOUND THE REBAR AT 99.89 FEET EASTERLY AND ON LINE.  
THE SURVEY IN BOOK 18, PAGE 24 ALSO USED THE REBAR AS A WITNESS CORNER.  
NO ADDITIONAL REFERENCES WERE SET.  
FIELD BOOK 3045, PAGE 26

P-23 CENTER 1/4 CORNER OF SECTION 24

ACCEPTED CORNER  
ON 6-26-03 THIS SURVEY FOUND THE 2" STAMPED ALUMINUM CAP AS SET AND DESCRIBED ON SURVEY REFERENCE NO. 1.  
FIELD BOOK 3045, PAGE 4

P-23-24 CENTER EAST WEST EAST 1/256 CORNER, SECTION 24

CALCULATED CORNER  
ON 9-29-04 THIS SURVEY SET A DNR ALUMINUM MONUMENT WITH STAMPED ALUMINUM CAP TO MARK THE CORNER POSITION. THE FOLLOWING REFERENCES WERE NOTED:  
4 RPS  
12" ALDER AT S33E 7.55 FEET TO ALUMINUM NAIL IN NORTHEAST SIDE.  
DNR CARSONITE WITNESS POST AT S45W, 1 FOOT.  
12" ALDER AT S45W 13.28 FEET TO ALUMINUM NAIL IN SOUTHEAST SIDE.  
FIELD BOOK 3045, PAGE 39

P-24 CENTER EAST 1/16 CORNER OF SECTION 24

ACCEPTED CORNER  
ON 6-26-03 THIS SURVEY FOUND THE 2" STAMPED ALUMINUM CAP AS SET AND DESCRIBED ON SURVEY REFERENCE NO. 1.  
FIELD BOOK 3045, PAGE 4

P-25 EAST 1/4 SECTION 24

COPPERGPS.DWG

ACCEPTED CORNER

ON 8-4-03 THIS SURVEY FOUND THE 3" STAMPED ALUMINUM CAP AS SET AND DESCRIBED ON SURVEY REFERENCE NO. 1.  
FIELD BOOK 3045, PAGE 12

P-22 CENTER NORTH SOUTHWEST 1/64 CORNER OF SECTION 24

ACCEPTED CORNER  
ON 7-9-03 THIS SURVEY FOUND THE 1/2" REBAR WITH PLASTIC CAP AS SET AND DESCRIBED ON THE SURVEY IN BOOK 3 OF SURVEYS, PAGE 7.  
FIELD BOOK 3045, PAGE 9

P-23-24 CENTER NORTH SOUTH 1/64 CORNER OF SECTION 24

CALCULATED CORNER  
ON 4-21-04 THIS SURVEY SET A 3/4" X 30" BREAKAWAY ALUMINUM ROD WITH STAMPED 3 1/2" DNR ALUMINUM CAP WITH MAGNET TO MARK THE CORNER POSITION.  
A 1/2" REBAR WITH PLASTIC HAGEDORN CAP WAS FOUND AT S71W 10.22 FEET. THE SURVEY IN BOOK 3, PAGE 7 SHOWS THAT A REBAR WAS SET AT THIS CORNER. THE FOUND REBAR IS NOT ACCEPTED.  
THE FOLLOWING REFERENCES WERE NOTED:  
4 RPS  
DNR CARSONITE WITNESS POST AT EAST, 2 FEET.  
STEEL FENCE POST (FOUND) AT S4E, 4.90 FEET.  
24" FIR AT N9W 14.45 FEET TO ALUMINUM NAIL IN NORTH SIDE.  
21" FIR AT N9W 8.32 FEET TO ALUMINUM NAIL IN EAST SIDE.  
FIELD BOOK 3045, PAGE 29

P-23 CENTER SOUTH 1/16 CORNER OF SECTION 24

CALCULATED CORNER  
ON 4-22-04 THIS SURVEY SET A 3/4" X 30" BREAKAWAY ALUMINUM ROD WITH STAMPED 3 1/2" DNR ALUMINUM CAP WITH MAGNET TO MARK THE CORNER POSITION. THE FOLLOWING REFERENCES WERE NOTED:  
1/2" DNR ALUMINUM CAP WITH MAGNET TO MARK THE CORNER POSITION. THE FOLLOWING REFERENCES WERE NOTED:  
4 RPS  
14" ALDER AT N11E 7.70 FEET TO ALUMINUM NAIL IN EAST SIDE.  
DNR CARSONITE WITNESS POST AT EAST, 2 FEET.  
23" FIR AT S3E 17.62 FEET TO ALUMINUM NAIL IN EAST SIDE.  
STEEL FENCE POST (FOUND) AT WEST, 2.0 FEET.  
THE CORNER IS 30 FEET WEST OF AN OLD ROAD.  
FIELD BOOK 3045, PAGE 33

P-23-24 CENTER WEST SOUTHEAST 1/64 CORNER OF SECTION 24

CALCULATED CORNER  
ON 4-21-04 THIS SURVEY SET A 3/4" X 30" BREAKAWAY ALUMINUM ROD WITH STAMPED 3 1/2" DNR ALUMINUM CAP WITH MAGNET TO MARK THE CORNER POSITION. THE FOLLOWING REFERENCES WERE NOTED:  
4 RPS  
13" FIR STUMP AT N4E 4.96 FEET TO ALUMINUM NAIL IN WEST SIDE.  
16" FIR AT S16E 23.45 FEET TO ALUMINUM NAIL IN SOUTHWEST SIDE.  
STEEL FENCE POST (FOUND) AT S3W 1.40 FEET.  
DNR CARSONITE WITNESS POST AT WEST, 2 FEET.  
FIELD BOOK 3045, PAGE 31

P-21 SOUTHWEST CORNER OF SECTION 24

ACCEPTED CORNER  
ON 6-11-03 THIS SURVEY FOUND THE 4" X 4" DNR CONCRETE MONUMENT WITH STAMPED BRASS CAP AS DESCRIBED ON SURVEY REFERENCE NO. 1.  
THE FOLLOWING RECORDED SURVEYS ALSO USED THIS MONUMENT: BOOK 3 PAGE 7, BOOK 15 PAGE 159, BOOK 37 PAGE 129, BOOK 48 PAGE 30.  
FIELD BOOK 3045, PAGE 1

P-23 SOUTH 1/4 CORNER OF SECTION 24

CALCULATED CORNER  
THIS SURVEY CALCULATED THIS CORNER'S POSITION IN THE SAME MANNER AS SURVEY REFERENCE NO. 1. THE MONUMENT SET BY SURVEY REFERENCE NO. 1 WAS NOT TIED OR VISITED.

P-23-24 WEST EAST 1/64 CORNER ON SOUTH LINE OF SECTION 24

CALCULATED CORNER  
ON 9-27-04 THIS SURVEY SET A 3/4" X 30" BREAKAWAY ALUMINUM ROD WITH STAMPED 3 1/2" DNR ALUMINUM CAP WITH MAGNET TO MARK THE CORNER POSITION. THE FOLLOWING REFERENCES WERE NOTED:  
3 RPS  
9" TREATED FENCE CORNER POST WITH WIRE GOING NORTH AND EAST AT N42E 0.37 FEET TO TACK FACING CORNER.  
16" ALDER AT S30E 25.89 FEET TO ALUMINUM NAIL IN SOUTHWEST SIDE.  
24" FIR AT N53W 25.53 FEET TO ALUMINUM NAIL IN NORTHEAST SIDE.  
FIELD BOOK 3045, PAGE 37

P-23-24(A) EAST WEST E:1ST 1/256 CORNER ON SOUTH LINE OF SECTION 24

CALCULATED CORNER  
ON 9-27-04 THIS SURVEY SET A 3/4" X 30" BREAKAWAY ALUMINUM ROD WITH STAMPED 3 1/2" DNR ALUMINUM CAP WITH MAGNET TO MARK THE CORNER POSITION. THE CORNER IS ON THE NORTHWESTERLY SIDE OF AN OLD ROAD AND THE ROD WAS DRIVEN INTO A LARGE LOG BURIED IN THE FIL. THE FOLLOWING REFERENCES WERE NOTED:  
5 RPS  
DNR CARSONITE WITNESS POST AT NORTH, 4 FEET.  
11" ALDER AT N25E 9.94 FEET TO ALUMINUM NAIL IN SOUTHWEST SIDE.  
15" FIR AT N52E 36.76 FEET TO ALUMINUM NAIL IN NORTHWEST SIDE.  
14" ALDER AT S80E 19.68 FEET TO ALUMINUM NAIL IN SOUTH SIDE.  
9" TREATED FENCE POST (ANGLE IN FENCE) AT N73W 2.8 FEET TO TOP CENTER.  
FIELD BOOK 3045, PAGE 35

P-25 SOUTHEAST CORNER OF SECTION 24

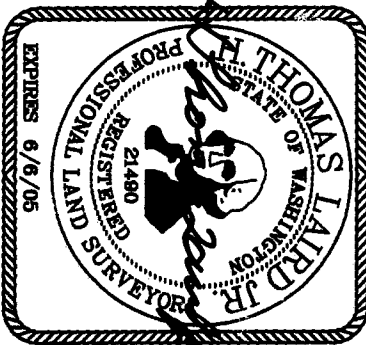
ACCEPTED CORNER  
ON 6-16-03 THIS SURVEY FOUND THE DEPARTMENT OF THE INTERIOR MONUMENT, A 2 1/2" IRON PIPE WITH STAMPED BRASS CAP, AS DESCRIBED ON SURVEY REFERENCE NO. 1.  
FIELD BOOK 3045, PAGE 3.

11-22-04

SURVEYOR'S CERTIFICATE

THIS MAP CORRECTLY REPRESENTS A SURVEY MADE BY ME OR UNDER MY DIRECTION IN CONFORMANCE WITH THE REQUIREMENTS OF THE SURVEY RECORPING ACT AT THE REQUEST OF THE WASHINGTON STATE DEPARTMENT OF NATURAL RESOURCES  
IN SEPTEMBER, 2004.

H. Thomas Laird, Jr., PLS  
CERTIFICATE NUMBER 21490

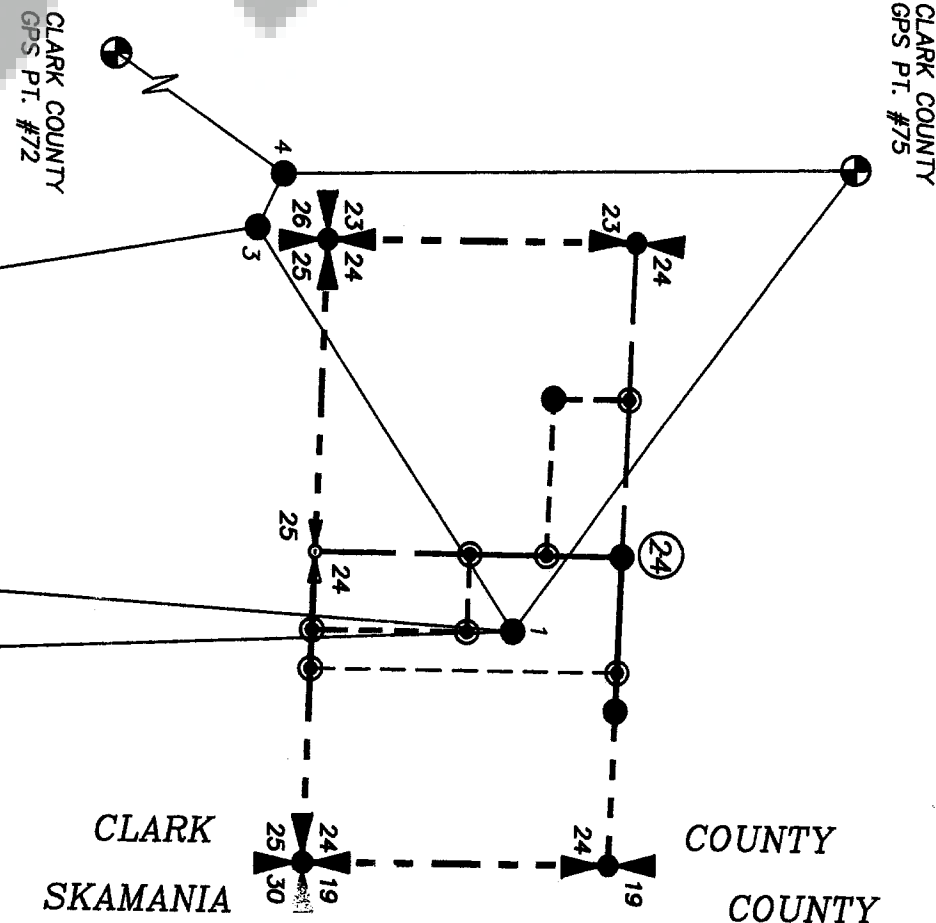
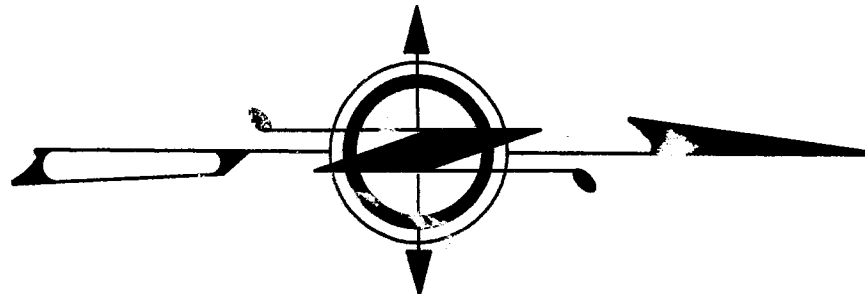


A SURVEY IN SECTION 24  
TOWNSHIP 4 NORTH, RANGE 4 EAST, W.M.

STATE OF WASHINGTON  
DEPARTMENT OF NATURAL RESOURCES

LAND SURVEY SECTION-P.O. BOX 47060  
OLYMPIA, WASHINGTON 98504-7060 (360)902-1206

SCALE: 1"=1600 FEET  
0 800 1600 3200  
WGS SOUTH ZONE NAD83-'91



FIELD CREW: LAIRD, GRANQUIST, RAY, & TAYLOR  
FIELD BOOK: 3045  
CUT/D: BY: HAZLITT--4/06/04  
DRAWN BY: HAZLITT--7/06/04  
CHECKED BY: LAIRD--10/26/04  
SHEET 2 OF 2  
F.M.# 1399A