

## CORNER NOTES FOR SIXTEENTH CORNERS

## (E 25) NORTH SIXTEENTH CORNER BETWEEN SECTIONS 1 AND 6.

CALCULATED SET CORNER.  
SET A STD. DNR CONC. MON. W/BRASS CAP AT THE CALCULATED THEORETICAL POSITION.  
REFERENCES:  
9" FIR AT S72°W - 14.91 FEET TO AN ALUM. NAIL IN BASE OF TREE FACING CORNER.  
9" FIR AT N4°E - 10.40 FEET TO AN ALUM. NAIL IN BASE OF TREE FACING CORNER.  
F.B. 603.15 PG.11 DATED 5/23/1979.

## (E 24) CENTER EAST SIXTEENTH CORNER SECTION 12.

CALCULATED SET CORNER.  
SET A STD. DNR CONC. MON. W/BRASS CAP AT THE CALCULATED THEORETICAL POSITION.  
REFERENCES:  
20" FIR AT S34°W - 26.59 FEET TO AN ALUM. NAIL IN BASE OF TREE FACING CORNER.  
20" FIR AT N82°E - 7.27 FEET TO AN ALUM. NAIL IN BASE OF TREE FACING CORNER.  
1" PIPE & CAP AT S58°W - 33.14 FEET.  
F.B. 603.14 PG.50 DATED 5/21/1979.

## (H 25) SOUTH SIXTEENTH CORNER BETWEEN SECTIONS 12 AND 7.

CALCULATED SET CORNER.  
SET A STD. DNR CONC. MON. W/BRASS CAP AT THE CALCULATED THEORETICAL POSITION.  
REFERENCES:  
12" FIR AT S71°W - 23.49 FEET TO AN ALUM. NAIL IN BASE OF TREE FACING CORNER.  
6" FIR STUMP AT N12°E - 17.47 FEET TO AN ALUM. NAIL IN BASE OF STUMP FACING CORNER.  
F.B. 603.15 PG.7 DATED 5/23/1979.

## (J 24) EAST SIXTEENTH CORNER BETWEEN SECTIONS 12 AND 13.

CALCULATED SET CORNER.  
SET A STD. DNR CONC. MON. W/BRASS CAP AT THE CALCULATED THEORETICAL POSITION.  
REFERENCES:  
24" FIR AT S54°W - 14.85 FEET TO AN ALUM. NAIL IN BASE OF TREE FACING CORNER.  
27" FIR AT N31°E - 16.31 FEET TO AN ALUM. NAIL IN BASE OF TREE FACING CORNER.  
26" FIR AT S14°E - 22.04 FEET TO AN ALUM. NAIL IN BASE OF TREE FACING CORNER.  
1" GALV. PIPE WITH PIPE CAP SET BY BROUGHTON LUMBER CO. AT S81°W - 1.99 FEET.  
F.B. 603.13 PG.51 DATED 11/15/1978.

## (G 1) CENTER WEST SIXTEENTH CORNER SECTION 7.

CALCULATED SET CORNER.  
SET A STD. DNR CONC. MON. W/BRASS CAP AT THE CALCULATED THEORETICAL POSITION.  
REFERENCES:  
6" FIR AT N24°W - 45.41 FEET TO AN ALUM. NAIL IN BASE OF TREE FACING CORNER.  
5" FIR AT N79°E - 44.31 FEET TO AN ALUM. NAIL IN BASE OF TREE FACING CORNER.  
F.B. 603.15 PG.13 DATED 5/24/1979.

## (H 1) SOUTHWEST SIXTEENTH CORNER SECTION 7.

CALCULATED SET CORNER.  
SET A STD. DNR CONC. MON. W/BRASS CAP AT THE CALCULATED THEORETICAL POSITION.  
REFERENCES:  
8" FIR AT N40°W - 12.47 FEET TO AN ALUM. NAIL IN BASE OF TREE FACING CORNER.  
7" FIR STUMP AT N4°E - 10.47 FEET TO AN ALUM. NAIL IN BASE OF STUMP FACING CORNER.  
10" FIR AT N71°E - 16.40 FEET TO AN ALUM. NAIL IN BASE OF TREE FACING CORNER.  
8" FIR AT S49°W - 4.51 FEET TO AN ALUM. NAIL IN BASE OF TREE FACING CORNER.  
F.B. 603.15 PG.3 DATED 5/22/1979.

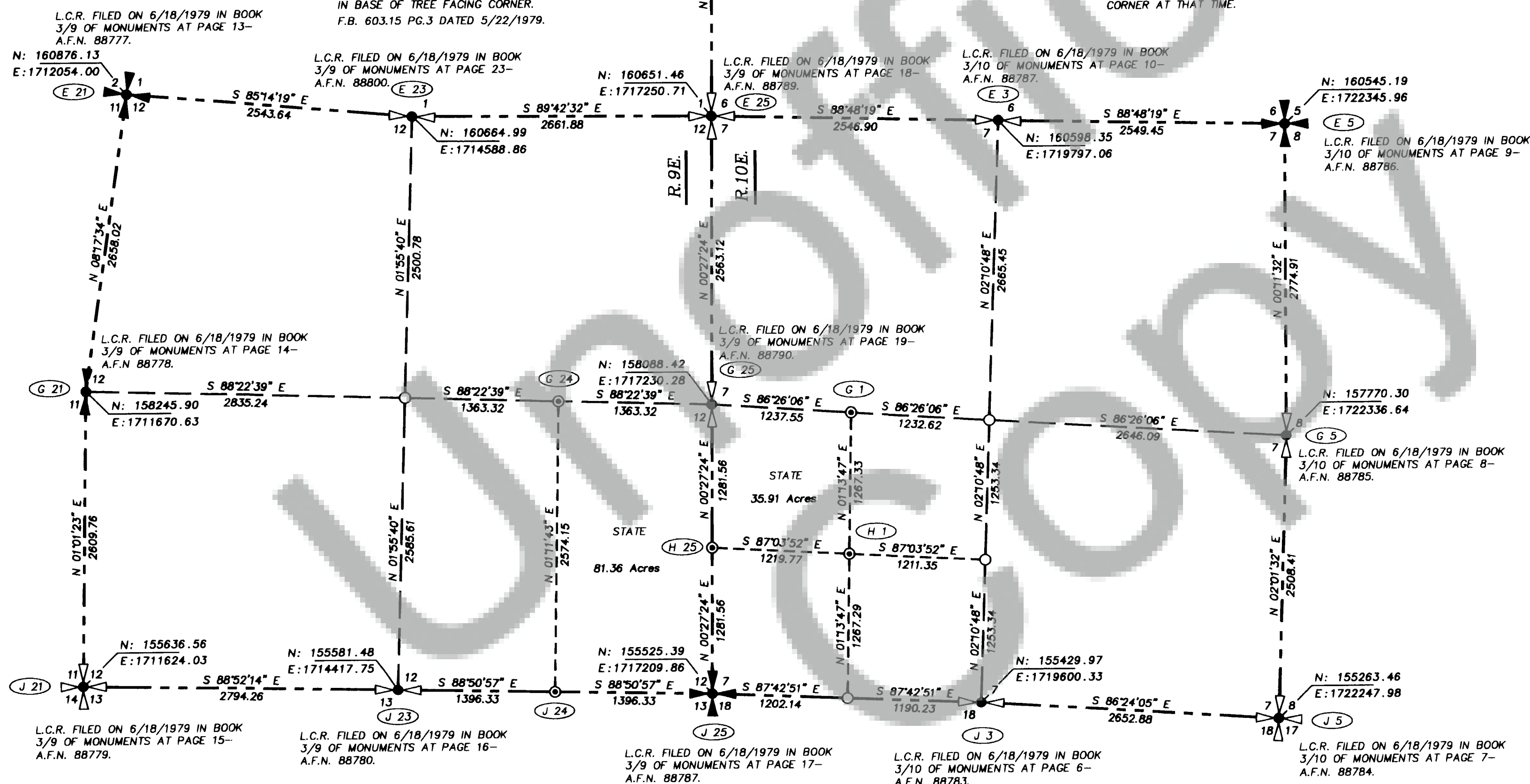
## AMENDMENT NOTE

THE PURPOSE OF THIS AMENDED SURVEY MAP IS TO SHOW CHANGES THAT WERE MADE TO A SURVEY FILED WITH THE SKAMANIA COUNTY ENGINEER'S OFFICE IN MARCH OF 1979 UNDER DNR FINAL MAP NUMBER 331. THE DNR SURVEY, FM 331, WAS SUBSEQUENTLY AMENDED PER NUMEROUS LAND CORNER RECORDS FILED WITH THE COUNTY AUDITOR. HOWEVER, AN AMENDED FINAL MAP WAS NEVER FILED WITH THE COUNTY ENGINEER. THE REASON FOR THE CHANGES TO THE SURVEY WAS THE ACCEPTANCE OF A FOUND MONUMENT AT THE CORNER TO SECTIONS 1, 6, 7 AND 12. THE ONE QUARTER CORNER HAD BEEN CALCULATED BY SINGLE PROPORTION AND WAS CHANGED TO A POSITION CALCULATED FROM A BROUGHTON LUMBER COMPANY MAP. NO ADDITIONAL FIELD WORK HAS BEEN PERFORMED AT THE TIME OF THE FILING OF THIS CURRENT SURVEY MAP AND ALL OF THE INFORMATION SHOWN ON THE MAP IS DERIVED FROM DATA IN THE ORIGINAL DNR SURVEY FILE AND FIELD BOOKS AND LAND CORNER RECORDS FILED IN 1979. TO ELIMINATE ANY FUTURE CONFUSION IT WAS DECIDED TO PRODUCE AND FILE THIS CURRENT AMENDED SURVEY MAP. NO FIELD WORK WAS PERFORMED AT THIS TIME. ALL INFORMATION SHOWN HEREON WAS VERIFIED BY CHECKING THRU THE EXISTING DNR LAND SURVEY SECTION RECORDS IN OLYMPIA, WASHINGTON.

THIS RECORD OF SURVEY MAP AMENDS DNR FINAL MAP NO.331 DATED MARCH 1979, SHEETS 1&2, THAT WAS FILED WITH THE SKAMANIA COUNTY ENGINEER IN MARCH OF 1979. THE 1979 D.N.R. SURVEY WAS NOT FILED WITH THE SKAMANIA COUNTY AUDITOR. LAND CORNER RECORDS (LCR'S) WERE FILED WITH THE SKAMANIA COUNTY AUDITOR ON JUNE 18, 1979 FOR ALL G.L.O. CORNERS RELEVANT TO THAT 1979 D.N.R. SURVEY. THE MARCH 1979 D.N.R. SURVEY SHOWS THE CORNER TO SECTION'S 1, 6, 7 & 12 TOWNSHIP 3 NORTH, RANGES 9&10 EAST, AS "CALC. COR.-SET DNR CONC. MON." WHEN SETTING THE MONUMENT AT THIS CALCULATED CORNER POSITION ON 8/8/78, AN IRON PIPE WAS FOUND AT S 4° E - 35.46' FROM THE SET DNR MONUMENT. IT WAS NOTED THAT THE PIPE HAD BEEN SET BY BROUGHTON LUMBER COMPANY "S CHAINS SOUTH FROM CREEK CALL". THE IRON PIPE WAS NOT ACCEPTED AS THE CORNER AT THAT TIME.

ADDITIONAL RESEARCH OF THE BROUGHTON LUMBER COMPANY RECORDS REVEALED THAT IN 1955, JACK ROTSKY FOUND THE S.W. B.T. STUMP WITH A FACE BUT NO VISIBLE SCRIBING. IN 1965, THE BROUGHTON LUMBER COMPANY ENGINEER FOUND ROTTED REMAINS OF THE S.W. & N.W. B.T.'S. BECAUSE OF THESE FACTS, THE DECISION WAS MADE IN APRIL OF 1979 TO ACCEPT THE BROUGHTON LUMBER COMPANY PIPE AS THE SECTION CORNER. IT WAS REPLACED WITH A STD. DNR CONC. MON. WITH BRASS CAP ON APRIL 18, 1979.

AFTER ACCEPTING THE BROUGHTON LUMBER COMPANY PIPE, ALL AFFECTED CALCULATED CORNERS IN SECTION'S 7&12 WERE RE-CALCULATED. THE 1/4 CORNER BETWEEN SECTION'S 1&6 WAS ALSO RE-CALCULATED. DNR MONUMENTS THAT HAD BEEN SET AT THE PREVIOUSLY CALCULATED POSITIONS WERE REMOVED FROM THE GROUND AND SET AT THE NEW CALCULATED POSITIONS. LCR'S WERE FILED WITH THE SKAMANIA COUNTY AUDITOR ON JUNE 18, 1979 FOR ALL SECTION CORNERS AND 1/4 CORNERS SHOWN ON THE MARCH 1979 DNR FINAL MAP NO. 331. HOWEVER, DNR FINAL MAP NO. 331 WAS NEITHER CORRECTED OR RE-FILED WITH THE SKAMANIA COUNTY ENGINEER IN 1979.



SCALE: 1"=800 FEET  
0 400 800 1600  
WCS SOUTH ZONE NAD'27

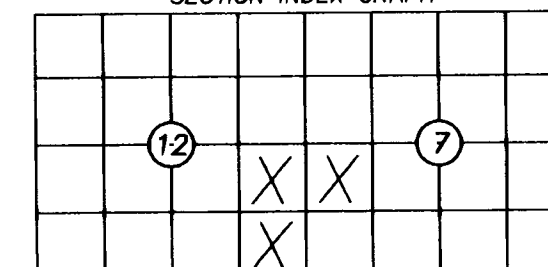
## LEGEND

STANDARD DNR CONCRETE MONUMENTS ARE:  
3" DIAMETER WITH BRASS CAP STAMPED WITH PROPER CORNER IDENTIFICATION.

## CORNER SYMBOLS:

- FOUND MONUMENT.
- SET STANDARD DNR CONC. MON. WITH BRASS CAP
- CALCULATED - NOT SET.

## SECTION INDEX GRAPH



## AUDITOR'S CERTIFICATE

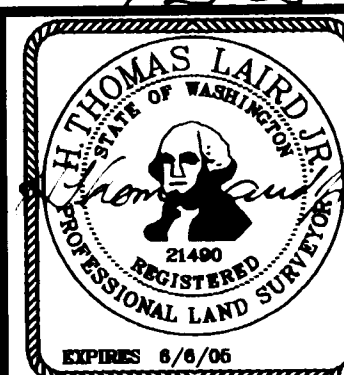
FILED FOR RECORD THIS 25<sup>th</sup> DAY OF September, 2003  
AT 11:55 AM. IN BOOK 3 OF SURVEYS AT PAGE 473  
AT THE REQUEST OF THE WASHINGTON STATE DEPARTMENT OF  
NATURAL RESOURCES.

J. Michael Harrison by P. Lawry 150425  
SKAMANIA COUNTY AUDITOR AUDITOR'S FILE NUMBER

## SURVEYOR'S CERTIFICATE

THIS MAP CORRECTLY REPRESENTS A SURVEY MADE BY ME OR  
UNDER MY DIRECTION IN CONFORMANCE WITH THE REQUIREMENTS  
OF THE SURVEY RECORDING ACT AT THE REQUEST OF THE  
WASHINGTON STATE DEPARTMENT OF NATURAL RESOURCES  
IN SEPTEMBER, 2003.

H. Thomas Laird, Jr., PLS 21490  
CERTIFICATE NUMBER



AN AMENDED SURVEY IN SECTION 12 T.3N., R.9E.  
AND SECTION 7 T.3N., R.10E., W.M.

STATE OF WASHINGTON  
DEPARTMENT OF NATURAL RESOURCES

LAND SURVEY SECTION-P.O. BOX 47060  
OLYMPIA, WASHINGTON 98504-7060 (360)902-1206

FIELD CREW: LAIRD, SHOPE, GORDON  
ENGELHARD & BARCLAY  
FIELD BOOK: 603.12, .13, .14 & .15  
CALC'D. BY: WINNER & OAKES--1979  
CALC'S. CHECKED: HAZLITT--9/08/2003  
DRAWN BY: HAZLITT--9/15/2003  
CHECKED BY: J. LAIRD--9/17/2003  
SHEET 1 OF 1  
F.M.# 1375