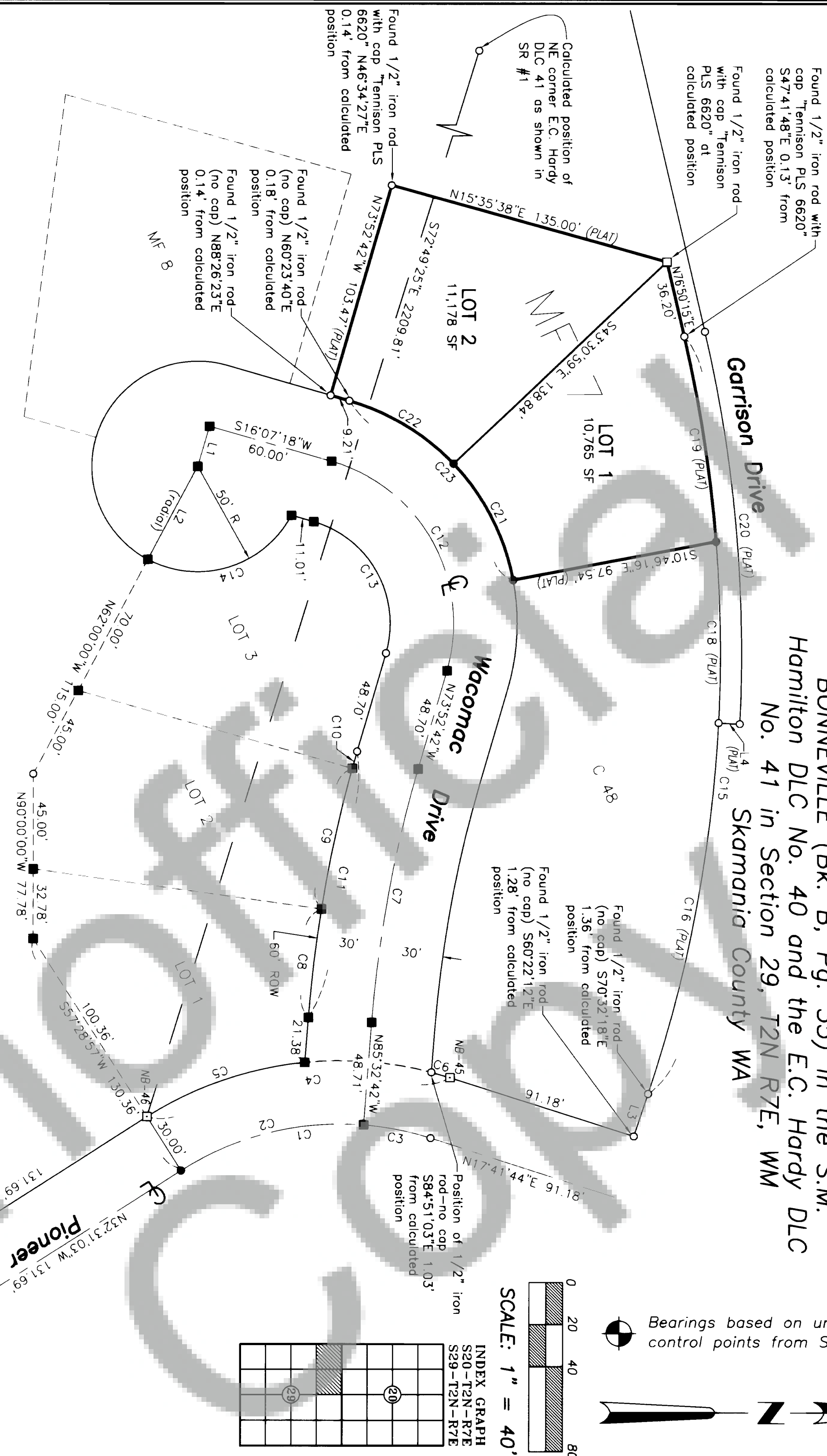
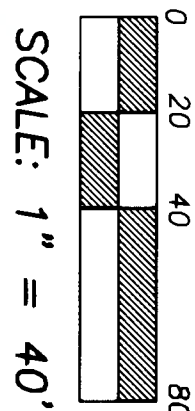


MF 7 Wacomac Re-Plat

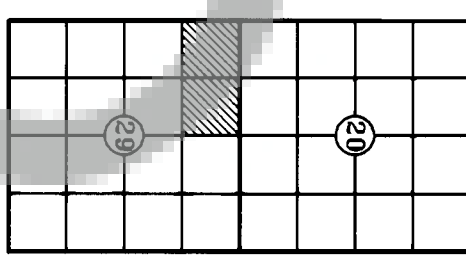
of lot MF 7 of BLOCK 10 of the THIRD
ADDITION TO THE PLATS OF RECORDED NORTH
BONNEVILLE (Bk. B, Pg. 35) in the S.M.
Hamilton DLC No. 40 and the E.C. Hardy DLC
No. 41 in Section 29, T2N R7E, WM



Bearings based on uncovered
control points from SR #1



INDEX GRAPH
S20-T2N-R7E
S29-T2N-R7E



CURVE	CHORD BRG	CHORD	RADIUS	DELTA	ARC
C1	S07°24.39'E	118.80'	140.00'	50°12.47"	122.69'
C2	S14°01'53"E	88.78'	140.00'	36°58'19"	90.34'
C3	S11°04.30'W	32.28'	140.00'	1°31.428"	32.35'
C4	S07°24.39'E	144.26'	170.00'	50°12.47"	148.99'
C5	S19°06.49'E	9.13'	170.00'	26°48'28"	79.54'
C6	S16°09.26'W	9.13'	170.00'	3°04.36"	9.13'
C7	S79°42.42'E	121.96'	600.00'	1°14.00'	122.17'
C8	S83°11'07"E	51.88'	630.00'	4°43.10"	51.89'
C9	S77°44'00"E	67.97'	630.00'	6°11'04"	68.00'
C10	S74°15.35'E	8.39'	630.00'	0°45.46"	8.39'
C11	S79°42.42'E	128.06'	630.00'	1°14.00'	128.28'
C12	S61°07.18'W	113.14'	80.00'	90°00.00"	125.66'
C13	S61°07.18'W	70.71'	50.00'	90°00.00"	78.54'
C14	N17°10.14'W	70.92'	50.00'	90°20.29"	78.84'
C15	N87°21.29'W	359.25'	660.00'	31°35.09"	353.84'
C16	N79°21'30'W	178.99'	660.00'	15°35.12"	179.55'
C17	N87°21.29'W	359.25'	660.00'	31°35.09"	353.84'
C18	S89°07.40'W	85.66'	660.00'	7°26.29"	85.72'
C19	S81°07.41'W	98.49'	660.00'	8°33.28"	98.58'
C20	S84°50.55'W	186.48'	670.00'	15°59.57"	187.09'
C21	S62°51.25'W	62.02'	110.00'	32°44.49"	62.87'
C22	S31°18.09'W	57.61'	110.00'	30°21.43"	58.29'
C23	S47°40.34'W	115.13'	110.00'	63°06.31"	121.16'

LINE	BEARING	LENGTH
L1	S73°52.42'E	20.00'
L2	S62°00.00'E	50.00'
L3	N71°33.54'W	21.21'
L4	N02°50.54'E	10.00'

NOTE:

NO ORIGINAL PLAT CORNERS WERE SET
EXCEPT FOR THE NB CORNERS ON
PIONEER DRIVE BY CORPS OF ENGINEERS.
THIS SURVEY CALCULATED PLAT CORNERS
FROM ORIGINAL NB MONUMENTS.

SURVEY REFERENCES:

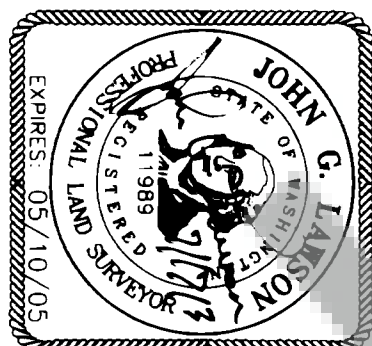
1. Third Addition To The Plats of
Relocated North Bonneville, Block 10
Book B Page 35
2. Lawson Short Plat: Book T, Page 115

Field ties were performed using a 1
second instrument. Traverse met the
minimum standard designed in WAC
332-130-090 and was balanced using
the compass rule adjustment.
Monuments were tied on 06-05-03
unless otherwise noted.

LEGEND

- Set 1/2"x 24" iron rod with
yellow plastic cap stamped
"LAWSON 11989"
- Found monument as noted
- Position of 1/2" iron rod
with yellow plastic cap
stamped "LAWSON 11989"
as set in SR #2
- Position of concrete
monument with Corp of
Engineers brass cap as
set in SR #1 (held)
- Calculated point (not set)
- Right of way
- SR Survey reference
- YPC Yellow plastic cap
- NB North Bonneville

CALCULATED BY: MAW	DRAWN BY: MOB	FILE NO: G2902NOTE
CHECKED BY: JGL	JOB NO: 03-053	SHEET 1 OF 1



LJS
LAWSON LAND SERVICES INC.
113 South Parkway Ave.
Battie Ground, WA 98604
Phone (360) 687-0500

I, General Partner of the of the land contained in this Short
Plat hereby declare and certify that I have legal authority to
Short Plat the described parcel and that this Short Plat has
been made with our free consent and in accordance with
our desires and do hereby dedicate to the public forever the
street as shown.

William A. Behrens 7-18-2003
Date
General Partner
LGR Limited Partnership

STATE OF WASHINGTON } ss.
COUNTY OF Tully

On this 18th day of July, 2003, before me,
the undersigned, a notary public in and for the State
of Washington, duly commissioned and sworn,
personally appeared William A. Behrens, to me
personally known (or proven on the basis of
satisfactory evidence) to be a **General Partner of LGR
Limited Partnership**, the limited partnership that
executed the within and foregoing instrument, and
acknowledged said instrument to be the free and
voluntary act and deed of said partnership for the
uses and purposes therein mentioned, and on oath
stated that William A. Behrens was authorized to
execute said instrument and that the seal affixed, if
any, is the corporate seal of said limited partnership.

Given under my hand and official seal this 18th of
July 2003

(Signed) Chris Block
My appointment expires 4/1/2006



City water and sewer utilities are available to the lots in
this Short Plat

Paul J. Hays 8-11-03
Public Utilities Manager Date

All taxes and assessments on property involved with this
Short Plat have been paid, discharged or satisfied thru 2003
02-07-29-2-2-2003-00
Vickie Clelland 8-13-2003
Skamania County Treasurer Date

This Short Plat conforms with City regulations and is
approved subject to any special conditions inscribed
hereon and to recording in the Skamania County
Auditor's office

John A. Kirk 8-11-03
Mayor, City of North Bonneville Date

Maureen Starn 8-11-03
Attest City Clerk Date

Surveyor's Certificate

I, John G. Lawson, registered as a Professional Land
Surveyor by the State of Washington, certify this plat is
based on an actual survey of the land described herein,
conducted by me or under my supervision, during the
period of June 2003; that the distances, courses and
angles are shown thereon correctly; and monuments other
than those monuments approved for setting at a later date,
have been set and lot corners staked on the ground as
depicted on the plat.

John G. Lawson 7/17/03
Date
JOHN G. LAWSON, P.E., PLS

Auditor's Certificate

Filed for record this 13th day of August, 2003,
at 9:09 AM in Book T at page 116
at the request of City of N. Bonneville
G. Michael Lawson by Deborah 8/13/03
County Auditor Date