

0' 10' 20' 30' 60'  
SCALE IN FEET

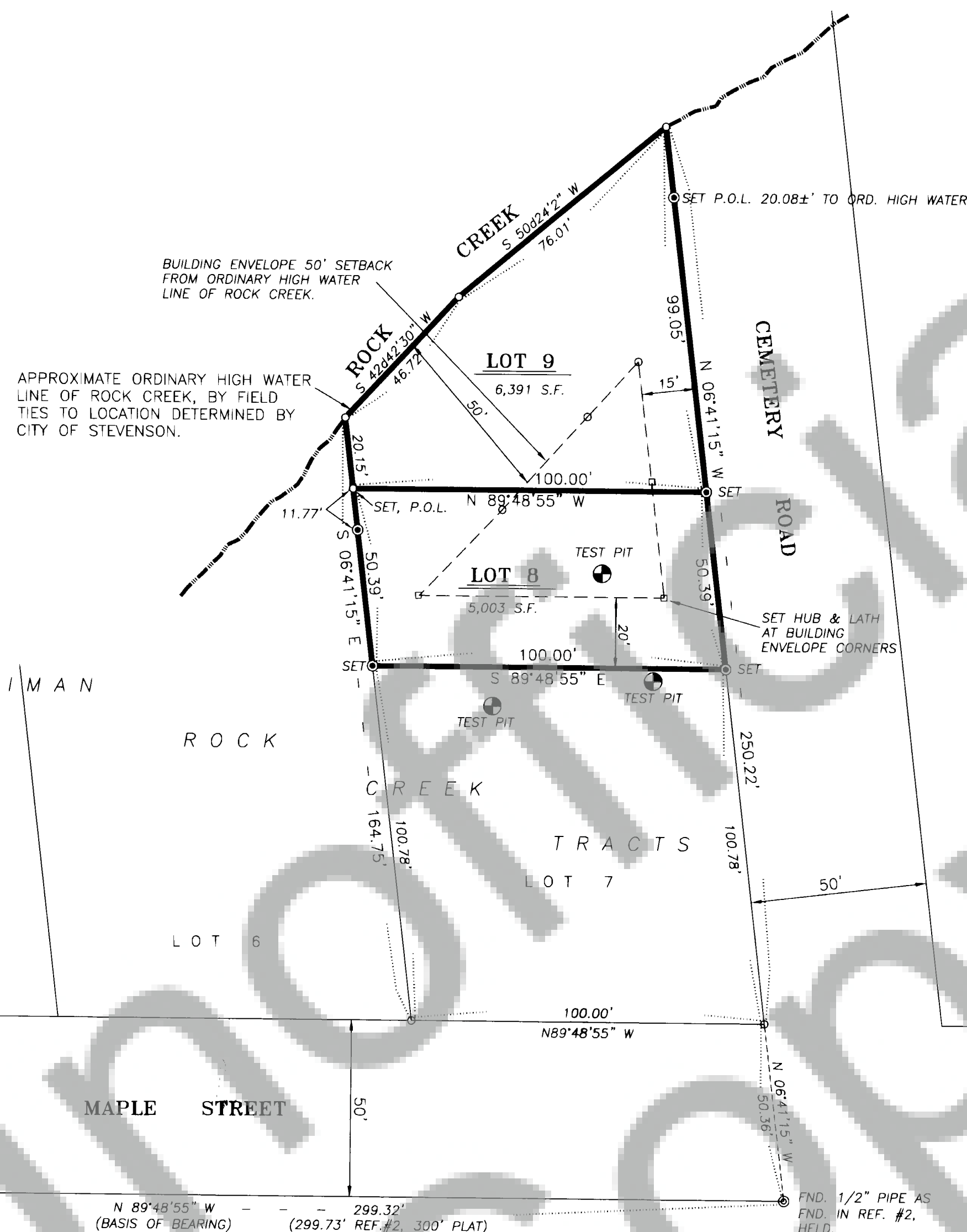
### NOTES:

BEARINGS BASED ON MONUMENTS FOUND FROM REFERENCE NO. 2 ON THE SOUTH LINE OF MAPLE STREET.

### LEGEND:

- SET 5/8" X 30" REBAR WITH YELLOW PLASTIC CAP, "PLS #35092"
- ⊙ FOUND MONUMENTS, AS NOTED.
- CALCULATED CORNERS, NOT SET.
- SET HUB & LATH.
- SET P.K. NAIL OR AS NOTED.
- ◆ SET BRASS SCREW AND WASHER, "PLS #35092"
- x— EXISTING FENCE LINE.

FND. 5/8" REBAR PER REF. #2, HELD FOR LINE.  
REF. #2  
(N 64° 07' 15" W - 100.17')  
(N 64° 07' 15" W - 100.17')  
FND. 5/8" REBAR PER REF. #2,  
PER REF. #2,



### NARRATIVE:

THE PURPOSE OF THIS SURVEY WAS TO MONUMENT THE EXTERIOR BOUNDARIES OF LOTS 8 AND 9 OF THE IMAN ROCK CREEK TRACTS. IN THE FIELD, MONUMENTS WERE FOUND FROM THE ORIGINAL PLAT AND SURVEY REFERENCE #2, AS SHOWN ON THE SURVEY, ON THE SOUTH LINE OF MAPLE STREET. THESE MONUMENTS WERE HELD AS FOUND AND UTILIZED AS THE BASIS OF BEARING FOR THIS SURVEY. FROM THE MONUMENT FOUND AT THE NORTHEAST CORNER OF LOT 1, AND UTILIZING THE BEARINGS FROM SURVEY REFERENCE #2 FOR THE SOUTH LINE OF MAPLE STREET AND THE WEST LINE OF CEMETERY ROAD, THE SUBJECT LOTS WERE LAID OUT AT FULL PLAT DIMENSION. ORIENTATION TO SURVEY REFERENCE #2 WAS MADE BY RANDOM TRAVERSE THROUGH THE PROJECT, INCLUDING TIES TO MONUMENTS FROM BOTH SURVEY REFERENCES. THIS TRAVERSE MEETS THE REQUIREMENTS OF WAC 332-130-090. FIELD EQUIPMENT USED WAS A 1.5 SECOND TOTAL STATION INSTRUMENT WITH ELECTRONIC DISTANCE METER AND ELECTRONIC DATA COLLECTOR.

MONUMENTS WERE SET AT LOT CORNERS AND ON THE LOT LINES, AS SHOWN ON THE SURVEY. SET MONUMENTS ARE 5/8" X 30" REBAR WITH YELLOW PLASTIC CAP INSCRIBED "B BESEDA LS 35092".

### REFERENCES:

- 1) PLAT OF IMAN ROCK CREEK TRACTS BY CLARK ELDRIDGE, P.E. SEPT. 1963, VOL. "A" OF PLATS, PG. 118
- 2) SURVEY OF LOT 4, IMAN ROCK CREEK TRACTS BY TRANTOW SURVEYING, INC. JULY, 1992 BOOK 3 OF SURVEYS, PG. 96.

### NOTES:

#### RELATIVE ACCURACY:

THIS SURVEY WAS CLOSED TRAVERSE WITH A MAXIMUM RELATIVE ERROR OF 1 PART IN 20,000.

#### EQUIPMENT:

LEICA T1600, 0°00'01.5" THEODOLITE AND LEICA DI-2000 ELECTRONIC DISTANCE MEASURING UNIT.

#### PROCEEDING:

CLOSED FIELD TRAVERSE USING DOUBLED ANGLE MEASUREMENT AND AVERAGE OF DISTANCE READING.

### AUDITOR'S CERTIFICATE:

FILED FOR RECORD THIS 30<sup>th</sup> DAY OF May, 2003, AT 9:45 A.M. IN BOOK 3 AT PAGE 461 AT THE

REQUEST OF BENJAMIN B. BESEDA,  
REGISTERED LAND SURVEYOR #35092,

*Michael Harrison by P. Lavy*  
COUNTY AUDITOR  
Deputy

### SURVEYOR'S CERTIFICATE:

THIS MAP CORRECTLY REPRESENTS A SURVEY MADE BY ME OR UNDER MY DIRECTION IN CONFORMANCE WITH THE REQUIREMENTS OF THE SURVEY RECORDING ACT AT THE REQUEST OF PAT AND JERRY DOBLIE, IN MAY, 2003.

B.B. Beseda  
BENJAMIN B. BESEDA,  
REGISTERED LAND SURVEYOR, #35092,



Date	No.	Revisions	By	App.
<b>SURVEY OF LOTS 8 AND 9, THE IMAN ROCK CREEK TRACTS FOR PAT AND JERRY DOBLIE</b> IN THE SE.1/4, SECTION 35, TWP.3 N., RANGE 7 E. W.M. CITY OF STEVENSON, SKAMANIA COUNTY, WASHINGTON				
<b>TENNESON ENGINEERING CORP.</b> CONSULTING ENGINEERS 409 LINCOLN STREET THE DALLES, OREGON 97058 541-296-9177 FAX 541-296-6657				
Survey B.R.H.	Calculation B.B.B.	Design B.B.B.	Date 5/27/2003	Scale 1"=30'
Drawn S.D.H.	DWG. No. 10789	Checked & App. B.B.B.	Work Order No. 10789	Sheet 1 of 1