

JOHNSON WATERLINE SURVEY

in the SW 1/4 NW 1/4 and
the NW 1/4 SW 1/4 of
SECTION 2, T1N, R5E, W.M.
SKAMANIA COUNTY, WA.



BEARINGS ARE NAD 83/91
(SEE NOTE 1)

0 200 400 800
SCALE 1"=400'

LEGEND

- MONUMENT AS SHOWN (TIED JUNE-OCTOBER, 2002, IF SHOWN WITH COORDINATES)
- ⊙ SET 2 1/4" ALUMINUM PIPE WITH 3 1/4" USFS EMBOSSED ALUMINUM CAP STAMPED AS SHOWN ("ALUMON")

R.O.S. = RECORD OF SURVEY

SP = SHORT PLAT

() RECORD DATA FROM SP 3-91

LCR = LAND CORNER RECORD

GPS = GLOBAL POSITIONING SYSTEM

USFS = UNITED STATES FOREST SERVICE

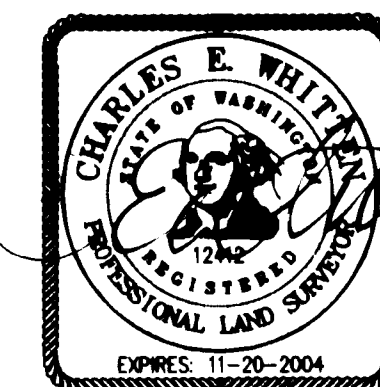
GLO = GENERAL LAND OFFICE

W.D.O.T. = WASHINGTON DEPARTMENT OF TRANSPORTATION

R.P. = REFERENCE POINTS ARE 5/8" IRON RODS WITH YELLOW PLASTIC CAP STAMPED "HAGEDORN, INC." SET APPROXIMATELY ONE FOOT IN FRONT OF THE TREE OR OBJECT NOTED. (TREE USED ONLY TO NAIL REFERENCE TAG TO).

SURVEYOR'S CERTIFICATE

This map correctly represents a survey made by me or under my direction in conformance with the requirements of the Survey Recording Act at the request of USDA FOREST SERVICE in NOVEMBER, 2002



04-28-03
AUDITOR'S CERTIFICATE

Filed for record this 29th day of April, 20 03
at 8:24 a.m. in Book 3 of surveys at Page 456 at the request of Hagedorn, Inc.

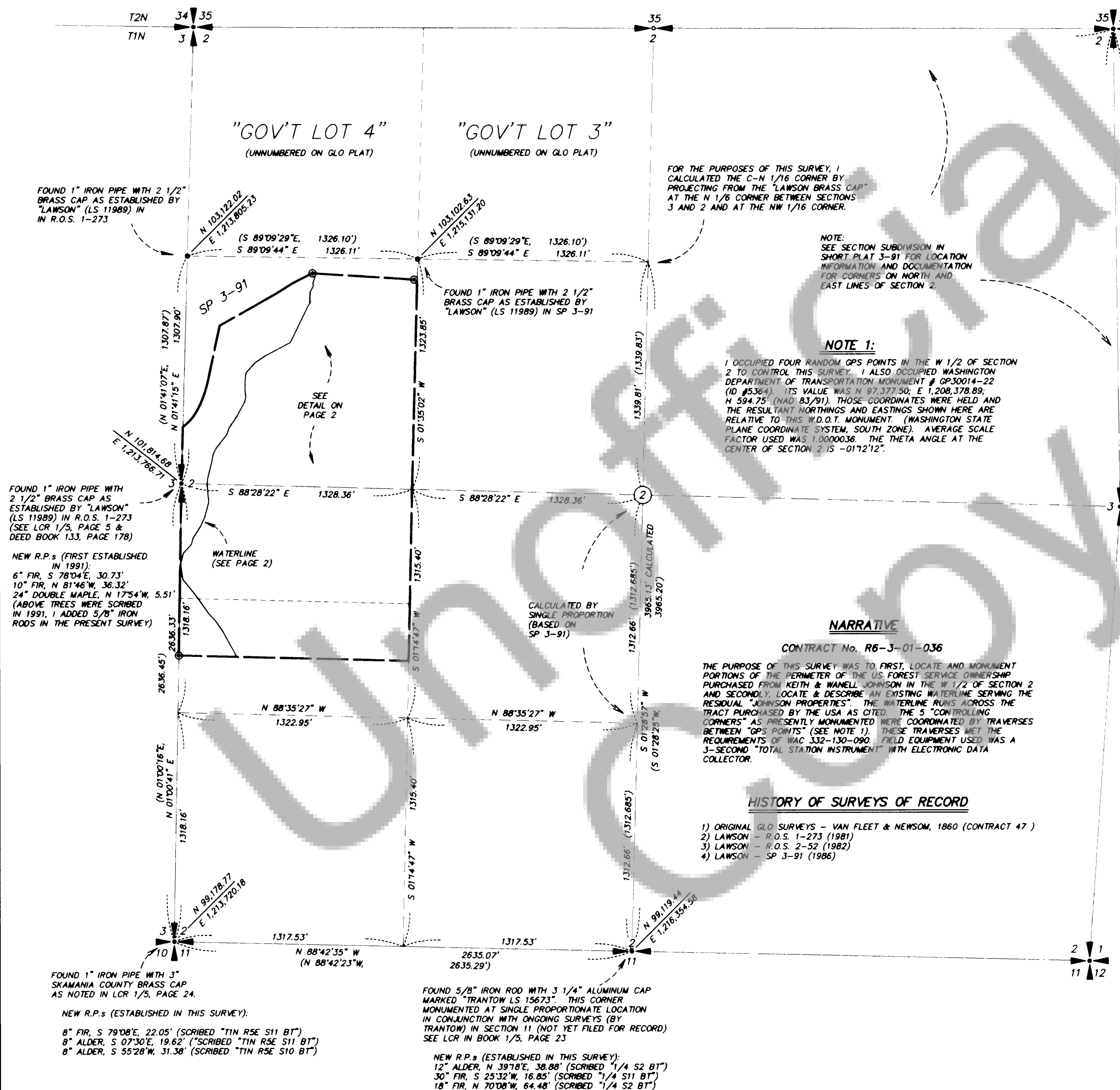
(Signed) Rory Lawry
Deputy County Auditor

NOTE: Hagedorn, Inc. makes no warranties as to matters of unwritten title such as acquiescence, estoppel, adverse possession, etc.

HAGEDORN, INC.
Surveying and Engineering

1924 Broadway Vancouver, Wa. 98663
Ph: (360) 696-4428 (503) 283-6778

SCALE: 1"=400'	CALC. BY: CEW	DWG# 01-303G
DATE: 4/23/03	DRAWN BY: CC	PAGE 1 OF 2
JOB NO.: 01-303G	CHECKED BY: CAB	



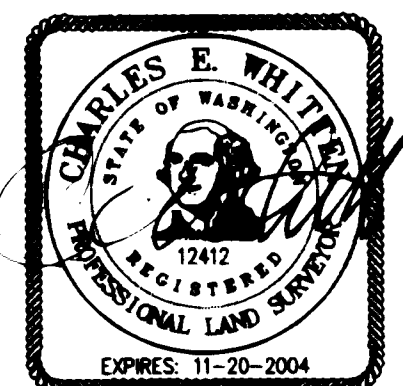
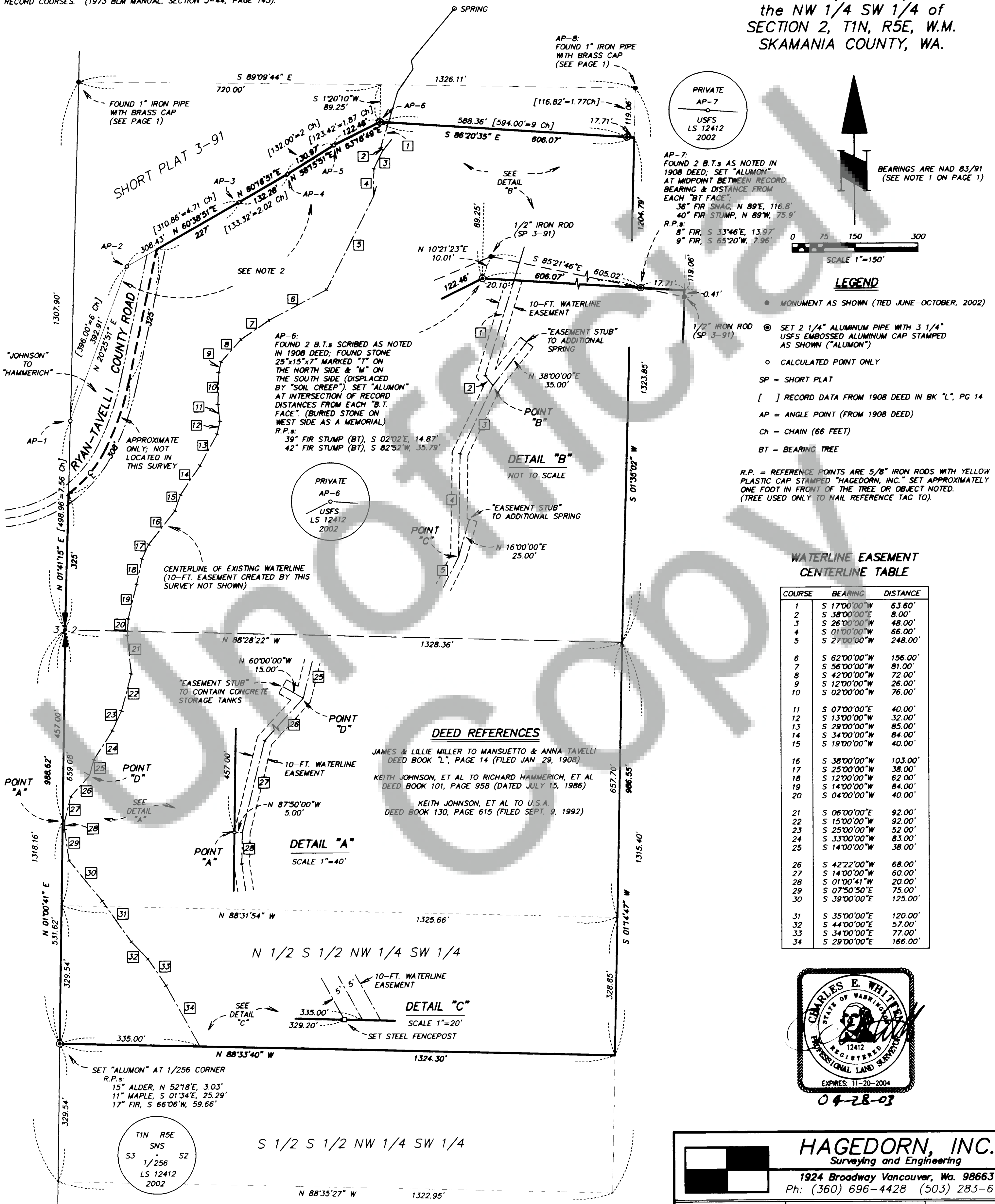
NOTE 2:

A PORTION OF THE NORTH BOUNDARY OF THE "U.S.A. TRACT" CITED IS THE SOUTH LINE OF THE "TAVELLI TRACT" AS DESCRIBED IN THE 1908 DEED CITED. THAT 1908 BOUNDARY WAS OBVIOUSLY SURVEYED SINCE THE BEARINGS ARE STATED IN DEGREES AND MINUTES. ADDITIONALLY, SOME OF THE ANGLE POINTS WERE MONUMENTED AND REFERENCED IN 1908. (AP-2, AP-6, AP-7 AND AP-8). I SEARCHED FOR MONUMENTS AND ACCESSORIES AT THESE 4 POINTS AND FOUND A STONE AND B.T.s AT AP-6 AND B.T.s AT AP-7 (WHICH I THEN MONUMENTED AS DESCRIBED BELOW). I CALCULATED THE 1908 BOUNDARY BETWEEN AP-1 AND AP-6 USING THE "GRANT BOUNDARY METHOD" USING A SCALE FACTOR OF 0.992185 AND APPLYING A ROTATION OF 02'00"51" TO THE RECORD COURSES. (1973 BLM MANUAL, SECTION 5-44; PAGE 143).

PAGE 2 OF 2

JOHNSON WATERLINE SURVEY

in the SW 1/4 NW 1/4 and the NW 1/4 SW 1/4 of SECTION 2, T1N, R5E, W.M. SKAMANIA COUNTY, WA.



HAGEDORN, INC.
Surveying and Engineering

1924 Broadway Vancouver, Wa. 98663
Ph: (360) 696-4428 (503) 283-6778

SCALE: 1"=150'
DATE: 4/23/03
JOB NO.: 01-303G

CALC. BY: CEW
DRAWN BY: CC
CHECKED BY: CAB

DWG# 01-303G2
PAGE 2 OF 2