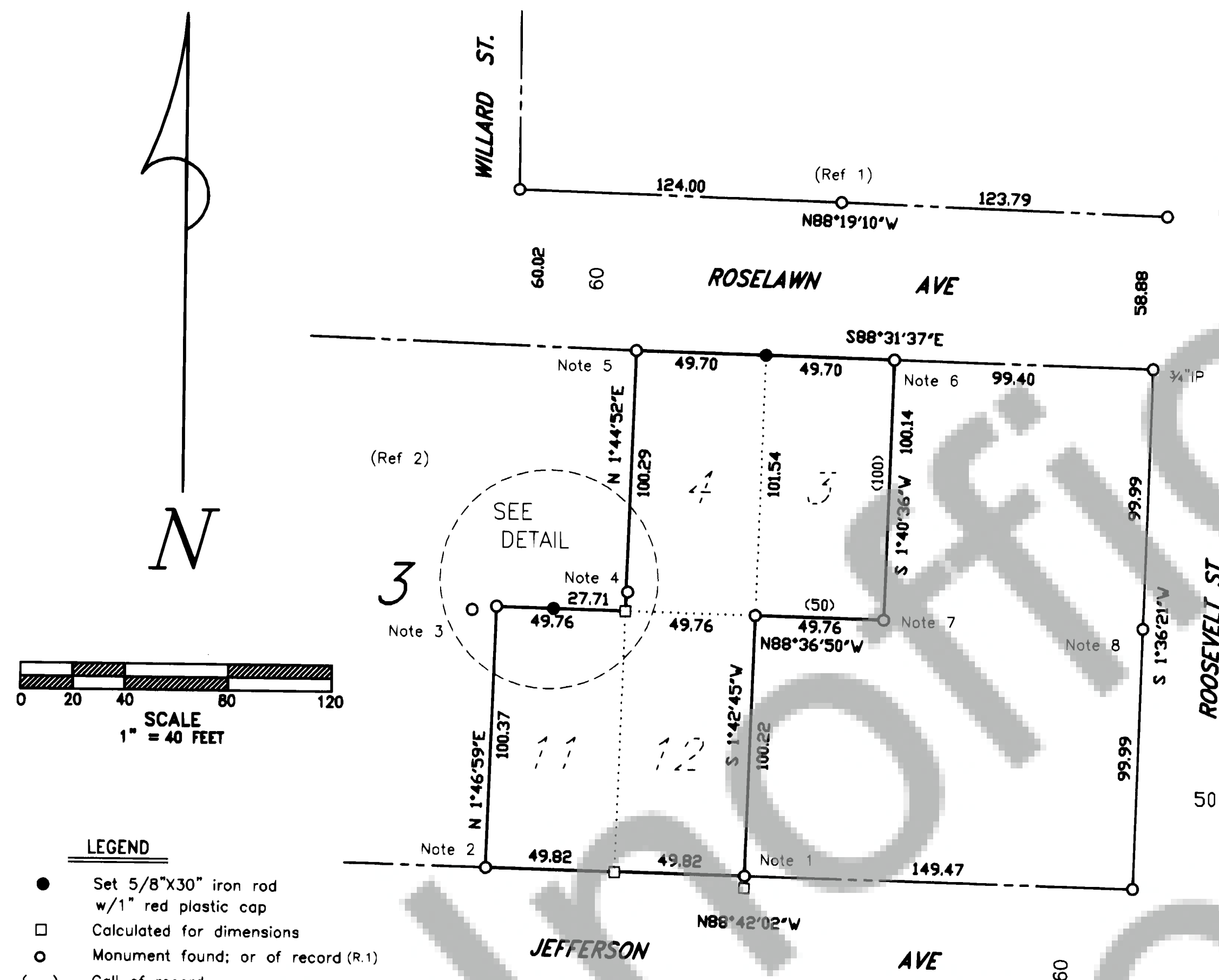


SURVEY in SW $\frac{1}{4}$ SE $\frac{1}{4}$ Sec. 36, T3N, R7E, W.M. **in Lots 3, 4, 11 & 12, Block 3, Johnson Addition to Stevenson**

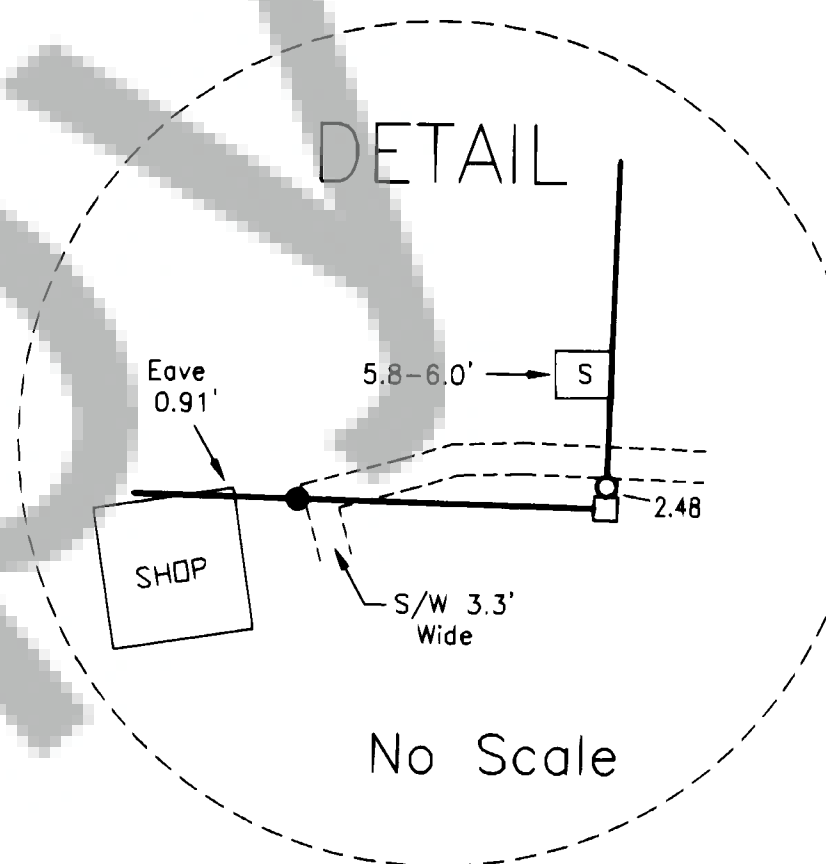


TRAVERSE STATEMENT: Ties to existing monuments for the parcels shown were made with a Sokkia five-second total station and related measuring equipment, all of which met State standards of WAC 332-130 at the time of this survey. Physical appurtenances which may be in conflict with existing conditions or items of record are noted or depicted. Field work was conducted on April 1, 2003.

SURVEY NARRATIVE: This survey was conducted to verify and/or establish the North corner monuments of Lot 4 and the South line of Lot 11. Monuments from Reference 2 were not established by proportion and were rejected for that reason.

NOTES:

1. IP bears S 3-13-27 W, 4.66 from set corner. The found monuments for this ownership were set by Ref. 4 according to owner.
2. IP bears N 41-04-18 E, 2.29 feet from set corner
3. IP bears S 82-00-06 W, 9.62 feet from set corner
4. Found IR bears N 6-03-13 E, 7.34 feet from calculated lot corner. Set IR for witness corner N 1-44-52 E, 2.48 feet from calculated lot corner.
5. Found IR bears S 86-04-27 E, 0.42 feet from set corner
6. IP bears S 9-52-19 W, 1.12 feet from set corner
7. IP bears N 73-35-21 E, 1.82 feet from set corner
8. Iron pipe held as common lot corner only. A calculated midpoint was used for proportioning interior lot corners.



Trantow Surveying makes no warranty as to matters of unwritten title; environmental concerns; the accuracy or position of features shown without dimension.

REFERENCES (those listed are considered as part of this drawing and may provide survey information or detail not shown hereon):

1. B.3, P.204 of Surveys, #123900
 2. B.3, P.183 of Surveys, #121666
 3. B.A, P.25 of Plats
- Basis of bearings used as per Reference 1.

TRANTOW SURVEYING, INC.
 412 W. Jefferson-POB 287
 Bingen, WA 98605-0287
 Ph 509/493-3111 Fx 509/493-4309
 Member of Land Surveyor's Assoc. of Washington

SURVEY FOR

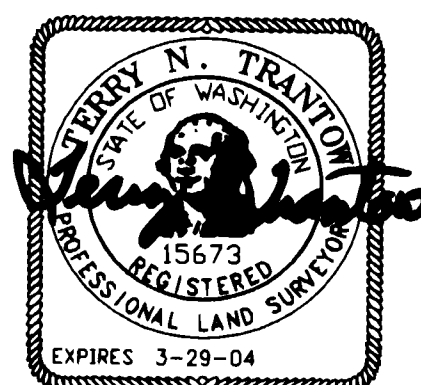
DOUG McKENZIE

SKAMANIA CO., WASHINGTON

#2135

© 2003

KW



SURVEYOR'S CERTIFICATE

This map correctly represents a survey made by me or under my direction in conformance with the requirements of the Survey Recording Act at the request of Doug McKenzie in March, 2003.

Terry N. Trantow
 Terry N. Trantow, PLS 15673

4-3-03
 Date

AUDITOR'S CERTIFICATE

Filed for record this 11th day of April, 2003 at 1:34 in Book 3 of SURVEYS at Page 453, AF# 148304, at the request of Trantow Surveying.

J. Michael Harrison
 County Auditor Deputy