

147910

BOOK 238 PAGE 531

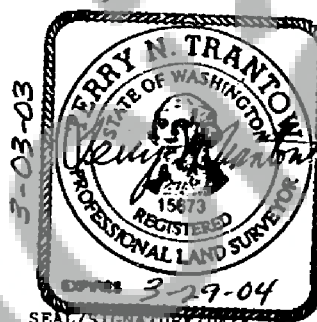
FILED IN RECORD
STATE OF WASH
BY *Trantow Surveying*

Mar 12 10 44 AM '03

O. Laury
J. MICHAEL GARRISON

LAND CORNER RECORD

GRANTOR/SURVEYOR/PUBLIC OFFICER: This corner record correctly represents work performed by me or under my direction in conformance with the Survey Recording Act.

COMPANY OR AGENCY: TRANTOW SURVEYING, INC
ADDRESS: PO BOX 287 - 412 W. JEFFERSON
BINGEN, WA 98605-0287

GRANTEE: PUBLIC

LEGAL: TWP: 2 N

RGE: 5 E

CORNER CODE: P-9

ADDITIONAL IDENTIFIER: (BLM designation, street or plat names, block, lot, etc.)

1/4 corner between 20 & 21

COUNTY: SKAMANIA

WASHINGTON PLANE COORDINATES: N:

E:

ORDER: ZONE: DATUM (Date of adjustment):

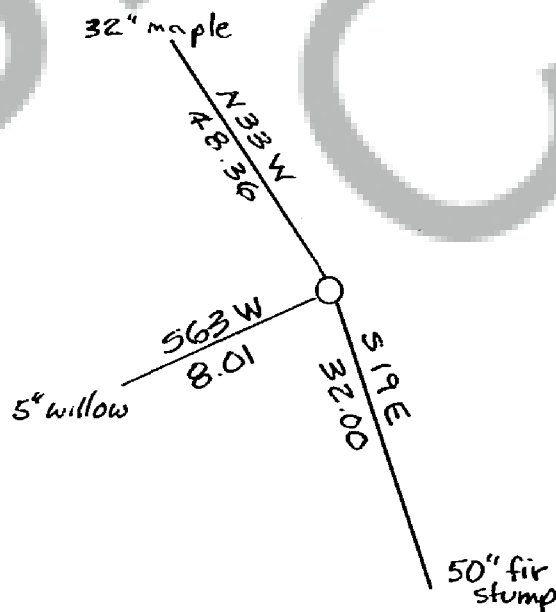
CORNER INFORMATION: Discuss the history, evidence found, and perpetuation of the corner. Diagram the references; provide the date of work; and, if applicable, a reference to a map of record and/or the field book/page no. Use the back, if needed.

GLO in 1859 set a post for this corner, from which bear:

12" hemlock, S88W, 17 links; 6" chittum, N80E, 23 links.

DNR in 1971 traversed this section line and set a concrete monument by single proportion for this corner, from which bear: 5" willow, S63W, 8.01 ft. to spike in base; 50" fir stump, S19E, 32.00 ft. to spike in base; 32" maple (on dike), N33W, 48.36 ft. to spike in base.

Found DNR monument in good condition, with calls the same as given. Date of work: January 16, 2003.

T2N | R5E
S.20 - S.21
1/4 S | 1971

MARK THE CORNER LOCATION BELOW AND FILL IN THE CORNER CODE BLANK ON THE OTHER SIDE:
For corners at the intersection of two lines, the corner code is the alphanumeric coordinate that corresponds to the appropriate intersection of lines.

For corners that are only on one line, the corner code is the line designation and the related line segment; i.e., a corner on line 5 between "B" and "C" is designated BC-5.

For corners that are between lines, the corner code is both line segments; i.e., a corner in the SE1/4 of the SE1/4 of section 18 is designated MN 4-5.

	1	2	3	4	5	6	7	8	9	10	11	12	13	14	15	16	17	18	19	20	21	22	23	24	25
A																									
B																									
C		6			5				4				3					2							
D																									
E																									
F																									
G		7			8				9				10				11				12				
H																									
J																									
K																									
L		18			17				16				15				14				13				
M																									
N																									
O																									
P		19			20				21				22				23				24				
Q																									
R																									
S																									
T		30			29				28				27				26				25				
U																									
V																									
W																									
X		31			32				33				34				35				36				
Y																									
Z																									
	1	2	3	4	5	6	7	8	9	10	11	12	13	14	15	16	17	18	19	20	21	22	23	24	25

RCW 58.09.060 (2) requires the following information on this form: an accurate description and location, in reference to the corner position, of all monuments and accessories (a) found at the corner and (b) placed or replaced at the corner; (c) basis of bearings used to describe or locate such monuments or accessories; and (d) corollary information that may be helpful to relocate or identify the corner position.

SPACE FOR ADDITIONAL COMMENT: