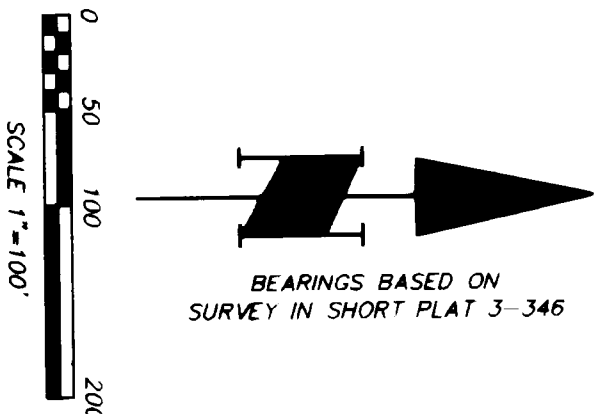
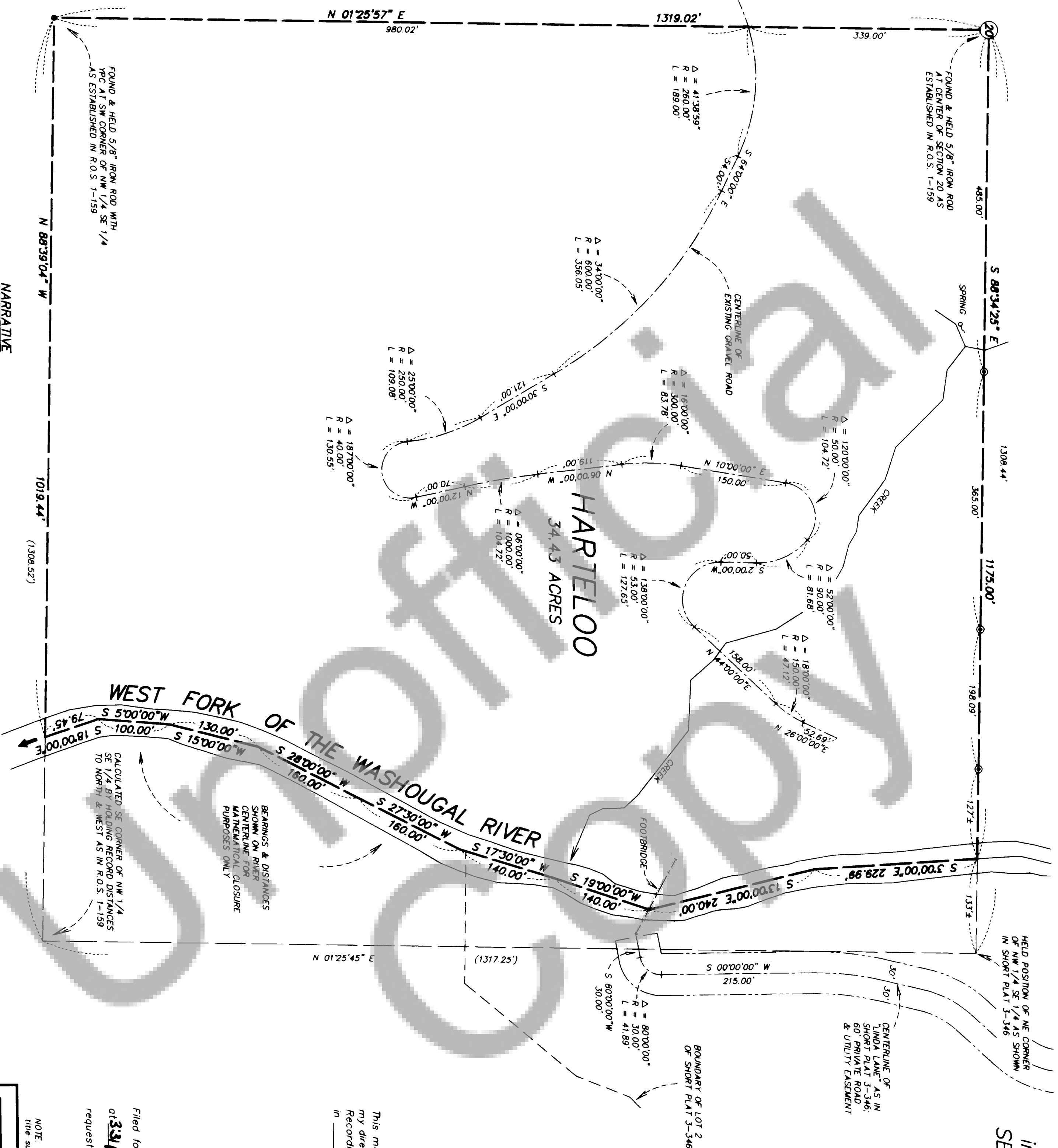


SURVEY

in the NW 1/4 SE 1/4 of
SECTION 20, T2N, R5E, W.M.
SKAMANIA COUNTY, WA.

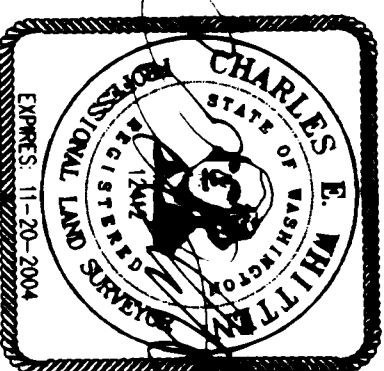


LEGEND

- MONUMENT AS SHOWN (TED MAY, 2002)
- ⊙ SET 5/8" x 30" IRON REBAR WITH ORANGE PLASTIC CAP STAMPED "WHITTEN 12412" WITH STEEL FENCEPOST SET ALONGSIDE
- R.O.S. = RECORD OF SURVEY
- () RECORD DATA
- AF# = AUDITOR'S FILE NUMBER
- ℄ = CENTERLINE
- YPC = YELLOW PLASTIC CAP

SURVEYOR'S CERTIFICATE

This map correctly represents a survey made by me or under my direction in conformance with the requirements of the Survey Recording Act at the request of JERRY HARTELOO in JULY, 2002



AUDITOR'S CERTIFICATE

Filed for record this 6th day of December, 2002 at 3:34 p.m. in Book 3 of surveys at Page 445 of the request of Hagedorn, Inc. (Signed) Gary Hagedorn, Deputy County Auditor

NOTE: Hagedorn, Inc. makes no warranties as to matters of unwritten title such as acquiescence, estoppel, adverse possession, etc.

HAGEDORN, INC.

Surveying and Engineering

1924 Broadway Vancouver, WA 98663

Ph: (360) 696-4428 (503) 283-6778

SCALE: 1"=100' DATE: 10/29/02 JOB NO. 01-253 CALC. BY: CEW DRAWN BY: CC CHECKED BY: CAB DWG# 01-2535 SHEET 1 OF 1

NARRATIVE

THE PURPOSE OF THIS SURVEY WAS TO LOCATE THE BOUNDARY OF THE SUBJECT TRACT AND TO MONUMENT A PORTION OF THE NORTH LINE. A RANDOM TRAVERSE WAS RUN AROUND THE PERIMETER OF THE TRACT. NEW MONUMENTS ESTABLISHED WERE SET ALONG THE ABOUT TRAVERSE WHICH MEETS THE REQUIREMENTS OF WAC 352-130-095. FIELD EQUIPMENT USED WAS A 3-SECOND TOTAL STATION INSTRUMENT WITH ELECTRONIC DATA COLLECTOR.