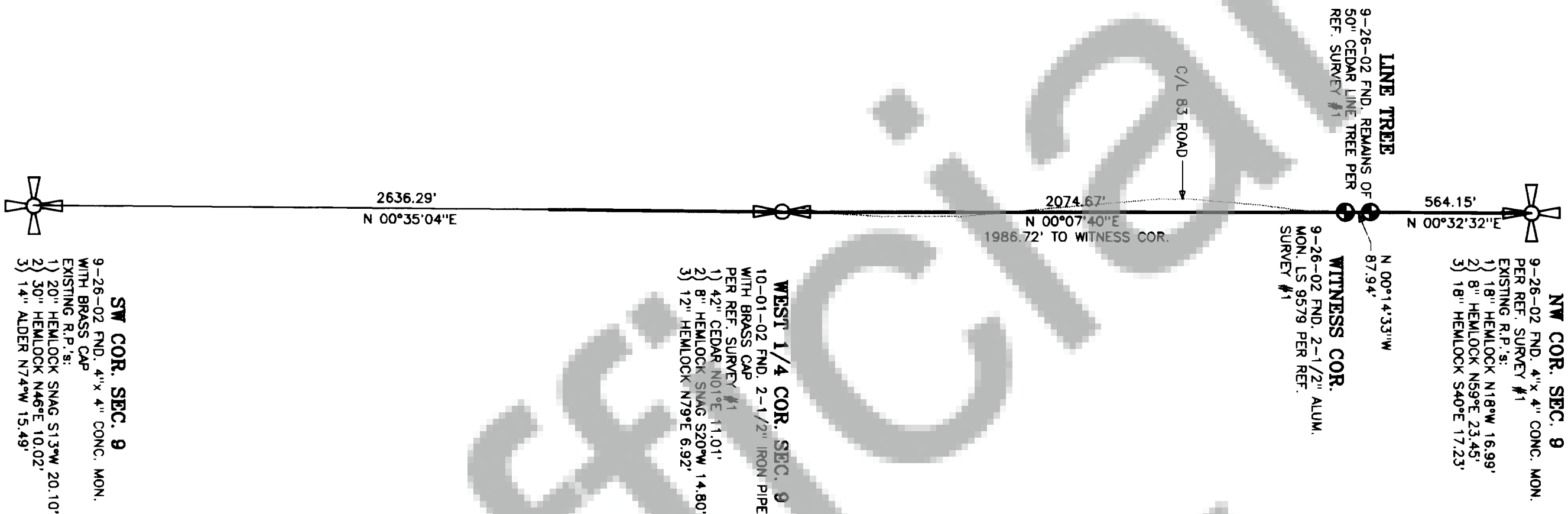
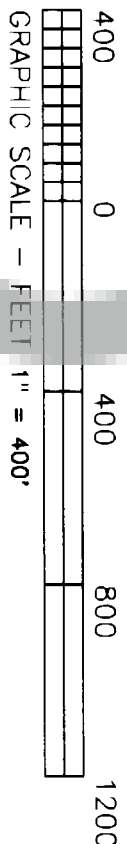


PART OF THE NW1/4 NW1/4, SW1/4 NW1/4,
NW1/4 SW1/4 & SW1/4 SW1/4 OF
SECTION 9 - T.7N - R.5E, W.M.
SKAMANIA COUNTY, WASHINGTON



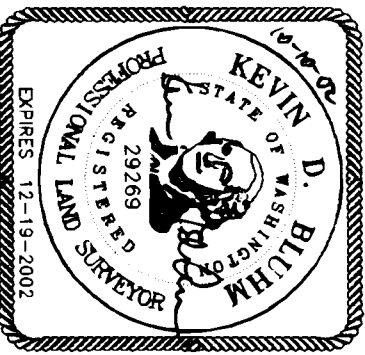
BASIS OF BEARING: NW COR. SEC. 9 TO WEST 1/4 COR. SEC. 9
PER SURVEY FILED IN VOLUME 02, PAGE 206 RECORDS OF
SKAMANIA COUNTY, WASHINGTON.



METHOD OF SURVEY
FIELD TRAVERSE USING A TOPCON GTS-312
(00°00'03") TOTAL STATION

LEGEND
● = FOUND AS NOTED
— = FLAGGED AND PAINTED LINE

REFERENCE SURVEYS
1) RECORD OF SURVEY FILED IN VOL. 02, PG. 206 BY LS 9579
2) RECORD OF SURVEY FILED IN VOL. 02, PG. 197 BY LS 9579



Auditor's Certificate

FILED FOR RECORD THIS 29th DAY OF Oct., 2002 AT
12:13 AM, IN BOOK 3 OF SURVEYS AT PAGE 443
AT THE REQUEST OF BLUHM & ASSOCIATES LAND SURVEYORS, INC.

COUNTY AUDITOR Michael Lawson by Gregory - Deputy

SURVEYOR'S CERTIFICATE

THIS MAP CORRECTLY REPRESENTS A SURVEY MADE BY ME
OR UNDER MY DIRECTION IN CONFORMANCE WITH THE
REQUIREMENTS OF THE SURVEY RECORDING ACT AT THE
REQUEST OF FRUIT GROWERS
IN SEPTEMBER, 2002.

Kevin Bluhm
KEVIN BLUHM - LICENSE NO. 29269

RECORD OF SURVEY DESCRIPTION

THE WEST LINE OF SECTION 9, TOWNSHIP 7 NORTH, RANGE 5 EAST, W.M.,
SKAMANIA COUNTY, WASHINGTON

BLUHM ASSOCIATES LAND SURVEYORS, INC.
1068 S. MARKET BLVD. CHEHALIS, WA 98532
PHONE (360) 748-1551 FAX (360) 748-6282 kbluhm@surveyorservices.com

DRAWN BY: KEVIN BLUHM DATE: OCTOBER 9, 2002 JOB # 02-491
CHECKED BY: JEFF STEPHAM SCALE: 1" = 400' SHEET 1 OF 1