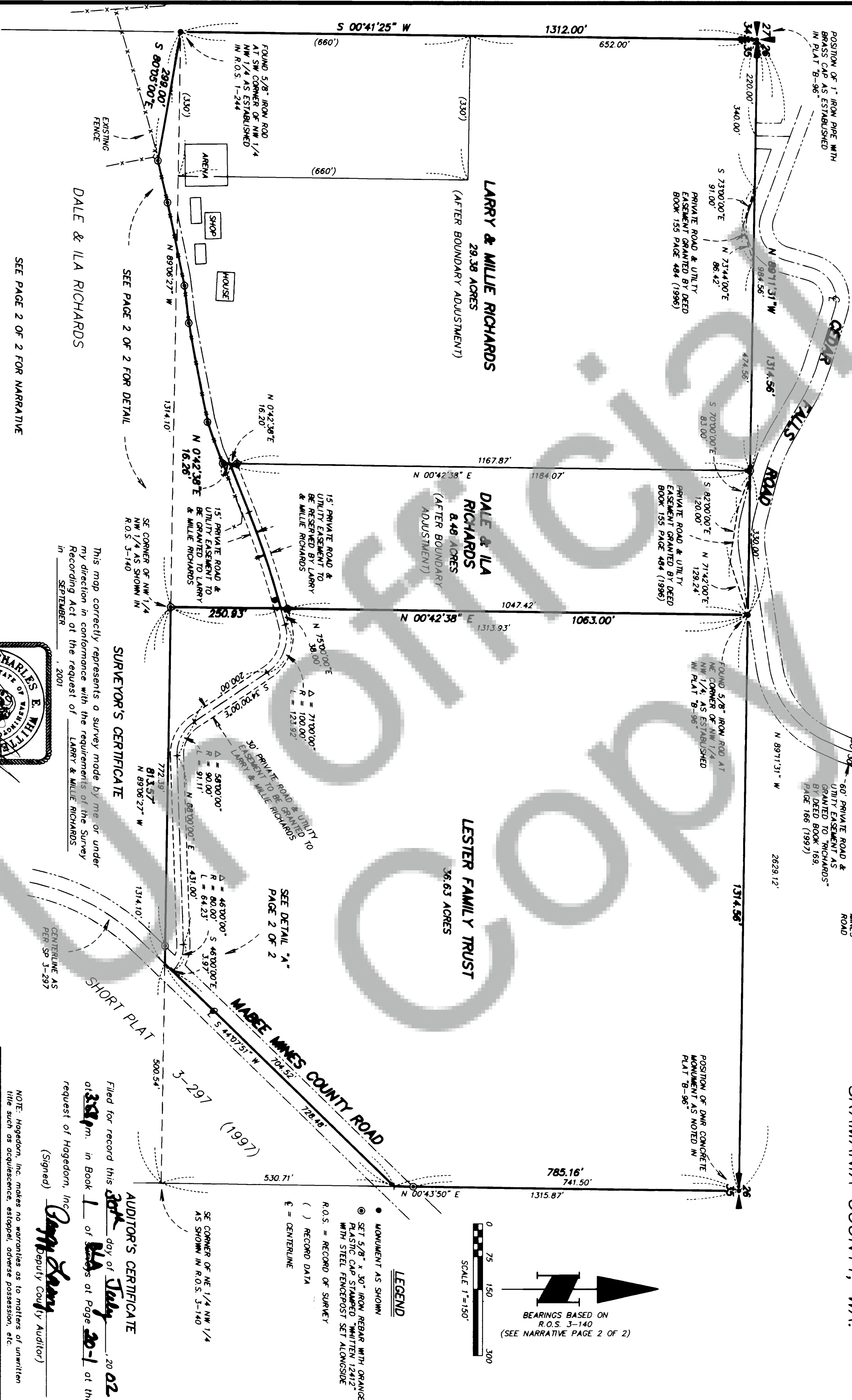


PAGE 1 OF 2  
**SURVEY**

in the NW 1/4 NW 1/4 &  
NE 1/4 NW 1/4 & SW 1/4 NW 1/4  
of SECTION 35, T2N, R5E, W.M.  
SKAMANIA COUNTY, WA.



SURVEYOR'S CERTIFICATE

This map correctly represents a survey made by me or under my direction in conformance with the requirements of the Survey Recording Act in the request of LARRY & MILLIE RICHARDS

in SEPTEMBER, 2001

AUDITOR'S CERTIFICATE

Filed for record this 30th day of July, 2002

at 3:44 pm. in Book 1 of Maps at Page 20-1 at the request of Hagedorn, Inc.

(Signed) *Gregory Couly*  
Deputy County Auditor

NOTE: Hagedorn, Inc. makes no warranties as to matters of unwritten title such as acquiescence, estoppel, adverse possession, etc.

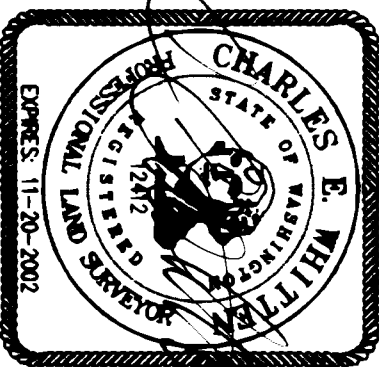
**HAGEDORN, INC.**

1924 Broadway Vancouver, WA. 98663  
Ph: (360) 696-4428 (503) 283-6778

SCALE: 1"=150'  
DATE: 6/25/02  
JOB NO.: 01-069

CALC. BY: CEW  
DRAWN BY: CC  
CHECKED BY:

DWG# 01-069  
PAGE 1 OF 2



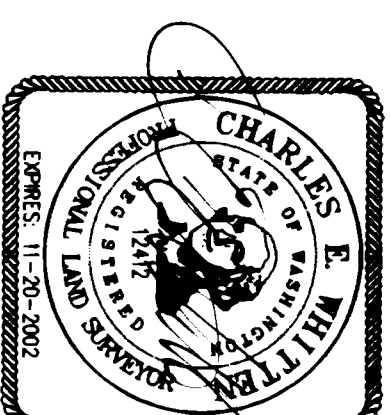
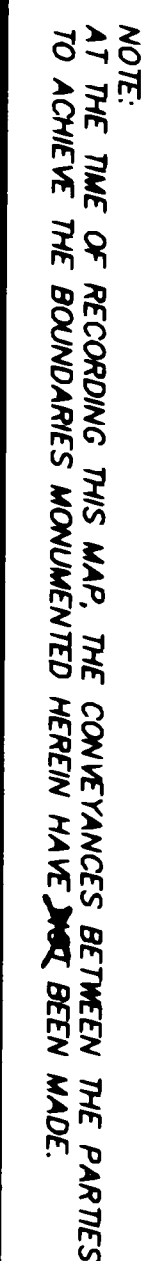
NOTE:  
AT THE TIME OF RECORDING THIS MAP, THE CONVEYANCES BETWEEN THE PARTIES  
TO ACHIEVE THE BOUNDARIES MONUMENTED HEREIN HAVE ~~NOT~~ BEEN MADE.

PAGE 2 OF 2

**SURVEY**

in the NW 1/4 NW 1/4 &  
NE 1/4 NW 1/4 & SW 1/4 NW 1/4  
of SECTION 35, T2N, R5E, W.M.  
SKAMANIA COUNTY, WA.

# SURVEY



06-26-02

HAGEDORN, INC.

**1924 Broadway Vancouver, Wa. 98663**  
Ph: (360) 696-4428 (503) 283-6778

SCALE:	1"=80'	CALC. BY:	CEW	DWG#	01-069A
DATE:	6/25/02	DRAWN BY:	CC	PAGE	2 OF 2
JOB NO.:	01-069	CHECKED BY:			