

GLACIER VIEW SHORT PLAT

in the W 1/2 SW 1/4 of
SECTION 21, T7N, R5E, W.M.
SKAMANIA COUNTY, WA.

WE, OWNERS OF THE ABOVE TRACT OF LAND, HEREBY DECLARE AND CERTIFY THIS SHORT PLAT TO BE TRUE AND CORRECT TO THE BEST OF OUR ABILITIES, AND THAT THIS SHORT SUBDIVISION HAS BEEN MADE WITH OUR FREE CONSENT AND IN ACCORDANCE WITH OUR DESIRES. FURTHER, WE DEDICATE ALL ROAD AS SHOWN, NOT NOTED AS PRIVATE, AND WAIVE ALL CLAIMS FOR DAMAGES AGAINST ANY MAINTENANCE OF SAID ROADS.

[Signature]
OWNER
[Signature]
OWNER

NOTARY PUBLIC
NOTARY PUBLIC IN AND FOR THE COUNTY OF CLATSOP
RESIDING AT Yamhill, OR

[Signature]
DATE 9/2/02

WATER SUPPLY METHODS AND SANITARY SEWER DISPOSAL/ON-SITE SERVICE DISPOSAL SYSTEMS CONVENIENT FOR USE IN THIS SHORT SUBDIVISION CONFORM WITH CURRENTLY APPLICABLE STANDARDS.
[Signature]
DATE 9/3/02

1. Brent Holman, COUNTY ENGINEER OF SKAMANIA COUNTY, WASH., CERTIFY THAT THIS PLAT MEETS CURRENT SKAMANIA COUNTY REQUIREMENTS, SERVING THAT APPROVED ROAD AND/OR BRIDGES, DEVELOPED IN CONJUNCTION WITH THE APPROVED PLAT, MEET CURRENT SKAMANIA COUNTY DETAILING STANDARDS, ROAD PLANS, SERVING THAT THE CONSTRUCTION OF SAID STRUCTURES, REQUIRED PRIOR TO FINAL APPROVAL, MEETS STANDARD ENGINEERING PRACTICES, AND APPROVE THE LAYOUT OF ROADS AND EASEMENTS, AND APPROVE THE ROAD NAMES AND NUMBERS OF SUCH ROADS.
[Signature]
COUNTY ENGINEER
DATE 9/8/02

ALL TAXES AND ASSESSMENTS INCURRED WITH THIS SHORT PLAT HAVE BEEN PAID, DISCHARGED OR SATISFIED.
[Signature]
DATE 5-9-2002

THE LAYOUT OF THIS SHORT SUBDIVISION COMPLIES WITH ORDINANCE 1980-07 REQUIREMENTS, AND THE SHORT PLAT IS APPROVED SUBJECT TO RECORDING IN THE SKAMANIA COUNTY AUDITOR'S OFFICE.
[Signature]
DATE 5/9/02

SURVEYOR'S CERTIFICATE

THIS MAP CORRECTLY REPRESENTS A SURVEY MADE BY ME OR UNDER MY DIRECTION IN CONFORMANCE WITH THE REQUIREMENTS OF THE SURVEY RECORDING ACT AT THE REQUEST OF
[Signature]
DATE 5/9/02

STATE OF WASHINGTON
COUNTY OF SKAMANIA

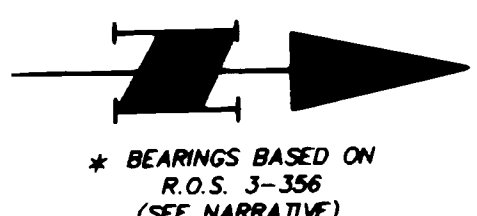
I HEREBY CERTIFY THAT THE WITHIN INSTRUMENT OF WRITING FILED BY
[Signature]
OF Brent Holman AT 4:17 P.M.
WAS RECORDED IN BOOK 3 OF Short Plats AT PAGE 402-3

[Signature]
REGISTERED SKAMANIA COUNTY, WASHINGTON
COUNTY AUDITOR
[Signature]

HAGEDORN, INC.
1924 Broadway Vancouver, WA 98663
Ph: (360) 696-4428 (503) 283-6778

SCALE: 1"=300'
DATE: 3/27/02
JOB NO.: 00-4100
DRAWN BY: CC
CHECKED BY: DLS
SHEET 1 OF 2

0 150 300 600
SCALE 1"=300'



ORIGINAL DEED REFERENCE

DAVE OREGAN, ET AL.
DEED BOOK 205, PAGE 599
FILED 12/29/2000
(SEE RESERVATIONS IN BOOK W. PAGE 203, BOOK 21, PAGE 123 AND BOOK 177, PAGE 200)

POSITION OF DNR CONCRETE MONUMENT (R.O.S. 3-376) SEE MONUMENT RECORD FILED WITH DNR BY C.E. WATTEEN, DATED 5/23/89.

POSITION OF DNR CONCRETE MONUMENT (R.O.S. 3-376) SEE MONUMENT RECORD FILED WITH DNR BY J.G. LAWSON, DATED 5/19/89.

LEGEND

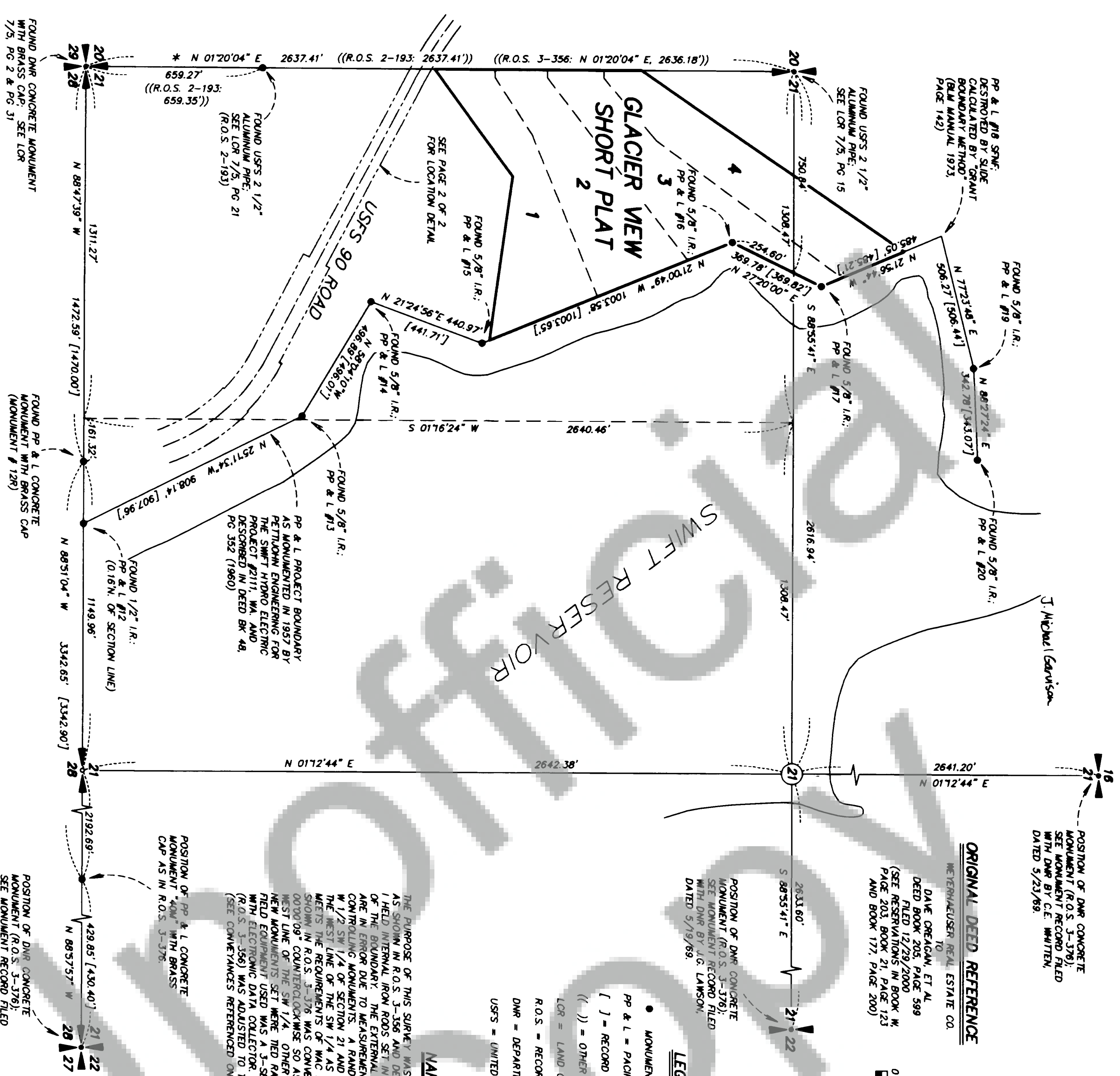
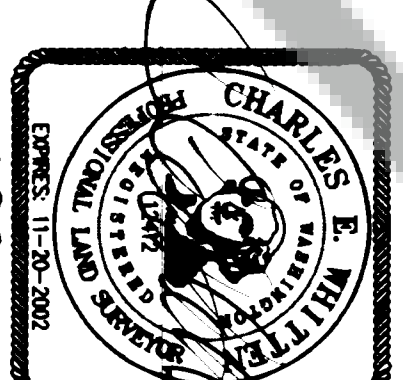
- MONUMENT AS NOTED
- PP & L = PACIFIC POWER AND LIGHT
- [] = RECORD PP & L DATA
- (()) = OTHER RECORD DATA
- LOR = LAND CORNER RECORD
- R.O.S. = RECORD OF SURVEY
- DNR = DEPARTMENT OF NATURAL RESOURCES
- USFS = UNITED STATES FOREST SERVICE

NARRATIVE

THE PURPOSE OF THIS SURVEY WAS TO LOCATE THE BOUNDARY OF LOTS 2 & 3* AS SHOWN IN R.O.S. 3-356 AND DESCRIBED IN DEED BOOK 205, PAGE 599. I HELD INTERNAL IRON RODS SET IN R.O.S. 3-356 TO CONTROL THE ALIGNMENT OF THE BOUNDARY. THE EXTERNAL IRON RODS AS ESTABLISHED IN R.O.S. 3-356 ARE IN ERROR DUE TO MEASUREMENT ERRORS AND FAILURE TO RECOVER CONTROLLING MONUMENTS. A RANDOM TRAVERSE WAS RUN AROUND THE W 1/2 SW 1/4 OF SECTION 21 AND ORIENTED TO THE BEARING SHOWN FOR THE WEST LINE OF THE SW 1/4 AS NOTED IN R.O.S. 3-356. THIS TRAVERSE MEETS THE REQUIREMENTS OF WAC 332-130-090. THE MODEL OF SECTION 21 SHOWN IN R.O.S. 3-376 WAS CONVERTED TO GROUND DISTANCE AND ROTATED WEST LINE OF THE SW 1/4. OTHER CONTROLLING MONUMENTS FOUND AND NEW MONUMENTS SET WERE TIED RADIALY FROM THE ABOVE TRAVERSE. FIELD EQUIPMENT USED WAS A 3-SECOND TOTAL STATION INSTRUMENT WITH ELECTRONIC DATA COLLECTOR. THE BOUNDARY BETWEEN LOTS 2 & 3* (R.O.S. 3-356) WAS ADJUSTED TO THE CONFIGURATION SHOWN HEREON (SEE CONVEYANCES REFERENCED ON SHEET 2).

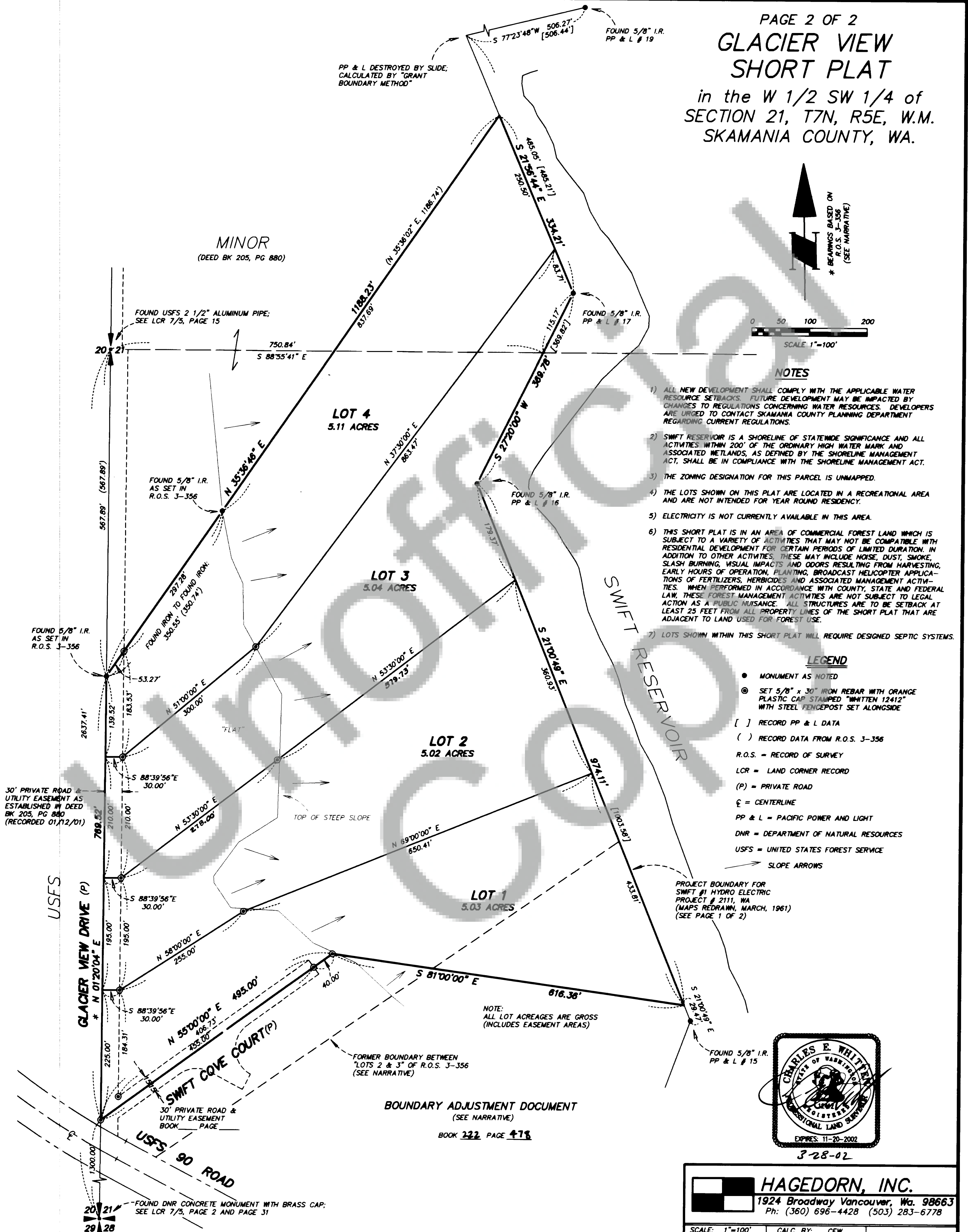
POSITION OF PP & L CONCRETE MONUMENT "40W" WITH BRASS CAP AS IN R.O.S. 3-376

POSITION OF DNR CONCRETE MONUMENT (R.O.S. 3-376) SEE MONUMENT RECORD FILED WITH DNR BY J.G. LAWSON, DATED 5/19/89.



PRIVATE ROADS WARNING

PURCHASERS OF A LOT, OR LOTS, IN THIS PLAT ARE ADVISED TO CONSULT THE SKAMANIA COUNTY DEVELOPMENT ASSISTANCE HANDBOOK WITH REGARD TO PRIVATE ROADS BECAUSE THE LOT, OR LOTS, IN THIS PLAT ARE SERVED BY PRIVATE ROADS. PRIVATE ROADS ARE NOT MAINTAINED BY SKAMANIA COUNTY. LOT OWNERS WITHIN THIS PLAT MUST PAY FOR THE MAINTENANCE OF THE PRIVATE ROADS SERVING THIS PLAT, INCLUDING GRADING, DRAINAGE, SNOW PLOWING, ETC. THE CONDITION OF THE PRIVATE ROAD MAY AFFECT SUBSEQUENT ATTEMPTS TO DIVIDE YOUR LOT OR LOTS. PRIVATE ROADS MUST COMPLY WITH SKAMANIA COUNTY'S PRIVATE ROAD REQUIREMENTS ORD. 1980-07 SEC. 6.20. SEE ROAD MAINTENANCE AGREEMENT RECORDED UNDER BOOK 224 PAGE 36.



8-28-02

HAGEDORN, INC.
1924 Broadway Vancouver, Wa. 98663
Ph: (360) 696-4428 (503) 283-6778

SCALE: 1"=100'	CALC. BY: CEW	DWG# 00-410CC
DATE: 3/27/02	DRAWN BY: CC	SHEET 2 OF 2
JOB NO.: 00-410C	CHECKED BY: DLS	