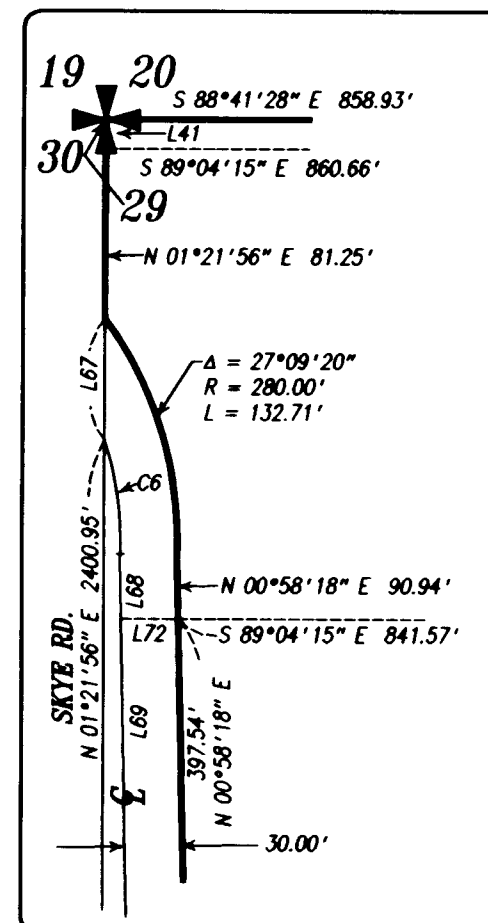


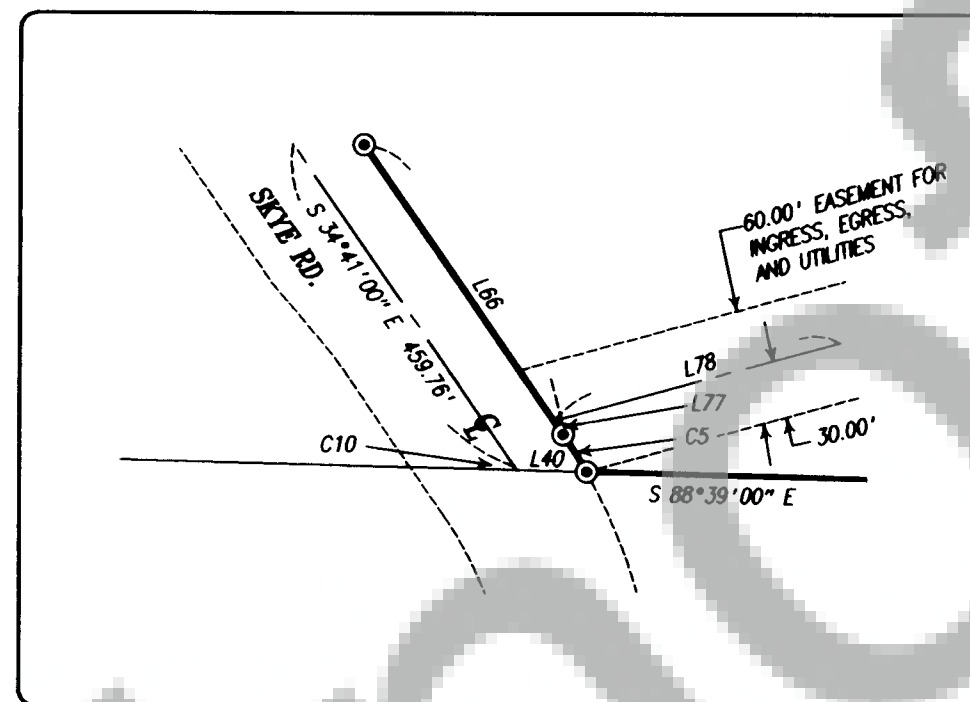
## CORNER HISTORY

1. THE ORIGINAL N 1/4 CORNER WAS A POST ESTABLISHED BY LEWIS VAN VLEET WORKING FOR THE GENERAL LAND OFFICE (G.L.O.) UNDER CONTRACT #47 IN 1859. THE ACCESSORIES WERE: 10" FIR N5°W 106 LINKS DISTANCE, 30" FIR STUB S12°W 148 LINKS DISTANCE. NO ORIGINAL EVIDENCE REMAINS. HISTORICALLY THIS CORNER HAS BEEN CALCULATED BY SINGLE PROPORTION BETWEEN THE N.E. AND N.W. CORNERS OF SECTION 29. WE ALSO CALCULATED THIS CORNER BY SINGLE PROPORTION.
2. THE ORIGINAL S.W. CORNER OF SEC. 29 WAS A POST ESTABLISHED IN 1859 BY LEWIS VAN VLEET UNDER CONTRACT #47. THE THREE ACCESSORIES WERE: 60" DEAD FIR N34°W 62 LINKS DISTANCE, 50" DEAD FIR N5°E 50 LINKS DISTANCE, 30" DEAD FIR S62°E 75 LINKS DISTANCE. DURING OUR SURVEY OF BUHMAN HEIGHTS (B/20) REC. NOVEMBER 1976, WE FOUND 2 ORIGINAL ACCESSORIES (60" AND 50" DEAD FIRS). WE SET A 3/4" IRON PIPE ALONG WITH THREE NEW ACCESSORIES: 18" MAPLE N53°W 4.44 FEET, 28" FIR N43°E 21.23 FEET, 30" FIR S34°E 56.23 FEET. ALSO FOUND WAS A FISH AND GAME CONCRETE MONUMENT N 56.2° AND W 6.3° FROM THE IRON PIPE'S POSITION.
3. THE ORIGINAL S 1/4 CORNER WAS A POST ESTABLISHED BY LEWIS VAN VLEET IN 1859 UNDER CONTRACT #47. THE ACCESSORIES WERE: A 10" ALDER N7°W 39 LINKS DISTANCE AND A 5" ALDER S 2°15'W 58 LINKS DISTANCE, OF WHICH NO EVIDENCE REMAINS. HISTORICALLY THIS CORNER'S POSITION HAS BEEN CALCULATED BY SINGLE PROPORTION BETWEEN THE S.E. AND S.W. CORNERS OF THE SECTION. WE ALSO CALCULATED THE CORNER BY SINGLE PROPORTION.
4. THE ORIGINAL S.E. SECTION CORNER WAS A POST ESTABLISHED IN 1859 BY LEWIS VAN VLEET UNDER CONTRACT #47 WITH THE ACCESSORIES OF A 66" DEAD FIR STUB S8°W 64 LINKS DISTANCE, 60" DEAD FIR STUB N80°W 24 LINKS DISTANCE, 48" DEAD FIR STUB S71°E 165 LINKS DISTANCE, 3" MAPLE N52°E 71 LINKS DISTANCE. IN 1978 WE FOUND A FISH AND GAME DEPARTMENT BRASS CAP IN CONCRETE. DURING A PREVIOUS SURVEY OF RIVERSIDE ESTATES (B/44, 45), SAID MONUMENT WAS LOCATED AT A FOUR-WAY FENCE CORNER AND THE POSITION WAS VERIFIED WITH THE TWO REMAINING ACCESSORIES. SUBSEQUENT SURVEYS HAVE SHOWN HOLDING SAID MONUMENT FOR THE S.E. CORNER OF SECTION 29.
5. THE ORIGINAL MONUMENT WAS A POST ESTABLISHED BY LEWIS VAN VLEET IN 1859 UNDER CONTRACT #47 WITH ACCESSORIES OF A 15" FIR S 62° W 26 LINKS, A 12" FIR N 39° W 198 LINKS, A 14" FIR S 15° E 217 LINKS, OF WHICH NO EVIDENCE REMAINS. SKAMANIA COUNTY ROAD PLANS, DATED APRIL 1979, OF SKYE ROAD RE-ALIGNMENT SURVEY (C.R.P. #79-9) SHOWS FINDING A SKAMANIA COUNTY BRASS CAP AT THE P.I. OF THE NEW ALIGNMENT OF SKYE ROAD (STA. 97+51.13) AND IS NOTED ALSO TO BE THE SECTION CORNER. SUBSEQUENT SURVEYS HAVE ACCEPTED SKAMANIA COUNTY'S BRASS CAP AS THE SECTION CORNER.
6. ORIGINAL POSITION ESTABLISHED AS A POST BY LEWIS VAN VLEET IN 1859 UNDER CONTRACT #47 WITH ACCESSORIES OF A DEAD 50" FIR N 39° E 90 LINKS AND A 14" FIR N 53°W 390 LINKS. IN BOOK 1 OF SURVEYS, PAGE 72, PARAMETRIX INC. PROPORTIONED THE LOCATION AND OLSON ENGINEERING SET A 3/4" IRON PIPE USING AN E-W FENCE LINE AS THE BEST EVIDENCE FOR NORTHING AND THE BEARING BETWEEN THE FOUND EVIDENCE AT THE SECTION CORNERS FOR EASTING.

## DETAIL A (N.T.S.)



## DETAIL B (N.T.S.)



## NOTES

1. ACREAGE CALCULATIONS FOR PARCELS 1, 2, AND 7 DO NOT INCLUDE B.P.A.'S PROPERTY (300' STRIP). IT DOES, HOWEVER, INCLUDE THE PROPERTY BETWEEN B.P.A.'S NORTH LINE AND THE NORTH LINE OF SECTION 29. ACREAGE CALCULATIONS FOR PARCELS 1, 5, AND 6 (AS SHOWN) INCLUDE THE HALF WIDTH OF SKYE ROAD (TO CENTERLINE).
2. THE RIVER WAS TIED AT ITS LOWEST POINT DURING THE SUMMER OF 1999. THIS PORTION OF THE RIVER IS DEFINED BY HIGH STEEP BANKS AND VERTICAL CLIFFS. THE WATER, AT DIFFERENT POINTS, SPLIT INTO MANY FLOW PATTERNS AS IT FLOWED THROUGH THE CANYON, MAKING IT DIFFICULT TO DETERMINE A MAIN FLOW CHANNEL (THREAD). THE CENTERLINE TIES AS SHOWN REFLECTS THE CENTERLINE OF THE CANYON AND (AT DIFFERENT POINTS) MAY NOT BE IN ANY FLOW CHANNELS OF THE RIVER. HOWEVER DURING NORMAL FLOW PERIODS THE CENTERLINE OF THE RIVER WOULD BE IN THE CENTERLINE OF THE CANYON AS TIED.

## PROCEDURE NOTE

FIELD TRAVERSES WERE WITH A LEICA TC-1610 (1") AND ADJUSTED BY COMPASS RULE.

## SURVEY REFERENCES

SURVEY BY OLSON ENGINEERING INC. OF RIVERSIDE ESTATES SUBDIVISION (B/44, 45) REC. OCT. 1978

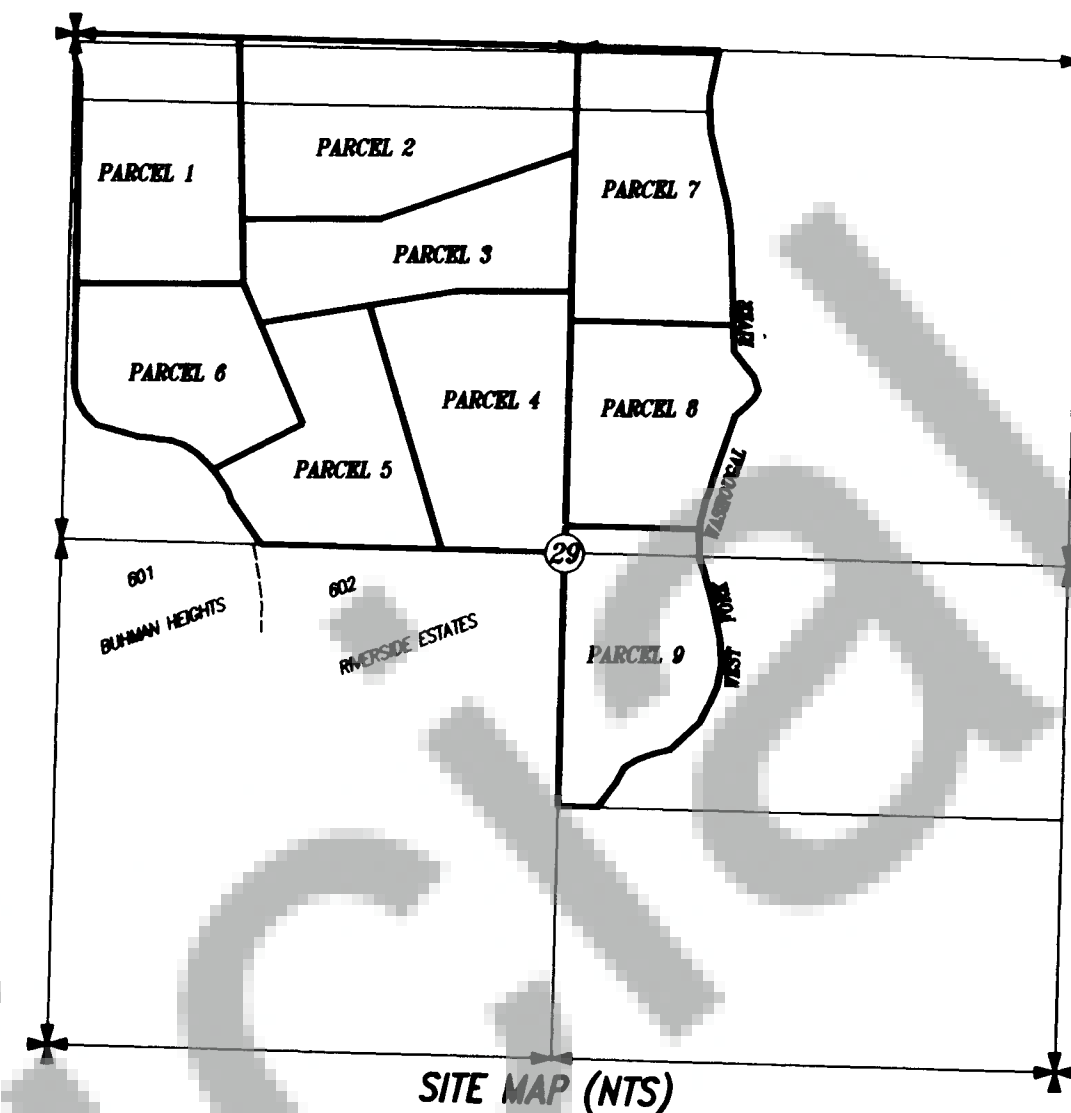
SURVEY BY OLSON ENGINEERING INC. OF BUHMAN HEIGHTS SUBDIVISION (B/20) REC. NOV. 1976

## DEED REFERENCES

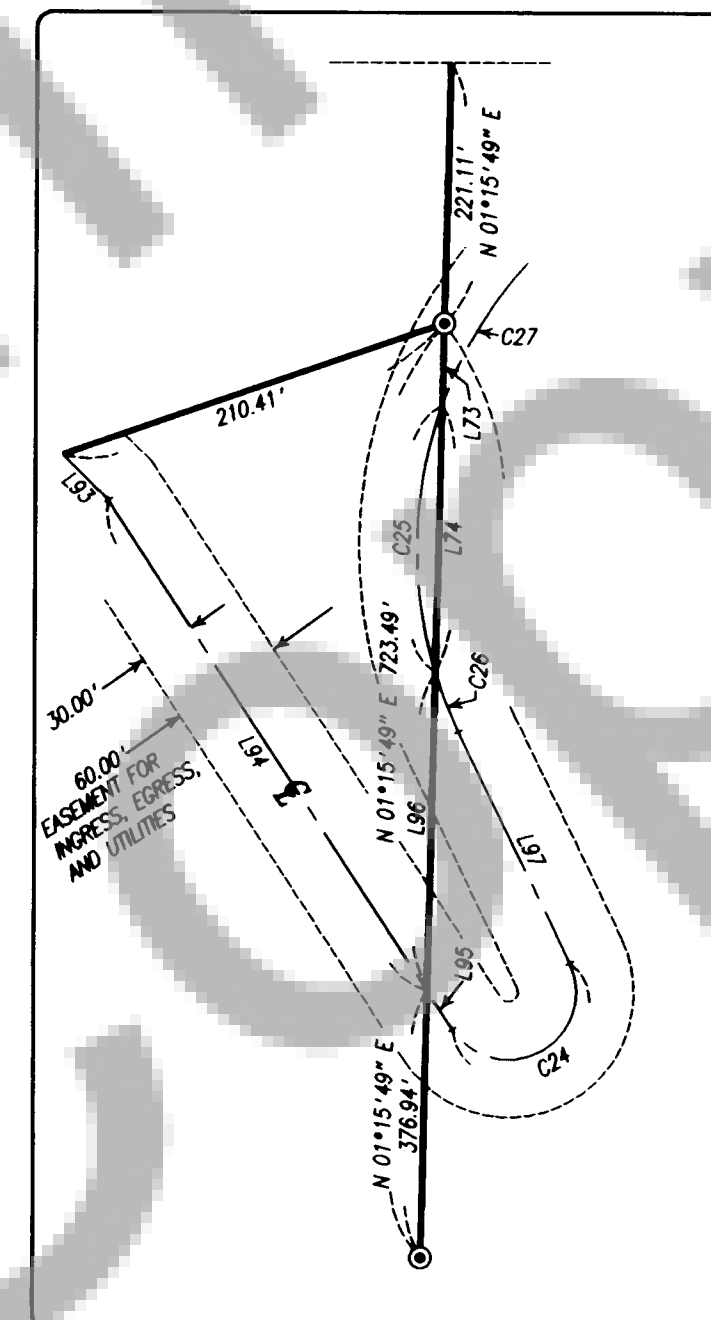
GRANTOR: FRANK AND GLADYS DOHERTY  
GRANTEE: SKAMANIA COUNTY  
RECORDED: BK. 75, PG. 58  
DATE: JUNE 29, 1978

GRANTOR: FRANK DOHERTY  
GRANTEE: FRANK DOHERTY  
RECORDED: BK. 83, PG. 567  
DATE: JUNE 20, 1984

GRANTOR: WALTER MAGUIRE ET UX  
GRANTEE: FRANK DOHERTY  
RECORDED: BK. 30, PG. 547  
DATE: NOV. 6, 1945



## DETAIL C (N.T.S.)



## LEGEND

- SET 5/8" X 30" IRON ROD WITH PLASTIC CAP (OLSON ENG PLS 26352) DURING THIS SURVEY
- SET 1/2" X 24" IRON ROD WITH PLASTIC CAP (OLSON 9025) DURING PREVIOUS SURVEY OF RIVERSIDE ESTATES SUBDIVISION (B/44, 45) REC. JULY 1978
- FOUND MONUMENT AS DESCRIBED DURING THIS SURVEY UNLESS OTHERWISE NOTED

## BASIS OF BEARINGS

ASSUMED BASED ON TRAVERSES BY OLSON ENGINEERING FOR RIVERSIDE ESTATES SUBDIVISION (B/44, 45). HELD N 01°21'56" E FOR THE WEST LINE OF NW 1/4 OF SEC. 29



## SURVEYOR'S CERTIFICATE

THIS MAP CORRECTLY REPRESENTS A SURVEY MADE BY ME OR UNDER MY DIRECTION IN CONFORMANCE WITH THE REQUIREMENTS OF THE SURVEY RECORDING ACT AT THE REQUEST OF

FRANK DOHERTY

in DEC. 2001

*Kurt F. Stoner*  
KURT F. STONER PLS NO. 26352

## AUDITOR'S CERTIFICATE

FILED FOR RECORD THIS 28th DAY OF December 2001  
AT 4:36 P.M. IN BOOK 3 OF SURVEYS AT PAGE 416-7

AT THE REQUEST OF KURT F. STONER

*Deputy County Auditor*  
DEPUTY COUNTY AUDITOR

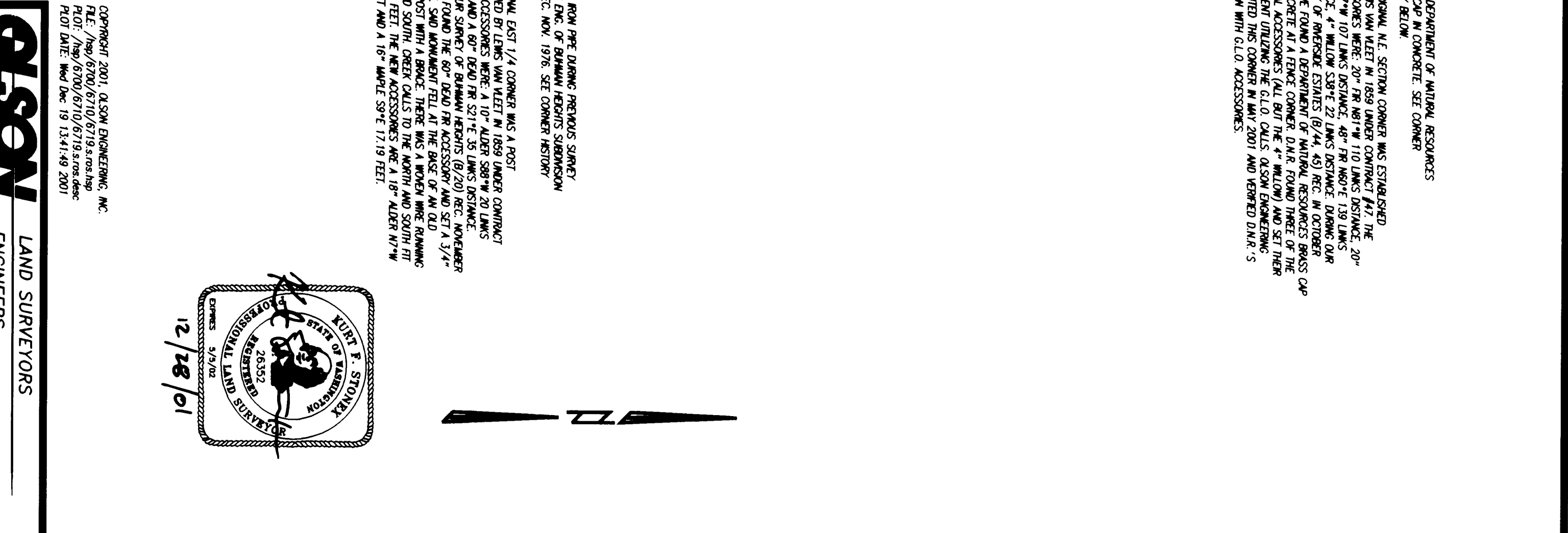
COPYRIGHT 2001, OLSON ENGINEERING, INC.  
FILE: /hsp/6700/6710/6719.s.ros.pg1.hsp  
PLOT: /hsp/6700/6710/6719.s.ros.pg1.desc  
PLOT DATE: Wed Dec 19 13:38:40 2001

**OLSON**  
ENGINEERING INC.  
1111 BROADWAY  
VANCOUVER, WA 98660  
360/695-1385

LAND SURVEYORS  
ENGINEERS


SCALE N/A DRAWN BY MSS  
JOB NO. 6719 CALC. BY VFB  
DATE DECEMBER 2001 SHEET 1 OF 2





COPYRIGHT 2001, OLSON ENGINEERING, INC.  
FILE: /map/6700/6710/6719.s.dwg  
PLOT DATE: Wed Dec 19 13:41:49 2001

LAND SURVEYORS

KURT E. STONEY  
STATE OF MICHIGAN  
PROFESSIONAL LAND SURVEYOR  
26352  
  
EXPIRES 3/9/02  
12/18/01