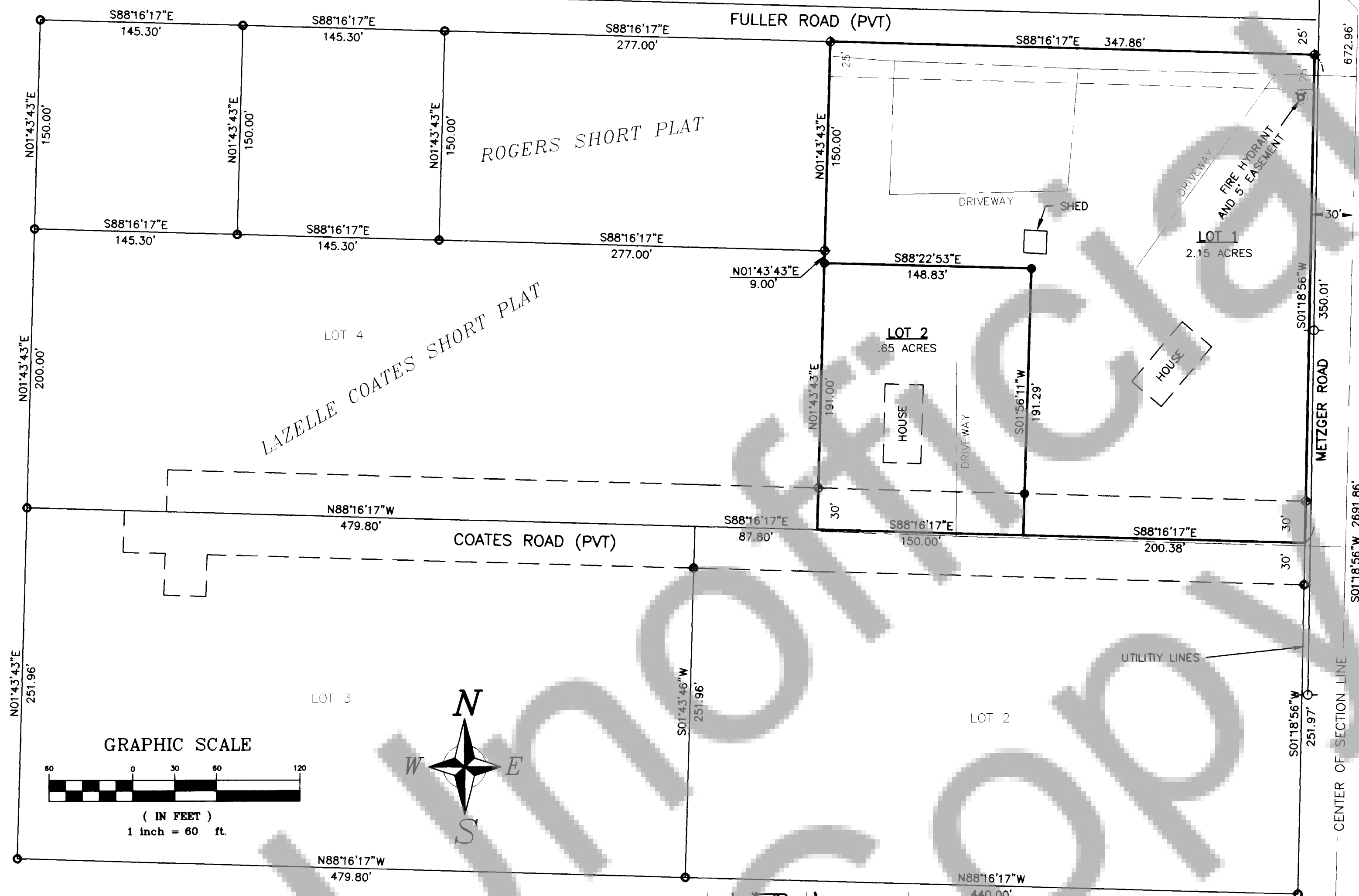


D & D SHORT PLAT-LOT 1 OF LAZELLE COATES SHORT PLAT IN S1/2 NE1/4 SW1/4 SECTION 17, T 3 N, R 8 E, WM



- LEGEND**
- CALCULATED REBAR
 - ⊕ FOUND ALUM CAP MONUMENT
 - SET 5/8"x24" REBAR WITH PLASTIC CAP

REFERENCES

SURVEY #123725 COATES SP

BASIS OF BEARINGS

SURVEY #123725 COATES SP

MONUMENTS VISITED

JANUARY 2001

WARNING

Purchasers of a lot, or lots, in this plat are advised to consult the Skamania County Development Assistance Handbook with regard to private roads because the lot, or lots, in this plat are serviced by private roads. Private roads are not maintained by Skamania County. Lot owners within this plat must pay for the maintenance of the private roads serving this plat, including grading, drainage, snow plowing, etc. The condition of the private road may affect subsequent attempts to divide your lot or lots. Private roads must comply with Skamania County's private road requirements. Maintenance Of Private Roads NOT Paid For By Skamania County.

Private road agreement recorded in Book 217, Page 216, Skamania County Auditor's records.

Land within this short subdivision shall not be further subdivided for a period of five (5) years unless a final plat is filed pursuant to Skamania County Code, Title 17, Subdivisions, Chapter 17.04 through 17.60 inclusive.



ACCURACY STATEMENT(WAC 332-130)

THIS SURVEY WAS PERFORMED USING A LIETZ SET-4 TOTAL STATION, BY FIELD TRAVERSE WITH RELATIVE ACCURACY GREATER THAN 1:5000 MATHEMATICAL ANALYSIS IS BY COMPASS RULE.

Taylor Engineering, Inc.
Civil Design and Land Planning
228 South Columbus Avenue, Suite 104
Goldendale, Washington 98620
PHONE (509) 773-4945, FAX (509) 773-5888, JOB NO. 01-G002

We, owners of the above tract of land, hereby declare and certify this Short Plat to be true and correct to the best of our abilities and that this Short Subdivision has been made with our free consent and in accordance with our desires. Further, we dedicate all Roads as shown, not noted as private, and waive all claims for damages against any governmental agency arising from the construction and maintenance of said roads.

Owner

Owner

Notary Public

10-12-01
Date

Water supply methods and sanitary sewer disposal/on-site sewage disposal methods contemplated for use in this short subdivision conform with current standards.

BRUCE SCHERLING & ASS 10/17/01
S.W. Washington Health District
Date

I, Brant Holman, County Engineer of Skamania County Washington, certify that this plat meets current Skamania County survey requirements; certify that any roads and/or bridges, developed in conjunction with the approved plan, meet current Skamania County development standards for roads; certify that the constructions of any structures, required for and prior to final approval, meets standard engineering specifications; approve the layout of roads and easements; and approve the road names and numbers of such roads.
Brant Holman 10/19/2001
Skamania County Engineer
Date

All taxes and assessments on property involved with this Short Plat have been paid, discharged or satisfied. Tax Lot No. 08-08-17-30-0600-00
Shawn Flood, Deputy 11-21-2001
County Treasurer
Date

The layout of this Short Subdivision complies with Ordinance 1980-07 requirements, and the Short Plat is approved subject to recording in the Skamania County Auditor Office.

Mark Mazeski 10-22-2001
County Planning Department
Date

Surveyor's Certificate

This map correctly represents a survey made by me or under my direction in conformance with the requirements of the Survey Recording Act at the request of:

Date Vance
in 10/14, 2001
Frank E. Childs

STATE OF WASHINGTON)
COUNTY OF SKAMANIA)

I hereby certify that the within instrument of writing filed by:

Mark Mazeski of Planning Dept at 3:46
P.M. November 21, 2001, was

recorded in Book 3 of Short Plats

at Page 397

Peggy B Lowry
Recorder of Skamania County, Washington

Larry M. Gison by J. Lowry
County Auditor