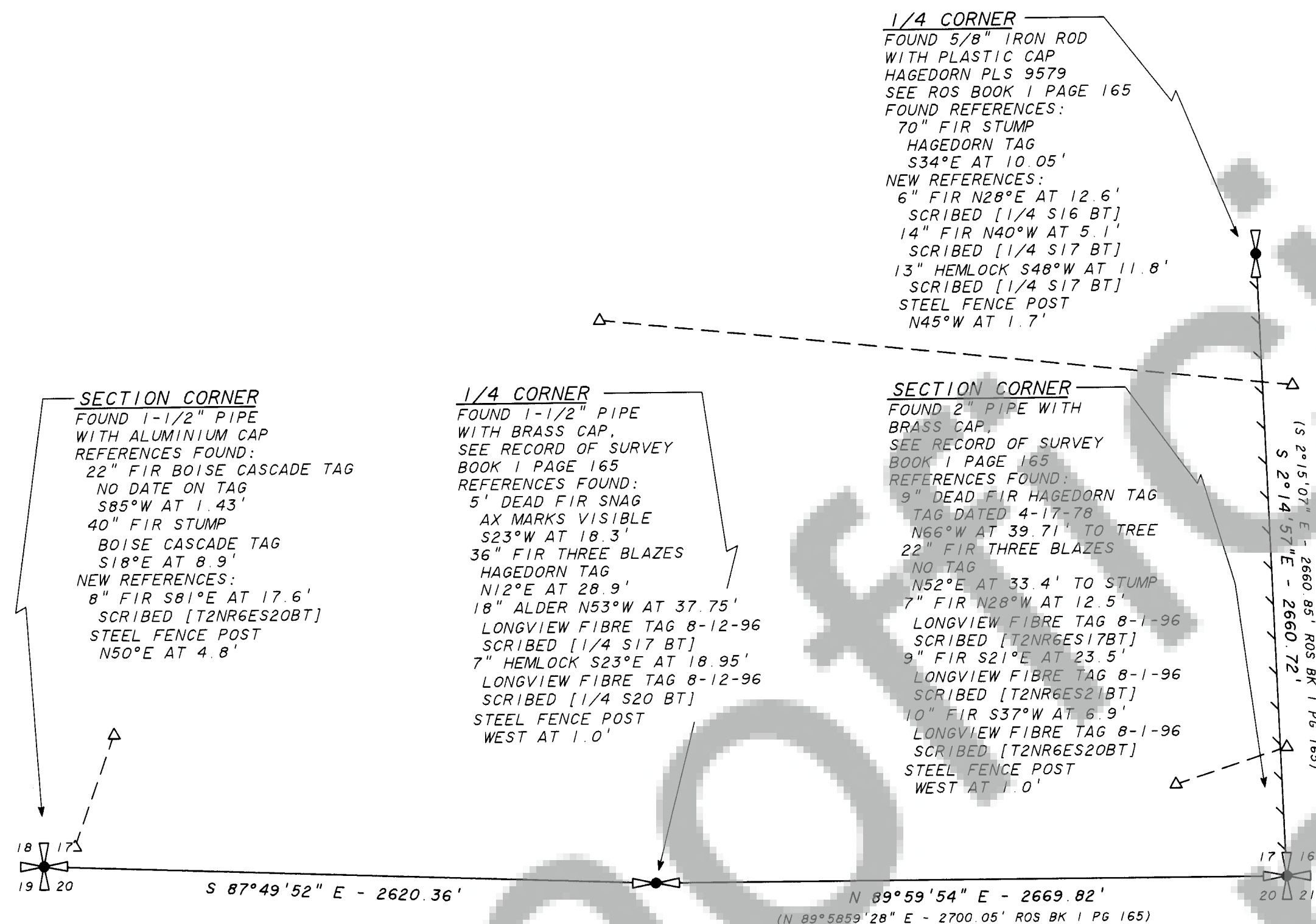


RECORD OF SURVEY
FOR
LONGVIEW FIBRE COMPANY
IN THE SE 1/4 OF
SECTION 17, T 2 N, R 6 E, W.M.
SKAMANIA COUNTY, WASHINGTON

JULY 13, 2001

NARRATIVE

THE PURPOSE OF THIS SURVEY WAS TO LOCATE THE EAST LINE OF THE SE 1/4 OF SECTION 17. THIS SURVEY WAS DONE WITH LEICA 399 GPS RECEIVERS AND A LEICA TC-1105 TOTAL STATION. THE WASHINGTON STATE PLANE COORDINATES, NAD 83 (91), ARE BASED ON TIES TO LONGVIEW FIBRE CONTROL POINTS 601 AND 160. POINTS WERE ESTABLISHED WITH BY STATIC OBSERVATION NEAR THE SW SECTION CORNER, THE SE SECTION CORNER AND THE EAST 1/4 CORNER OF SECTION 17. THE SE SECTION CORNER AND SW SECTION CORNER WERE THEN TIED BY TRAVERSE. A TRAVERSE WAS THEN RUN NORTH FROM THE GPS POINTS NEAR THE SE CORNER TO THE EAST 1/4 CORNER AND CLOSED ON GPS POINTS. THE SOUTH LINE OF SECTION 17 WAS TRAVERSED JULY 1996 WITH A WILD T-16 THEODOLITE AND WILD DI-5 EDM. THE SOUTH 1/4 CORNER LOCATION IS BASED ON THE 1996 TRAVERSE DATA.



BASIS OF BEARING

BEARINGS ARE STATE PLANE
WASHINGTON SOUTH ZONE NAD83 (91)

0' 500' 1000' 1500'

SCALE: 1 INCH = 500 FEET

GRID DISTANCES ARE SHOWN

AUDITOR'S CERTIFICATE

FILED FOR RECORD THIS 3rd DAY OF October, 2001
AT 12:05 PM IN BOOK 3 OF SURVEYS AT PAGE 409
AT THE REQUEST OF LONGVIEW FIBRE COMPANY.

142496
AUDITOR'S FILE NUMBER

Gary M. Olson, PLS
SKAMANIA COUNTY AUDITOR

LEGEND



SECTION CORNER, 1/4 CORNER FOUND AS NOTED

CALCULATED POSITION, NO MONUMENT NOTED

RECORD BEARING AND/OR DISTANCE SEE
RECORD OF SURVEY BOOK 15 AT PAGE 152

LINE MARKED WITH 1/2" X 60" FIBER GLASS RODS
RED AND WHITE RIBBON ALONG LINE BETWEEN RODS
TREES ALONG LINE PAINTED WITH BLUE PAINT

GPS CONTROL POINT

STATE PLANE NAD 83 (91) SOUTH ZONE

POINT	NORTHING	EASTING	CONVERGENCE	SCALE FACTOR
SW CORNER	119955.81	1229842.43	-01°09'58"	1.0000464
S 1/4 CORNER	119856.64	1232460.91	-01°09'32"	1.0000464
SE CORNER	119856.72	1235160.73	-01°09'04"	1.0000464
E 1/4 CORNER	122515.39	1235056.31	-01°09'06"	1.0000443

G P S CONTROL POINTS

POINT	LATITUDE	LONGITUDE	ELL. HEIGHT (M)	GEOID HEIGHT (M, 1996)
LF601	45°39'36.16699" N	122°06'46.95311" W	770.347	-21.621
160	45°40'59.51880" N	122°05'13.05229" W	902.390	-21.504

GEORGE J. FORD, PLS
CERTIFICATE NO. 22330

LONGVIEW FIBRE COMPANY
LONGVIEW, WA 98632



NOTE: NEW REFERENCES
REFERENCES HAVE AN 8" SPIKE AT BASE OF SCRIBE WITH LONGVIEW
FIBRE COMPANY LOCATION TAG ABOVE SCRIBE. ALL ORIENTED TOWARD
MONUMENT. DISTANCE MEASURED TO SPIKE. BEARINGS TO REFERENCES
TAKEN WITH HAND COMPASS HAVING A DECLINATION OF 21° EAST.