

RECORD OF SURVEY
FOR
LONGVIEW FIBRE COMPANY
IN THE NW 1/4 OF THE NE 1/4 OF
SECTION 32, T 3 N, R 5 E, W.M.
SKAMANIA COUNTY, WASHINGTON

JULY 13, 2001

NARRATIVE

THE PURPOSE OF THIS SURVEY WAS TO DETERMINE THE LOCATION OF THE ROCK QUARRY SITE IN RELATION TO SECTION 32. THIS SURVEY WAS DONE WITH LEICA 399 GPS RECEIVERS AND A LEICA TC-1105 TOTAL STATION. THE WASHINGTON STATE PLANE COORDINATES, SOUTH ZONE NAD83 (91), ARE BASED ON TIES TO CLARK COUNTY GPS CONTROL STATIONS 62 (40912) AND 70 (39234). THE NE SECTION CORNER AND 1/4 CORNERS WERE ALL FOUND TO BE AS DESCRIBED ON RECORD OF SURVEY BY OLSON ENGINEERING RECORDED IN BOOK 15 OF SURVEYS AT PAGE 152. CONTROL WAS ESTABLISHED NEAR THE CORNERS USING THE GPS RECEIVER AND THEN TRAVERSES RUN TO THE CORNER. THE EAST 1/4 CORNER WAS OCCUPIED WITH A GPS RECEIVER. THE SECTION SUBDIVISION IS BASED ON THE FOUND CORNERS AS MONUMENTED BY THE OLSON SURVEY.



BASIS OF BEARING

BEARINGS ARE STATE PLANE
WASHINGTON SOUTH ZONE NAD83 (91)

0' 500' 1000' 1500'

SCALE: 1 INCH = 500 FEET

GRID DISTANCES ARE SHOWN

AUDITOR'S CERTIFICATE

FILED FOR RECORD THIS 4th DAY OF September, 2001
AT 2:51 PM IN BOOK 3 OF SURVEYS AT PAGE 406
AT THE REQUEST OF LONGVIEW FIBRE COMPANY.

142219
AUDITOR'S FILE NUMBER

Harry M. Olson by
SKAMANIA COUNTY AUDITOR
H. Olson

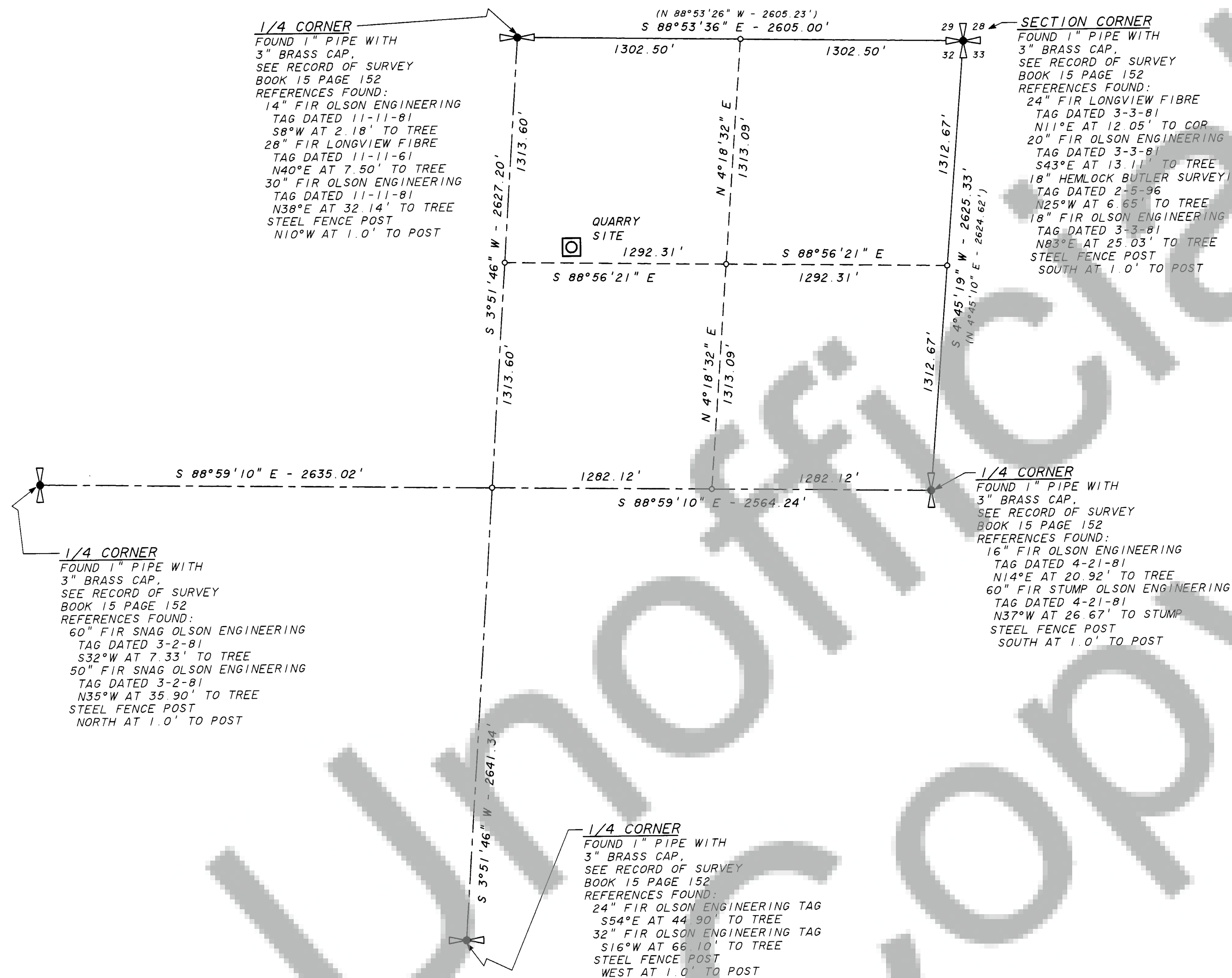
SURVEYOR'S CERTIFICATE

THIS MAP CORRECTLY REPRESENTS A SURVEY MADE BY ME OR UNDER MY DIRECTION IN CONFORMANCE WITH THE REQUIREMENTS OF THE SURVEY RECORDING ACT AT THE REQUEST OF LONGVIEW FIBRE COMPANY IN JUNE 2001.



GEORGE J. FORD, PLS
CERTIFICATE NO. 22330

LONGVIEW FIBRE COMPANY
LONGVIEW, WA 98632



LEGEND



SECTION CORNER, 1/4 CORNER FOUND AS NOTED



CALCULATED POSITION, NO MONUMENT NOTED

RECORD BEARING AND/OR DISTANCE SEE
RECORD OF SURVEY BOOK 15 AT PAGE 152SET 12" SPIKE WITH LATH MARKED
GPS PT. NO. 100

STATE PLANE NAD 83 (91) SOUTH ZONE

POINT	NORTHING	EASTING	CONVERGENCE	SCALE FACTOR
QUARRY SITE	140196.24	1202017.27	-01°14'47"	1.0000316
NE CORNER	141371.57	1204318.32	-01°14'24"	1.0000307
E 1/4 CORNER	138755.27	1204100.67	-01°14'26"	1.0000327
N 1/4 CORNER	141421.88	1201713.81	-01°14'51"	1.0000308
W 1/4 CORNER	138847.28	1198902.21	-01°15'19"	1.0000327
S 1/4 CORNER	136165.31	1201358.87	-01°14'53"	1.0000346