

19

S 88°57'51" E - 2667.32'

[NORTH - 40.00 CHS]
N 0°55'31" E - 2667.32'

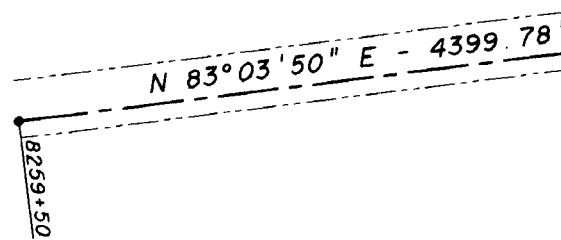
33 34

4 3

N 89°03'48" E - 2667.32'

24

LONGVIEW FIBER
COMPANY
BOOK 112 PAGE
AFN 106251



RECORD OF SURVEY
FOR
LONGVIEW FIBRE COMPANY
IN
SECTIONS 25, 26, 34, 35 AND 36
OF T 3 N, R 6 E, W.M. AND
SECTION 2, T 2 N, R 6 E, W.M.
SKAMANIA COUNTY, WASHINGTON

1 CLOSING SECTION CORNER
SET TYPICAL MONUMENT
FROM FOUND EVIDENCE
NEW REFERENCES:
5" FIR N28°W AT 10.55'
SCRIBED (T3NR6 S22 BT)
6" WHITE FIR N62°E AT 23.7'
SCRIBED (T3NR6 S23 BT)
10" FIR S85°W AT 6.1'
SCRIBED (T3NR6 S22 BT)
STEEL FENCE POST
EAST AT 2.0'

2 STANDARD SECTION CORNER
SET TYPICAL MONUMENT
FROM FOUND EVIDENCE
NEW REFERENCES:
6" WHITE FIR N42°E AT 3.0'
SCRIBED (T3NR6 S26 BT)
13" FIR S80°E AT 27.0'
SCRIBED (T3NR6 S26 BT)
11" FIR S40°W AT 14.1'
SCRIBED (T3NR6 S27 BT)
STEEL FENCE POST
WEST AT 1.0'

FOUND 34" STUMP
N77°E - 44.4'
[N65°30'E - 39.6']
FOUND 30" STUMP
N40°W - 17.4'
[N1°30'W - 16.5']
FOUND STUMP
N25°E - 27.0'
[N1°30'E - 27.7']
FOUND 50" FIR LINE TREE
N89°47'03"E - 492.5'
[EAST - 2.04 CHAINS]
FOUND 30" STUMP
S89°W - 19.6'
[S37°W - 19.8']
FOUND 50" FIR LINE TREE
N89°47'03"E - 2052.6'
[EAST - 2.04 CHAINS]

3 1/4 CORNER
SET TYPICAL MONUMENT
AS PER 1903 GLO RECORD
NEW REFERENCES:
36" FIR STP N56°E AT 27.9'
NO SCRIBE
36" FIR STUMP S68°E AT 24.0'
NO SCRIBE
36" FIR STUMP S62°W AT 6.8'
NO SCRIBE
STEEL FENCE POST
SOUTH AT 1.0'

4 1/4 CORNER
SET TYPICAL MONUMENT
AS PER 1883 GLO RECORD
NEW REFERENCES:
15" FIR N26°E AT 7.55'
SCRIBED (T3NR6 S24 BT)
10" FIR SOUTH AT 8.3'
SCRIBED (T3NR6 S23 BT)
15" FIR N62°W AT 28.4'
SCRIBED (T3NR6 S23 BT)
STEEL FENCE POST
WEST AT 1.0'

6 STANDARD SECTION CORNER
FOUND DNR MONUMENT
SEE ROS BOOK 3 PAGE 3
AFN 106487

4 SECTION CORNER
SET TYPICAL MONUMENT
AS PER 1883 GLO RECORD
NEW REFERENCES:
15" FIR N26°E AT 7.55'
SCRIBED (T3NR6 S24 BT)
10" FIR SOUTH AT 8.3'
SCRIBED (T3NR6 S23 BT)
15" FIR N62°W AT 28.4'
SCRIBED (T3NR6 S23 BT)
STEEL FENCE POST
WEST AT 1.0'

7 CLOSING SECTION CORNER
FOUND DNR MONUMENT
SEE ROS BOOK 3 PAGE 3
AFN 106487

5 1/4 CORNER
SET TYPICAL MONUMENT
AS PER 1883 GLO RECORD
NEW REFERENCES:
15" FIR N26°E AT 7.55'
SCRIBED (T3NR6 S24 BT)
10" FIR SOUTH AT 8.3'
SCRIBED (T3NR6 S23 BT)
15" FIR N62°W AT 28.4'
SCRIBED (T3NR6 S23 BT)
STEEL FENCE POST
WEST AT 1.0'

8 1/4 CORNER
SET TYPICAL MONUMENT
FROM FOUND EVIDENCE
FOUND REFERENCES:
REMAINS OF HEMLOCK ROOTS
40" FIR S60°W AT 23.1'
NO VISIBLE MARKS ON STUMP
NEW REFERENCES:
16" HEMLOCK S40°E AT 0.9'
SCRIBED (1/4 S26 BT)
26" HEMLOCK S52°W AT 2.1'
SCRIBED (1/4 S27 BT)
STEEL FENCE POST
SOUTH AT 3.0'

4 SECTION CORNER
SET TYPICAL MONUMENT
AS PER 1883 GLO RECORD
NEW REFERENCES:
15" FIR N26°E AT 7.55'
SCRIBED (T3NR6 S24 BT)
10" FIR SOUTH AT 8.3'
SCRIBED (T3NR6 S23 BT)
15" FIR N62°W AT 28.4'
SCRIBED (T3NR6 S23 BT)
STEEL FENCE POST
WEST AT 1.0'

13 SECTION CORNER
SET TYPICAL MONUMENT
FROM FOUND EVIDENCE
FOUND REFERENCES:
48" SPRUCE N48°E AT 69.18'
SCRIBE VISIBLE
54" FIR STUMP S48°E AT 43.8'
NO MARKS VISIBLE
30" FIR STUMP N50°W AT 10.6'
AXING VISIBLE
NEW REFERENCES:
28" HEMLOCK S44°W AT 24.2'
SCRIBED (T3NR6 S34 BT)
16" HEMLOCK N62°E AT 10.5'
SCRIBED (T3NR6 S26 BT)
STEEL FENCE POST
NORTH AT 1.0'

10 1/4 CORNER
SET TYPICAL MONUMENT
ON LINE 0.9 CHAINS
SOUTH OF CREEK
NEW REFERENCES:
10" ALDER N02°E AT 14.9'
BARK SCRIBED (1/4 S25 BT)
9" FIR N30°W AT 19.0'
SCRIBED (1/4 S26 BT)
24" ALDER S77°E AT 27.0'
BARK SCRIBED (1/4 S25 BT)
STEEL FENCE POST
SOUTH AT 2.0'

14 1/4 CORNER
SET TYPICAL MONUMENT
AT PROPORTION POSITION
NEW REFERENCES:
22" FIR N41°W AT 17.5'
SCRIBED (1/4 S26 BT)
14" FIR S5°E AT 21.2'
SCRIBED (1/4 S35 BT)
STEEL FENCE POST
NORTH AT 1.0'

10 1/4 CORNER
SET TYPICAL MONUMENT
ON LINE 0.9 CHAINS
SOUTH OF CREEK
NEW REFERENCES:
10" ALDER N02°E AT 14.9'
BARK SCRIBED (1/4 S25 BT)
9" FIR N30°W AT 19.0'
SCRIBED (1/4 S26 BT)
24" ALDER S77°E AT 27.0'
BARK SCRIBED (1/4 S25 BT)
STEEL FENCE POST
SOUTH AT 2.0'

15 EAST 1/16 CORNER
SET TYPICAL MONUMENT
NEW REFERENCES:
16" D. FIR N25°W AT 16.3'
SCRIBED (E1/16 S26 BT)
14" D. FIR S4°W AT 6.1'
SCRIBED (E1/16 S35 BT)
STEEL FENCE POST
NORTH AT 3.0'

12 1/4 CORNER
FOUND DNR MONUMENT
3" BRASS CAP IN CONCRETE
FOUND REFERENCES:
12" WHITE FIR N41°W AT 6.4'
DNR TAG DATED 1966
NEW REFERENCES:
15" WHITE FIR N73°W AT 8.3'
SCRIBED (1/4 S27 BT)
15" HEMLOCK N8°W AT 10.5'
SCRIBED (1/4 S27 BT)
STEEL FENCE POST
EAST AT 2.0'

11 1/4 CORNER
CALCULATED POSITION
SEE ROS BOOK 3 PAGE 3
AFN 106487

10 1/4 CORNER
SET TYPICAL MONUMENT
ON LINE 0.9 CHAINS
SOUTH OF CREEK
NEW REFERENCES:
10" ALDER N02°E AT 14.9'
BARK SCRIBED (1/4 S25 BT)
9" FIR N30°W AT 19.0'
SCRIBED (1/4 S26 BT)
24" ALDER S77°E AT 27.0'
BARK SCRIBED (1/4 S25 BT)
STEEL FENCE POST
SOUTH AT 2.0'

6 SECTION CORNER
SET TYPICAL MONUMENT
AS PER 1883 GLO RECORD
NEW REFERENCES:
15" FIR S68°W AT 15.55'
SCRIBED (T3NR6 S35 BT)
11" FIR S28°E AT 20.4'
SCRIBED (T3NR6 S36 BT)
7" FIR EAST AT 8.4'
SCRIBED (T3NR6 S25 BT)
12" FIR N18°W AT 1.0'
SCRIBED (T3NR6 S26 BT)
STEEL FENCE POST
SOUTH AT 2.0'

6 SECTION CORNER
SET TYPICAL MONUMENT
AS PER 1883 GLO RECORD
NEW REFERENCES:
15" FIR S68°W AT 15.55'
SCRIBED (T3NR6 S35 BT)
11" FIR S28°E AT 20.4'
SCRIBED (T3NR6 S36 BT)
7" FIR EAST AT 8.4'
SCRIBED (T3NR6 S25 BT)
12" FIR N18°W AT 1.0'
SCRIBED (T3NR6 S26 BT)
STEEL FENCE POST
SOUTH AT 2.0'

6 SECTION CORNER
SET TYPICAL MONUMENT
AS PER 1883 GLO RECORD
NEW REFERENCES:
15" FIR S68°W AT 15.55'
SCRIBED (T3NR6 S35 BT)
11" FIR S28°E AT 20.4'
SCRIBED (T3NR6 S36 BT)
7" FIR EAST AT 8.4'
SCRIBED (T3NR6 S25 BT)
12" FIR N18°W AT 1.0'
SCRIBED (T3NR6 S26 BT)
STEEL FENCE POST
SOUTH AT 2.0'

6 SECTION CORNER
SET TYPICAL MONUMENT
AS PER 1883 GLO RECORD
NEW REFERENCES:
15" FIR S68°W AT 15.55'
SCRIBED (T3NR6 S35 BT)
11" FIR S28°E AT 20.4'
SCRIBED (T3NR6 S36 BT)
7" FIR EAST AT 8.4'
SCRIBED (T3NR6 S25 BT)
12" FIR N18°W AT 1.0'
SCRIBED (T3NR6 S26 BT)
STEEL FENCE POST
SOUTH AT 2.0'

AUDITOR'S CERTIFICATE

FILED FOR RECORD THIS 1st DAY OF March, 2001,
AT 9:01AM IN BOOK 3 OF SURVEYS AT PAGE 380-383
AT THE REQUEST OF LONGVIEW FIBRE COMPANY.

AUDITOR'S FILE NUMBER 140461
Blair M. Olson
SKAMANIA COUNTY AUDITOR

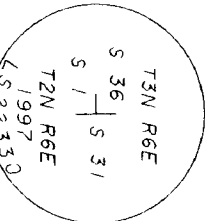
SURVEYOR'S CERTIFICATE

THIS MAP CORRECTLY REPRESENTS A SURVEY MADE BY ME OR
UNDER MY DIRECTION IN CONFORMANCE WITH THE REQUIREMENTS
OF THE SURVEY RECORDING ACT AT THE REQUEST OF LONGVIEW
FIBRE COMPANY IN APRIL 1997

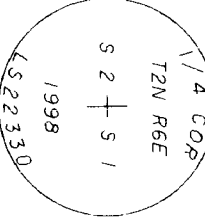
GEORGE J. FORD, PLS
CERTIFICATE NO. 22330
LONGVIEW FIBRE COMPANY
LONGVIEW, WASHINGTON



SECTION CORNER
SET TYPICAL MONUMENT
AS PER 1883 GLO RECORD
FOUND REFERENCES:
36" FIR STUMP N50°E AT 6.6'
36" FIR STUMP S16°E AT 10.5'
40" FIR STUMP S26°W AT 19.6'
NAIL IN BLAZE
NEW REFERENCES:
18" FIR STUMP N20°W AT 53.3'
20" FIR STUMP N64°W AT 52.5'
NO SCRIBE
STEEL FENCE POST
NORTH AT 1.0'



1/4 CORNER
SET TYPICAL MONUMENT
AS PER 1883 GLO RECORD
NEW REFERENCES:
21" W FIR N65°E AT 19.6'
12" D FIR S43°W AT 13.2'
7" W FIR S89°W AT 8.3'
SCRIBED (1/4 S2 BT)
STEEL FENCE POST
SOUTH AT 1.0'



SECTION CORNER
FOUND 6" X 6" X 12"
CONCRETE MONUMENT
FOUND REFERENCES:
36" FIR STUMP S41°W AT 7.3'
DNR TAG, DATED 10/2/51
NEW REFERENCES:
15" FIR N26°E AT 19.0'
SCRIBED (12WRE S1 BT)
8" HEMLOCK S82°E AT 14.8'
15" FIR N16°W AT 6.3'
SCRIBED (12WRE S2 BT)
STEEL FENCE POST
SOUTH AT 2.0'

RECORD OF SURVEY
FOR
LONGVIEW FIBRE COMPANY
IN
SECTIONS 25, 26, 34, 35 AND 36
OF T 3 N, R 6 E, W.M. AND
SECTION 2, T 2 N, R 6 E, W.M.
SKAMANIA COUNTY, WASHINGTON

NARRATIVE

THE NORTH LINE OF T 2 N, R 6 E, W.M. THE LINE BETWEEN SECTIONS 1 AND 2, THE SUBDIVISION OF SECTIONS 25, 26, 12, 33, 34, 35 AND 36 OF T 3 N, R 6 E, WAS DONE BY CHARLES E. SEARS UNDER CONTRACT 287, 1883. THE EAST LINE OF SECTIONS 25 AND 36 AND THE NORTH LINES OF SECTIONS 25, 26, 27, AND 28 WERE RERAN BY ROBERT F. WHITHAM UNDER CONTRACT 600, 1903.

THE PURPOSE OF THIS SURVEY WAS TO LOCATE LONGVIEW FIBRE'S PROPERTY LINES IN SECTION 26, 34 AND 35, T 3 N, R 6 E, W.M. AND THE EAST LINE OF SECTION 2, T 2 N, R 6 E, W.M. NORTH OF THE POWER LINE. THIS SURVEY WAS DONE WITH LEICA 399 GPS RECEIVERS AND A LEICA TC805 TOTAL STATION. A SECONDARY CONTROL NET WAS ESTABLISHED BY DIFFERENTIAL GPS. THE NET WAS THEN ADJUSTED. TERTIARY CONTROL POINTS WERE THEN ESTABLISHED NEAR CORNERS AND AT POINTS TO BEGIN AND/OR CLOSE TRAVERSES. THE TERTIARY CONTROL POINTS WERE MEAN VALUES DERIVED FROM THE SECONDARY CONTROL TRAVERSES WERE EITHER CLOSED LOOPS OR CLOSED ON GPS CONTROL POINTS.

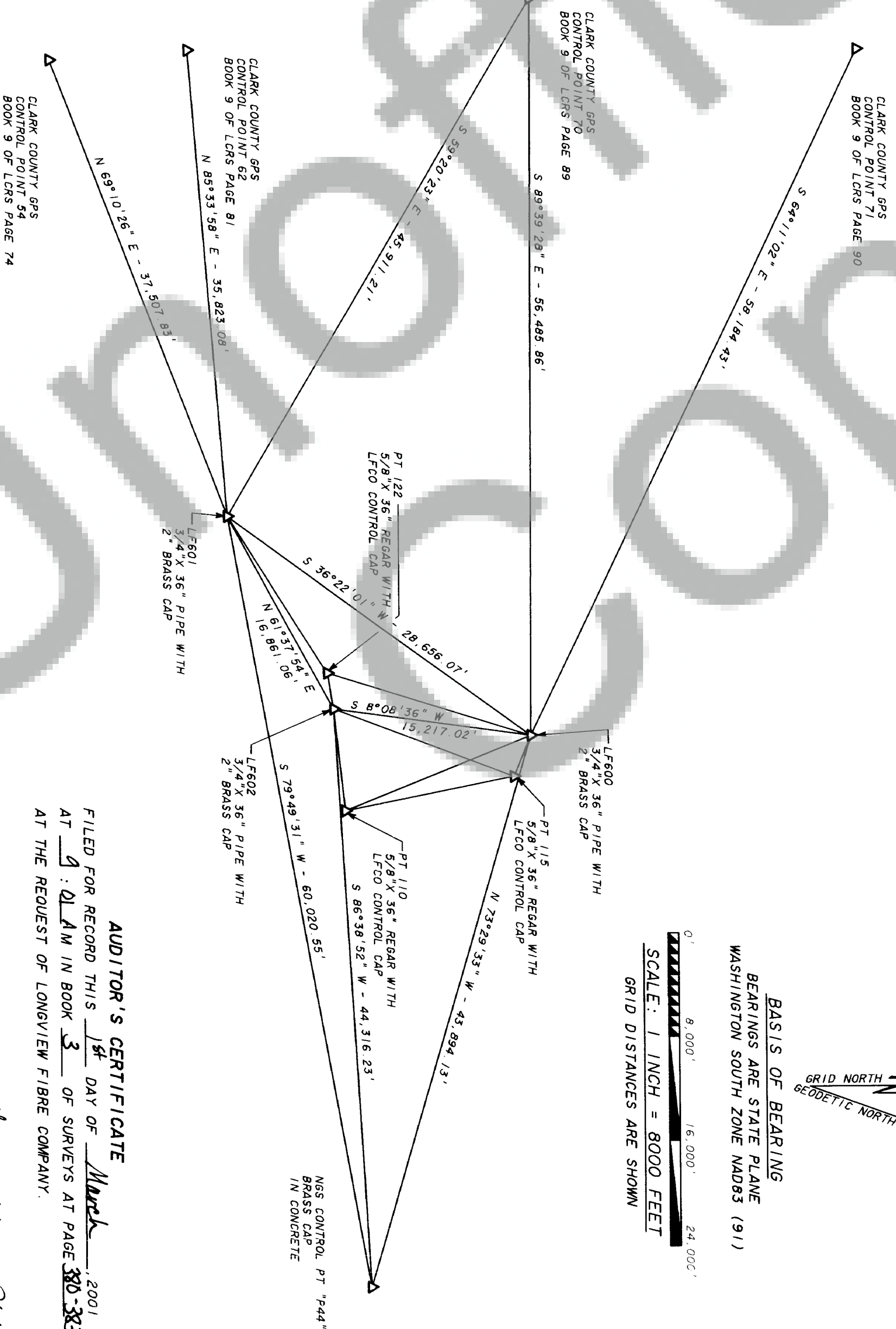
NOTE: NEW REFERENCES
REFERENCES HAVE AN 8" SPIKE AT BASE OF SCRIBE WITH LONGVIEW FIBRE COMPANY LOCATION TAG ABOVE SCRIBE. ALL ORIENTED TOWARD MONUMENT. DISTANCES MEASURED TO SPIKE. BEARINGS TO REFERENCES TAKEN WITH HAND COMPASS HAVING A DECLINATION OF 21°E.

STATE PLANE NAD83 (91) SOUTH ZONE
CORNER NORTHING EASTING CONVERGENCE SCALE FACTOR

1	145957.94	1245767.57	-01°07'21"	1.0000268
2	145951.74	1245903.21	-01°07'19"	1.0000268
3	145893.81	1248664.61	-01°06'51"	1.0000268
4	145988.41	1251148.13	-01°06'26"	1.0000267
5	145998.01	1253699.80	-01°06'00"	1.0000267
6	145939.77	1256350.66	-01°05'32"	1.0000267
7	145866.54	1256350.45	-01°05'32"	1.0000268
8	145389.45	1245870.05	-01°07'19"	1.0000287
9	143364.72	1248570.11	-01°06'52"	1.0000287
10	143341.35	1251121.61	-01°06'25"	1.0000286
11	143299.09	1256310.88	-01°05'32"	1.0000286
12	140825.81	1243225.89	-01°07'46"	1.0000306
13	140802.11	1245853.81	-01°07'19"	1.0000305
14	140825.44	1248475.23	-01°06'52"	1.0000305
15	140837.10	1249785.94	-01°06'39"	1.0000305
16	140848.77	1251096.64	-01°06'25"	1.0000304
17	140636.26	1256271.22	-01°05'32"	1.0000305
18	140661.51	1256271.02	-01°05'32"	1.0000305
19	138196.04	1240529.57	-01°08'13"	1.0000325
20	138147.87	1243194.53	-01°07'45"	1.0000325
21	138100.17	1245832.50	-01°07'19"	1.0000325
22	138177.53	1249670.87	-01°06'39"	1.0000324
23	138203.04	1250936.46	-01°06'26"	1.0000324
24	135529.07	1240486.50	-01°08'13"	1.0000345
25	135572.84	1243164.38	-01°07'45"	1.0000344
26	135591.98	1245805.74	-01°07'18"	1.0000343
27	135566.15	1248337.69	-01°06'52"	1.0000343
28	135566.65	1249640.28	-01°06'39"	1.0000343
29	135565.15	1250942.87	-01°06'26"	1.0000343
30	135559.12	1256153.23	-01°05'28"	1.0000342
31	132825.44	1250864.93	-01°06'26"	1.0000363
32	130112.82	1250787.87	-01°06'26"	1.0000383

STATE PLANE NAD83 (91) SOUTH ZONE
CORNER NORTHING EASTING CONVERGENCE SCALE FACTOR

LF600	146435.12	1244970.39	-01°07'29"	1.0000265
LF601	123360.19	1227978.69	-01°10'18"	1.0000438
LF602	131371.53	1242814.91	-01°07'48"	1.0000375
PT115	145119.13	1248087.93	-01°06'57"	1.0000274
PT110	132213.76	1250627.01	-01°06'28"	1.0000368
PT122	130905.89	1240041.39	-01°08'16"	1.0000379



BASIS OF BEARING
BEARINGS ARE STATE PLANE
WASHINGTON SOUTH ZONE NAD83 (91)
SCALE: 1 INCH = 8000 FEET
GRID DISTANCES ARE SHOWN

AUDITOR'S CERTIFICATE
FILED FOR RECORD THIS 1st DAY OF March, 2001
AT 9:01 AM IN BOOK 3 OF SURVEYS AT PAGE 380-383
AT THE REQUEST OF LONGVIEW FIBRE COMPANY.

AUDITOR'S FILE NUMBER
146461
Mary M. Moore by Deputy
SKAMANIA COUNTY AUDITOR Upday

SURVEYOR'S CERTIFICATE
THIS MAP CORRECTLY REPRESENTS A SURVEY MADE BY ME OR UNDER MY DIRECTION IN CONFORMANCE WITH THE REQUIREMENTS OF THE SURVEY RECORDING ACT AT THE REQUEST OF LONGVIEW FIBRE COMPANY IN APRIL, 1997.

GEORGE J. FORD, PLS
CERTIFICATE NO. 22330
LONGVIEW FIBRE COMPANY
LONGVIEW, WASHINGTON

