

## NOTE "2":

THE COUNTY ROAD AS LOCATED AND SHOWN IN RS 3 (1973) WAS A NARROWER, GRAVEL ROAD. IT HAS SUBSEQUENTLY BEEN STRAIGHTENED AND PAVED BY THE SKAMANIA COUNTY ROAD DEPT. NO FORMAL ESTABLISHMENT WAS REPORTED BY THE SKAMANIA COUNTY ENGINEER'S OFFICE, BUT THEY CONSIDER IT TO BE A 60' R/W. WE HAVE HELD THE PRESENT ACTUAL CENTERLINE TO CONTROL THE R/W BOUNDARIES.

## DEED REFERENCE

ZUMSTEIN TO PAZ  
DEED BOOK 186, PAGE 878  
AND  
ZUMSTEIN TO PAZ  
DEED BOOK 194, PAGE 476

FILE FOR RECORD  
SKAMANIA CO. WASH  
BY

DEC 3 40 PM '00

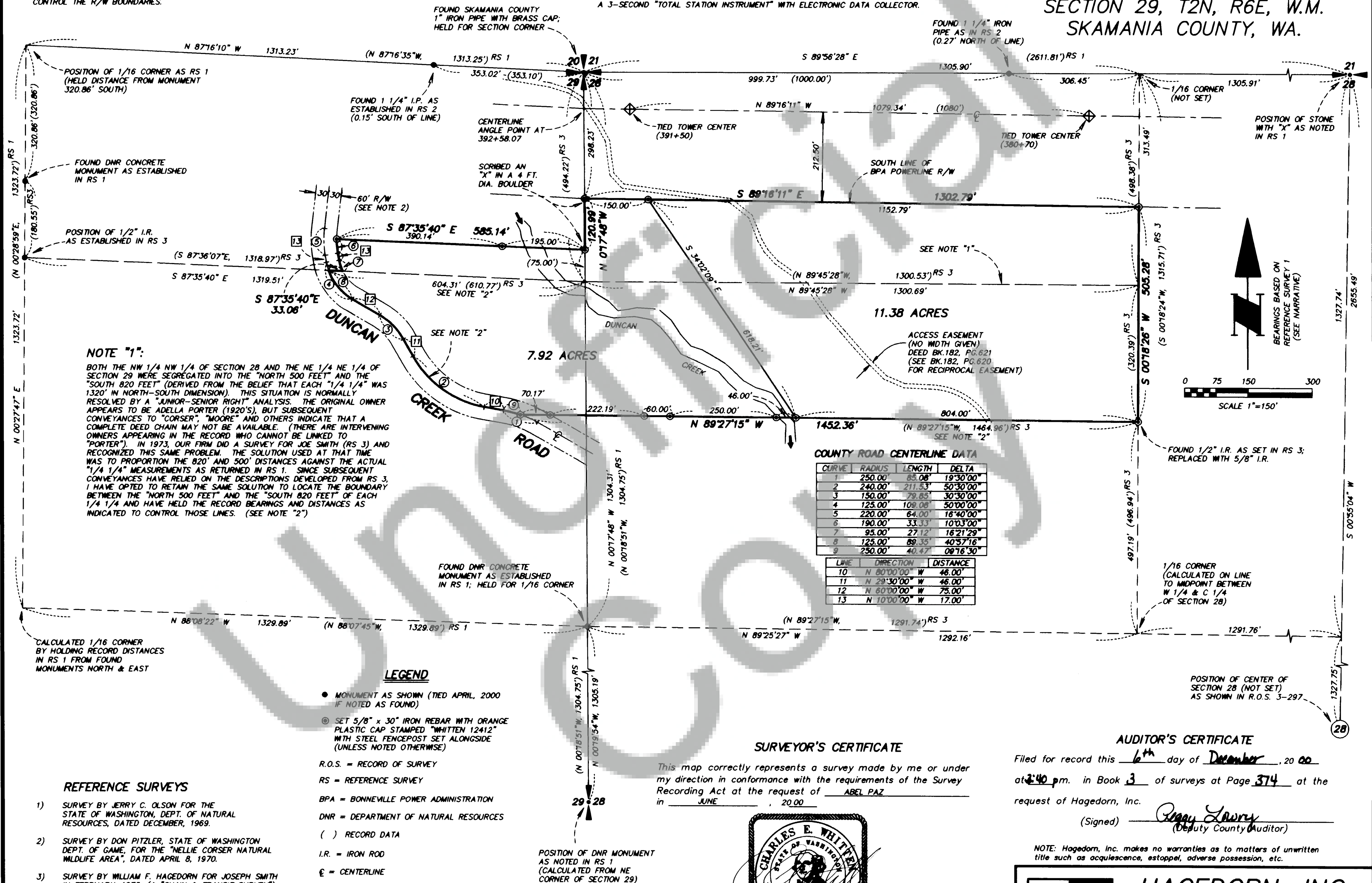
RECTOR  
GARY M. OLSON

## NARRATIVE

THE PURPOSE OF THIS SURVEY WAS TO LOCATE AND MONUMENT THE PERIMETER OF THE "AGGREGATE PAZ OWNERSHIP" AS CITED AND TO ADJUST THE BOUNDARY BETWEEN TAX LOTS 400 AND 501 AS SHOWN. A RANDOM TRAVERSE WAS ORIENTED TO THE COORDINATE SYSTEM OF RS 1 BY TIES TO THE NW CORNER OF SECTION 28 AND IRONS RECOVERED FROM R.O.S. 3-297 NEAR THE C-S 1/16 CORNER OF SECTION 28. OTHER TRAVERSES WERE CLOSED AGAINST THE INITIAL CIRCUIT WITH RADIAL TIES TO OTHER CONTROLLING MONUMENTS. NEW CORNERS ESTABLISHED HEREIN WERE SET RADIALY FROM THE ABOVE TRAVERSE, WHICH MET THE REQUIREMENTS OF WAC 332-130-090. FIELD EQUIPMENT USED WAS A 3-SECOND "TOTAL STATION INSTRUMENT" WITH ELECTRONIC DATA COLLECTOR.

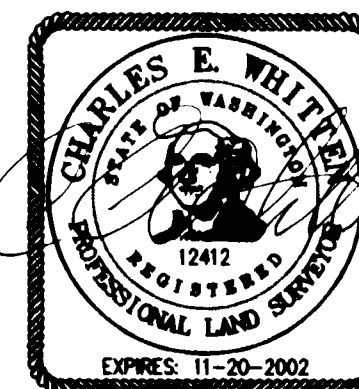
# SURVEY

in the NW 1/4 NW 1/4  
of SECTION 28 and  
the NE 1/4 NE 1/4 of  
SECTION 29, T2N, R6E, W.M.  
SKAMANIA COUNTY, WA.



## SURVEYOR'S CERTIFICATE

This map correctly represents a survey made by me or under my direction in conformance with the requirements of the Survey Recording Act at the request of ABEL PAZ in JUNE, 2000



## AUDITOR'S CERTIFICATE

Filed for record this 6<sup>th</sup> day of December, 2000 at 2:40 p.m. in Book 3 of surveys at Page 374 at the request of Hagedorn, Inc.

(Signed) *Rogay Lawry*  
Deputy County Auditor

NOTE: Hagedorn, Inc. makes no warranties as to matters of unwritten title such as acquiescence, estoppel, adverse possession, etc.



**HAGEDORN, INC.**

1924 Broadway Vancouver, Wa. 98663  
Ph: (360) 696-4428 (503) 283-6778

SCALE: 1"=150'  
DATE: 11/2/00  
JOB NO.: 00-117

CALC. BY: CEW  
DRAWN BY: CC  
CHECKED BY: DLS

SHEET 1 OF 1