

RECORD OF SURVEY  
IN  
NE 1/4 NW 1/4  
AND  
NW 1/4 NE 1/4  
SEC. 29, T3N, R5E, W.M.,  
IN  
SKAMANIA COUNTY, WA.

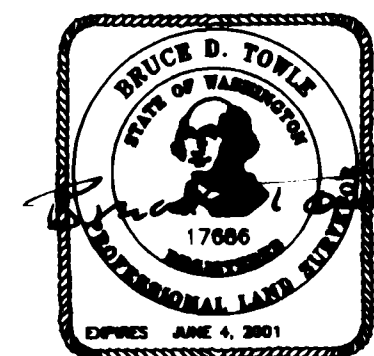
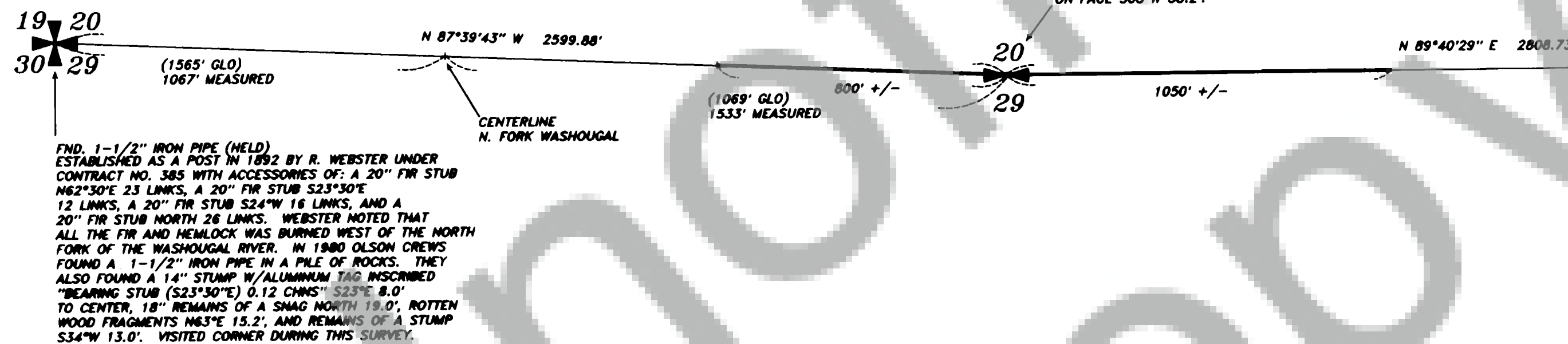
## LEGEND

— MARKED SECTION LINE  
— SECTION LINE

FND. 1-1/4" IRON PIPE DURING THIS SURVEY.  
ESTABLISHED AS A POST IN 1892 BY R. WEBSTER UNDER CONTRACT NO. 385 WITH ACCESSORIES OF: A 48" FIR S03°15'W 58 LINKS AND A 36" FIR N45°E 38 LINKS. IN 1980 OLSON CREWS FOUND THE 1-1/4" PIPE IN A MOUND OF STONE WITH THE ACCESSORIES OF: A 36" FIR SNAG W/ "X" BLAZED ON FACE N44°E 26.6' AND A 48" FIR SNAG W/ "X" BLAZED ON FACE S05°W 38.2'.

BASIS OF BEARINGS: WASHINGTON STATE COORDINATE SYSTEM (SOUTH ZONE) BASED ON TIES TO SEDUM, LARCH (OREGON), ROCKY BUTTE AND BALD TOP.

SET 1" IRON PIPE DURING PREVIOUS SURVEY (15/152) REC. DEC. 1982. SEE CORNER NOTE BELOW.



515100

## SURVEYOR'S CERTIFICATE

This map correctly represents a survey made by me or under my direction in conformance with the requirements of the Survey Recording Act of the request of  
FRED PICKERING

in MAY 2000

Bruce D. Towle  
BRUCE D. TOWLE 17686

## AUDITOR'S CERTIFICATE

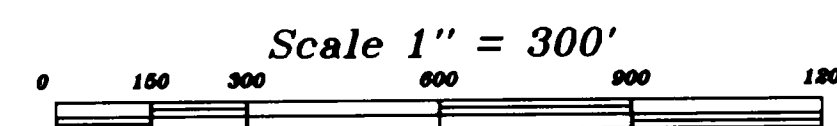
Filed for record this 25<sup>th</sup> day of May 2000 at 4:20 PM  
in Book 3 of surveys at Page 352 at the request of  
Olson Engineering

Peggy Lowry  
DEPLAY COUNTY AUDITOR

COPYRIGHT 2000, OLSON ENGINEERING INC.  
FILE: 6700/6710/6714.s.ros.hsp

**OLSON** LAND SURVEYORS  
ENGINEERS  
ENGINEERING INC.  
1111 BROADWAY  
VANCOUVER, WA 98660  
360/695-1385

SCALE 1" = 300'  
JOB NO. 6714  
DATE MAY 2000  
DRAWN BY HSR  
CALC. BY HSR  
SHEET 1 OF 1



## NARRATIVE

THE PURPOSE OF THIS SURVEY WAS TO MARK THE SECTION LINE WITH PAINT AND BLAZES FROM THE NORTH QUARTER CORNER TO APPROXIMATELY 800 FEET WESTERLY AND 1100 FEET EASTERLY. IN 1980 OLSON CREWS FOUND A PIPE AT THE NORTHWEST SECTION CORNER, A PIPE AT THE NORTH QUARTER CORNER AND A STUMP PATTERN OF THE GLO ACCESSORIES AT THE NORTHEAST SECTION CORNER. DURING THE SECTION SURVEY THE GLO TIED A RIDGE TOP BETWEEN THE NORTHEAST SECTION CORNER AND THE NORTH QUARTER CORNER. FROM THE NORTHEAST SECTION CORNER THE DISTANCE TO THE RIDGE TOP IS 1745' (GLO) V 1782' (OE). THE GLO ALSO TIED THE NORTH FORK OF THE WASHOUGAL RIVER BETWEEN THE NORTH QUARTER CORNER AND THE NORTHWEST SECTION CORNER. THESE DISTANCES ARE OPPOSITE OF THE GLO RETURN (SEE DIA.). SINCE WEBSTER RAN THE NORTH SECTION LINE EAST-RANDOM AND WEST-TRUE THIS WOULD SHOW THE CORRECT DISTANCE TO THE NORTH FORK OF THE RIVER MAY NOT HAVE BEEN SUBTRACTED PROPERLY IN HIS NOTES TO PLACE THE RIVER WHERE IT TRULY IS.

## NE CORNER SECTION 29

ESTABLISHED AS A POST IN A MOUND OF STONE IN 1892 BY R. WEBSTER UNDER CONTRACT NO. 385 WITH ACCESSORIES OF: A 36" FIR N43°30'E 32 LINKS, A 24" HEMLOCK S12°30'E 55 LINKS, A 12" HEMLOCK S79°30'W 30 LINKS, AND A 24" FIR N21°W 18 LINKS. IN 1980, OLSON CREWS SET A 1" IRON PIPE WITH BRASS CAP AT RECORD BEARING AND DISTANCE FROM THE ORIGINAL BEARING TREES DURING PREVIOUS SURVEY (15/152) REC. DEC. 1982. NOT VISITED DURING THIS SURVEY.

## SURVEY REFERENCE

SURVEY BY OLSON ENGINEERING FOR LONGVIEW FIBRE COMPANY AND THE WASHINGTON DEPT. OF NATURAL RESOURCES (15/152) REC. DEC. 1982

## PROCEDURE

TRAVERSES WERE RUN WITH AN HP 3820 TOTAL STATION (3") IN 1980 AND A WILD T-1000 (3") WITH A WILD DI-1000 EDM IN 1999 AND ADJUSTED BY COMPASS RULE.

## DEED REFERENCE

GRANTOR: MABEL MCGOWAN (ESTATE)  
GRANTEE: KATHERINE GARVIN  
A.F. NO.: BOOK 68, PAGE 356  
DATE: FEB. 13, 1975

352

AGE

SURVEYS

3

BOOK