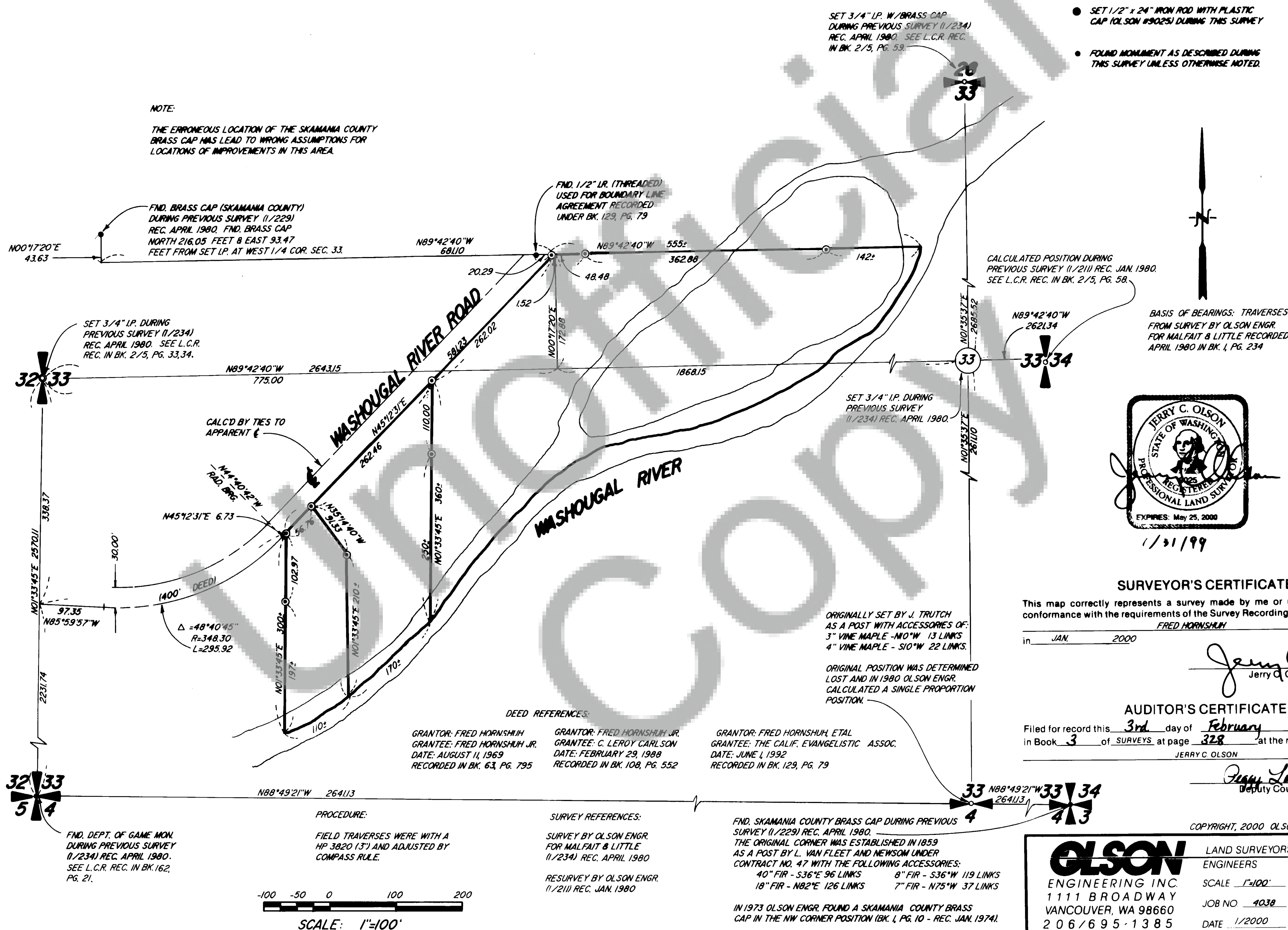


RECORD OF SURVEY  
IN THE  
SW 1/4 NW 1/4 AND  
NW 1/4 SW 1/4  
SEC. 33, T2N, R5E, W.M.,  
SKAMANIA COUNTY, WA.



**OLSON**

ENGINEERING INC  
1111 BROADWAY  
VANCOUVER, WA 98660  
206/695-1385

LAND SURVEYORS  
ENGINEERS

SCALE 1"=100' DRAWN BY SAW  
JOB NO 4038 CALC BY JET  
DATE 1/2000 SHEET 1 OF 1