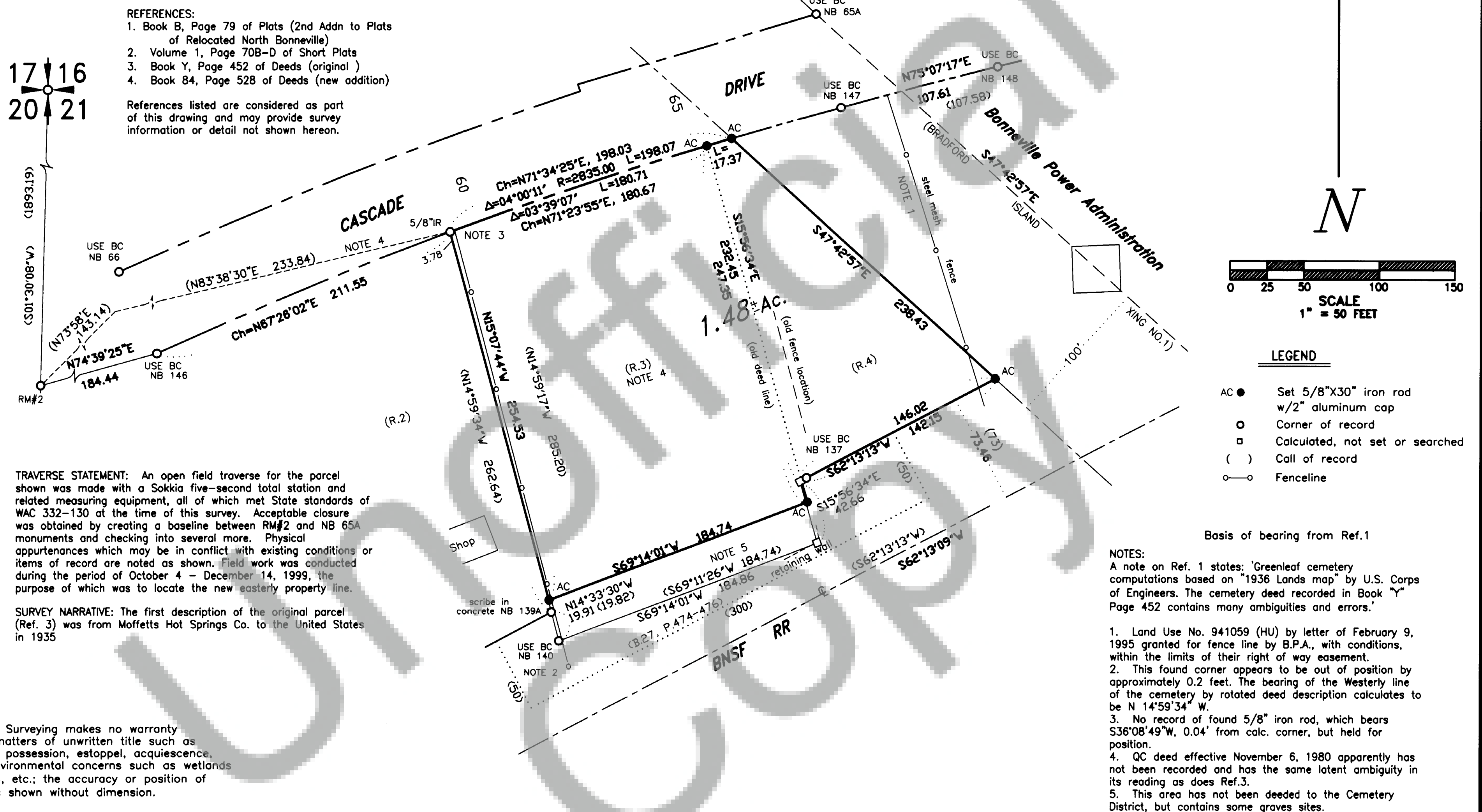


SURVEY in SW $\frac{1}{4}$ NW $\frac{1}{4}$ SEC. 21, T.2 N., R.7 E., W.M. **CASCADE PIONEER CEMETERY (within B.B. BISHOP D.L.C. #39)** **in Second Addition to Plats of Relocated North Bonneville**



Trantow Surveying makes no warranty as to matters of unwritten title such as adverse possession, estoppel, acquiescence, etc.; environmental concerns such as wetlands pollution, etc.; the accuracy or position of features shown without dimension.

TRANTOW SURVEYING, INC.
 412 W. Jefferson-POB 287
 Bingen, WA 98605-0287
 Ph 509/493-3111 Fx 509/493-4309
 Member of Land Surveyor's Assoc. of Washington

SURVEY FOR
SKAMANIA COUNTY
CEMETERY DISTRICT

SKAMANIA CO., WASHINGTON

Project #: 1716 KW



12/28/99

SURVEYOR'S CERTIFICATE

This map correctly represents a survey made by me or under my direction in conformance with the requirements of the Survey Recording Act at the request of Skamania County Cemetery District in July, 1999.

Terry N. Trantow
 Terry N. Trantow, PLS 15673

AUDITOR'S CERTIFICATE

Filed for record this 14th day of January, 2000 at 9:27 in Book 3 of SURVEYS at Page 327 at the request of Trantow Surveying.

Charles Moser
 County Auditor Deputy