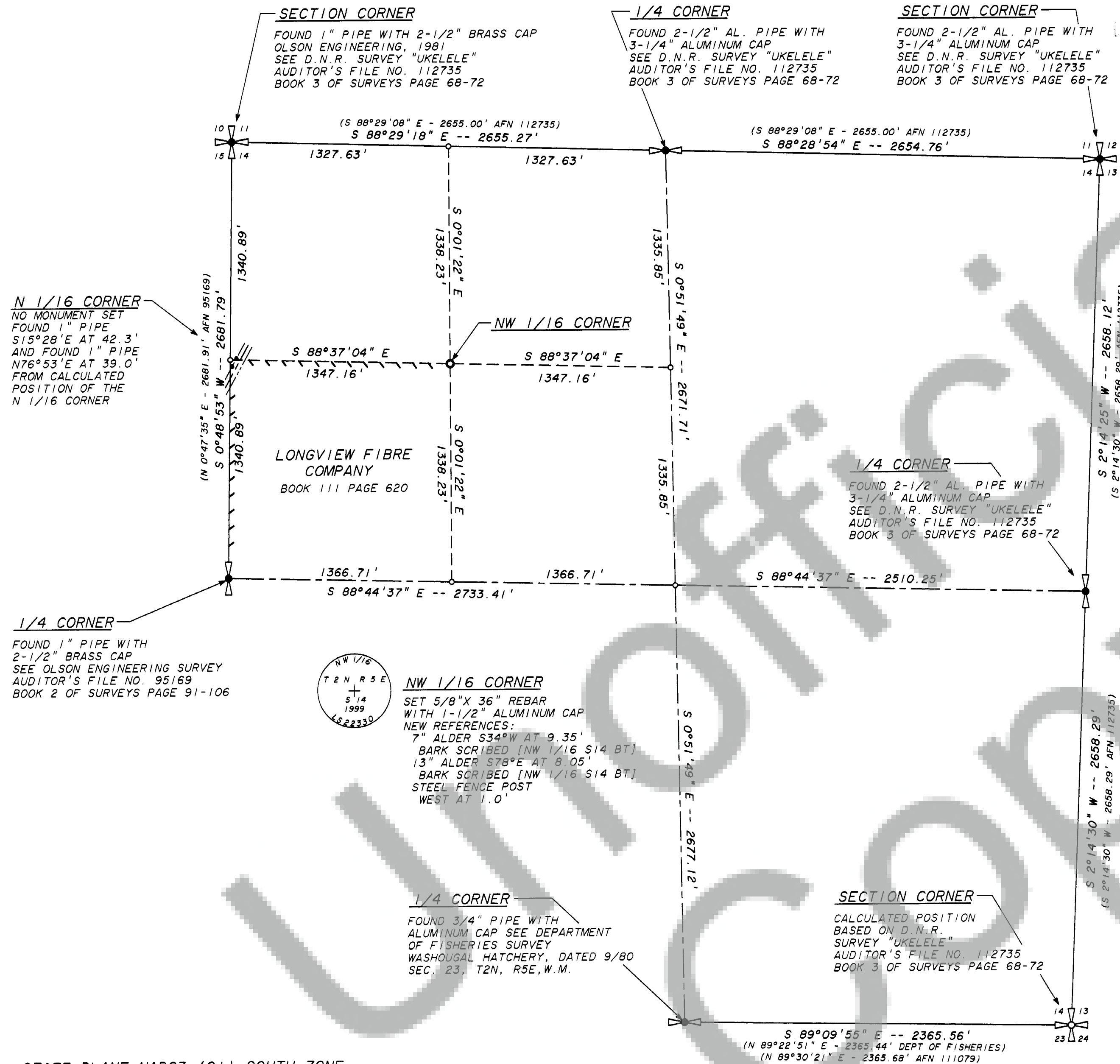


RECORD OF SURVEY  
FOR  
LONGVIEW FIBRE COMPANY  
IN THE SW 1/4 OF THE NW 1/4 OF  
SECTION 14, T 2 N, R 5 E, W.M.  
SKAMANIA COUNTY, WASHINGTON

THE PURPOSE OF THIS SURVEY WAS TO ESTABLISH THE NORTH AND WEST LINES OF THE SW 1/4 OF THE NW 1/4 OF SECTION 14. THE CONTROL FOR THIS SURVEY WAS ESTABLISHED WITH LEICA 399 GPS RECEIVERS. THE WASHINGTON STATE PLANE COORDINATES, SOUTH ZONE NAD83 (91), ARE BASED ON GPS TIES TO CLARK COUNTY GPS CONTROL STATIONS 62 AND 70. LONGVIEW FIBRE CONTROL POINT NO. 600 WAS ALSO USED. CONTROL POINTS WERE ESTABLISHED NEAR THE NE SECTION CORNER, N 1/4 CORNER, S 1/4 CORNER, NW 1/16 CORNER AND N 1/16 CORNER AND W 1/4 CORNER. THE E 1/4 CORNER WAS OCCUPIED WITH A GPS RECEIVER. THE NE SECTION CORNER, N 1/4 CORNER AND S 1/4 CORNER WERE TIED RADIALY FROM THE CONTROL. TRAVERSING WAS DONE WITH A WILD T-1610 AND A DI-5. A TRAVERSE WAS RUN FROM GPS CONTROL NEAR THE N 1/16 CORNER TO THE NW SECTION CORNER. A TRAVERSE WAS RUN FROM GPS CONTROL NEAR THE N 1/16 CORNER SOUTH TO THE W 1/4 CORNER AND CLOSED ON GPS CONTROL. A TRAVERSE WAS RUN FROM GPS CONTROL NEAR THE N 1/16 EAST TO THE NW 1/16 AND CLOSED ON GPS CONTROL. LONGVIEW FIBRE COMPANY HAS TITLE TO THE SW 1/4 OF THE NW 1/4 OF SECTION 14. PLATS "HIDEAWAY ON WASHOUGAL", DATED NOVEMBER 1971 AND "WHISPERING HILLS RIVER ESTATES", DATED 1966 APPEAR TO ENCROACH ON THE SW 1/4 OF THE NW 1/4 OF SECTION 14. IN THE AREA SOUTH AND EAST OF THE N 1/16 CORNER BETWEEN SECTIONS 14 AND 15, NORTHWEST OF WASHOUGAL RIVER ROAD. THIS SURVEY DID NOT ESTABLISH THE N 1/16 CORNER.



BASIS OF BEARING  
BEARINGS ARE STATE PLANE  
WASHINGTON SOUTH ZONE NAD83 (91)

0' 500' 1000' 1500'  
SCALE: 1 INCH = 500 FEET  
GRID DISTANCES ARE SHOWN

AUDITOR'S CERTIFICATE

FILED FOR RECORD THIS 9<sup>th</sup> DAY OF December, 1999  
AT 2:45 PM IN BOOK 3 OF SURVEYS AT PAGE 325  
AT THE REQUEST OF LONGVIEW FIBRE COMPANY.

136995  
AUDITOR'S FILE NUMBER

George J. Ford  
SKAMANIA COUNTY AUDITOR

STATE PLANE NAD83 (91) SOUTH ZONE

| POINT       | NORTHING  | EASTING    | CONVERGENCE | SCALE FACTOR |
|-------------|-----------|------------|-------------|--------------|
| NE SEC COR  | 125509.05 | 1219426.43 | -1°11'46"   | 1.0000423    |
| N 1/4 COR   | 125579.39 | 1216772.60 | -1°12'13"   | 1.0000423    |
| NW SEC COR  | 125649.44 | 1214118.25 | -1°12'40"   | 1.0000423    |
| E 1/4 COR   | 122852.95 | 1219322.52 | -1°11'47"   | 1.0000443    |
| S 1/4 COR   | 120231.16 | 1216853.23 | -1°12'11"   | 1.0000464    |
| W 1/4 COR   | 122967.92 | 1214080.12 | -1°12'40"   | 1.0000443    |
| NW 1/16 COR | 124276.18 | 1215445.96 | -1°12'26"   | 1.0000433    |

NOTE: NEW REFERENCES  
REFERENCES HAVE AN 8" SPIKE AT BASE OF SCRIBE WITH LONGVIEW  
FIBRE COMPANY LOCATION TAG ABOVE SCRIBE. ALL ORIENTED TOWARD  
MONUMENT. DISTANCES MEASURED TO SPIKE. BEARINGS TO REFERENCES  
TAKEN WITH HAND COMPASS HAVING A DECLINATION OF 21° EAST.

LEGEND

- SECTION CORNER, 1/4 CORNER FOUND AS NOTED
- MONUMENT FOUND AS NOTED
- CALCULATED POSITION
- SET 5/8" X 36" REBAR WITH 1-1/2" ALUMINUM CAP STAMPED AS SHOWN
- RECORD BEARING AND/OR DISTANCE AS NOTED
- LINE MARKED WITH 1/2" X 60" FIBER GLASS RODS. WITH RED AND WHITE FLAGGING BETWEEN RODS. TREES ALONG LINE PAINTED WITH BLUE PAINT.

SURVEYOR'S CERTIFICATE

THIS SURVEY CORRECTLY REPRESENTS A SURVEY MADE BY ME OR UNDER MY DIRECTION IN CONFORMANCE WITH THE REQUIREMENTS OF THE SURVEY RECORDING ACT AT THE REQUEST OF LONGVIEW FIBRE COMPANY IN AUGUST 1999.

GEORGE J. FORD, PLS  
CERTIFICATE NO. 22330

LONGVIEW FIBRE COMPANY  
LONGVIEW, WA 98632

