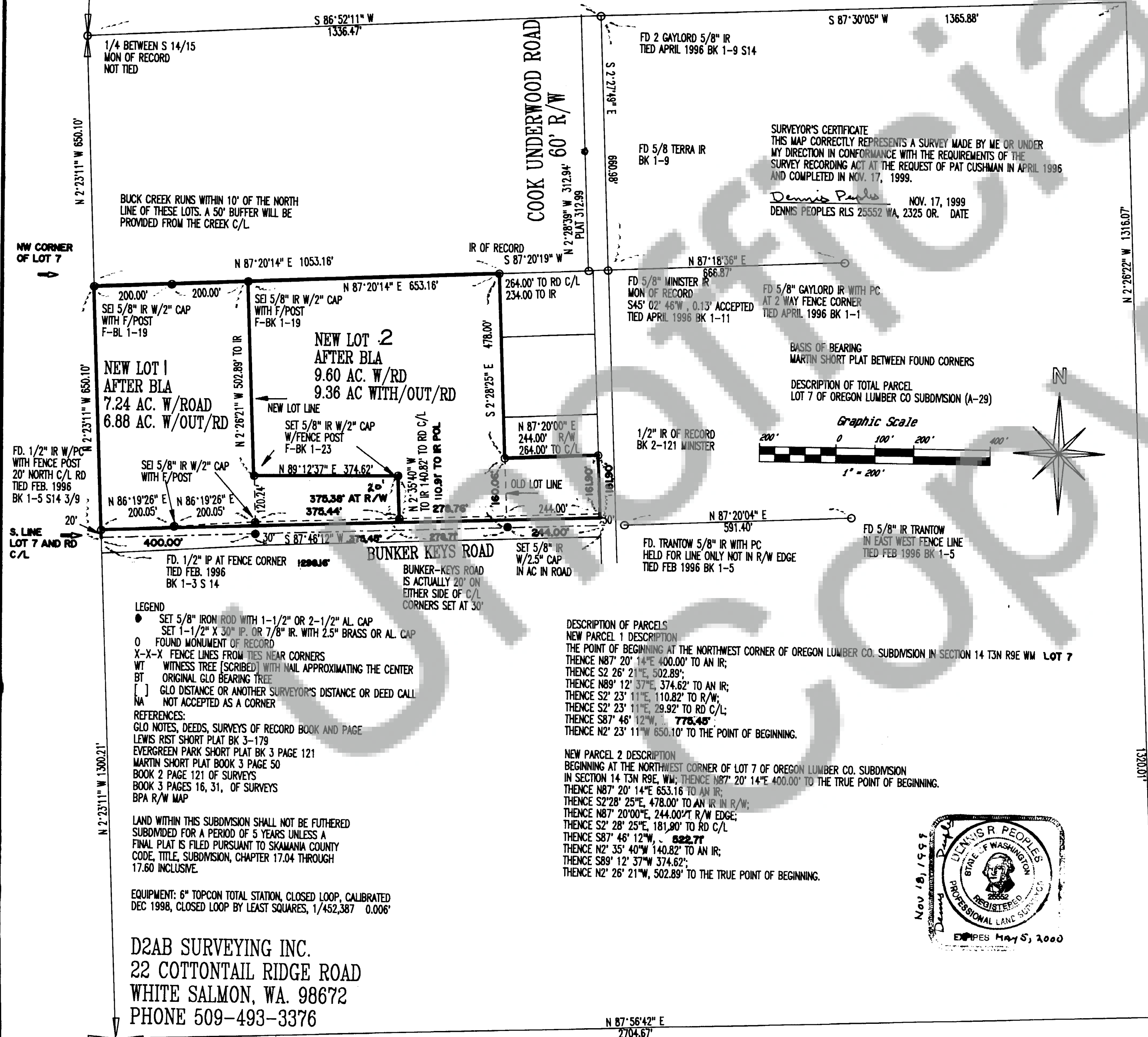


SURVEY OF LOT 7 OF OREGON LUMBER COMPANY SUBDIVISION (A-29) LOCATED IN W 1/2 OF SW 1/4, SECTION 14, T3N R9E W.M. IN SKAMANIA COUNTY



W 1/2 OF SW 1/4,
S14, T3N R9E W.M.
FOR PAT CUSHMAN