

# SURVEY

IN THE SE 1/4 SW 1/4 OF  
SECTION 8, T1N, R5E, W.M.  
SKAMANIA COUNTY, WA.

## NARRATIVE

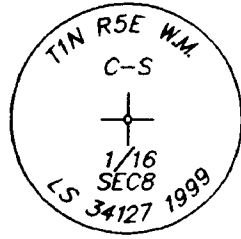
THE PURPOSE OF THIS SURVEY IS TO CALCULATE AND MONUMENT A BOUNDARY LINE ADJUSTMENT OF THE BELOW CITED "BAHNEAN" AND "HOGAN" TRACTS. BEARINGS WERE BASED ON REMAINING RANDOM CONTROL TRAVERSE POINTS USED IN SHORT PLAT 3-342 (SURVEYED BY OUR FIRM IN 1998). THIS TRAVERSE MET THE STANDARDS CONTAINED IN WAC 332-130-090. NEW CORNER MONUMENTS WERE RADIALLY SET FROM THE ABOVE MENTIONED TRAVERSE POINTS. A 2-SECOND "TOTAL STATION INSTRUMENT" WITH ELECTRONIC DATA COLLECTOR WAS USED FOR ALL 1999 SURVEY WORK.

## DEED REFERENCE

FJELDHEIM TO BAHNEAN  
DEED BOOK 107, PAGE 814 (12/7/97)

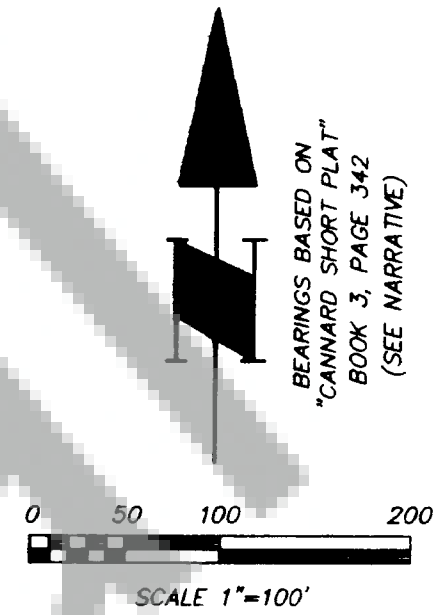
WILSON TO HOGAN  
DEED BOOK 114, PAGE 681 (6/30/89)

POSITION OF 5/8" I.R.  
AS SHOWN IN SP 3-342  
(HELD) (SEE LCR 141-230  
AND LCR 161-708)



SET 1" I.P. WITH BRASS  
CAP AT CENTER-SOUTH  
1/16 CORNER. FOUND  
5/8" I.R. WITH YPC STAMPED  
"BELL 11873" (AS SHOWN IN  
R.O.S. 3-223) N 86°43'31"E,  
0.62' FROM SET I.P.

\* R.P.s: WEST, 13.65', 24" MAPLE  
S 9°E, 6.77', 20" MAPLE  
N 9°W, 20.4' STEEL FENCE POST



## LEGEND

- MONUMENT AS NOTED (TIED 10/26/99  
IF SHOWN AS FOUND)
- SET 1/2" x 24" IRON REBAR WITH YELLOW  
PLASTIC CAP STAMPED "BESEDA 34127"  
UNLESS NOTED OTHERWISE

R.O.S. = RECORD OF SURVEY

LCR = LAND CORNER RECORD

( ) RECORD DATA PER SKAMANIA COUNTY  
ROAD PLANS OF PERMANENT HIGHWAY No.17

AF# = AUDITOR'S FILE NUMBER

I.P. = IRON PIPE

I.R. = IRON ROD

⊕ = CENTERLINE

YPC = YELLOW PLASTIC CAP

\* R.P. = REFERENCE POINTS ARE 5/8" IRON RODS WITH  
YELLOW PLASTIC CAP STAMPED "HAGEDORN, INC." SET  
APPROXIMATELY ONE FOOT IN FRONT OF THE TREE NOTED  
(TREE USED ONLY TO NAIL REFERENCE TAG TO).

NOTE  
CENTERLINE OF BELLE CENTER ROAD CALCULATED FROM  
SKAMANIA COUNTY ROAD PLANS OF PERMANENT HIGHWAY  
No. 17 DATED 4/2/1929. TO ESTABLISH THE CENTERLINE  
OF BELLE CENTER ROAD, I TIED THE EXISTING CENTERLINE  
FROM STA 42+72.0 (S 1/4 CORNER SECTION 8) TO STA  
67+38.1. I ROTATED THE COORDINATE MODEL OF THE 1929  
CENTERLINE ABOUT THE S 1/4 CORNER OF SECTION 8 TO  
MATCH THE EXISTING TANGENT BETWEEN STA 63+19.5 AND  
STA 67+38.1. THE APPARENT CENTERLINE IN THE VICINITY  
OF STA 55+33.3 FITS THE CALCULATED CENTERLINE WITHIN  
1 FOOT.

## SURVEYOR'S CERTIFICATE

This map correctly represents a survey made by me or under  
my direction in conformance with the requirements of the Survey  
Recording Act at the request of PETE HOGAN  
in OCTOBER, 19 99



## AUDITOR'S CERTIFICATE

Filed for record this 23<sup>rd</sup> day of November, 1999 at 10:56 a.m.  
in Book 3 of surveys at Page 323 at the request of  
Hagedorn, Inc.  
(Signed) Patty Lowry  
(Deputy County Auditor)

NOTE: Hagedorn, Inc. makes no warranties as to matters of unwritten  
title such as acquiescence, estoppel, adverse possession, etc.

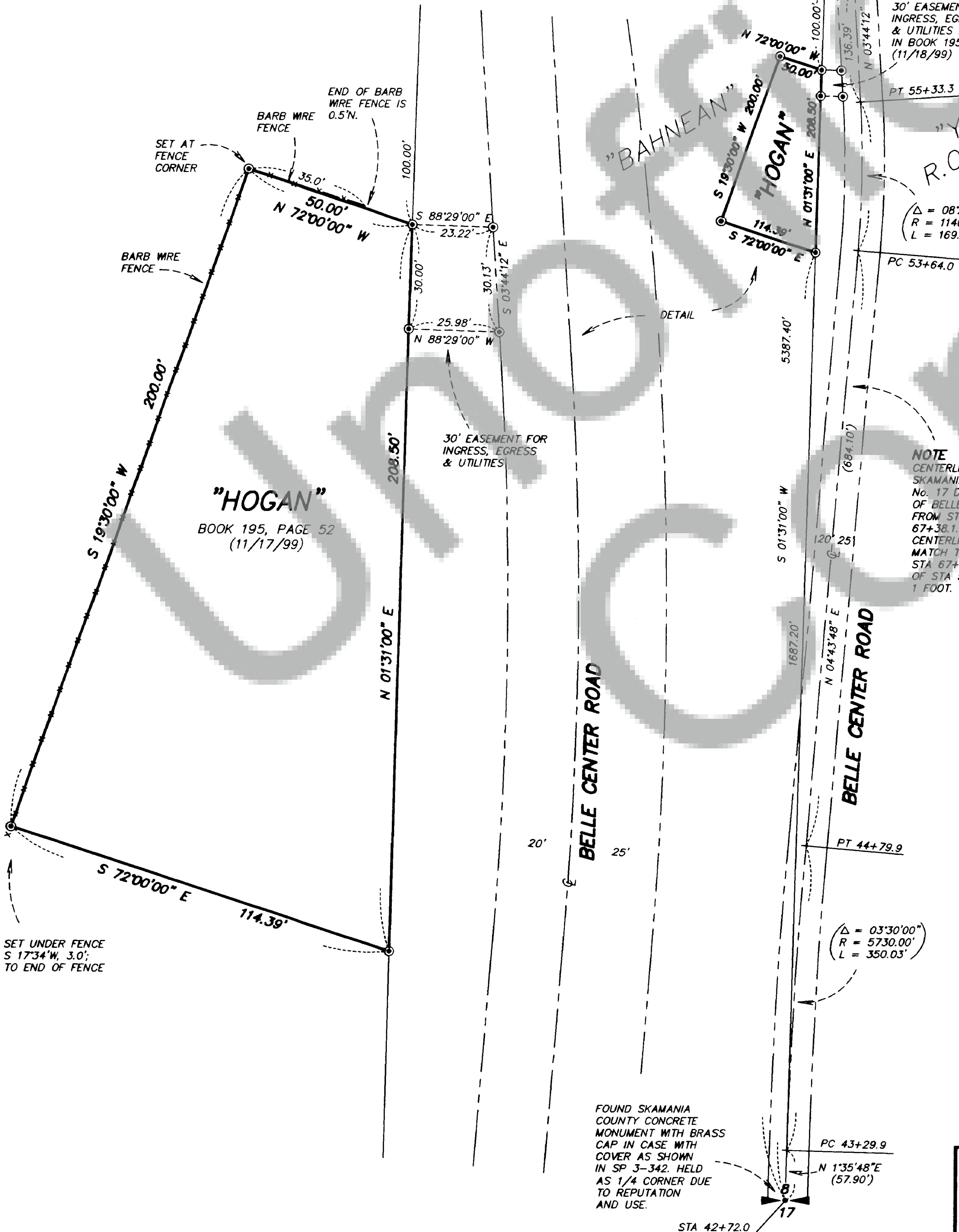
**HAGEDORN, INC.**

1924 Broadway Vancouver, Wa. 98663  
Ph: (360) 696-4428 (503) 283-6778

SCALE: 1"=100'  
DATE: 11/23/99  
JOB NO.: 99-322

CALC. BY: CAB  
DRAWN BY: CC  
CHECKED BY: CEW

SHEET 1 OF 1



136890

BOOK 3 PAGE 323