

134736

BOOK 187 PAGE 935

FILED IN RECORD  
STATE OF WASH  
BY Bell DesignAPR 1 1 39 PM '99  
GARY E. OLSON  
REGISTERED LAND SURVEYOR

## LAND CORNER RECORD

**GRANTOR/SURVEYOR/PUBLIC OFFICER:** This corner record correctly represents work performed by me or under my direction in conformance with the Survey Recording Act.

COMPANY OR AGENCY: Bell Design Company

ADDRESS: 1000 East Steuben  
PO Box 308  
Bingen, WA 98605

GRANTEE: PUBLIC

SEAL/SIGNATURE/DATE

**LEGAL:** TWP: 2 N RGE: 7 E CORNER CODE: AB 19-20

Southeast corner of culdesac on Lakeview Road, in NW 1/4 NE 1/4 of Section 2

COUNTY: Skamania

**WASHINGTON PLANE COORDINATES:** N: E:  
**ORDER:** ZONE: DATUM (Date of adjustment):

**CORNER INFORMATION:** Discuss the history, evidence found, and perpetuation of the corner. Diagram the references; provide the date of work; and, if applicable, a reference to a map of record and/or the field book/page no. Use the back, if needed.

## History:

November 12, 1985 Oregon Land Surveyor, Verle C. Moore No. 501, set 5/8" rod for corner on north side of Lot 3 of the Anthony Pappas Short Plat recorded in Book T Page 24. The survey is recorded in Book 2 of Surveys at page 217, dated 11-18-85.

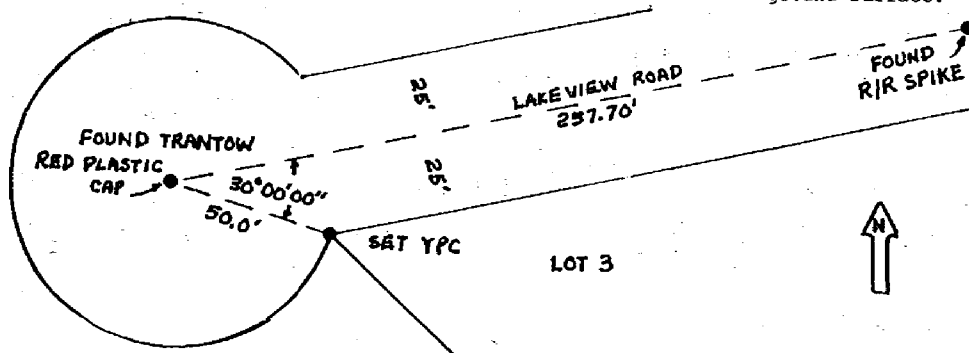
September, 1993 Terry Trantow filed Hartman Short Plat which depicts found monument of record. Recorded in Book T Page 45 of Town Plats, APN 117286.

## Evidence Found:

No monument found. Lot 3 land owner stated that road construction destroyed corner monument.

## Perpetuation of Corner:

Set 30" long #5 rebar with yellow plastic cap (YPC) marked "Bell Design Co #11873" in southeast edge of culdesac, set flush with ground surface.



**MARK THE CORNER LOCATION BELOW AND FILL IN THE CORNER CODE BLANK ON THE OTHER SIDE.**  
For corners at the intersection of two lines, the corner code is the alphanumeric coordinate that corresponds to the appropriate intersection of lines.

For corners that are only on one line, the corner code is the line designation and the related line segment; i.e., a corner on line 5 between 'B' and 'C' is designated BC-5.

For corners that are between lines, the corner code is both line segments; i.e., a corner in the SE1/4 of the SE1/4 of section 18 is designated MN 4-5.

	1	2	3	4	5	6	7	8	9	10	11	12	13	14	15	16	17	18	19	20	21	22	23	24	25
A																									
B																									
C																									
D																									
E																									
F																									
G																									
H																									
I																									
J																									
K																									
L																									
M																									
N																									
O																									
P																									
Q																									
R																									
S																									
T																									
U																									
V																									
W																									
X																									
Y																									
Z																									

RCW 58.09.060 (2) requires the following information on this form: an accurate description and location, in reference to the corner position, of all monuments and accessories (a) found at the corner and (b) placed or replaced at the corner; (c) basis of bearings used to describe or locate such monuments or accessories; and (d) corollary information that may be helpful to relocate or identify the corner position.

SPACE FOR ADDITIONAL COMMENT: