

SHORT PLAT

IN THE E 1/2
SECTION 8, T1N, R5E, W.M.
SKAMANIA, COUNTY, WA.

WE, OWNERS OF THE ABOVE TRACT OF LAND, HEREBY DECLARE AND CERTIFY THIS SHORT PLAT TO BE TRUE AND CORRECT TO THE BEST OF OUR ABILITIES, AND THAT THIS SHORT SUBDIVISION HAS BEEN MADE WITH OUR FREE CONSENT AND IN ACCORDANCE WITH OUR DESIRES. FURTHER, WE DEDICATE ALL ROAD AS SHOWN, NOT NOTED AS PRIVATE, AND WAIVE ALL CLAIMS FOR DAMAGES AGAINST ANY GOVERNMENTAL AGENCY ARISING FROM THE CONSTRUCTION AND MAINTENANCE OF SAID ROADS.

Donald A. Cannard AS TRUSTEE
Carol J. Cannard AS TRUSTEE



Janice A. Scott
NOTARY PUBLIC

10/21/98
DATE

THE LOTS IN THIS SHORT PLAT CONTAIN ADEQUATE AREA AND PROPER SOIL, TOPOGRAPHIC AND DRAINAGE CONDITIONS TO BE SERVED BY AN ON-SITE SEWAGE DISPOSAL SYSTEM UNLESS OTHERWISE NOTED ON THE SHORT PLAT MAP. ADEQUACY OF WATER SUPPLY IS NOT GUARANTEED UNLESS SO NOTED ON THE SHORT PLAT MAP.

Martin J. Smith 11-22-98
S. W. WASHINGTON HEALTH DISTRICT
DATE

I, *William W. C. J.*, COUNTY ENGINEER OF SKAMANIA COUNTY, WASH., CERTIFY THAT THIS PLAT MEETS CURRENT SKAMANIA COUNTY SURVEY REQUIREMENTS; CERTIFY THAT ANY ROADS AND/OR BRIDGES, DEVELOPED IN CONJUNCTION WITH THE APPROVED PLAN, MEET CURRENT SKAMANIA COUNTY DEVELOPMENT STANDARDS FOR ROADS; CERTIFY THAT THE CONSTRUCTION OF ANY STRUCTURES, REQUIRED FOR AND PRIOR TO FINAL APPROVAL, MEETS STANDARD ENGINEERING SPECIFICATIONS; APPROVE THE LAYOUT OF ROADS AND EASEMENTS; AND, APPROVE THE ROAD NAME(S) AND NUMBER(S) OF SUCH ROAD(S).

William W. C. J. 11/17/98
COUNTY ENGINEER
DATE

ALL TAXES AND ASSESSMENTS ON PROPERTY INVOLVED WITH THIS SHORT PLAT HAVE BEEN PAID, DISCHARGED OR SATISFIED. *Tha 1999*
Vickie Lynn Jensen 12-29-98
COUNTY TREASURER
DATE

THE LAYOUT OF THIS SHORT SUBDIVISION COMPLIES WITH ORDINANCE 1980-07 REQUIREMENTS, AND THE SHORT PLAT IS APPROVED SUBJECT TO RECORDING IN THE SKAMANIA COUNTY AUDITOR'S OFFICE.

Mark J. Mazurki 11-24-98
COUNTY PLANNING DEPARTMENT
DATE

SURVEYOR'S CERTIFICATE

THIS MAP CORRECTLY REPRESENTS A SURVEY MADE BY ME OR UNDER MY DIRECTION IN CONFORMANCE WITH THE REQUIREMENTS OF THE SURVEY RECORDING ACT AT THE REQUEST OF

David & Carol J. Cannard IN *MAY* 1998

STATE OF WASHINGTON
COUNTY OF SKAMANIA

I HEREBY CERTIFY THAT THE WITHIN INSTRUMENT OF WRITING FILED BY *Mark Mazurki* OF *Planning* AT *3:03 P.M.*

WAS RECORDED IN BOOK *3* OF *Short Plats* AT PAGE *342-3*

Gregory Laury
RECORDED BY SKAMANIA COUNTY, WASHINGTON

Shay M. Olson by *P. Laury*
COUNTY AUDITOR



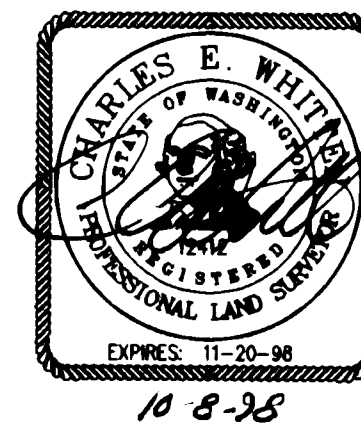
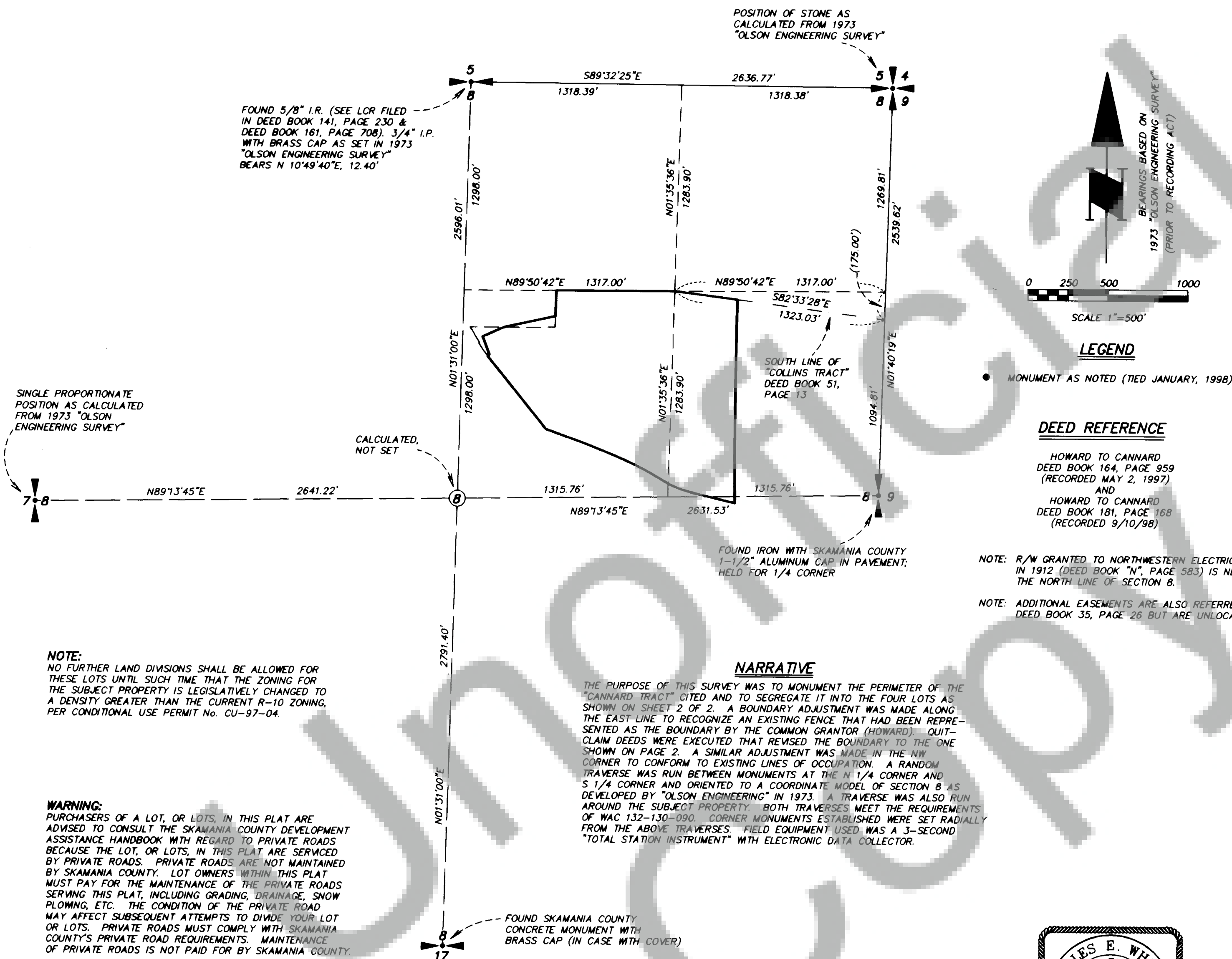
HAGEDORN, INC.

1924 Broadway Vancouver, Wa. 98663
Ph: (360) 696-4428 (503) 283-6778

SCALE: 1"=500'
DATE: 10/7/98
JOB NO.: 97-022

CALC. BY: CEW
DRAWN BY: CC
CHECKED BY: DLS

DWG# 97-022
SHEET 1 OF 2



NOTE: PRIVATE ROAD AGREEMENT RECORDED IN BOOK 185, PAGE 149 OF SKAMANIA COUNTY AUDITOR'S RECORDS.

LAND WITHIN THIS SUBDIVISION SHALL NOT BE FURTHER SUBDIVIDED FOR A PERIOD OF 5 YEARS UNLESS A FINAL PLAT IS FILED PURSUANT TO SKAMANIA COUNTY CODE, TITLE 17, SUBDIVISIONS, CHAPTER 17.04 THROUGH 17.60 INCLUSIVE.

PURCHASERS OF A LOT, OR LOTS, IN THIS PLAT ARE ADVISED TO CONSULT THE SKAMANIA COUNTY DEVELOPMENT ASSISTANCE HANDBOOK WITH REGARD TO PRIVATE ROADS BECAUSE THE LOT, OR LOTS, IN THIS PLAT ARE SERVED BY PRIVATE ROADS. PRIVATE ROADS ARE NOT MAINTAINED BY SKAMANIA COUNTY. LOT OWNERS WITHIN THIS PLAT MUST PAY FOR THE MAINTENANCE OF THE PRIVATE ROADS SERVING THIS PLAT, INCLUDING GRADING, DRAINAGE, SNOW PLOWING, ETC. THE CONDITION OF THE PRIVATE ROAD MAY AFFECT SUBSEQUENT ATTEMPTS TO DIVIDE YOUR LOT OR LOTS. PRIVATE ROADS MUST COMPLY WITH SKAMANIA COUNTY'S PRIVATE ROAD REQUIREMENTS. MAINTENANCE OF PRIVATE ROADS NOT PAID FOR BY SKAMANIA COUNTY.

PAGE 342-3

SHORT PLATS

3

BOOK

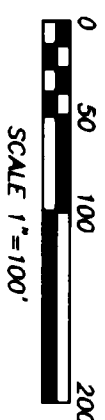
133835

BOOK 3 PAGE 343

"CANNARD" SHORT PLAT

IN THE S 1/2 NE 1/4 &
THE NE 1/4 SE 1/4 OF
SECTION 8, T1N, R5E, W1M,
SKAMANIA COUNTY, WA.

- MONUMENT AS NOTED (TIED JANUARY, 1998)
- SET 5/8" x 30" IRON REBAR WITH ORANGE PLASTIC CAP STAMPED "WHITTEN 12412" WITH STEEL FENCEPOST SET ALONGSIDE
- R.O.S. = RECORD OF SURVEY
- () RECORD DATA
- ⊙ PERC HOLES
- (P) PRIVATE ROAD
- SLOPE ARROW
- AF# = AUDITOR'S FILE NUMBER
- NTS = NOT TO SCALE
- SEE PAGE 1 OF 2 FOR ADDITIONAL NOTES



LEGEND



HOWARD TO
SKAMANIA COUNTY
DEED BK. 80, PG. 350
(STATIONING & ALIGNMENT
FROM PLAN & PROFILE FOR
"BELLE CENTER ROAD"
M.P. 1.45 TO M.P. 1.93
SHEET 2 OF 3 (UNDATED)

FOUND SKAMANIA
COUNTY MONUMENT
76+80

BELLE CENTER ROAD

MT PLEASANT ROAD

LOT 4
3.13 ACRES

LOT 3
6.82 ACRES

LOT 2
13.60 ACRES

LOT 1
9.61 ACRES

Δ = 9.32.00"
R = 1920.00"
L = 319.47'

Δ = 0.52.03"
R = 1930.00"
L = 29.22'

Δ = 0.33.52"
R = 620.00"
L = 6.11'

Δ = 17.01.08"
R = 620.00"
L = 184.16'

Δ = 17.35.00"
R = 630.00"
L = 193.34'

Δ = 17.35.00"
R = 630.00"
L = 193.34'

Δ = 9.32.00"
R = 1920.00"
L = 319.47'

Δ = 0.52.03"
R = 1930.00"
L = 29.22'

Δ = 0.33.52"
R = 620.00"
L = 6.11'

Δ = 17.01.08"
R = 620.00"
L = 184.16'

Δ = 17.35.00"
R = 630.00"
L = 193.34'

Δ = 17.35.00"
R = 630.00"
L = 193.34'

Δ = 17.35.00"
R = 630.00"
L = 193.34'

Δ = 17.35.00"
R = 630.00"
L = 193.34'

Δ = 17.35.00"
R = 630.00"
L = 193.34'

Δ = 17.35.00"
R = 630.00"
L = 193.34'

Δ = 17.35.00"
R = 630.00"
L = 193.34'

Δ = 17.35.00"
R = 630.00"
L = 193.34'

Δ = 17.35.00"
R = 630.00"
L = 193.34'

Δ = 17.35.00"
R = 630.00"
L = 193.34'

Δ = 17.35.00"
R = 630.00"
L = 193.34'

Δ = 17.35.00"
R = 630.00"
L = 193.34'

Δ = 17.35.00"
R = 630.00"
L = 193.34'

Δ = 17.35.00"
R = 630.00"
L = 193.34'

Δ = 17.35.00"
R = 630.00"
L = 193.34'

Δ = 17.35.00"
R = 630.00"
L = 193.34'

Δ = 17.35.00"
R = 630.00"
L = 193.34'

Δ = 17.35.00"
R = 630.00"
L = 193.34'

Δ = 17.35.00"
R = 630.00"
L = 193.34'

Δ = 17.35.00"
R = 630.00"
L = 193.34'

Δ = 17.35.00"
R = 630.00"
L = 193.34'

Δ = 17.35.00"
R = 630.00"
L = 193.34'

Δ = 17.35.00"
R = 630.00"
L = 193.34'

Δ = 17.35.00"
R = 630.00"
L = 193.34'

Δ = 17.35.00"
R = 630.00"
L = 193.34'

Δ = 17.35.00"
R = 630.00"
L = 193.34'

Δ = 17.35.00"
R = 630.00"
L = 193.34'

Δ = 17.35.00"
R = 630.00"
L = 193.34'

Δ = 17.35.00"
R = 630.00"
L = 193.34'

Δ = 17.35.00"
R = 630.00"
L = 193.34'

Δ = 17.35.00"
R = 630.00"
L = 193.34'

Δ = 17.35.00"
R = 630.00"
L = 193.34'

Δ = 17.35.00"
R = 630.00"
L = 193.34'

Δ = 17.35.00"
R = 630.00"
L = 193.34'

Δ = 17.35.00"
R = 630.00"
L = 193.34'

Δ = 17.35.00"
R = 630.00"
L = 193.34'

Δ = 17.35.00"
R = 630.00"
L = 193.34'

Δ = 17.35.00"
R = 630.00"
L = 193.34'

Δ = 17.35.00"
R = 630.00"
L = 193.34'

Δ = 17.35.00"
R = 630.00"
L = 193.34'

Δ = 17.35.00"
R = 630.00"
L = 193.34'

Δ = 17.35.00"
R = 630.00"
L = 193.34'

Δ = 17.35.00"
R = 630.00"
L = 193.34'

Δ = 17.35.00"
R = 630.00"
L = 193.34'

Δ = 17.35.00"
R = 630.00"
L = 193.34'

Δ = 17.35.00"
R = 630.00"
L = 193.34'

Δ = 17.35.00"
R = 630.00"
L = 193.34'

Δ = 17.35.00"
R = 630.00"
L = 193.34'

Δ = 17.35.00"
R = 630.00"
L = 193.34'

Δ = 17.35.00"
R = 630.00"
L = 193.34'

Δ = 17.35.00"
R = 630.00"
L = 193.34'

Δ = 17.35.00"
R = 630.00"
L = 193.34'

Δ = 17.35.00"
R = 630.00"
L = 193.34'

Δ = 17.35.00"
R = 630.00"
L = 193.34'

Δ = 17.35.00"
R = 630.00"
L = 193.34'

Δ = 17.35.00"
R = 630.00"
L = 193.34'

Δ = 17.35.00"
R = 630.00"
L = 193.34'

Δ = 17.35.00"
R = 630.00"
L = 193.34'

Δ = 17.35.00"
R = 630.00"
L = 193.34'

Δ = 17.35.00"
R = 630.00"
L = 193.34'

Δ = 17.35.00"
R = 630.00"
L = 193.34'

Δ = 17.35.00"
R = 630.00"
L = 193.34'

Δ = 17.35.00"
R = 630.00"
L = 193.34'

Δ = 17.35.00"
R = 630.00"
L = 193.34'

Δ = 17.35.00"
R = 630.00"
L = 193.34'

Δ = 17.35.00"
R = 630.00"
L = 193.34'

Δ = 17.35.00"
R = 630.00"
L = 193.34'

Δ = 17.35.00"
R = 630.00"
L = 193.34'

Δ = 17.35.00"
R = 630.00"
L = 193.34'

Δ = 17.35.00"
R = 630.00"
L = 193.34'

Δ = 17.35.00"
R = 630.00"
L = 193.34'

Δ = 17.35.00"
R = 630.00"
L = 193.34'

Δ = 17.35.00"
R = 630.00"
L = 193.34'

Δ = 17.35.00"
R = 630.00"
L = 193.34'

Δ = 17.35.00"
R = 630.00"
L = 193.34'

Δ = 17.35.00"
R = 630.00"
L = 193.34'

Δ = 17.35.00"
R = 630.00"
L = 193.34'

Δ = 17.35.00"
R = 630.00"
L = 193.34'

Δ = 17.35.00"
R = 630.00"
L = 193.34'

Δ = 17.35.00"
R = 630.00"
L = 193.34'

Δ = 17.35.00"
R = 630.00"
L = 193.34'

Δ = 17.35.00"
R = 630.00"
L = 193.34'

Δ = 17.35.00"
R = 630.00"
L = 193.34'

Δ = 17.35.00"
R = 630.00"
L = 193.34'

Δ = 17.35.00"
R = 630.00"
L = 193.34'

Δ = 17.35.00"
R = 630.00"
L = 193.34'

Δ = 17.35.00"
R = 630.00"
L = 193.34'

Δ = 17.35.00"
R = 630.00"
L = 193.34'

Δ = 17.35.00"
R = 630.00"
L = 193.34'

Δ = 17.35.00"
R = 630.00"
L = 193.34'

Δ = 17.35.00"
R = 630.00"
L = 193.34'

Δ = 17.35.00"
R = 630.00"
L = 193.34'

Δ = 17.35.00"
R = 630.00"
L = 193.34'

Δ = 17.35.00"
R = 630.00"
L = 193.34'

Δ = 17.35.00"
R = 630.00"
L = 193.34'

Δ = 17.35.00"
R = 630.00"
L = 193.34'

Δ = 17.35.00"
R = 630.00"
L = 193.34'

Δ = 17.35.00"
R = 630.00"
L = 193.34'

Δ = 17.35.00"
R = 630.00"
L = 193.34'

Δ = 17.35.00"
R = 630.00"
L = 193.34'

Δ = 17.35.00"
R = 630.00"
L = 193.34'

Δ = 17.35.00"
R = 630.00"
L = 193.34'

Δ = 17.35.00"
R = 630.00"
L = 193.34'

Δ = 17.35.00"
R = 630.00"
L = 193.34'

Δ = 17.35.00"
R = 630.00"
L = 193.34'

Δ = 17.35.00"
R = 630.00"
L = 193.34'

Δ = 17.35.00"
R = 630.00"
L = 193.34'

Δ = 17.35.00"
R = 630.00"
L = 193.34'

Δ = 17.35.00"
R = 630.00"
L = 193.34'

Δ = 17.35.00"
R = 630.00"
L = 193.34'

Δ = 17.35.00"
R = 630.00"
L = 193.34'

Δ = 17.35.00"
R = 630.00"
L = 193.34'

Δ = 17.35.00"
R = 630.00"
L = 193.34'

Δ = 17.35.00"
R = 630.00"
L = 193.34'

Δ = 17.35.00"
R = 630.00"
L = 193.34'

Δ = 17.35.00"
R = 630.00"
L = 193.34'

Δ = 17.35.00"
R = 630.00"
L = 193.34'

Δ = 17.35.00"
R = 630.00"
L = 193.34'

Δ = 17.35.00"
R = 630.00"
L = 193.34'

Δ = 17.35.00"
R = 630.00"
L = 193.34'

Δ = 17.35.00"
R = 630.00"
L = 193.34'

Δ = 17.35.00"
R = 630.00"
L = 193.34'

Δ = 17.35.00"
R = 630.00"
L = 193.34'

Δ = 17.35.00"
R = 630.00"
L = 193.34'

Δ = 17.35.00"
R = 630.00"
L = 193.34'

Δ = 17.35.00"
R = 630.00"
L = 193.34'

Δ = 17.35.00"
R = 630.00"
L = 193.34'

Δ = 17.35.00"
R = 630.00"
L = 193.34'

Δ = 17.35.00"
R = 630.00"
L = 193.34'

Δ = 17.35.00"
R = 630.00"
L = 193.34'

Δ = 17.35.00"
R = 630.00"
L = 193.34'

Δ = 17.35.00"
R = 630.00"
L = 193.34'

Δ = 17.35.00"
R = 630.00"
L = 193.34'

Δ = 17.35.00"
R = 630.00"
L = 193.34'

Δ = 17.35.00"
R = 630.00"
L = 193.34'

Δ = 17.35.00"
R = 630.00"
L = 193.34'

Δ = 17.35.00"
R = 630.00"
L = 193.34'

Δ = 17.35.00"
R = 630.00"
L = 193.34'

Δ = 17.35.00"
R = 630.00"
L = 193.34'

Δ = 17.35.00"
R = 630.00"
L = 19