

GENERAL LAND OFFICE HISTORY:

THE SOUTHERN 4 TIERS OF THIS TOWNSHIP WERE SURVEYED BY U.S. DEPUTY SURVEYOR JOHN TRUTCH IN 1857 UNDER CONTRACT NO. 24. THE NORTHERN 2 TIERS OF THIS TOWNSHIP WERE SURVEYED BY U.S. DEPUTY SURVEYOR SAMUEL LACKLAND IN 1891 UNDER CONTRACT NO. 568.

METHOD OF SURVEY:

THIS SURVEY WAS DONE BY FIELD TRAVERSE USING A WILD T-1800 1 SECOND THEODOLITE WITH A WILD DI-1600 ELECTRONIC DISTANCE METER (EDM) AND/OR A WILD T-1610 1 SECOND ELECTRONIC THEODOLITE WITH A WILD DI-1001 EDM, AND A WILD DI-3000 EDM. TRAVERSES WERE CLOSED LOOPS OR CLOSED BETWEEN KNOWN POINTS.

BASIS OF BEARINGS:

1981 RECORD OF SURVEY BY WILLIAM F. HAGEDORN, PLS 9579, RECORDED IN BOOK 12 OF SURVEYS AT PAGE 190, RECORDS OF CLARK COUNTY, WASHINGTON, WHICH SHOWS THE SUBDIVISION OF SECTION 13.

DESCRIPTION OF STATE OWNERSHIP:

THE NORTHEAST 1/4 OF SECTION 13, TOWNSHIP 2 NORTH, RANGE 4 EAST, WM., CLARK COUNTY, WASHINGTON

////////// INDICATES THAT 1/2" X 2 1/2" FIBERGLASS POSTS WERE SET AT RANDOM INTERVALS ALONG THE NOTED SECTION OR SUB-DIVISIONAL LINES AND ARE WITHIN +/- ONE FOOT OF THE ACTUAL SECTION OR SUB-DIVISIONAL LINES. A 1" X 5" PVC PIPE WAS PLACED DIRECTLY OVER EACH POST.

PURPOSE OF SURVEY:

THE PURPOSE OF THIS SURVEY IS TO POST THE EAST, SOUTH AND WEST SIDES OF THE STATE OWNED NORTHEAST 1/4 OF SECTION 13, THE WEST 1/2 OF THE NORTH SECTION LINE WHICH IS THE SOUTHERN BOUNDARY OF STATE LAND IN SECTION 12, AND THE NORTH 1/2 OF THE WEST LINE WHICH IS THE EASTERN BOUNDARY OF STATE LAND IN SECTION 14.

SURVEY REFERENCES:

THE FOLLOWING SURVEYS ARE REFERRED TO IN THE CORNER NOTES:

SURVEY REFERENCE NO. 1: 1981 RECORD OF SURVEY BY WILLIAM F. HAGEDORN, PLS 9579, RECORDED IN BOOK 12 OF SURVEYS AT PAGE 190, RECORDS OF CLARK COUNTY, WASHINGTON. SAID SURVEY CALCULATED, BUT DID NOT SET, THE NORTH 1/4 CORNER ON LINE BETWEEN THE SECTION CORNERS AND 8 LINKS EAST OF THE GLO CREEK CALL.

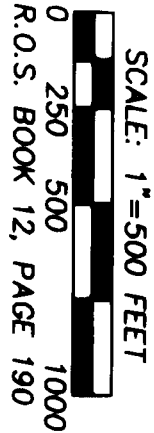
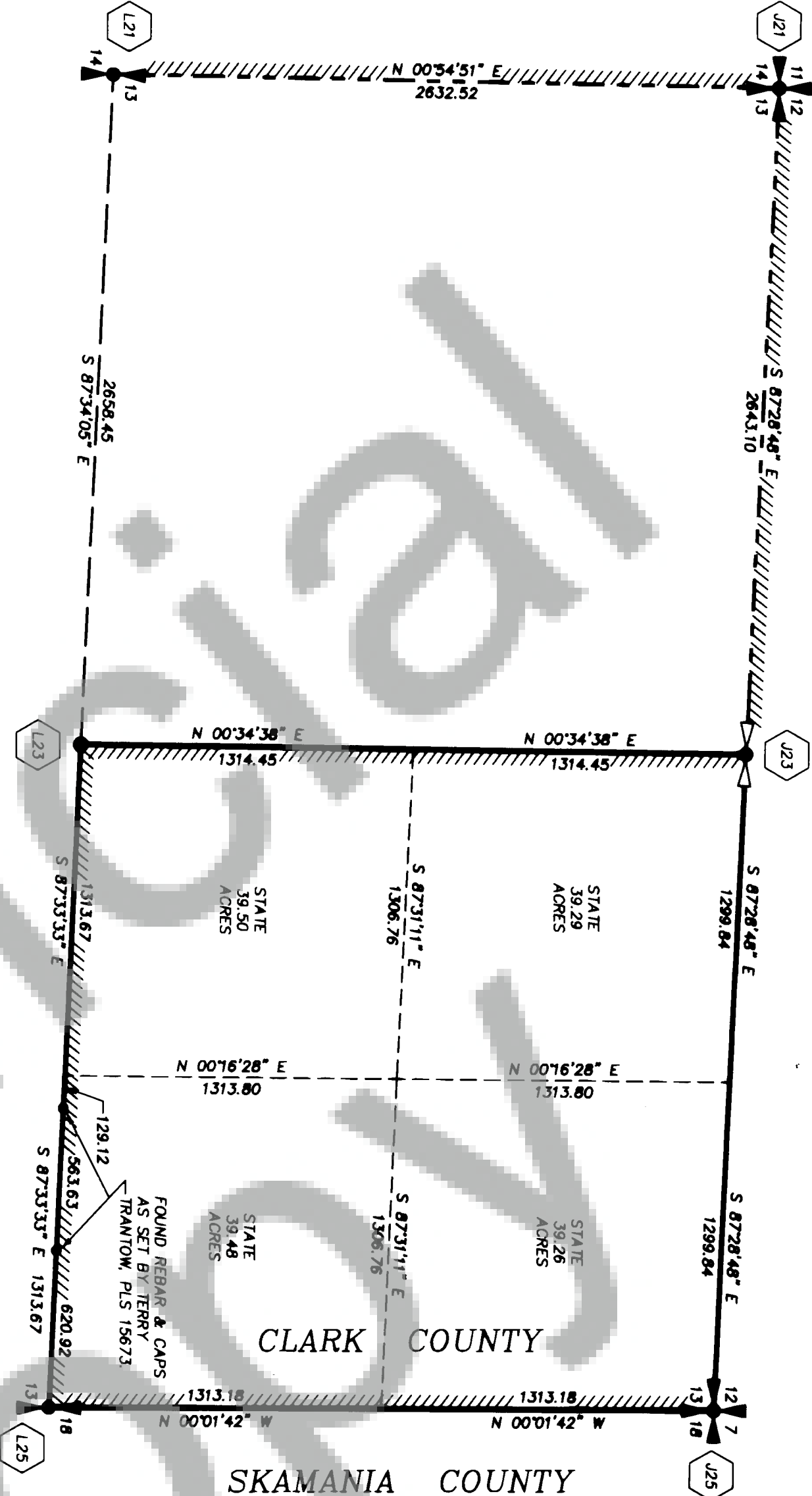
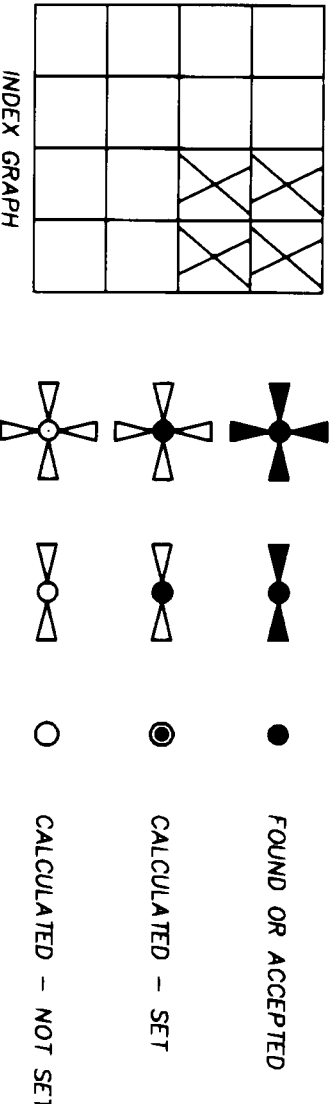
SURVEY REFERENCE NO. 2: A SURVEY IN PROGRESS BY TERRY TRANTOW, LS 15673, IN SECTION 13. SAID SURVEY UTILIZES THE SUBDIVISION FROM SURVEY REFERENCE NO. 1, AND SETS THE CENTER 1/4 CORNER AND 2 PROPOSED LOT CORNERS BETWEEN THE CENTER 1/4 CORNER AND THE EAST 1/4 CORNER.

LEGEND

STANDARD DNR MONUMENTS ARE:  
2 3/8" O.D. ALUMINUM ALLOY PIPE WITH "BREMENWAY" PLASTIC BASE.  
3 1/4" DIAMETER ALUMINUM ALLOY CAP STAMPED WITH PROPER CORNER IDENTIFICATION, PERMANENT, VERTICALLY ORIENTED. MAGNETS ARE INCLUDED IN THE MONUMENT BASE AND CAP.

STANDARD DNR CAPS ARE:  
1 1/2" DIAMETER ALUMINUM ALLOY DISKS WITH A VERTICALLY ORIENTED JACKET AND STAMPED WITH PROPER CORNER IDENTIFICATION, SET AS NOTED. DNR CORNER MONUMENTS ARE 3" DIAMETER WITH BRASS CAP STAMPED WITH DNR IRON PIPES ARE 1" DIAMETER WITH BRASS CAP STAMPED WITH PROPER CORNER IDENTIFICATION.

CORNER SYMBOLS



J-21 NORTHWEST CORNER SECTION 13

ACCEPTED CORNER  
GLO HISTORY: SET BY THE GLO IN 1857 AND MARKED WITH A POST AND 4 BEARING TREES:  
-5" VINE MAPLE AT N21W 11 LINKS  
-4" VINE MAPLE AT S22W 24 LINKS  
-5" VINE MAPLE AT N40E 22 LINKS  
-4" VINE MAPLE AT S87E 22 LINKS  
IN 1891 GLO FOUND THE POST DESTROYED BY FIRE. RE-ESTABLISHED CORNER WITH AN 18" X 12" X 12" STONE WITH NOTCHES ON SOUTH AND EAST SIDES AND NOTED 4 NEW BEARING TREES:  
-6" VINE MAPLE AT N12E 45 LINKS  
-4" VINE MAPLE AT S4E 50 LINKS  
-6" VINE MAPLE AT S82W 40 LINKS  
-4" VINE MAPLE AT N89W 60 LINKS  
NO EVIDENCE OF THE GLO SURVEY WAS FOUND. ON 4-13-98 THIS SURVEY FOUND THE 5/8" REBAR WITH PLASTIC CAP SET BY SURVEY REFERENCE NO. 1 IN 1981 BY PROPORTION AND GLO CREEK CALLS. A 1" IRON ROD WAS FOUND AT N26E 140.66 FEET, AT THE INTERSECTION OF FENCES RUNNING EAST AND SOUTH. THE ORIGIN OF THIS ROD IS UNKNOWN AND IT IS NOT ACCEPTED AS THE SECTION CORNER.  
THE FOLLOWING REFERENCES TO THE REBAR/CAP WERE NOTED:  
4 RPS:  
-DNR CARSONITE WITNESS POST AT NORTH, 3 FEET.  
-17" FIR AT S61E 12.93 FEET TO HAGEDORN RP.  
-25" FIR AT S23W 11.45 FEET TO HAGEDORN RP.  
-24" FIR AT N62W 10.58 FEET TO HAGEDORN RP.  
FIELD BOOK 3021A, PAGE 8

J-23 NORTH 1/4 CORNER SECTION 13

CALCULATED CORNER  
GLO HISTORY: SET BY THE GLO IN 1857 AND MARKED WITH A POST AND 2 BEARING TREES:  
-8" CHAPARRAL AT N20E 8 LINKS  
-5" VINE MAPLE AT S40E 22 LINKS  
ON THE GLO RANDOM LINE RUNNING EAST, A 1 LINK CREEK RUNNING SOUTH WAS CALLED AT 40.20 CHAINS. THE LENGTH OF THE WILE WAS 80.35 CHAINS AND THE CORNER WAS SET AT 40.27 CHAINS ON THE TRUE LINE RUNNING WEST. THEREFORE, 8 LINKS EAST OF THE CORNER OF THE SURVEY IN SURVEY REFERENCE NO. 1, THE CORNER WAS CALCULATED ON LINE BETWEEN THE SECTION CORNERS AND 8 LINKS (5.3 FEET) EAST OF THE CREEK.  
THIS SURVEY CALCULATED THE CORNER POSITION BY SINGLE PROPORTION BASED ON THE DISTANCES FROM SURVEY REFERENCE NO. 1 ON THE 1981 REBAR WITH PLASTIC CAP. ALUMINUM CAP WAS SET AT THE CALCULATED POSITION. A SMALL CREEK RUNNING SOUTH WAS FOUND 6 FEET WEST OF THE SET CORNER. THE FOLLOWING REFERENCES WERE NOTED:  
3 RPS:  
-DNR CARSONITE WITNESS POST AT NORTH, 1 FOOT.  
-7" LOCUST AT S84E 4.10 FEET TO ALUMINUM NAIL IN SOUTH SIDE.  
-14" FIR AT S11E 26.16 FEET TO ALUMINUM NAIL IN EAST SIDE.  
FIELD BOOK 3021A, PAGE 31

J-25 NORTHEAST CORNER SECTION 13

ACCEPTED CORNER  
GLO HISTORY: SET BY THE GLO IN 1857 AND MARKED WITH A POST AND 4 BEARING TREES:  
-4" VINE MAPLE AT N70E 6 LINKS  
-3" VINE MAPLE AT S35E 8 LINKS  
-4" VINE MAPLE AT S56W 25 LINKS  
-4" VINE MAPLE AT N55W 42 LINKS  
A BROOK, 1 LINK WIDE RUNNING EAST, WAS CALLED 90 LINKS (59.4 FEET) SOUTH OF THE CORNER. IN 1883 U.S. DEPUTY SURVEYOR CHARLES SEARS, WHILE SURVEYING THE TOWNSHIP TO THE EAST, NOTED THAT THE CORNER WAS STANDING BUT BADLY DECAYED. HE SET A NEW POST AND NOTED THE 1857 BEARING TREES AT THE ORIGINAL BEARINGS AND DISTANCES.  
ON 4-20-98 THIS SURVEY FOUND THE 1 1/2" IRON PIPE NOTED IN SURVEY REFERENCE NO. 1 AND THE SURVEYS IN BOOK 32, PAGE 180 (CLARK COUNTY) AND BOOK 3, PAGE 113 (SKAMANIA COUNTY). THE PIPE IS ALSO SHOWN ON THE LAND CORNER RECORD IN BOOK 13, PAGE 26 (CLARK COUNTY).  
A 10" X 12" X 20" STONE WITH AN "X" WAS FOUND NEXT TO THE PIPE - THE ORIGIN OF THIS STONE IS NOT KNOWN.  
A BROOK WAS FOUND 55 FEET SOUTH OF THE CORNER. ITS POSITION MAY HAVE BEEN ALTERED SOMEWHAT BY LOGS. THIS SURVEY DROVE A 5/8" X 36" ALUMINUM ROD WITH STAMPED ALUMINUM CAP INTO THE FOUND IRON PIPE.  
THE FOLLOWING REFERENCES WERE NOTED:  
4 RPS:  
-DNR CARSONITE WITNESS POST AT NORTH, 3 FEET.  
-26" FIR AT N23E 65.30 FEET TO ALUMINUM NAIL IN SOUTHEAST SIDE.  
-28" FIR AT S28E 69.03 FEET TO ALUMINUM NAIL IN EAST SIDE.  
-19" ALDER AT S1W 50.95 FEET TO ALUMINUM NAIL IN EAST SIDE.  
FIELD BOOK 3021A, PAGE 9

L-21 WEST 1/4 CORNER SECTION 13

ACCEPTED CORNER  
ON 4-14-98 THIS SURVEY FOUND THE REBAR WITH PLASTIC CAP SET BY SURVEY REFERENCE NO. 1 AND DESCRIBED ON DNR FINAL MAP 1011 WHICH IS RECORDED IN BOOK 39 PAGE 98 (CLARK COUNTY).

SURVEYOR'S CERTIFICATE

THIS MAP CORRECTLY REPRESENTS A SURVEY MADE BY ME OR UNDER MY DIRECTION IN CONFORMANCE WITH THE REQUIREMENTS OF THE SURVEY RECORING ACT AT THE REQUEST OF THE WASHINGTON STATE DEPARTMENT OF NATURAL RESOURCES  
IN MAY 19 98.

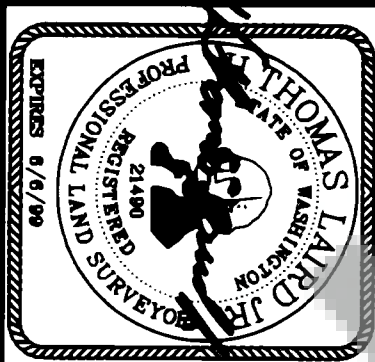
H. Thomas Laird Jr., PLS

21490

SURVEYED BY:  
DRAWN BY:  
DATE:

JAMES K. GORDON  
B. ERIK NIEDEGGARD  
JULY 1998

A SURVEY IN THE NORTH 1/2 OF SECTION 13, TOWNSHIP 2 NORTH, RANGE 4 EAST, W.M.  
STATE OF WASHINGTON  
DEPARTMENT OF NATURAL RESOURCES  
F.M.#1129A



AUDITOR'S CERTIFICATE  
FILED FOR RECORD THIS 28th DAY OF August, 19 98  
AT 3:31 P.M. IN BOOK 3 OF SURVEYS AT PAGE 286  
AT THE REQUEST OF THE WASHINGTON STATE DEPARTMENT OF NATURAL RESOURCES.  
132696  
AUDITOR'S FILE NUMBER  
SKAMANIA COUNTY AUDITOR