

CENTERLINE DATA TABLE

CURVE	RADIUS	LENGTH	DELTA
1	1432.50'	440.03'	127°36'00"
3	955.00'	381.14'	22°52'00"
5	409.30'	160.02'	22°24'00"
7	573.00'	137.51'	13°45'00"

NORTH R/W CURVE DATA TABLE

CURVE	RADIUS	LENGTH	DELTA
9	925.00'	265.02'	17°39'16"
11	439.30'	171.75'	22°24'00"
15	533.00'	113.11'	12°09'35"
17	543.00'	15.08'	01°35'27"

CURVE	RADIUS	LENGTH	DELTA
10	584.29'35"	430.72'	85°20'20"
12	582.05'35"	85.20'	10.00°
13	5273.425"	10.00'	10.00°
14	582.05'35"	128.37'	10.00°
16	51344.52"	10.00'	10.00°
18	57530.35"	153.44'	153.44°

CURVE	RADIUS	LENGTH	DELTA
19	1482.50'	43.07'	01°39'53"
25	985.00'	393.11'	22°52'00"

CURVE	RADIUS	LENGTH	DELTA
20	584.29'35"	15.10'	15.10°
21	582.05'35"	10.00'	10.00°
22	581.37'35"	200.00'	10.00°
23	582.05'35"	10.00'	10.00°
24	581.37'35"	502.90'	502.90°
26	584.29'35"	402.39'	402.39°

DEED REFERENCE
TITKA TO FLEETWOOD & THOMAS GROUP
STATIONARY WARRANTY DEED
BOOK 173, PAGE 325
DATED FEBRUARY 3, 1998

SURVEY
IN THE SW 1/4 NW 1/4 &
THE SE 1/4 NW 1/4 OF
SECTION 5, T1N, R5E, W.M.
SKAMANIA COUNTY, WA.

LINE	DIRECTION	DISTANCE
2	S 61°37'35" E	808.90'
4	S 64°29'35" E	430.72'
6	S 62°05'35" E	213.57'
8	S 75°50'35" E	285.30'

LINE	DIRECTION	DISTANCE
10	S 84°29'35" E	430.72'
12	S 82°05'35" E	85.20'
13	N 27°34'25" E	10.00'
14	S 62°05'35" E	128.37'
16	S 13°44'52" W	10.00'
18	S 75°50'35" E	153.44'

LINE	DIRECTION	DISTANCE
20	S 61°37'35" E	15.10'
21	N 28°22'25" E	10.00'
22	S 61°37'35" E	200.00'
23	N 28°22'25" E	10.00'
24	S 61°37'35" E	502.90'
26	S 84°29'35" E	402.39'

FOUND 1/2" IR 8.35" & 3.5" W
OF POSITION SHOWN IN
R.O.S. 3-173 DUE TO SLUMP
IN SIDE SLOPE OF ROAD

NE CORNER OF S 1/2 NW 1/4
POSITION OF 1/2 IR AS SHOWN
IN R.O.S. 3-173
(NOT TIED IN THIS SURVEY)



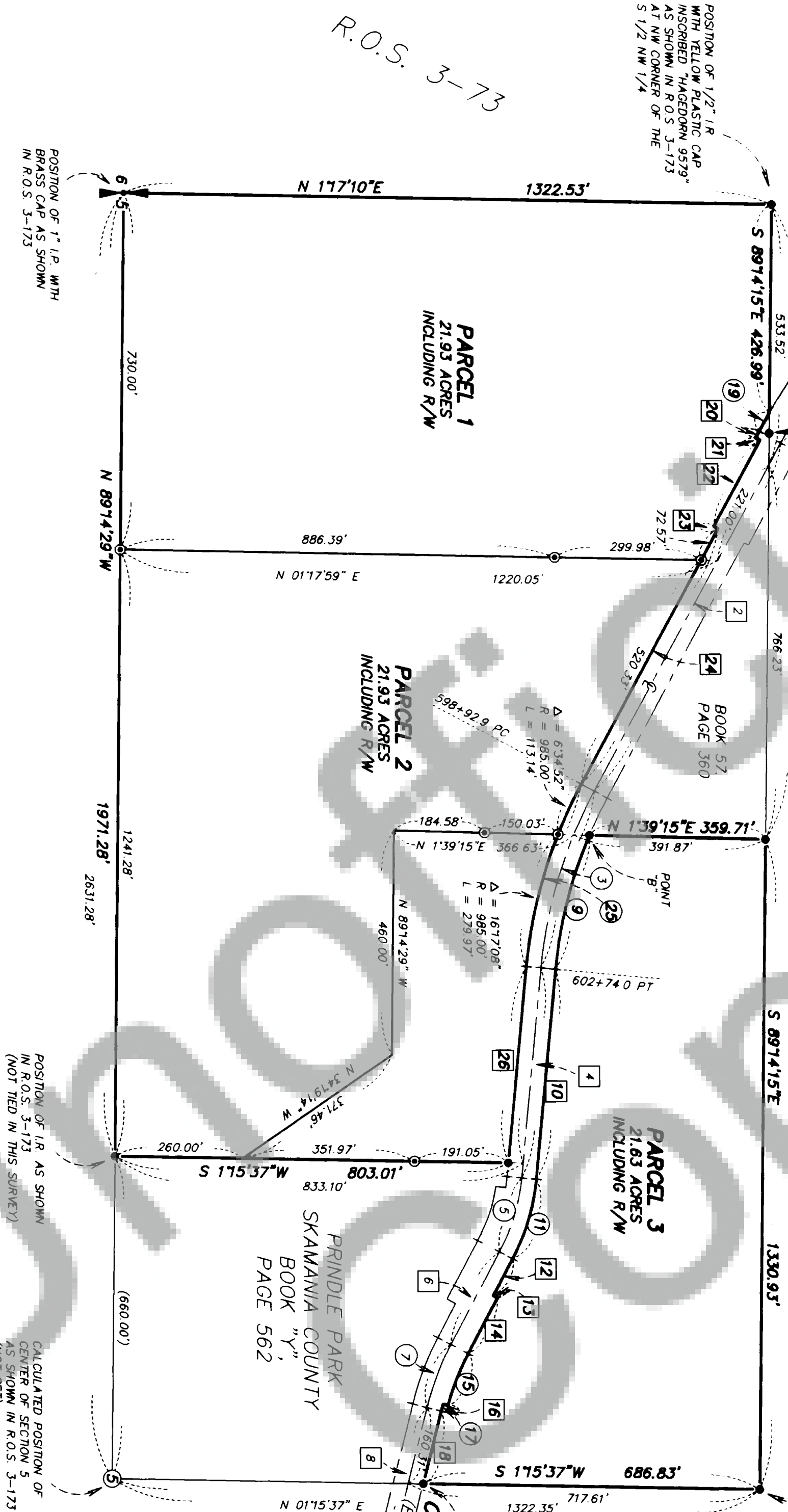
LEGEND

- FOUND 1/2" YELLOW PLASTIC CAP INSCRIBED "GLENNER 15028" UNLESS NOTED OTHERWISE (TIED MARCH, 1998)
- ⊙ SET 1/2" x 24" IRON REBAR WITH YELLOW PLASTIC CAP STAMPED "SMES 31454"
- WITH STEEL FENCEPOST SET ALONGSIDE

R.O.S. = RECORD OF SURVEY

- [2] LINE ANNOTATION (SEE TABLE)
- [3] CURVE ANNOTATION (SEE TABLE)
- () RECORD DIMENSION

R.O.S. 3-173



NARRATIVE

THE PURPOSE OF THIS SURVEY WAS TO SEGREGATE THE "FLEETWOOD AND THOMAS GROUP TRACT" INTO THE 3 PARCELS SHOWN. I FIRST CREATED A MATHEMATICAL MODEL OF ROS 3-173. I THEN RAN A RANDOM TRAVERSE AND MADE RADIAL TIES TO MONUMENTS SET IN SAID SURVEY. I ORIENTED MY RANDOM TRAVERSE BETWEEN MONUMENTS FOUND AT POINTS "A" AND "B" AND THEN PERFORMED A COMPASS RULE BALANCE. THE RIGHT-OF-WAY OF CANYON CREEK ROAD (FORMERLY SR-140) AS SHOWN HEREON WAS DETERMINED BY FIRST CREATING A MATHEMATICAL MODEL OF THE STATE HIGHWAY PLANS APPROVED AUGUST 24, 1937 ON SHEETS 1 AND 2 OF 3. I MADE RADIAL TIES TO APPARENT CENTERLINE OF THE HIGHWAY AND THEN TRANSLATED THE COORDINATES OF MY MATHEMATICAL MODEL TO THE FIELD TIED POSITION FOR STATION 588+66.7 P.I. I THEN ROTATED THE MODEL 00° 10' 20" LEFT ABOUT STATION 588+66.7 P.I. AND THE RESULTANT ALIGNMENT CONFORMS SATISFACTORILY WITH APPARENT CENTERLINE. CORNER MONUMENTS WERE PLACED BY RADIAL STAKEOUT. SURVEY EQUIPMENT USED CONSISTED OF A 5-SECOND "TOTAL STATION INSTRUMENT" AND ELECTRONIC DATA COLLECTOR. FIELD WORK MET THE STANDARDS CONTAINED IN W.A.C. 332-130-090.

SURVEYOR'S CERTIFICATE

This map correctly represents a survey made by me or under my direction in conformance with the requirements of the Survey Recording Act at the request of THE FLEETWOOD & THOMAS GROUP in APRIL 19 98



AUDITOR'S CERTIFICATE

Filed for record this 11th day of June, 1998 at 9:32am.
in Book 3 of surveys at Page 281 at the request of
Hogedorn, Inc.
(Signed) Deputy County Auditor

NOTE: Hogedorn, Inc. makes no warranties as to matters of unwritten title such as acquiescence, estoppel, adverse possession, etc.

HAGEDORN, INC.

1924 Broadway Vancouver, Wa. 98663
Ph: (360) 696-4428 (503) 283-6778

SCALE: 1"=200'	CALC. BY: DLS	DWG# 98-0275
DATE: 4/9/98	DRAWN BY: CC	
JOB NO.: 98-027	CHECKED BY: CEW	SHEET 1 OF 1