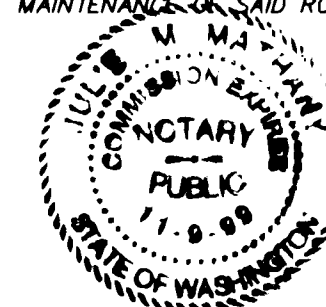


"DANIEL MIU"
SHORT PLATIN THE NE 1/4 SW 1/4 & NW 1/4 SE 1/4
OF SECTION 33, T2N, R5E, W.M.
SKAMANIA COUNTY, WA.WE, OWNERS OF THE ABOVE TRACT OF LAND, HEREBY DECLARE AND
CERTIFY THIS SHORT PLAT TO BE TRUE AND CORRECT TO THE BEST
OF OUR ABILITIES, AND THAT THIS SHORT SUBDIVISION HAS BEEN
MADE WITH OUR FREE CONSENT AND IN ACCORDANCE WITH OUR
DESIRES. FURTHER, WE DEDICATE ALL ROAD AS SHOWN, NOT NOTED
AS PRIVATE, AND WAIVE ALL CLAIMS FOR DAMAGES AGAINST ANY
GOVERNMENTAL AGENCY ARISING FROM THE CONSTRUCTION AND
MAINTENANCE OF SAID ROADS.Enid Delwin Rand
OWNERJulie M. Matheny 4-27-98
NOTARY PUBLIC DATETHE LOTS IN THIS SHORT PLAT CONTAIN ADEQUATE AREA AND PROPER
SOIL, TOPOGRAPHIC AND DRAINAGE CONDITIONS TO BE SERVED BY AN
ONSITE SEWAGE DISPOSAL SYSTEM UNLESS OTHERWISE NOTED ON THE
SHORT PLAT MAP. ADEQUACY OF WATER SUPPLY IS NOT GUARANTEED
UNLESS SO NOTED ON THE SHORT PLAT MAP.Martin Gussell RS 4-23-98
S. W. WASHINGTON HEALTH DISTRICT DATEI, William W. Giffe, COUNTY ENGINEER OF SKAMANIA COUNTY,
WASH., CERTIFY THAT THIS PLAT MEETS CURRENT SKAMANIA COUNTY
SURVEY REQUIREMENTS; CERTIFY THAT ANY ROADS AND/OR BRIDGES
DEVELOPED IN CONJUNCTION WITH THE APPROVED PLAN, MEET CURRENT
SKAMANIA COUNTY DEVELOPMENT STANDARDS FOR ROADS; CERTIFY THAT
THE CONSTRUCTIONS OF ANY STRUCTURES, REQUIRED FOR AND PRIOR TO
FINAL APPROVAL, MEETS STANDARD ENGINEERING SPECIFICATIONS; APPROVE
THE LAYOUT OF ROADS AND EASEMENTS; AND, APPROVE THE ROAD
NAME(S) AND NUMBER(S) OF SUCH ROAD(S).William W. Giffe 4/23/98
COUNTY ENGINEER DATETAX LOT NO. 02-05-88-00-2500
ALL TAXES AND ASSESSMENTS ON PROPERTY INVOLVED WITH THIS
SHORT PLAT HAVE BEEN PAID, DISCHARGED OR SATISFIED.Sam R. Wyminger Deputy 5-25-98
COUNTY TREASURER DATETHE LAYOUT OF THIS SHORT SUBDIVISION COMPLIES WITH ORDINANCE
1980-07 REQUIREMENTS, AND THE SHORT PLAT IS APPROVED SUBJECT
TO RECORDING IN THE SKAMANIA COUNTY AUDITOR'S OFFICE.Mark J. Mazurki 4-27-98
COUNTY PLANNING DEPARTMENT DATE

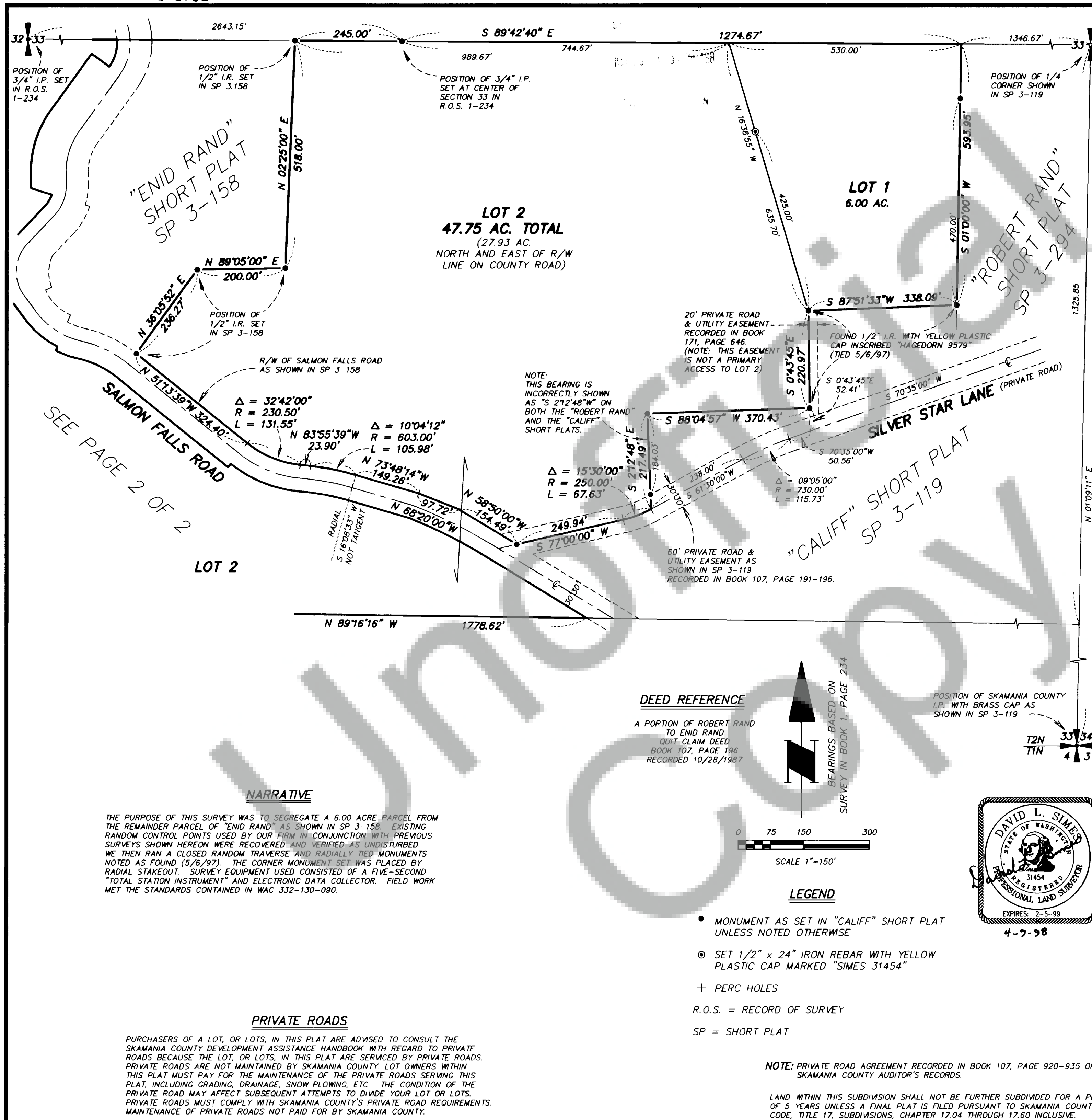
SURVEYOR'S CERTIFICATE

THIS MAP CORRECTLY REPRESENTS A SURVEY MADE BY ME OR UNDER
MY DIRECTION IN CONFORMANCE WITH THE REQUIREMENTS OF THE
SURVEY RECORDING ACT AT THE REQUEST OF

ENID RAND IN APRIL 1998

David L. Simes 31454
SURVEYOR CERTIFICATE No.STATE OF WASHINGTON
COUNTY OF SKAMANIAI HEREBY CERTIFY THAT THE WITHIN INSTRUMENT OF WRITING FILED BY
Mark Mazurki OF Planning Dept. 4:37 P.M.
WAS RECORDED IN BOOK 3 OF Short Plats AT PAGE 328-9Gary Laury 5/29/98
RECORDER OF SKAMANIA COUNTY, WASHINGTON
Gary M. Olson by G. Laury
COUNTY AUDITOR

HAGEDORN, INC.	
1924 Broadway Vancouver, Wa. 98663	
Ph: (360) 696-4428 (503) 283-6778	
SCALE: 1"=150'	CALC. BY: DLS
DATE: 5/12/97	DRAWN BY: CC
JOB NO.: 97-006	CHECKED BY: CEW
SHEET 1 OF 2	



PAGE 328-329

PAGE

SHORT PLATS

3

BOOK

PAGE 2 OF 2
"DANIEL MIU"
SHORT PLAT
IN THE NE 1/4 SW 1/4 & NW 1/4 SE 1/4
OF SECTION 33, T2N, R5E, W1M,
SKAMANIA COUNTY, WA.

NOTE:
THE R/W SHOWN
IN THIS AREA WAS
DIGITIZED FROM THE
ASSESSOR'S MAP.
ACTUAL R/W WAS
NOT DETERMINED
IN THIS SURVEY

POSITION OF
3/4" I.P. SET
IN R.O.S.
1-234

POSITION OF
CORNER SET IN
"KREIGER S.P."
(BK.3, PG.67)

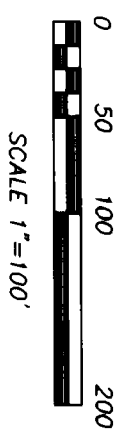
60' PRIVATE ROAD
& UTILITY EASEMENT
AS SHOWN IN "KREIGER
S.P." (BK.3, PG.67)
RECORDED IN DEED
BK.82, PG.185 & 186
(ACTUAL LOCATION
NOT DETERMINED
IN THIS SURVEY)

SKAMANIA COUNTY
DEED BK-37, PG-37
RECORDED 5/1/1953

"ENID RAND"
SHORT PLAT
SP 3-158

POSITION OF
1/2" R. SET
IN SP 3-158

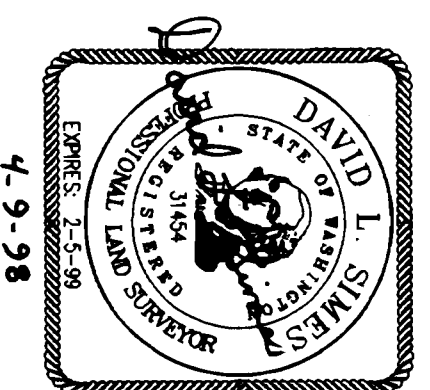
POSITION OF 3/4" I.P.
SET AT CENTER OF
SECTION 33 IN
R.O.S. 1-234



BEARINGS BASED ON
SURVEY IN BOOK 1, PAGE 234

LEGEND

- MONUMENT AS SET IN "CALIFF" SHORT PLAT
UNLESS NOTED OTHERWISE
- R.O.S. = RECORD OF SURVEY
- SP = SHORT PLAT



SEE PAGE 1 OF 2

LOT 2
47.75 ACRES TOTAL

(19.82 AC. SW OF R/W LINE INCLUDING
1.01 AC. TRACT IN NW CORNER)

LOT 2
47.75 ACRES TOTAL
(27.93 AC. NORTH AND EAST
OF R/W LINE ON COUNTY ROAD)

N 01°34'42" E
764.65'

N 01°34'42" E 458.83'

N 25°05'00" E 505.29'

S 38°48'00" W 674.00'

S 05°33'39" W 28.10'

N 72°44'22" W 30.00'

N 43°32'21" E 88.90'

N 03°33'39" W 28.10'

N 72°44'22" W 30.00'

N 43°32'21" E 88.90'

N 03°33'39" W 28.10'

N 72°44'22" W 30.00'

N 43°32'21" E 88.90'

N 03°33'39" W 28.10'

N 72°44'22" W 30.00'

N 43°32'21" E 88.90'

N 03°33'39" W 28.10'

N 72°44'22" W 30.00'

N 43°32'21" E 88.90'

N 03°33'39" W 28.10'

N 72°44'22" W 30.00'

N 43°32'21" E 88.90'

N 03°33'39" W 28.10'

N 72°44'22" W 30.00'

N 43°32'21" E 88.90'

N 03°33'39" W 28.10'

N 72°44'22" W 30.00'

N 43°32'21" E 88.90'

N 03°33'39" W 28.10'

N 72°44'22" W 30.00'

N 43°32'21" E 88.90'

N 03°33'39" W 28.10'

N 72°44'22" W 30.00'

N 43°32'21" E 88.90'

N 03°33'39" W 28.10'

N 72°44'22" W 30.00'

N 43°32'21" E 88.90'

N 03°33'39" W 28.10'

N 72°44'22" W 30.00'

N 43°32'21" E 88.90'

N 03°33'39" W 28.10'

N 72°44'22" W 30.00'

N 43°32'21" E 88.90'

N 03°33'39" W 28.10'

N 72°44'22" W 30.00'

N 43°32'21" E 88.90'

N 03°33'39" W 28.10'

N 72°44'22" W 30.00'

N 43°32'21" E 88.90'

N 03°33'39" W 28.10'

N 72°44'22" W 30.00'

N 43°32'21" E 88.90'

N 03°33'39" W 28.10'

N 72°44'22" W 30.00'

N 43°32'21" E 88.90'

N 03°33'39" W 28.10'

N 72°44'22" W 30.00'

N 43°32'21" E 88.90'

N 03°33'39" W 28.10'

N 72°44'22" W 30.00'

N 43°32'21" E 88.90'

N 03°33'39" W 28.10'

N 72°44'22" W 30.00'

N 43°32'21" E 88.90'

N 03°33'39" W 28.10'

N 72°44'22" W 30.00'

N 43°32'21" E 88.90'

N 03°33'39" W 28.10'

N 72°44'22" W 30.00'

N 43°32'21" E 88.90'

N 03°33'39" W 28.10'

N 72°44'22" W 30.00'

N 43°32'21" E 88.90'

N 03°33'39" W 28.10'

N 72°44'22" W 30.00'

N 43°32'21" E 88.90'

N 03°33'39" W 28.10'

N 72°44'22" W 30.00'

N 43°32'21" E 88.90'

N 03°33'39" W 28.10'

N 72°44'22" W 30.00'

N 43°32'21" E 88.90'

N 03°33'39" W 28.10'

N 72°44'22" W 30.00'

N 43°32'21" E 88.90'

N 03°33'39" W 28.10'

N 72°44'22" W 30.00'

N 43°32'21" E 88.90'

N 03°33'39" W 28.10'

N 72°44'22" W 30.00'

N 43°32'21" E 88.90'

N 03°33'39" W 28.10'

N 72°44'22" W 30.00'

N 43°32'21" E 88.90'

N 03°33'39" W 28.10'

N 72°44'22" W 30.00'

N 43°32'21" E 88.90'

N 03°33'39" W 28.10'

N 72°44'22" W 30.00'

N 43°32'21" E 88.90'

N 03°33'39" W 28.10'

N 72°44'22" W 30.00'

N 43°32'21" E 88.90'

N 03°33'39" W 28.10'

N 72°44'22" W 30.00'

N 43°32'21" E 88.90'

N 03°33'39" W 28.10'

N 72°44'22" W 30.00'

N 43°32'21" E 88.90'

N 03°33'39" W 28.10'

N 72°44'22" W 30.00'

N 43°32'21" E 88.90'

N 03°33'39" W 28.10'

N 72°44'22" W 30.00'

N 43°32'21" E 88.90'

N 03°33'39" W 28.10'

N 72°44'22" W 30.00'

N 43°32'21" E 88.90'

N 03°33'39" W 28.10'

N 72°44'22" W 30.00'

N 43°32'21" E 88.90'

N 03°33'39" W 28.10'

N 72°44'22" W 30.00'

N 43°32'21" E 88.90'

N 03°33'39" W 28.10'

N 72°44'22" W 30.00'

N 43°32'21" E 88.90'

N 03°33'39" W 28.10'

N 72°44'22" W 30.00'

N 43°32'21" E 88.90'

N 03°33'39" W 28.10'

N 72°44'22" W 30.00'

N 43°32'21" E 88.90'

N 03°33'39" W 28.10'

N 72°44'22" W 30.00'

N 43°32'21" E 88.90'

N 03°33'39" W 28.10'

N 72°44'22" W 30.00'

N 43°32'21" E 88.90'

N 03°33'39" W 28.10'

N 72°44'22" W 30.00'

N 43°32'21" E 88.90'

N 03°33'39" W 28.10'

N 72°44'22" W 30.00'

N 43°32'21" E 88.90'

N 03°33'39" W 28.10'

N 72°44'22" W 30.00'

N 43°32'21" E 88.90'

N 03°33'39" W 28.10'

N 72°44'22" W 30.00'

N 43°32'21" E 88.90'

N 03°33'39" W 28.10'

N 72°44'22" W 30.00'

N 43°32'21" E 88.90'

N 03°33'39" W 28.10'

N 72°44'22" W 30.00'

N 43°32'21" E 88.90'

N 03°33'39" W 28.10'

N 72°44'22" W 30.00'

N 43°32'21" E 88.90'

N 03°33'39" W 28.10'

N 72°44'22" W 30.00'

N 43°32'21" E 88.90'

N 03°33'39" W 28.10'

N 72°44'22" W 30.00'

N 43°32'21" E 88.90'

N 03°33'39" W 28.10'

N 72°44'22" W 30.00'

N 43°32'21" E 88.90'

N 03°33'39" W 28.10'

N 72°44'22" W 30.00'

N 43°32'21" E 88.90'

N 03°33'39" W 28.10'

N 72°44'22" W 30.00'

N 43°32'21" E 88.90'

N 03°33'39" W 28.10'

N 72°44'22" W 30.00'

N 43°32'21" E 88.90'

N 03°33'39" W 28.10'

N 72°44'22" W 30.00'

N 43°32'21" E 88.90'

N 03°33'39" W 28.10'

N 72°44'22" W 30.00'

N 43°32'21" E 88.90'

N 03°33'39" W 28.10'

N 72°44'22" W 30.00'

N 43°32'21" E 88.90'

N 03°33'39" W 28.10'

N 72°44'22" W 30.00'

N 43°32'21" E 88.90'

N 03°33'39" W 28.10'

N 72°44'22" W 30.00'

N 43°32'21" E 88.90'

N 03°33'39" W 28.10'

N 72°44'22" W 30.00'

N 43°32'21" E 88.90'

N 03°33'39" W 28.10'

N 72°44'22" W 30.00'

N 43°32'21" E 88.90'

N 03°33'39" W 28.10'

N 72°44'22" W 30.00'

N 43°32'21" E 88.90'

N 03°33'39" W 28.10'

N 72°44'22" W 30.00'

N 43°32'21" E 88.90'

N 03°33'39" W 28.10'

N 72°44'22" W 30.00'

N 43°32'21" E 88.90'

N 03°33'39" W 28.10'

N 72°44'22" W 30.00'

N 43°32'21" E 88.90'

N