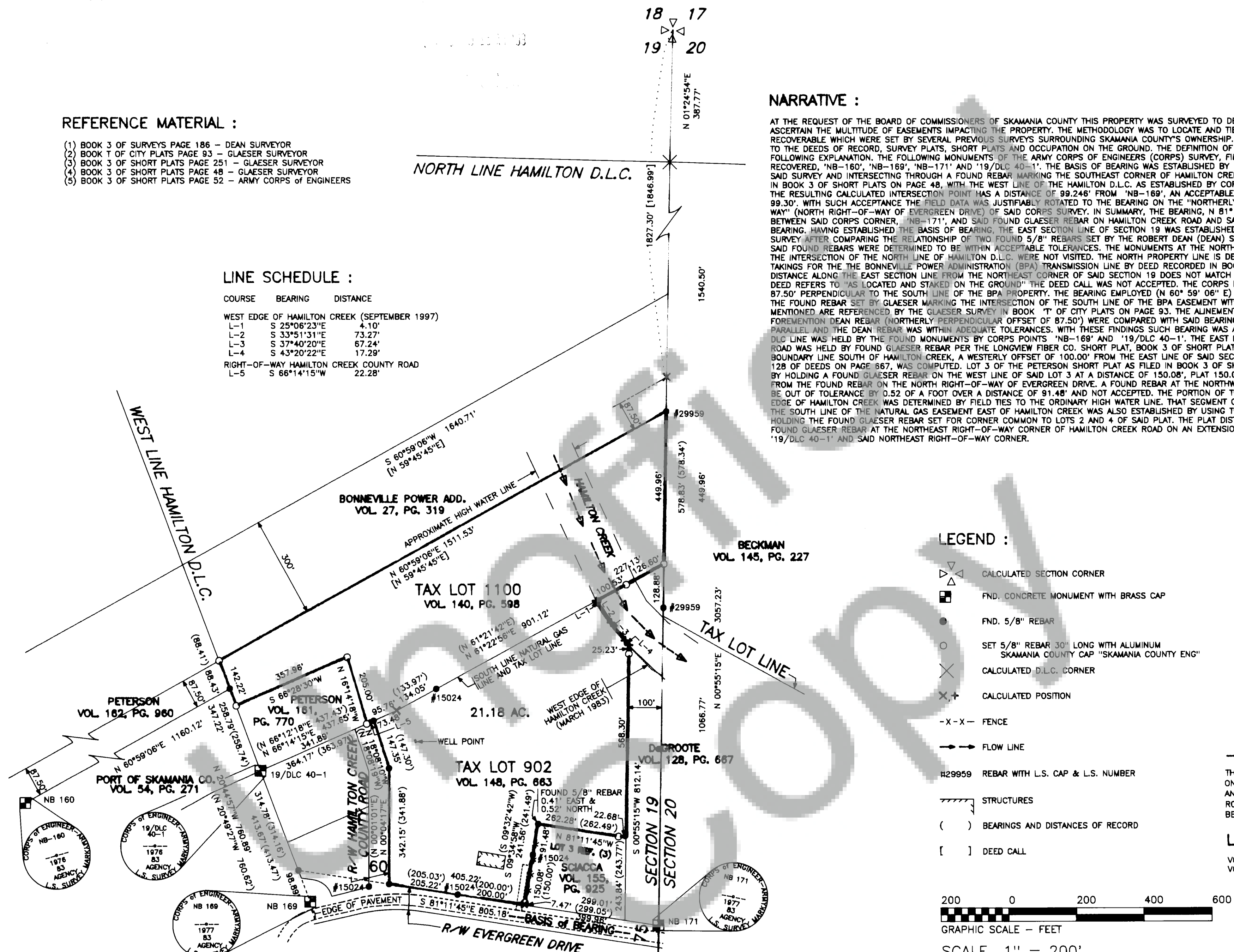


REFERENCE MATERIAL :

- (1) BOOK 3 OF SURVEYS PAGE 186 - DEAN SURVEYOR
- (2) BOOK 1 OF CITY PLATS PAGE 93 - GLAESER SURVEYOR
- (3) BOOK 3 OF SHORT PLATS PAGE 251 - GLAESER SURVEYOR
- (4) BOOK 3 OF SHORT PLATS PAGE 48 - GLAESER SURVEYOR
- (5) BOOK 3 OF SHORT PLATS PAGE 52 - ARMY CORPS OF ENGINEERS

LINE SCHEDULE :

COURSE	BEARING	DISTANCE
WEST EDGE OF HAMILTON CREEK (SEPTEMBER 1997)		
L-1	S 25°06'23"E	4.10'
L-2	S 33°51'31"E	73.27'
L-3	S 37°40'20"E	67.24'
L-4	S 43°20'22"E	17.29'
RIGHT-OF-WAY HAMILTON CREEK COUNTY ROAD		
L-5	S 66°14'15"W	22.28'



NARRATIVE :

AT THE REQUEST OF THE BOARD OF COMMISSIONERS OF SKAMANIA COUNTY THIS PROPERTY WAS SURVEYED TO DETERMINE THE BOUNDARIES AND TO ASCERTAIN THE MULTITUDE OF EASEMENTS IMPACTING THE PROPERTY. THE METHODOLOGY WAS TO LOCATE AND TIE INTO ALL CORNERS THAT WERE RECOVERABLE WHICH WERE SET BY SEVERAL PREVIOUS SURVEYS SURROUNDING SKAMANIA COUNTY'S OWNERSHIP. THEN APPLYING THE FOUND MONUMENTS TO THE DEEDS OF RECORD, SURVEY PLATS, SHORT PLATS AND OCCUPATION ON THE GROUND. THE DEFINITION OF THIS SURVEY IS ILLUSTRATED BY THE FOLLOWING EXPLANATION. THE FOLLOWING MONUMENTS OF THE ARMY CORPS OF ENGINEERS (CORPS) SURVEY, FILED IN BOOK 3 OF SURVEYS ON PAGE 52, WERE RECOVERED, 'NB-160', 'NB-169', 'NB-171' AND '19/DLC 40-1'. THE BASIS OF BEARING WAS ESTABLISHED BY HOLDING THE INITIAL POINT, 'NB-171', OF SAID SURVEY AND INTERSECTING THROUGH A FOUND REBAR MARKING THE SOUTHEAST CORNER OF HAMILTON CREEK ROAD, ROBERT GLAESER (GLAESER) SURVEY IN BOOK 3 OF SHORT PLATS ON PAGE 48, WITH THE WEST LINE OF THE HAMILTON D.L.C. AS ESTABLISHED BY CORPS MONUMENTS, 'NB-168' AND '19/DLC 40-1'. THE RESULTING CALCULATED INTERSECTION POINT HAS A DISTANCE OF 99.246' FROM 'NB-169', AN ACCEPTABLE TOLERANCE TO THE PLAT DISTANCE OF 99.30'. WITH SUCH ACCEPTANCE THE FIELD DATA WAS JUSTIFIABLY ROTATED TO THE BEARING ON THE "NORTHERLY LINE OF OLD STATE HIGHWAY 14 RIGHT-OF-WAY" (NORTH RIGHT-OF-WAY OF EVERGREEN DRIVE) OF SAID CORPS SURVEY. IN SUMMARY, THE BEARING, N 81° 11' 45" W, WAS IMPLEMENTED ON THE LINE BETWEEN SAID CORPS CORNER, 'NB-171', AND SAID FOUND GLAESER REBAR ON HAMILTON CREEK ROAD AND SAID LINE WAS USED AS THE BASIS OF BEARING. HAVING ESTABLISHED THE BASIS OF BEARING, THE EAST SECTION LINE OF SECTION 19 WAS ESTABLISHED BY HOLDING THE ANGLE ON SAID CORPS SURVEY AFTER COMPARING THE RELATIONSHIP OF TWO FOUND 5/8" REBARS SET BY THE ROBERT DEAN (DEAN) SURVEY IN BOOK 3 OF SURVEYS ON PAGE 186. SAID FOUND REBARS WERE DETERMINED TO BE WITHIN ACCEPTABLE TOLERANCES. THE MONUMENTS AT THE NORTHEAST CORNER OF SAID SECTION 19 AND AT THE INTERSECTION OF THE NORTH LINE OF HAMILTON D.L.C. WERE NOT VISITED. THE NORTH PROPERTY LINE IS DETERMINED BY THE SECTION INVOLVED IN THE TAKINGS FOR THE BONNEVILLE POWER ADMINISTRATION (BPA) TRANSMISSION LINE BY DEED RECORDED IN BOOK 27 OF DEEDS ON PAGE 319. THE CALLED DISTANCE ALONG THE EAST SECTION LINE FROM THE NORTHEAST CORNER OF SAID SECTION 19 DOES NOT MATCH OCCUPATION BY ABOUT 19.5 FEET. AS SAID DEED REFERS TO "AS LOCATED AND STAKED ON THE GROUND" THE DEED CALL WAS NOT ACCEPTED. THE CORPS POINT 'NB-160' WAS HELD AS A POINT 87.50' PERPENDICULAR TO THE SOUTH LINE OF THE BPA PROPERTY. THE BEARING EMPLOYED (N 60° 59' 08" E) IS THE LINE BETWEEN SAID 'NB-160' AND THE FOUND REBAR SET BY GLAESER MARKING THE INTERSECTION OF THE SOUTH LINE OF THE BPA EASEMENT WITH THE HAMILTON D.L.C. LINE. BOTH POINTS MENTIONED ARE REFERENCED BY THE GLAESER SURVEY IN BOOK 'T' OF CITY PLATS ON PAGE 93. THE ALINEMENT OF THE BPA TOWERS AND THE FOREMENTIONED DEAN REBAR (NORTHERLY PERPENDICULAR OFFSET OF 87.50') WERE COMPARED WITH SAID BEARING. THE TOWERS MATCHED WELL FOR BEING PARALLEL AND THE DEAN REBAR WAS WITHIN ADEQUATE TOLERANCES. WITH THESE FINDINGS SUCH BEARING WAS ACCEPTED. THE WEST LINE OF THE HAMILTON D.L.C. LINE WAS HELD BY THE FOUND MONUMENTS BY CORPS POINTS 'NB-168' AND '19/DLC 40-1'. THE EAST RIGHT-OF-WAY LINE OF HAMILTON CREEK ROAD WAS HELD BY FOUND GLAESER REBAR PER THE LONGVIEW FIBER CO. SHORT PLAT, BOOK 3 OF SHORT PLATS ON PAGE 48. IN DETERMINING THE EAST BOUNDARY LINE SOUTH OF HAMILTON CREEK, A WESTERLY OFFSET OF 100.00' FROM THE EAST LINE OF SAID SECTION 19, PER DEED AS RECORDED IN BOOK 128 OF DEEDS ON PAGE 667, WAS COMPUTED. LOT 3 OF THE PETERSON SHORT PLAT AS FILED IN BOOK 3 OF SHORT PLATS ON PAGE 251 WAS ESTABLISHED BY HOLDING A FOUND GLAESER REBAR ON THE WEST LINE OF SAID LOT 3 AT A DISTANCE OF 150.08', PLAT 150.01', AND A HELD DISTANCE OF 200.00' FROM THE FOUND REBAR ON THE NORTH RIGHT-OF-WAY OF EVERGREEN DRIVE. A FOUND REBAR AT THE NORTHWEST CORNER OF SAID LOT 3 WAS FOUND TO BE OUT OF TOLERANCE BY 0.52 OF A FOOT OVER A DISTANCE OF 91.48' AND NOT ACCEPTED. THE PORTION OF THE PROPERTY LINE DEFINED BY THE WEST EDGE OF HAMILTON CREEK WAS DETERMINED BY FIELD TIES TO THE ORDINARY HIGH WATER LINE. THAT SEGMENT OF THE BOUNDARY WHICH IS DESIGNATED BY THE SOUTH LINE OF THE NATURAL GAS EASEMENT EAST OF HAMILTON CREEK WAS ALSO ESTABLISHED BY USING THE LONGVIEW FIBER CO. SHORT PLAT BY HOLDING THE FOUND GLAESER REBAR SET FOR CORNER COMMON TO LOTS 2 AND 4 OF SAID PLAT. THE PLAT DISTANCE OF 73.48' WAS HELD FROM THE FOUND GLAESER REBAR AT THE NORTHEAST RIGHT-OF-WAY CORNER OF HAMILTON CREEK ROAD ON AN EXTENSION LINE BETWEEN THE CORPS CORNER '19/DLC 40-1' AND SAID NORTHEAST RIGHT-OF-WAY CORNER.

LEGEND :

- △ CALCULATED SECTION CORNER
- FND. CONCRETE MONUMENT WITH BRASS CAP
- FND. 5/8" REBAR
- SET 5/8" REBAR 30" LONG WITH ALUMINUM SKAMANIA COUNTY CAP "SKAMANIA COUNTY ENG"
- × CALCULATED D.L.C. CORNER
- ×+ CALCULATED POSITION
- X-X- FENCE
- FLOW LINE
- #29959 REBAR WITH L.S. CAP & L.S. NUMBER
- STRUCTURES
- () BEARINGS AND DISTANCES OF RECORD
- [] DEED CALL

--BASIS OF BEARING--

THE BEARING, N 81° 11' 45" W, WAS IMPLEMENTED ON THE LINE BETWEEN CORPS CORNER, 'NB-171', AND FOUND GLAESER REBAR ON HAMILTON CREEK ROAD AND SAID LINE WAS USED AS THE BASIS OF BEARING.

LEGAL DESCRIPTION :

VOLUME 140, PAGE 598
VOLUME 148, PAGE 663



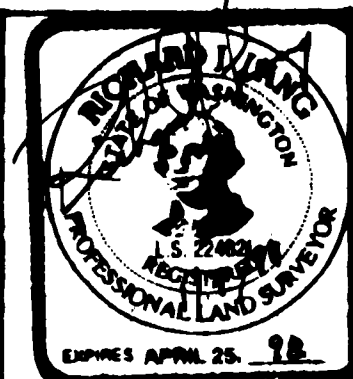
AUDITOR'S CERTIFICATE :

FILED FOR RECORD THIS 9th DAY OF January, 1998
AT 9:10 A.M. IN BOOK 3 OF Surveys AT
PAGE 271-2 AT THE REQUEST OF RICHARD J. LANG

Mary M. Olson by P. Leary
COUNTY AUDITOR Deputy

SURVEYOR'S CERTIFICATE

THIS MAP CORRECTLY REPRESENTS A SURVEY MADE BY ME OR UNDER MY DIRECTION IN CONFORMANCE WITH THE REQUIREMENTS OF THE SURVEY RECORDING ACT AT THE REQUEST OF BOARD OF COMMISSIONERS OF SKAMANIA COUNTY
IN APRIL 1997
CERTIFICATE NO. 22482



SKAMANIA COUNTY

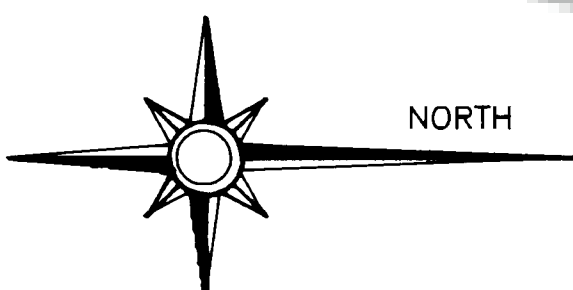
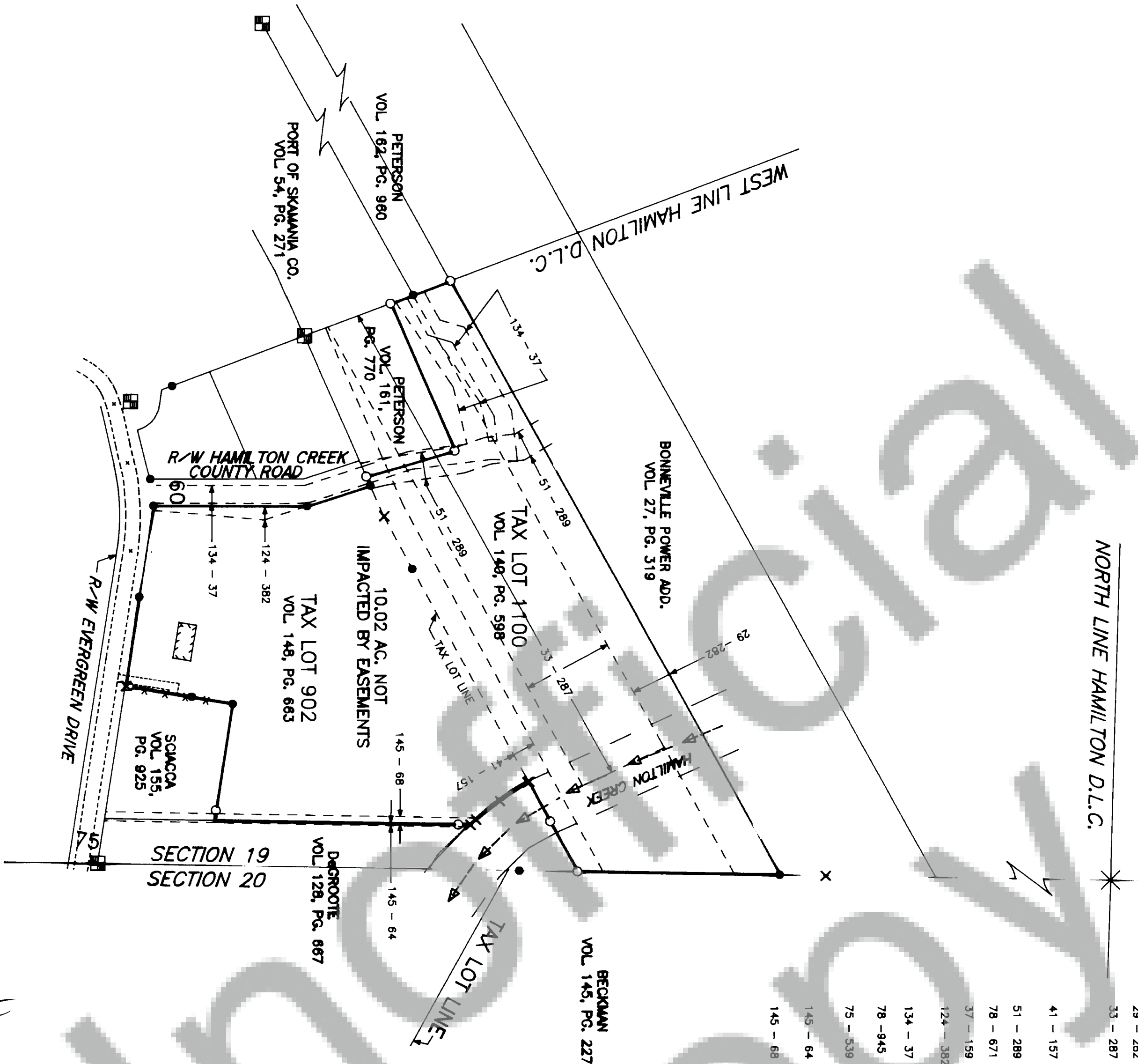
P.O.B. 790
STEVENSON, WASHINGTON
98648
509-427-9448

PROPERTY SURVEY
FOR
SKAMANIA COUNTY

HAMILTON D.L.C. SECTION 19 T. 2 N. R. 7 E. W. SKAMANIA CO. WA.
OWN BY: R.J.L. JOB NO: NOBONNEVILLE DATE: JANUARY, 1998
CHK'D BY: R.J.L. SCREEN FILE: 19-2-7 & NOBONPRO SHEET: 1 OF 2

EASEMENT SCHEDULE:

BOOK-PAGE	WIDTH	GRANTOR	GRANTEE	YEAR	TYPE	NOTES
29 - 282	87.50'	P.J. McGOWAN & SONS	U.S.A.	1942	TRANSMISSION LINE	STRIP DESCRIPTION
33 - 287	200.00'	HERMAN & MATHILDA KROENST, PAUL & ROSE KROENST, AND PAUL & JANE CAREY	U.S.A.	1950	CLEARING LIMITS OF BRUSH, TIMBER AND FIRE HAZARDS	STRIP DESCRIPTION
41 - 157	50.00'	LONGVIEW FIBER CO.	PACIFIC NORTHWEST PIPELINE CORP.	1956	OIL & GAS PIPELINE	STRIP DESCRIPTION
51 - 289	60.00'	LONGVIEW FIBER CO.	D.N.R.	1963	INGRESS, EGRESS INCLUDING LOGGING	STRIP DESCRIPTION
78 - 671	20.00'	LONGVIEW FIBER CO.	U.S.A.	1980	INGRESS, EGRESS & MAINTENANCE	**INSIDE 51 - 289
37 - 159	14.00'	ALBERT, LILY ROBBINS	U.S.A.	1953	INGRESS, EGRESS, WATER & UTILITY LINES	**INSIDE 51 - 289 METES & BOUNDS
124 - 382	VARIES	KENNETH & ELSIE PETERSON	CITY OF NORTH BONNEVILLE	1991		
134 - 37	VARIES	U.S.A.	CITY OF NORTH BONNEVILLE	1993	INGRESS, EGRESS, UTILITIES & PIPELINE	STRIP DESCRIPTION AND METES & BOUNDS
78 - 945	40.00'	LONGVIEW FIBER CO.	U.S.A.	1980	INGRESS, EGRESS, UTILITIES & PIPELINE	**INSIDE 134 - 37
75 - 539	VARIES	LONGVIEW FIBER CO.	U.S.A.	1978	INGRESS, EGRESS, UTILITIES & PIPELINE	**INSIDE 134 - 37
145 - 64	5.00'	GEORGE & GLORIA DEGROROTE	SKAMANIA COUNTY	1994	DRAINAGE	STRIP DESCRIPTION (OFF PROPERTY)
145 - 68	15.00'	KENNETH & ELSIE PETERSON	SKAMANIA COUNTY	1994	DRAINAGE	STRIP DESCRIPTION IN CONJUNCTION WITH 145 - 64



SCALE 1" = 200'

SURVEYOR'S CERTIFICATE

THIS MAP CORRECTLY REPRESENTS A SURVEY MADE BY ME OR UNDER MY DIRECTION IN CONFORMANCE WITH THE REQUIREMENTS OF THE SURVEY RECORDING ACT AT THE REQUEST OF BOARD OF COMMISSIONERS OF SKAMANIA COUNTY

IN APRIL 1998

CERTIFICATE NO. 22489

SKAMANIA COUNTY

P.O. B. 790
STEVENSON, WASHINGTON 98648

509-427-9448

PROPERTY SURVEY FOR SKAMANIA COUNTY

HAMILTON D.L.C. SECTION 19 T. 2 N. R. 7 E. W. SKAMANIA CO., WA.

DWN BY: RUL

JOB NO: NOBONNEVILLE

DATE: JANUARY, 1998

CHK'D BY: JLL

SCREEN FILE: 19-2-7 8 NOBONPRO

SHEET: 2 OF 2