

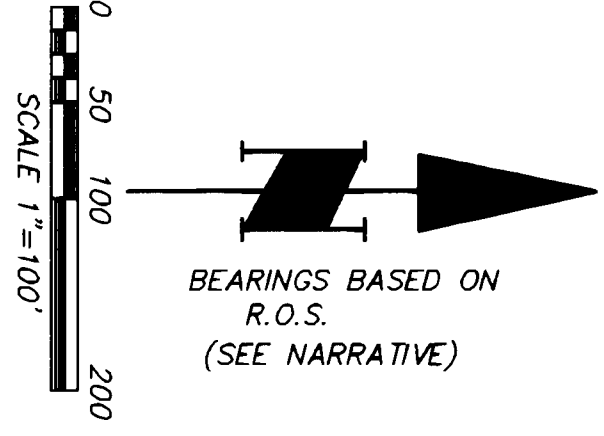
126678

BOOK 3 PAGE 243

FILED
JUL 12 4 14 PM '96
CLERK OF COURTS
SPOKANE, IDAHO

DEED REFERENCE
LOT 8: DAVIS ET AL TO HANNIGAN, ET AL
DEED BOOK 129, PAGE 493 (6/29/92)
LOT 7: DAVIS ET AL TO HANNIGAN, ET AL
DEED BOOK 130, PG. 508 (9/2/92)
BOUNDARY ADJUSTMENT
OF LOTS 7 & 8:
RICHARD HANNIGAN, ET UX AND
WESLEY HANNIGAN, ET UX
DEED BOOK 151, PG. 418 (7/27/95)

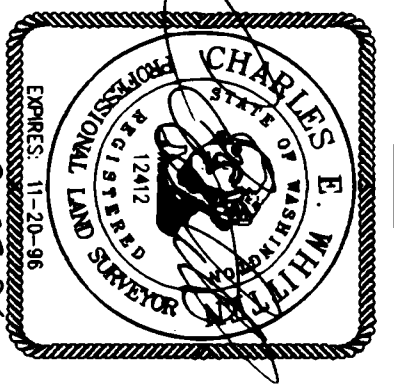
SURVEY
IN LOTS 7 & 8 OF
"MAPLE VIEW ACRES"
BOOK "B" OF PLATS, PAGE 66,
in the SW 1/4 NE 1/4 OF
SECTION 6, T1N, R5E, W.M.
SKAMANIA COUNTY, WA.



- LEGEND**
- POSITION OF I.R. AS SHOWN IN "MAPLE VIEW ACRES" (NOT TIED IN THIS SURVEY)
 - 1/2" I.R. WITH "HAGEDORN" CAP SET IN CONJUNCTION WITH THE PLATTING OF "MAPLE VIEW ACRES" IN 1991 (TIED DECEMBER 1993)
 - ◎ SET 1/2" x 24" IRON REBAR WITH ORANGE PLASTIC CAP STAMPED "WHITTEN 12412" WITH STEEL FENCEPOST SET ALONGSIDE
- R.O.S. = RECORD OF SURVEY
SFNF = SEARCHED FOR, NOT FOUND

SURVEYOR'S CERTIFICATE

This map correctly represents a survey made by me or under my direction in conformance with the requirements of the Survey Recording Act of the request of WES HANNIGAN in JULY 1996



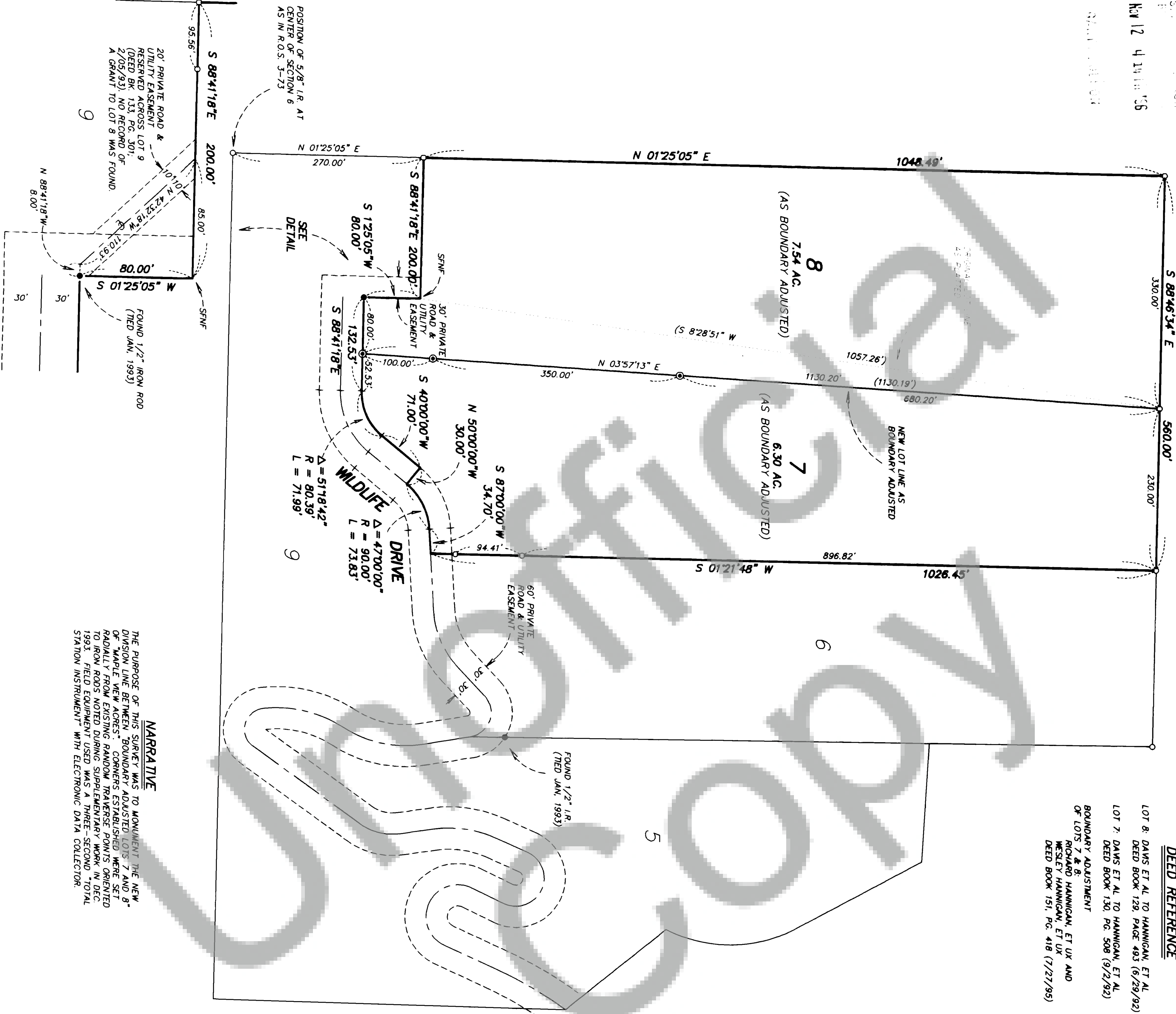
AUDITOR'S CERTIFICATE

Filed for record this 12th day of November, 1996 at 4:14 pm.
in Book 3 of surveys at Page 243 at the request of
Hagedorn, Inc.
(Signed) Gayle Hagedorn Deputy County Auditor

NOTE: Hagedorn, Inc. makes no warranties as to matters of unwritten title such as easements, adjoined, adverse possession, etc.

HAGEDORN, INC.
1924 Broadway Vancouver, Wa. 98663
Ph: (360) 696-4428 (503) 283-6778

SCALE: 1"=100'
DATE: 8/14/96
JOB NO.: 95-121
CALC. BY: CEW
DRAWN BY: CC
CHECKED BY: BPT
SHEET 1 OF 1



NARRATIVE
THE PURPOSE OF THIS SURVEY WAS TO MONUMENT THE NEW DIVISION LINE BETWEEN "BOUNDARY ADJUSTED LOTS 7 AND 8" OF "MAPLE VIEW ACRES". CORNERS ESTABLISHED WERE SET RADIIALLY FROM EXISTING RANDOM TRAVERSE POINTS ORIENTED TO IRON RODS NOTED DURING SUPPLEMENTARY WORK IN DEC. 1993. FIELD EQUIPMENT USED WAS A THREE-SECOND TOTAL STATION INSTRUMENT* WITH ELECTRONIC DATA COLLECTOR.